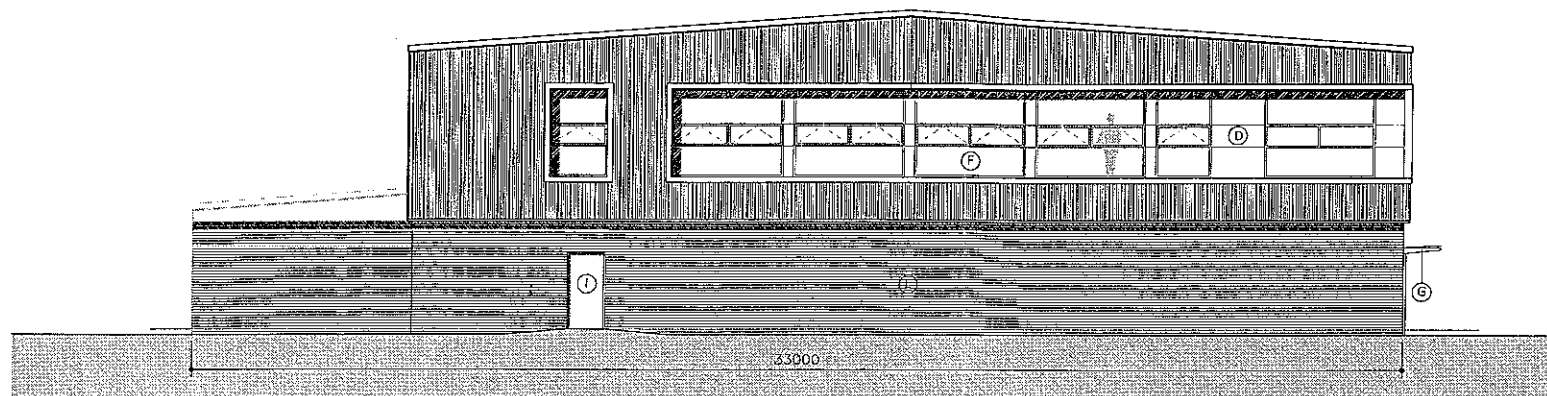
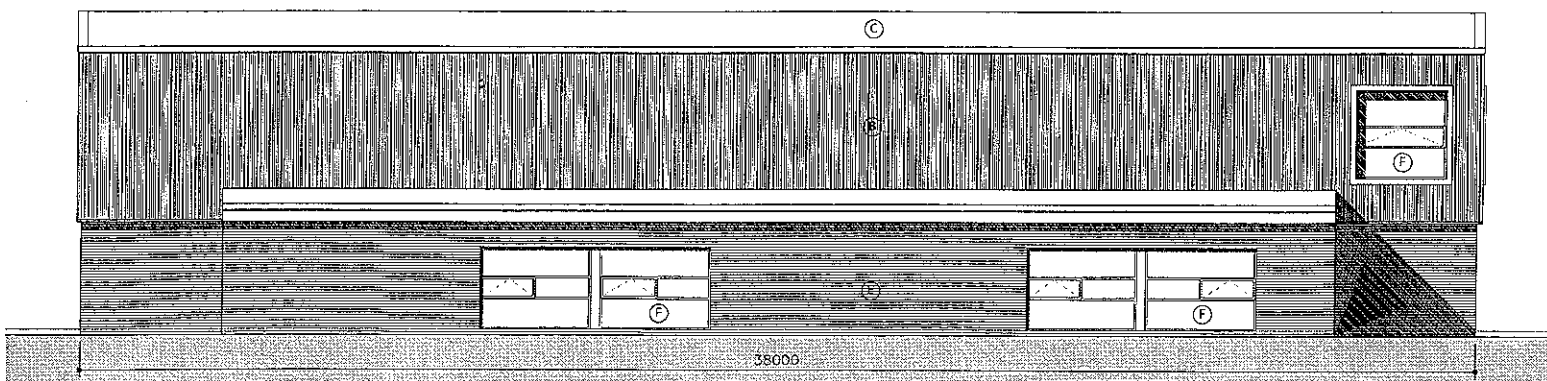


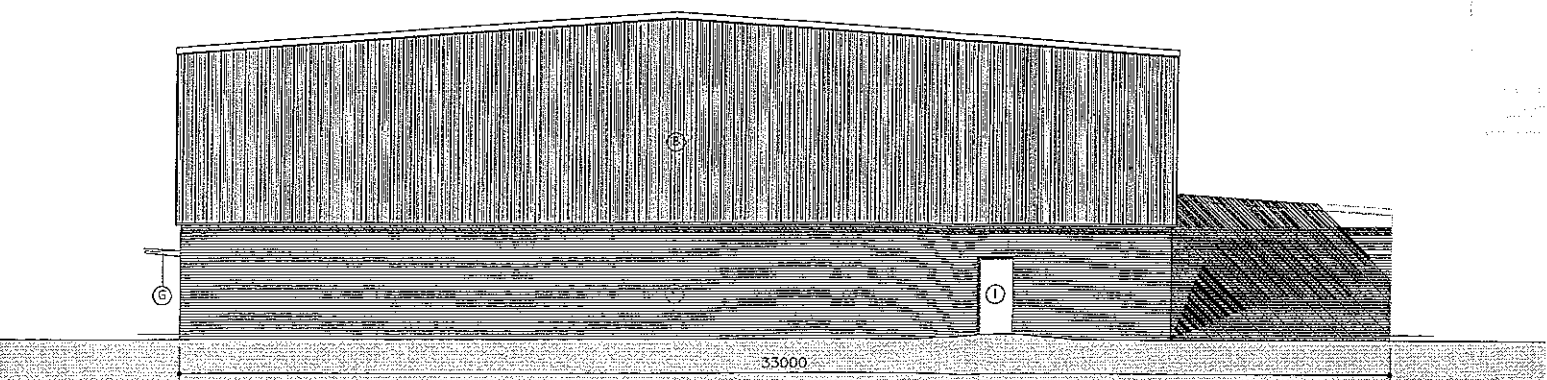
North Elevation



East Elevation



South Elevation



West Elevation

General Notes

All site dimensions shall be verified by the Contractor on site prior to commencing any works

Do not scale from this drawing

Only work to written dimensions

This drawing is the property of Fletcher-Rae (UK) Limited (the Fletcher-Rae) and copyright is reserved by them. The drawing is not to be copied or disclosed by or to any unauthorised persons without the prior written consent of Fletcher-Rae (UK) Limited

LEGEND:

- B - KINGSPAN KS1000DR INSULATED COMPOSITE WALL PANELS
COLOUR: TBC
NBS H43-120D
- C - KINGSPAN KS1000RW INSULATED COMPOSITE ROOF PANELS
COLOUR: TBC
NBS H43-120B
- D - POWDER COATED ALUMINUM CLADDING
COLOUR: TBC
NBS H20-150B
- E - SMOOTH FACING BRICK
COLOUR: RED
NBS F10-110
- F - POWDER COATED ALUMINUM WINDOWS/DOORS WITH OPENINGS AS SHOWN
COLOUR: TBC
NBS L10-331A
- G - STEEL AND GLASS ENTRANCE CANOPY
NBS L20-470
- H - POWERED SECTIONAL ROLLER SHUTTER LOADING DOOR
COLOUR: TBC
NBS L20-615A
- I - STEEL PERSONNEL DOOR
COLOUR: TBC
NBS L20-480A

320110662P

PLANNING ISSUE

- Revisions
- B - Perimeter louvre band to top of masonry removed
 - A - Roof design changed from hipped to gabled.
Flat micro-rib metal cladding to the first floor offices (north, east and south elevations) replaced with vertical metal cladding to match the rest of the building.
Projecting aluminum surround to first floor glazing removed and replaced with metal flashing.

Status PLANNING

Date August 2011

Scale 1:100 @A1

Drawn by PM

Client
Fort Vale Engineering Limited

Project
R&D and Innovation Facility

Drawing No. 11057 / PL04

General Arrangement Elevations



Architecture | Master Planning | Project Management

Hill Quays 5 Jordan Street Manchester M15 4FY

t +44 (0)161 242 1140
f +44 (0)161 242 1141
w www.fletcher-rae.com
e info@fletcher-rae.com

17 Nov 2011

320110662P

General Notes

All site dimensions shall be verified by the Contractor on site prior to commencing any works

Do not scale from this drawing

Only work to written dimensions

This drawing is the property of Fletcher-Rae (UK) Limited (the Fletcher-Rae) and copyright is reserved by them. The drawing is not to be copied or disclosed by or to any unauthorised persons without the prior written consent of Fletcher-Rae (UK) Limited.

AMENDED PLANS RECEIVED

DATE 17 Nov 2011

PLANNING ISSUE

Revisions A_ Projecting overhang to First Floor window surround reduced

Status PLANNING

Date August 2011

Scale 1:100 @A1

Drawn by P.J.M

Client
Fort Vale Engineering Limited

Project
R&D and Innovation Facility

Drawing No. 11057 / PL02

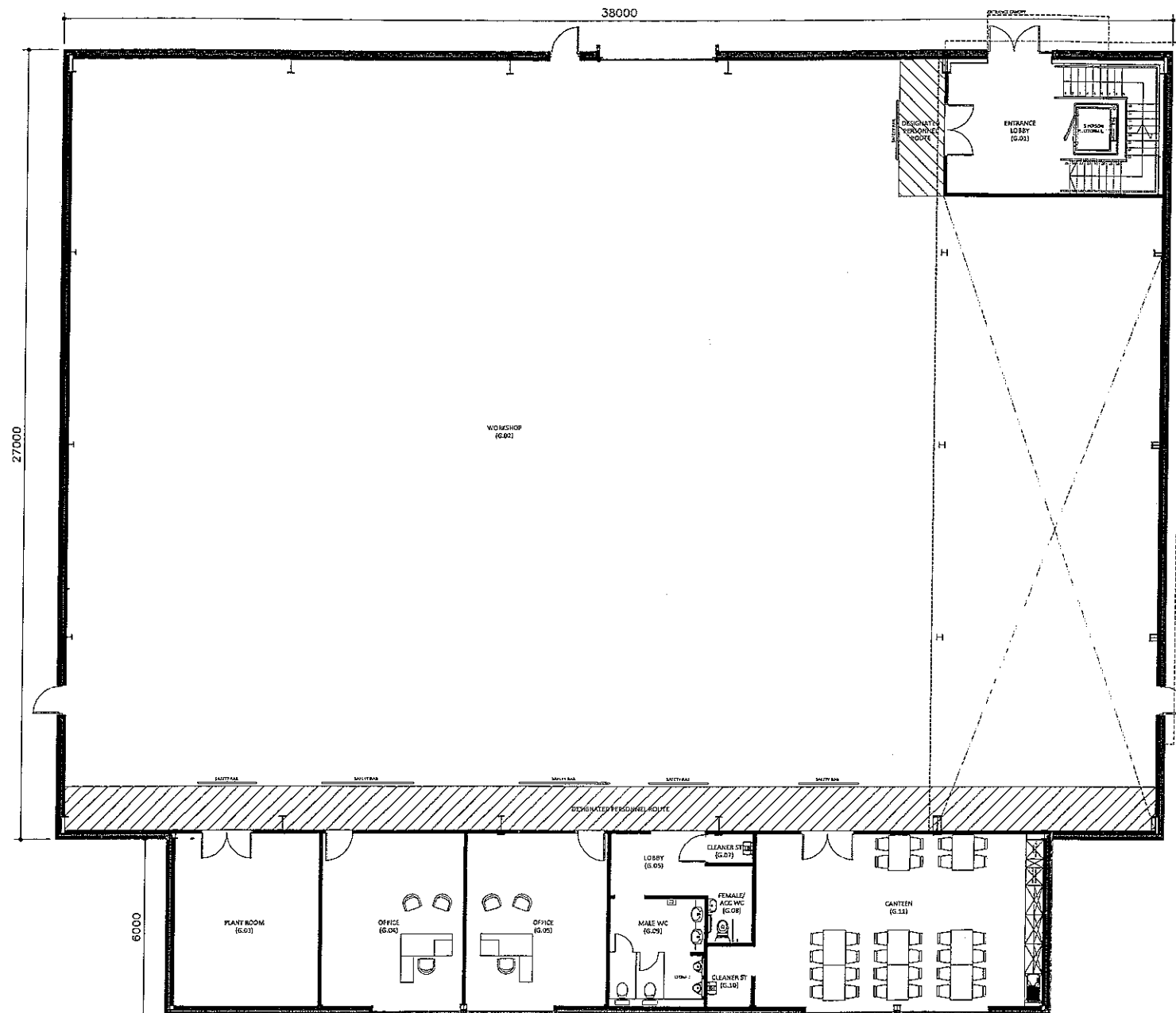
General Arrangement Plans



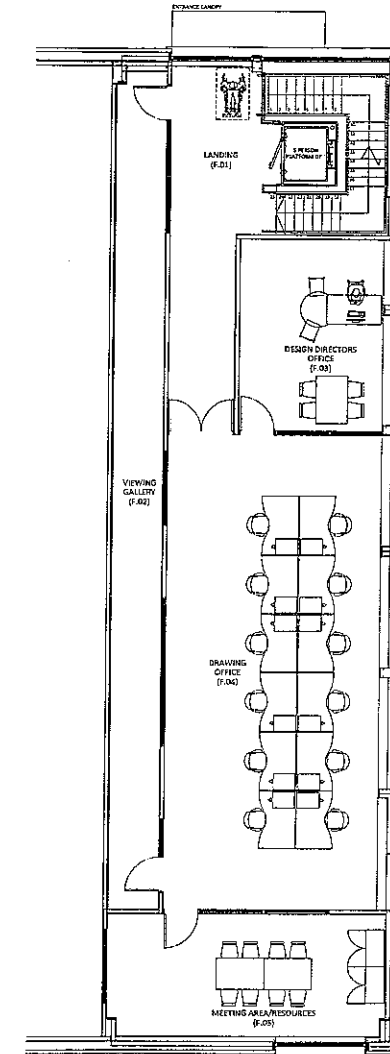
Architecture | Master Planning | Project Management

Hill Quays, 5 Jordan Street Manchester M15 4FY

t +44 (0)161 242 1140
f +44 (0)161 242 1141
w www.fletcher-rae.com
e info@fletcher-rae.com



Ground Floor Plan



First Floor Plan

