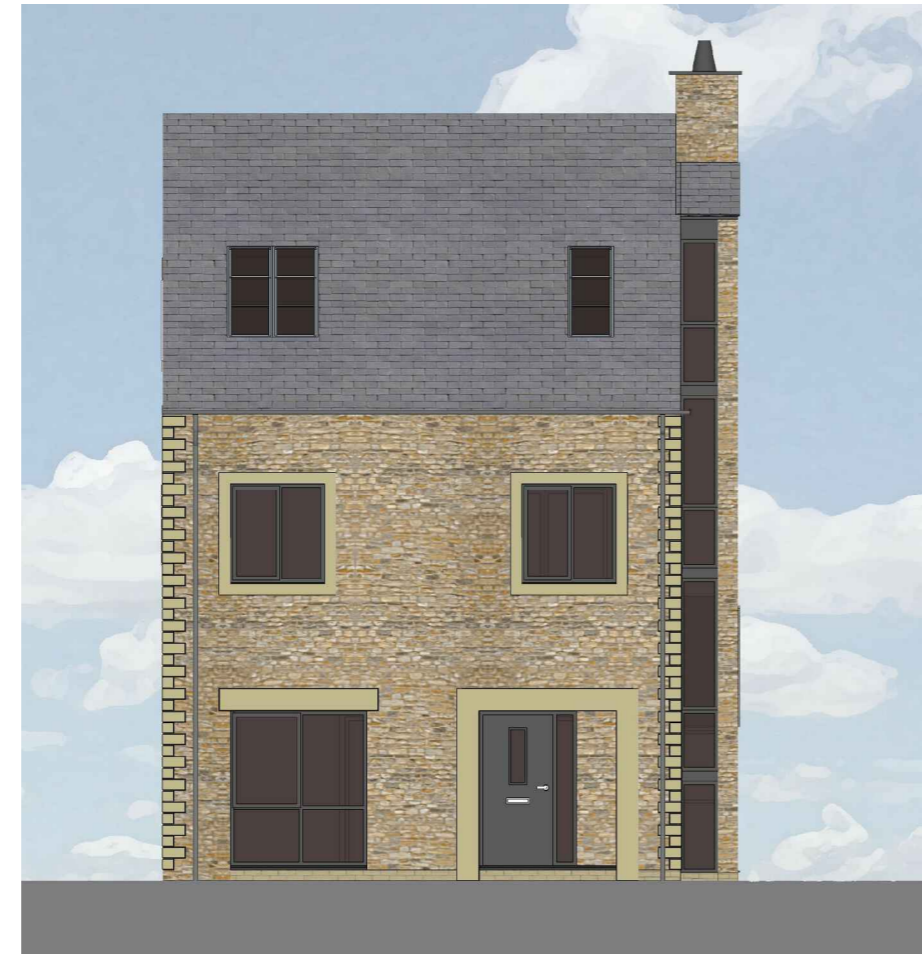


Second Floor Plan



Front Elevation



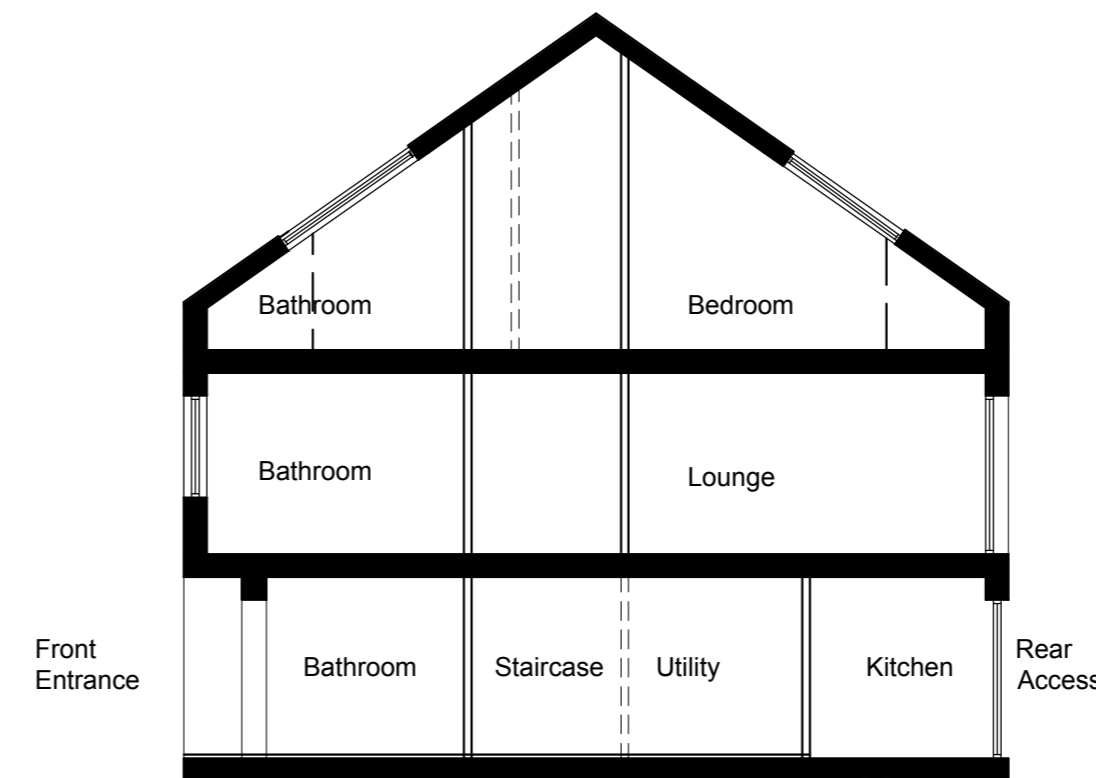
Gable Elevation



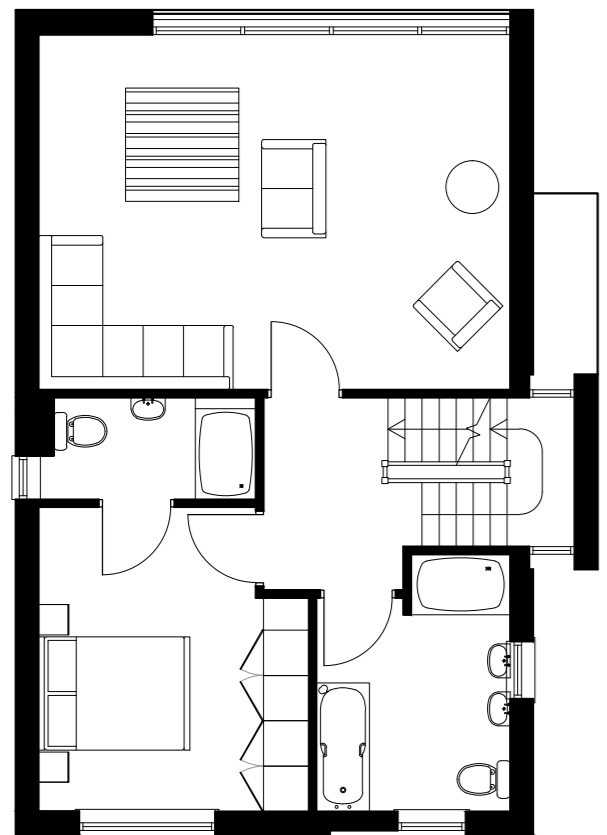
Rear Elevation



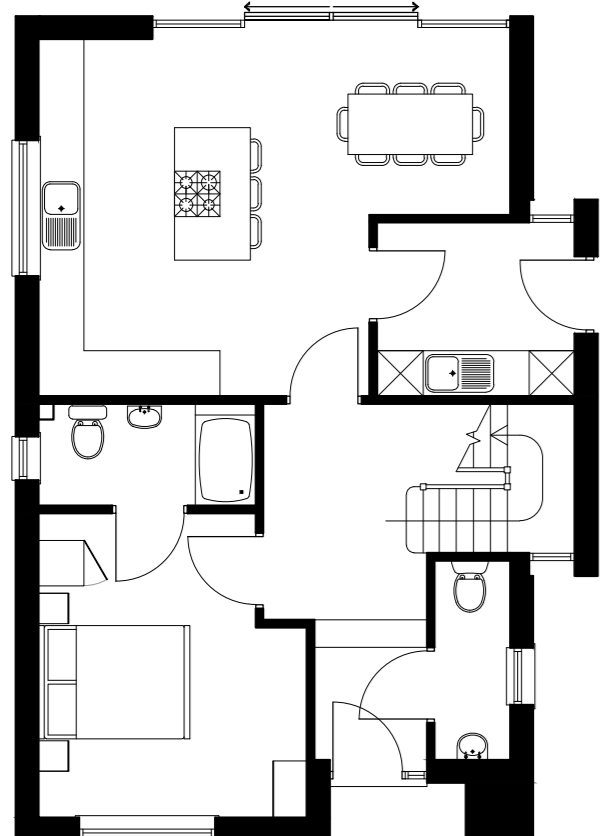
Gable Elevation



Indicative Section



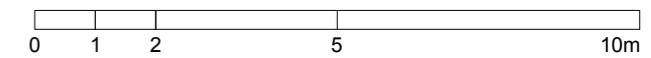
First Floor Plan



Ground Floor Plan
4b8p Private House
Internal Floor Area: 194m²

indicated on site plan

revision	notes	drawn by	checked by	date
1	Planning Resubmission	CHGB	CH	Oct 2012



project
Proposed Residential Development
Church Raikie
Chipping

client
Liverpool Housing Trust

drawing title
Proposed Floor Plans and Elevations Plot 7

status
Planning

drawing no. 09-1441-P07
revision -
scale 1:100@A2
drawn by GLB
date Oct 2012



Croft Goode Chartered Architects • 4 The Crossroads, Freckleton Street, Kirkham, Lancashire PR4 2SH
t: 01772 886 030
f: 01772 886 050
email: info@croftgoode.co.uk
www.croftgoode.co.uk