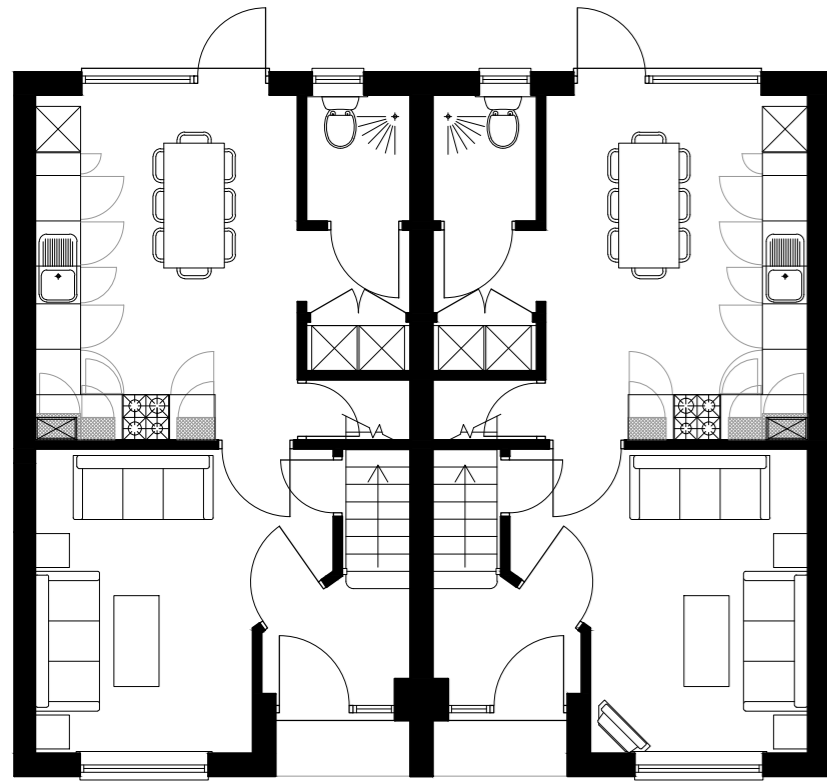


Proposed First Floor Plan



Proposed Ground Floor Plan

3b5p
Internal Floor Area: 84.5m²

indicated on site plan



Front Elevation



Rear Elevation



Gable Elevation

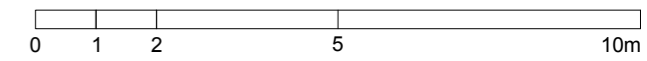


Front Elevation Perspective - Not to Scale



Rear Elevation Perspective - Not to Scale

revision	notes	CHGB	CH	Oct 2012
1	Planning Resubmission			



project

Proposed Residential Development
Church Raikie
Chipping

client
Liverpool Housing Trust

drawing title
Plots 1-6 Proposed Floor Plans and Elevations

status
Planning

drawing no.	revision	scale	drawn by	date
09-1441-P06	-	1:100@A2	GLB	Oct 2012