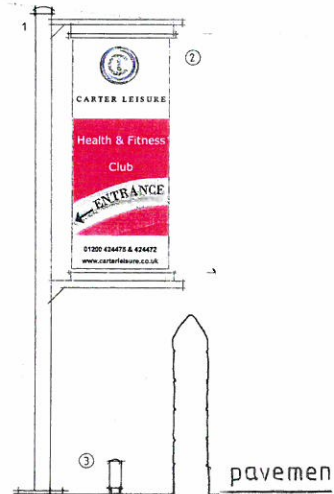


320130190P



SECTION AA

existing sign to be removed

sign 2

sign 1

CHATBURN ROAD

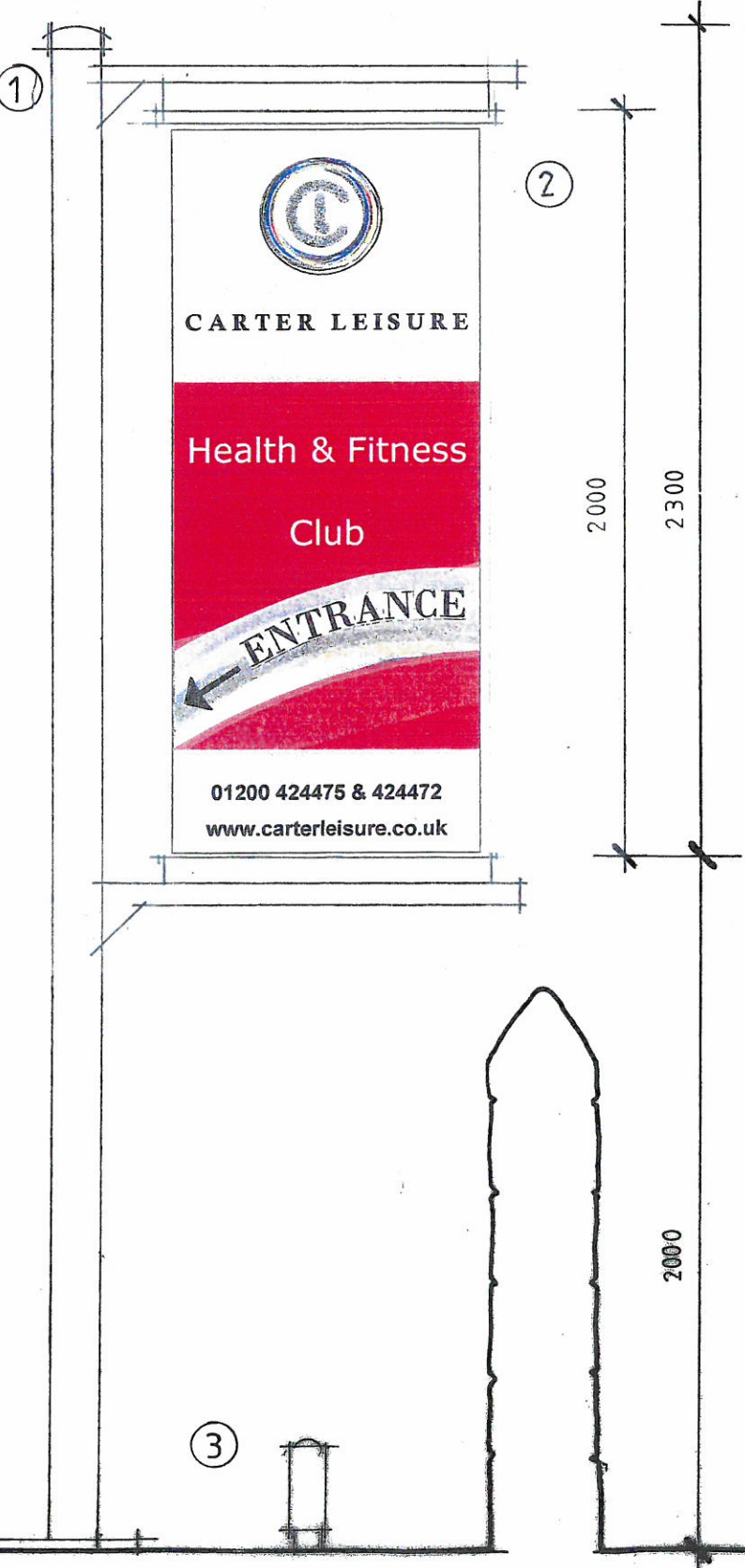
NOTE
 All signs must be installed in accordance with the relevant standards and regulations.
 The sign must be clearly visible and legible.
 The sign must be maintained in good condition.
 The sign must be removed if it becomes damaged or illegible.
 The sign must be replaced if it becomes damaged or illegible.
 The sign must be replaced if it becomes damaged or illegible.

DEVELOPMENT Proposed Banner Signs
LOCATION Carter Leisure
 Clitheroe Cricket Club
 Chatburn Road
 Clitheroe
 BB7 2AW
DRAWING TITLE Site Plan
SCALE 1:500
DATE Aug 2012 2013
DRG NO CLCCR/S/2012/2B

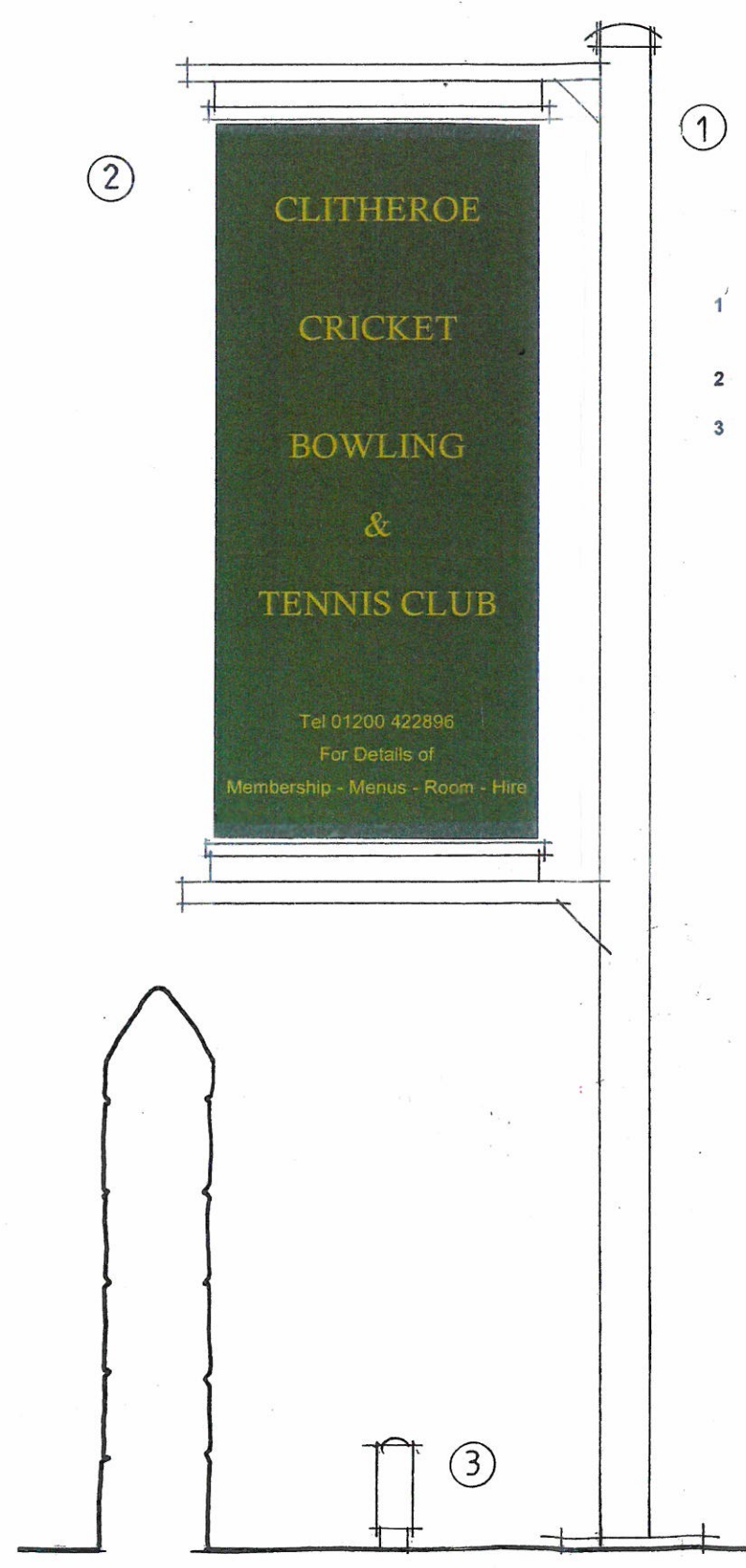
900

114 \varnothing

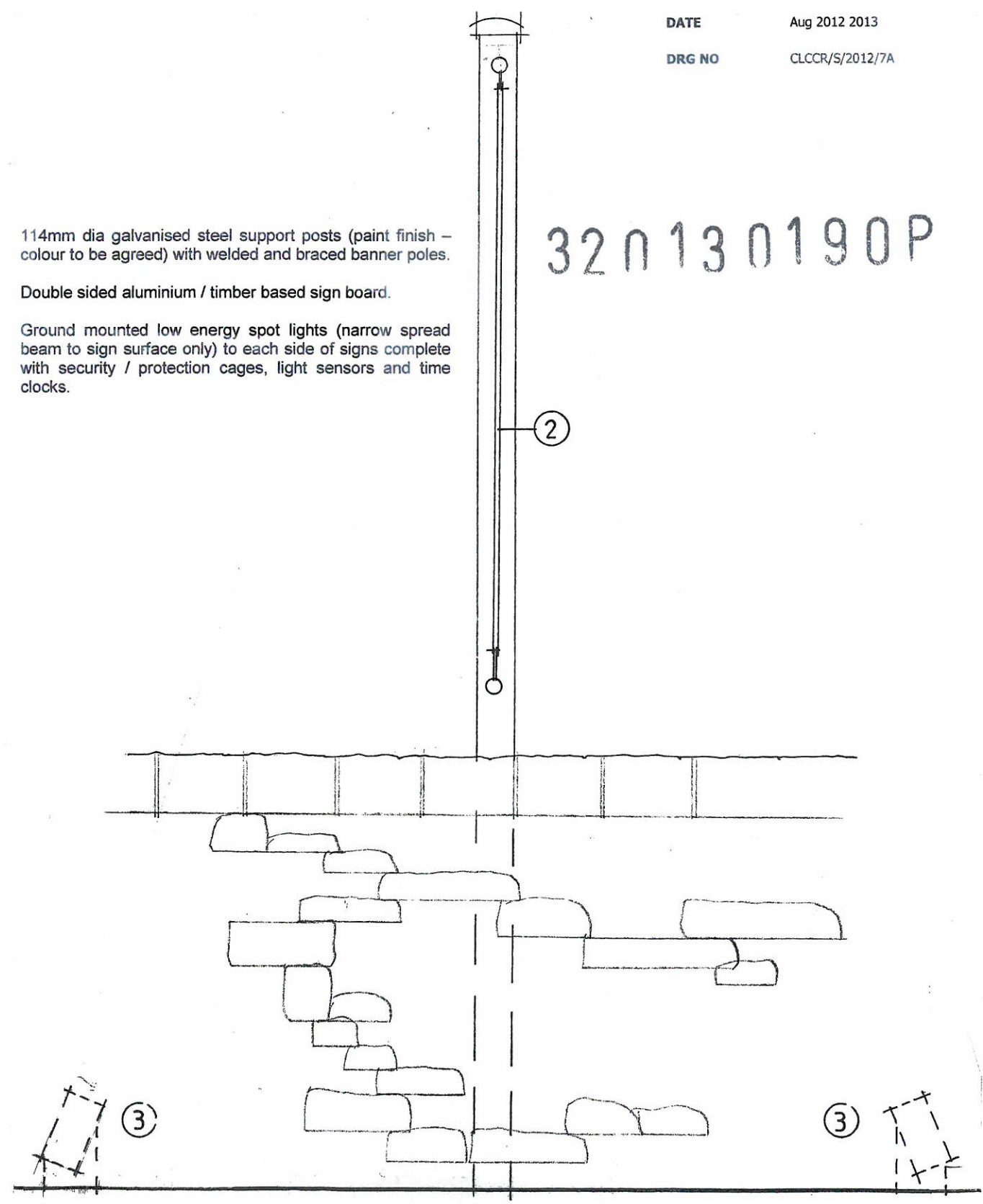
DEVELOPMENT Proposed Signs
LOCATION Carter Leisure
 Clitheroe Cricket Club
 Chatburn Road
 Clitheroe
 BB7 2AW
DRAWING TITLE Sign 2 Details
SCALE 1:20
DATE Aug 2012 2013
DRG NO CLCCR/S/2012/7A



North east elevation



South west elevation



North west elevation (from Chatburn Road)

- 1 114mm dia galvanised steel support posts (paint finish – colour to be agreed) with welded and braced banner poles.
- 2 Double sided aluminium / timber based sign board.
- 3 Ground mounted low energy spot lights (narrow spread beam to sign surface only) to each side of signs complete with security / protection cages, light sensors and time clocks.

320130190P