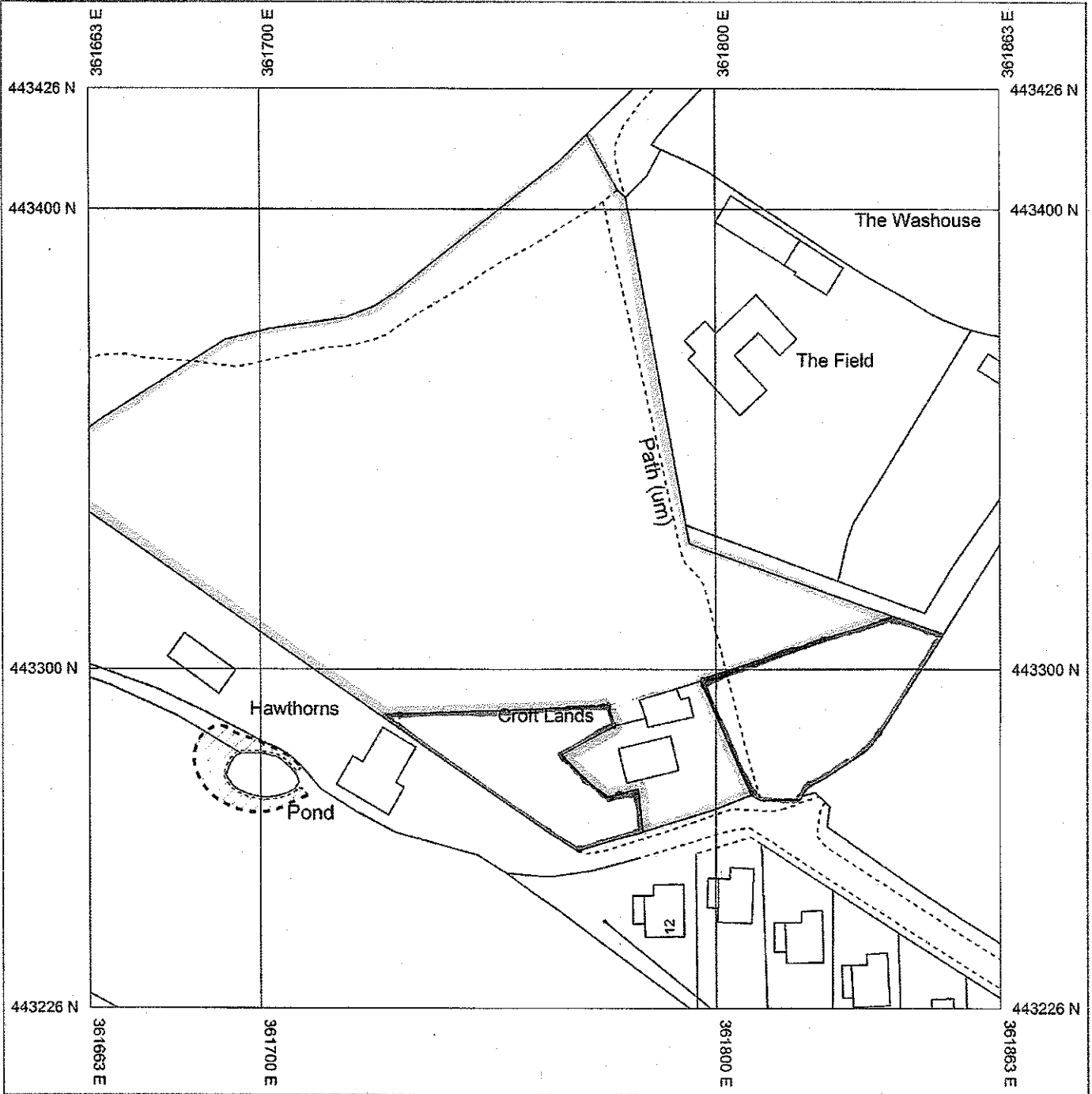


Mapping
sourced from



Location Map



Produced 28/05/2013 from the Ordnance Survey National Geographic Database and incorporating surveyed revision available at this date. © Crown Copyright 2013

Reproduction in whole or in part is prohibited without the prior permission of Ordnance Survey

Ordnance Survey and the OS Symbol are registered trademarks of Ordnance Survey, the national mapping agency of Great Britain.

The representation of a road, track or path is no evidence of a right of way.

The representation of features as lines is no evidence of a property boundary.

320130571P



Scale 1:1250

Supplied By: Granthams Preston
Serial number: 001103328
Plot Centre Coordinates: 361763, 443326

AMENDED PLANS RECEIVED
DATE 23/07/13



3201305712

Arboricultural Report

Trees on the Land at

**Croftlands
Broadmeadow Drive
Chipping**

for
Janet Seed

BRANCH OUT TREE SERVICES

Proprietor: Keith Harrison National Certificate Arboriculture
Fully Insured
www.branchouttreeservices.co.uk

Tel No: 01772 612183

The Trees

As instructed, I have now visited the above site on 20th July 2013 to assess the three trees whose root protection areas may affect the planning application at Croftlands, Broadmeadow Drive, Chipping.

The trees in question are numbered T1 – T3, and are identified on drawing numbered SK/50B.

The trees have been assessed from ground level and the DBH (Diameter at breast height) taken at 1.3 metres above ground level in order to determine the radius of RPA (Root protection area) : -

Tree (T1) Alder

Alnus glutinosa

DBH: 475 mm

Radius of RPA: 5.7m

**Tree (T2) Hawthorn
*monogyna***

Crataegus

DBH: 401 mm

Radius of RPA: 4.81m

NB: See calculations on Page 3

Tree (T3) Common Beech

Fagus sylvatica

DBH: 380 mm

Radius of RPA: 4.56m

Proprietor: Keith Harrison National Certificate Arboriculture
Fully Insured
www.branchouttreeservices.co.uk

Tel No: 01772 612183

Multi Stemmed Hawthorn Tree

T2 is a mature tree which has a diameter of between 500 and 600mm just above ground level.

At approximately 1m above ground level it splits into 5 main stems plus a few smaller branches of below 75 mm diameter.

Using the formula from BS5837 (2012) Annex C which states

For trees with two to five stems, the combined stem diameter should be calculated as follows:

$$\sqrt{(\text{stem diameter } 1)^2 + (\text{stem diameter } 2)^2 + \dots + (\text{stem diameter } 5)^2}$$

Stem 1 Diameter = 235mm

Stem 2 Diameter = 191mm

Stem 3 Diameter = 210mm

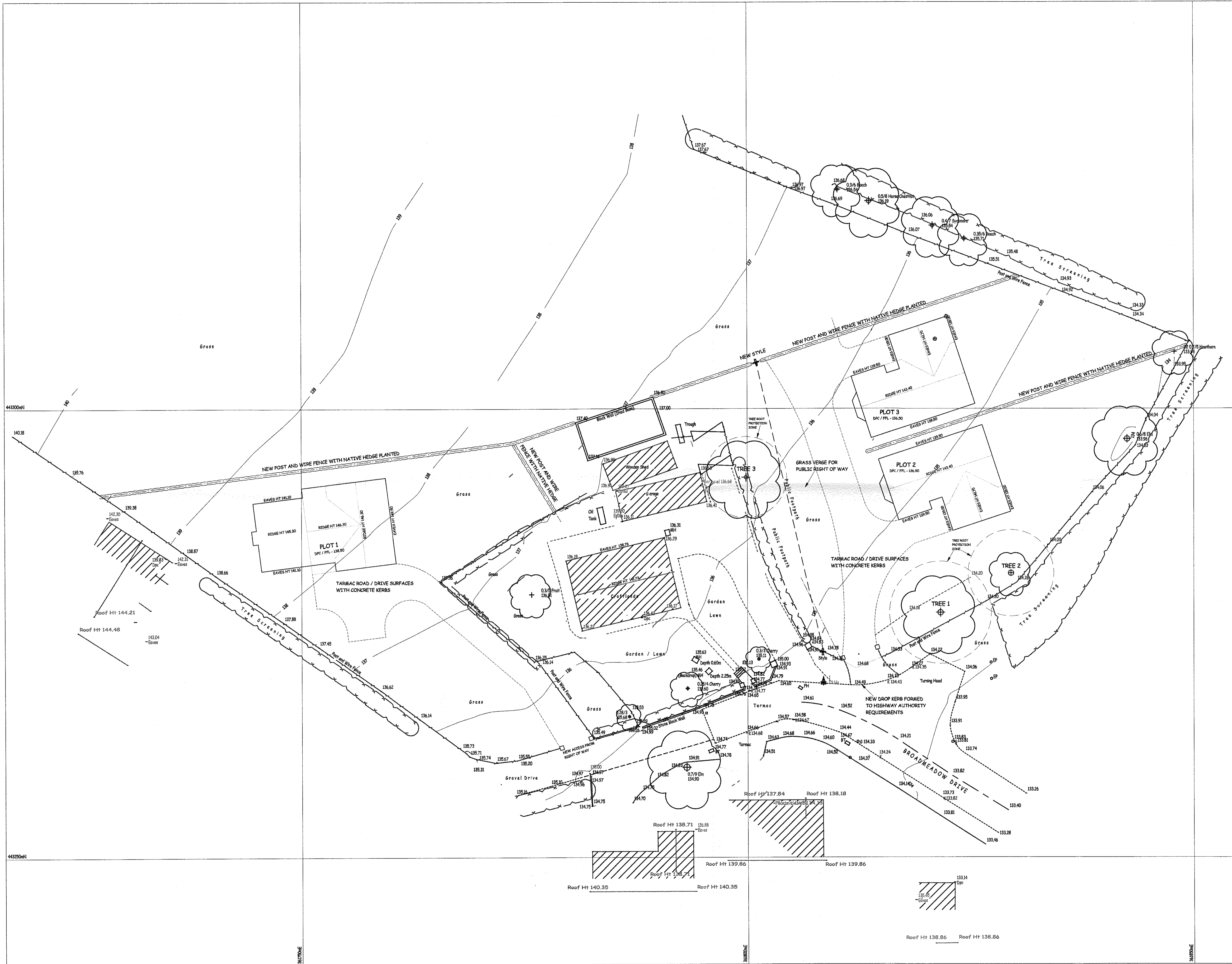
Stem 4 Diameter = 95mm

Stem 5 Diameter = 127mm

This calculation gives an answer of 401mm and therefore a RPA of 4.81m.

Proprietor: Keith Harrison National Certificate Arboriculture
Fully Insured
www.branchouttreeservices.co.uk

Tel No: 01772 612183



Notes

- 1. Survey Based on National Grid (Gps).
- 2. Level Datum is to OSTN02 Geoid (Gps).
- 3. See Arboricultural Report for details of Trees 1, 2 & 3

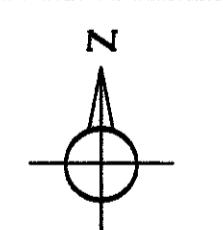
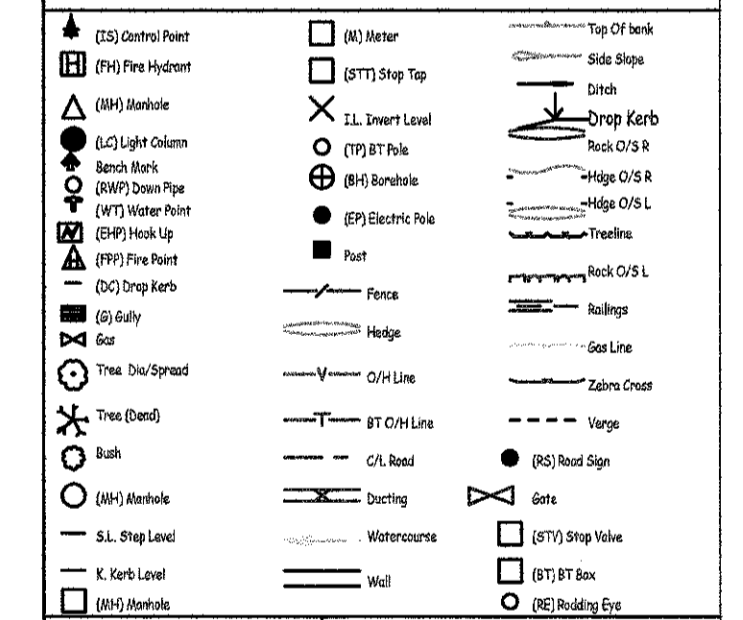
AMENDED PLANS RECEIVED
DATE 23/07/13

320130571P

AMENDMENTS

A	
B	
C	

KEY



(INDICATIVE ONLY)

Job Details
LAND AT 'CROFTLANDS' BROADMEADOW DRIVE, CHIPPING.

Drawing Title
SITE PLAN OF PROPOSED PLOTS 1, 2 & 3 FOR JANET SEED

Scale	Date	Child
1:200 at A1	29 / 05 / 2013	
Job I.D.	Drawing No.	
	SK / 50 B	