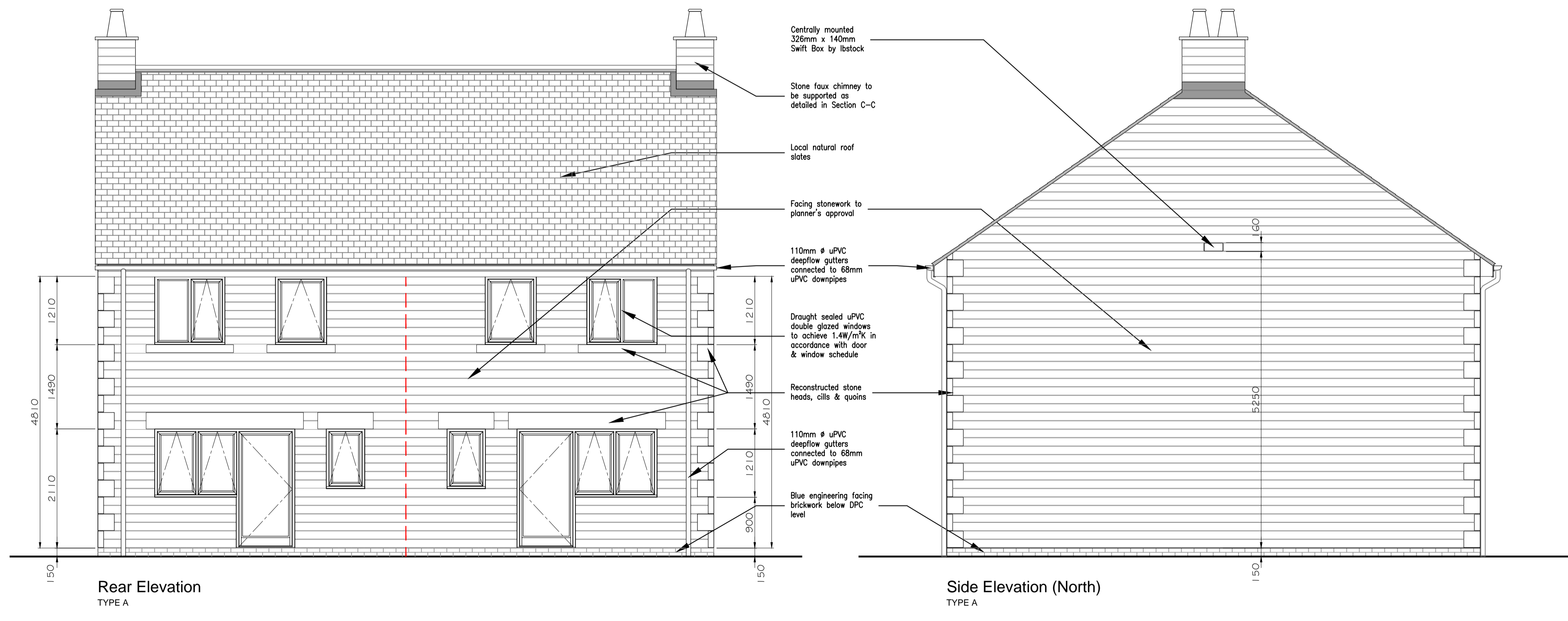
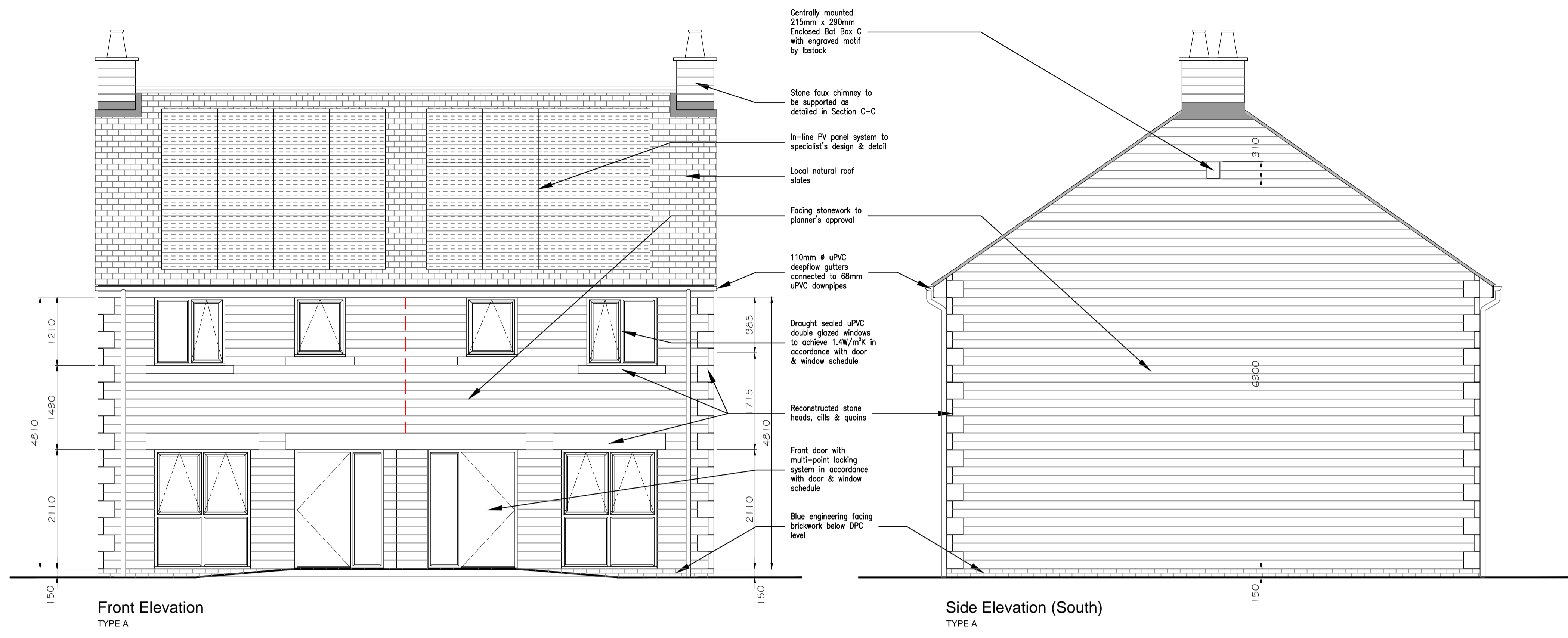
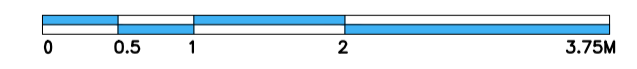


MOVEMENT JOINTS  
(for location see plans)



F	PV Panels added to southeast facing roof elevation	09.10.2013	MJS	-
E	Battens lines repositioned in line with roof pitch recommendation	28.08.2013	RJF	-
D	Movement joints shown with battens lines added	23.08.2013	RJF	-
C	Roofs to rear reflected in line with SAGEP's drainage plan	06.08.2013	RJF	-
B	Updated with revised coursing & quoins. Window heads made 20mm high and bottom window sill lowered by 10mm	30.07.2013	RJF	-
A	Materials updated, type & windows amended with notes added	09.07.2013	RJF	-
rev	description	date	drawn	check



client  
**Liverpool Housing Trust**

project  
**Proposed Residential Development  
Church Raikie  
Chipping**

drawing  
**Proposed Elevations - Type A**

file name 09-1441-W05 Proposed Elevations	rev F	date 9-Jul-13
drawing reference 09-1441-W05	scale 1:50	
issue status Construction Issue	original by DSK	checked by —

The copyright of this drawing is held by Croft Goode Limited, and no reproduction is allowed without prior permission. This drawing must be checked and verified by the contractor prior to work commencing on site. Liability shall not be taken for any defects in this drawing unless, prior to commencing, this drawing and all its dimensions have been so checked and verified. All drawings issued prior to being checked to be treated as draft. Do not scale.