

Yes	insect - moth	UK BAP		Ennomos fuscantaria	Dusky Thorn	2008.00
Yes	insect - moth	Nat Legislation		Eulithis mellinata	Spinach	2008.00
Yes	insect - moth	UK BAP		Hoplodrina blanda	Rustic	2008.00
Yes	insect - moth	UK BAP		Hoplodrina blanda	Rustic	2008.00
Yes	insect - moth	Nat Legislation		Spilosoma lubricipeda	White Ermine	2008.00
Yes	insect - moth	Nat Legislation		Spilosoma luteum	Buff Ermine	2008.00
Yes	insect - moth	Nat Legislation		Allophyes oxyacanthae	Green-Brindled Crescent	2008.00
Yes	insect - moth	UK BAP		Diarsia rubi	Small Square-spot	2008.00
Yes	insect - moth	UK BAP		Ecliptopera silaceata	Small Phoenix	2008.00
Yes	insect - moth	UK BAP		Xanthorhoe ferrugata	Dark-barred Twin-spot Carpet	2008.00
	insect - moth		Lancs BAP Provisional Long List	Cerura vinula	Puss Moth	2007.00
	insect - moth		Lancs BAP Provisional Long List	Cerura vinula	Puss Moth	2007.00
	insect - moth	Other rare/scarce	Lancs BAP Provisional Long List	Deltote uncula	Silver Hook	2007.00
Yes	insect - moth	UK BAP		Autographa bractea	Gold Spangle	2007.00
Yes	insect - moth	UK BAP		Acronicta rumicis	Knotgrass	2007.00
Yes	insect - moth	Nat Legislation		Amphipoea oculea	Ear Moth	2007.00
Yes	insect - moth	Nat Legislation		Apamea remissa	Dusky Brocade	2007.00
Yes	insect - moth	Nat Legislation		Apamea remissa	Dusky Brocade	2007.00
Yes	insect - moth	Nat Legislation		Apamea remissa	Dusky Brocade	2007.00
Yes	insect - moth	Nat Legislation		Apamea remissa	Dusky Brocade	2007.00
Yes	insect - moth	UK BAP		Ennomos fuscantaria	Dusky Thorn	2007.00
Yes	insect - moth	UK BAP		Eugnorisma glareosa	Autumnal Rustic	2007.00
Yes	insect - moth	Nat Legislation		Hepialus humuli	Ghost Moth	2007.00
Yes	insect - moth	Nat Legislation		Hepialus humuli	Ghost Moth	2007.00
Yes	insect - moth	Nat Legislation		Hepialus humuli	Ghost Moth	2007.00
Yes	insect - moth	Nat Legislation		Hepialus humuli	Ghost Moth	2007.00
Yes	insect - moth	UK BAP		Orthosia gracilis	Ghost Moth	2007.00
Yes	insect - moth	UK BAP		Orthosia gracilis	Powdered Quaker	2007.00
Yes	insect - moth	Nat Legislation		Spilosoma lubricipeda	Powdered Quaker	2007.00
Yes	insect - moth	Nat Legislation		Spilosoma lubricipeda	White Ermine	2007.00
Yes	insect - moth	Nat Legislation		Spilosoma lubricipeda	White Ermine	2007.00
Yes	insect - moth	Nat Legislation		Spilosoma lubricipeda	White Ermine	2007.00

Yes	insect - moth	UK BAP			Xanthorhoe ferrugata	Dark-barred Twin-spot Carpet	2007.00
Yes	insect - moth	UK BAP			Xanthorhoe ferrugata	Dark-barred Twin-spot Carpet	2007.00
Yes	insect - moth	UK BAP			Xanthorhoe ferrugata	Dark-barred Twin-spot Carpet	2007.00
	bird	UK BAP		Lancs BAP Provisional Long List	Charadrius hiaticula	Ringed Plover	2006.00
	bird	Other rare/scarce		Lancs BAP Provisional Long List	Delichon urbica	House Martin	2006.00
	bird	International		Lancs BAP Provisional Long List	Charadrius dubius	Little Ringed Plover	2006.00
	bird	Red Data List		Lancs BAP Provisional Long List	Haematopus ostralegus	Oystercatcher	2006.00
	bird	Other rare/scarce		Lancs BAP Provisional Long List	Tringa totanus	Redshank	2006.00
Yes	insect - moth	Nat Legislation		Lancs BAP Provisional Long List	Arctia caja	Garden Tiger	2006.00
Yes	insect - moth	Nat Legislation		Lancs BAP Provisional Long List	Arctia caja	Garden Tiger	2006.00
Yes	insect - moth	UK BAP		Lancs BAP Provisional Long List	Diloba caeruleocephala	Figure of Eight	2006.00
Yes	insect - moth	UK BAP		Lancs BAP Provisional Long List	Diloba caeruleocephala	Figure of Eight	2006.00
Yes	insect - moth	Nat Legislation		Lancs BAP Provisional Long List	Mythimna comma	Shoulder-striped Wainscot	2006.00
Yes	insect - moth	Nat Legislation		Lancs BAP Provisional Long List	Mythimna comma	Shoulder-striped Wainscot	2006.00
Yes	terrestrial mammal	Nat Legislation		Lancs BAP Provisional Long List	Chiroptera	Bats	2006.00
Yes	bird	Nat Legislation		Lancs BAP Provisional Long List	Vanellus vanellus	Lapwing	2006.00
	insect - moth				Autographa bractea	Gold Spangle	2006.00
	insect - moth	Other rare/scarce			Lithophane hepatica	Pale Pinion	2006.00
Yes	insect - moth	UK BAP			Acronicta rumicis	Knotgrass	2006.00
Yes	insect - moth	Nat Legislation			Apamea remissa	Dusky Brocade	2006.00
Yes	insect - moth	Nat Legislation			Apamea remissa	Dusky Brocade	2006.00
Yes	insect - moth	Nat Legislation			Apamea remissa	Dusky Brocade	2006.00
Yes	insect - moth	Nat Legislation			Apamea remissa	Dusky Brocade	2006.00
Yes	insect - moth	Nat Legislation			Apamea remissa	Dusky Brocade	2006.00
Yes	insect - moth	Nat Legislation			Apamea remissa	Dusky Brocade	2006.00
Yes	insect - moth	Nat Legislation			Apamea remissa	Dusky Brocade	2006.00
Yes	insect - moth	Nat Legislation			Eulithis mellinata	Spinach	2006.00
Yes	insect - moth	UK BAP			Melanchra persicariae	Dot Moth	2006.00
Yes	insect - moth	UK BAP			Melanchra persicariae	Dot Moth	2006.00

Yes	insect - moth	Nat Legislation		Spilosoma luteum	Buff Ermine	2005.00
Yes	insect - moth	Nat Legislation		Spilosoma luteum	Buff Ermine	2005.00
Yes	insect - moth	Nat Legislation		Xanthia icteritia	Sallow	2005.00
Yes	insect - moth	UK BAP		Hydraecia micacea	Rosy Rustic	2005.00
Yes	insect - moth	UK BAP		Hydraecia micacea	Rosy Rustic	2005.00
Yes	insect - moth	UK BAP		Hydraecia micacea	Rosy Rustic	2005.00
Yes	insect - moth	UK BAP		Hydraecia micacea	Rosy Rustic	2005.00
					Green-Brindled	
Yes	insect - moth	Nat Legislation		Allophyes oxycanthae	Crescent	2005.00
Yes	insect - moth	UK BAP		Diarsia rubi	Small Square-spot	2005.00
Yes	insect - moth	UK BAP		Diarsia rubi	Small Square-spot	2005.00
Yes	insect - moth	UK BAP		Diarsia rubi	Small Square-spot	2005.00
Yes	insect - moth	UK BAP		Diarsia rubi	Small Square-spot	2005.00
Yes	insect - moth	UK BAP		Diarsia rubi	Small Square-spot	2005.00
Yes	insect - moth	UK BAP		Diarsia rubi	Small Square-spot	2005.00
Yes	insect - moth	UK BAP		Diarsia rubi	Small Square-spot	2005.00
Yes	insect - moth	UK BAP		Diarsia rubi	Small Square-spot	2005.00
Yes	insect - moth	UK BAP		Diarsia rubi	Small Square-spot	2005.00
Yes	insect - moth	UK BAP		Diarsia rubi	Small Square-spot	2005.00
Yes	insect - moth	UK BAP		Diarsia rubi	Small Square-spot	2005.00
Yes	insect - moth	UK BAP		Diarsia rubi	Small Square-spot	2005.00
Yes	insect - moth	UK BAP		Diarsia rubi	Small Square-spot	2005.00
Yes	insect - moth	UK BAP		Diarsia rubi	Small Square-spot	2005.00
					Shoulder-striped	
Yes	insect - moth	Nat Legislation	Lancs BAP Provisional Long List	Mythimna comma	Wainscot	2004.00
					Shoulder-striped	
Yes	insect - moth	Nat Legislation	Lancs BAP Provisional Long List	Mythimna comma	Wainscot	2004.00
					Shoulder-striped	
Yes	insect - moth	Nat Legislation	Lancs BAP Provisional Long List	Mythimna comma	Wainscot	2004.00
Yes	insect - moth	UK BAP	Lancs BAP Provisional Long List	Lycia hirtaria	Brindled Beauty	2004.00
	flowering plant		Lancs BAP Provisional Long List	Potamogeton bertholdii	Small Pondweed	2004.00
	insect - moth			Autographa bractea	Gold Spangle	2004.00
Yes	insect - moth	Nat Legislation		Apamea remissa	Dusky Brocade	2004.00
Yes	insect - moth	Nat Legislation		Apamea remissa	Dusky Brocade	2004.00
Yes	insect - moth	Nat Legislation		Apamea remissa	Dusky Brocade	2004.00

Yes	insect - moth	UK BAP		Eclipoptera silaceata	Small Phoenix	2003.00
Yes	insect - moth	UK BAP		Eclipoptera silaceata	Small Phoenix	2003.00
Yes	insect - moth	UK BAP		Eclipoptera silaceata	Small Phoenix	2003.00
Yes	insect - moth	UK BAP		Eclipoptera silaceata	Small Phoenix	2003.00
Yes	insect - moth	UK BAP		Eclipoptera silaceata	Small Phoenix	2003.00
Yes	insect - moth	UK BAP		Eclipoptera silaceata	Small Phoenix	2003.00
Yes	insect - moth	UK BAP		Eclipoptera silaceata	Small Phoenix	2003.00
Yes	insect - moth	UK BAP		Eclipoptera silaceata	Small Phoenix	2003.00
Yes	insect - moth	UK BAP		Eclipoptera silaceata	Small Phoenix	2003.00
Yes	insect - moth	UK BAP		Eclipoptera silaceata	Small Phoenix	2003.00
Yes	insect - moth	UK BAP		Xanthorhoe ferrugata	Dark-barred Twin-spot Carpet	2003.00
Yes	insect - moth	UK BAP		Xestia agathina	Heath Rustic	2003.00

Appendix 8: Proposed Development Layout



Longridge, Bowland Meadows



- Legend**
- Proposed building footprint
 - Existing building footprint
 - Proposed parking space
 - Existing parking space
 - Proposed landscaping
 - Existing landscaping
 - Proposed access road
 - Existing access road
 - Proposed road
 - Existing road
 - Proposed road widening
 - Existing road widening
 - Proposed road narrowing
 - Existing road narrowing
 - Proposed road closure
 - Existing road closure
 - Proposed road construction
 - Existing road construction
 - Proposed road improvement
 - Existing road improvement
 - Proposed road maintenance
 - Existing road maintenance
 - Proposed road repair
 - Existing road repair
 - Proposed road replacement
 - Existing road replacement
 - Proposed road reconstruction
 - Existing road reconstruction
 - Proposed road reconstruction with widening
 - Existing road reconstruction with widening
 - Proposed road reconstruction with narrowing
 - Existing road reconstruction with narrowing
 - Proposed road reconstruction with improvement
 - Existing road reconstruction with improvement
 - Proposed road reconstruction with maintenance
 - Existing road reconstruction with maintenance
 - Proposed road reconstruction with repair
 - Existing road reconstruction with repair
 - Proposed road reconstruction with replacement
 - Existing road reconstruction with replacement
 - Proposed road reconstruction with reconstruction
 - Existing road reconstruction with reconstruction



Baldwin
Design
LLC

Project Name: Residential Redevelopment
Location: Longridge, Bowland Meadows
Client: [Name]
Project No.: [Number]
Scale: 1:500
Date: 1/20/16
Project Manager: [Name]

Item No.	Description	Area (sq. ft.)	Volume (cu. ft.)
1	Site Area	11,100	11,100
2	Building Footprints	1,100	1,100
3	Parking Spaces	1,100	1,100
4	Roads	1,100	1,100
5	Landscaping	1,100	1,100
6	Access Roads	1,100	1,100
7	Driveways	1,100	1,100
8	Garages	1,100	1,100
9	Other Structures	1,100	1,100
10	Utilities	1,100	1,100
11	Site Amenities	1,100	1,100
12	Site Furniture	1,100	1,100
13	Site Lighting	1,100	1,100
14	Site Security	1,100	1,100
15	Site Maintenance	1,100	1,100
16	Site Restoration	1,100	1,100
17	Site Decommissioning	1,100	1,100
18	Site Remediation	1,100	1,100
19	Site Rehabilitation	1,100	1,100
20	Site Reclamation	1,100	1,100
21	Site Reuse	1,100	1,100
22	Site Recycling	1,100	1,100
23	Site Reclamation	1,100	1,100
24	Site Reclamation	1,100	1,100
25	Site Reclamation	1,100	1,100
26	Site Reclamation	1,100	1,100
27	Site Reclamation	1,100	1,100
28	Site Reclamation	1,100	1,100
29	Site Reclamation	1,100	1,100
30	Site Reclamation	1,100	1,100
31	Site Reclamation	1,100	1,100
32	Site Reclamation	1,100	1,100
33	Site Reclamation	1,100	1,100
34	Site Reclamation	1,100	1,100
35	Site Reclamation	1,100	1,100
36	Site Reclamation	1,100	1,100
37	Site Reclamation	1,100	1,100
38	Site Reclamation	1,100	1,100
39	Site Reclamation	1,100	1,100
40	Site Reclamation	1,100	1,100
41	Site Reclamation	1,100	1,100
42	Site Reclamation	1,100	1,100
43	Site Reclamation	1,100	1,100
44	Site Reclamation	1,100	1,100
45	Site Reclamation	1,100	1,100
46	Site Reclamation	1,100	1,100
47	Site Reclamation	1,100	1,100
48	Site Reclamation	1,100	1,100
49	Site Reclamation	1,100	1,100
50	Site Reclamation	1,100	1,100

Plans

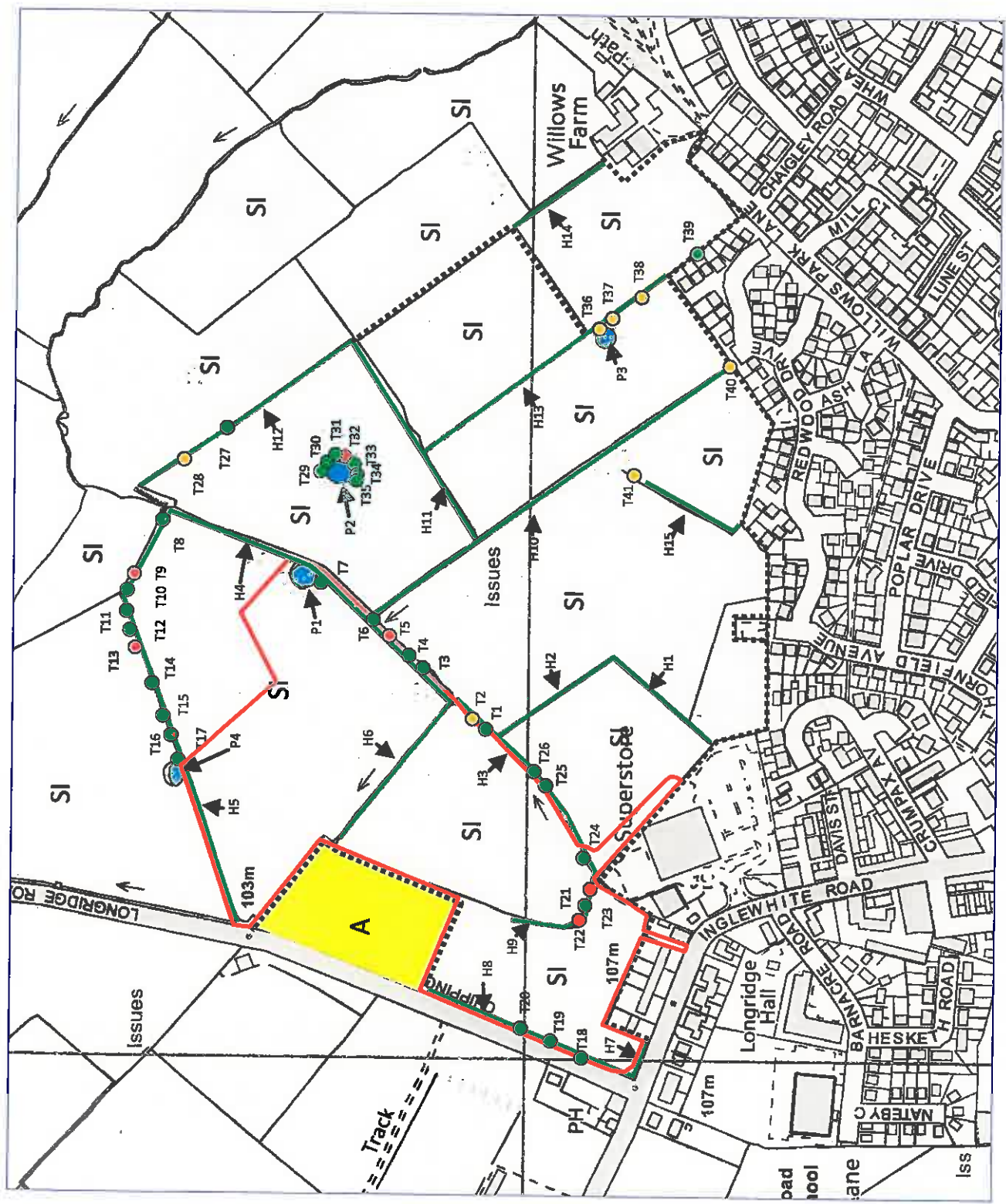
- 2001/P04 Habitat Features
- 2001/P22 Habitat Enhancement for Great Crested Newts
- 2001/P23 Landscape Strategy (Sheet 1 of 2)
- 2001/P23 Landscape Strategy (Sheet 2 of 2)

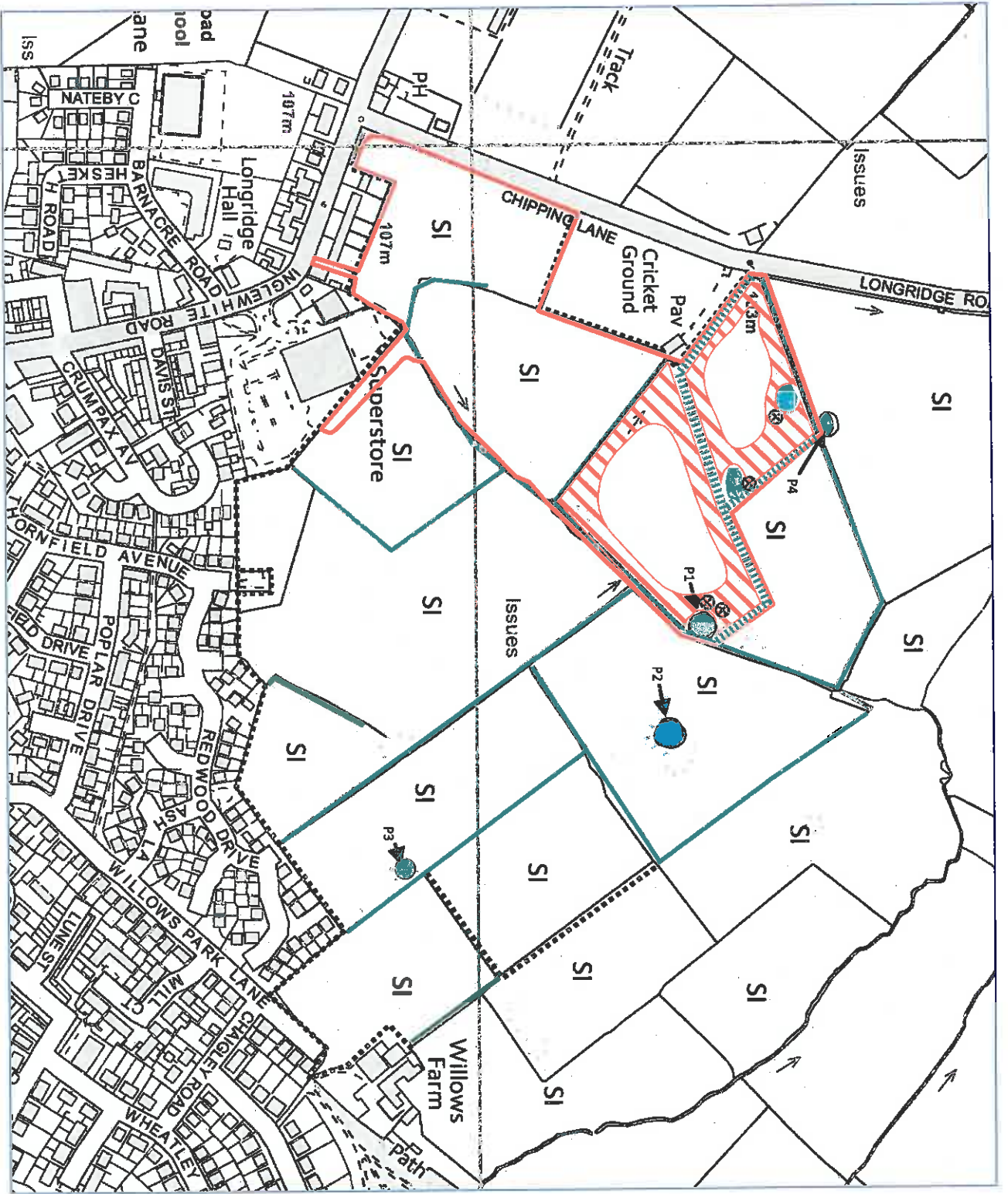


- SI Species Poor
Semi-Improved Grassland
- A Amenity Grassland
- Pond
- Category 1 tree
- Category 2 Tree
- Category 3 Tree
- Hedgerow
- Dry stone wall
- Fence
- Site boundary
- T1 Tree number
- H1 Hedge number
- P1 Pond number



Project: Bowland Meadows, Land East of Chipping Lane, Longridge
 Drawing Title: Habitat Features Plan
 Scale: As Shown (Approximate)
 Drawing No.: 2001/P04
 Date: April 2014
 Checked: JMJ/E





- Site boundary
- Semi-improved Grassland
- Existing pond
- Pond number
- Hedgerow
- Dry stone wall
- Fence
- New pond to be created
- New species rich hedge to be created
- Rough unmanaged grass margins to be created
- Amphibian refuge



Project: Bowland Meadows, Land Easement of Chipping Lane, Longridge
 Drawing Title: Great Crested Newt Habitat Enhancement Strategy
 Scale: As Shown (Approximate)
 Drawing No.: 20031/PZ2
 Date: April 2014
 Checked: JMK/S



Native shrub buffer used to reinforce the northern boundary

Utilise existing hedgerow gaps for informal access to open space

Reinforce and infill planting of existing hedgerows

Existing Tree

Existing Hedge

Proposed Tree

Proposed Hedge

Private Gardens

Public Open Space

Rough Grassland / Wildflower margins

Seasonal Bulb Planting

Swale Planting

Existing Cricket Pitch

Low mature hedgerow with both native and fastigate trees to enclose the existing cricket pitch, offering glimpsed views through as the vegetation matures

Possible swale planting mix

Some enclosure of the play space with native hedgerows and railings

Mown paths through rough grassland / wildflower margins

Native shrub planting on side of ditch to screen boundary with adjoining Garage

Play Space (LEAP)








Consistent fencing throughout used to improve rear boundaries.

Double staggered native hedgerow interspersed with native trees characteristic of the Chipping Lane frontage

Greater 'sense of openness' at the proposed entrance with native hedgerows set back and seasonal planting proposed for gateway verges

Re-instate railings



-  Existing Tree
-  Existing Hedge
-  Proposed Tree
-  Proposed Hedge
-  Informal Open Space
-  Rough Grassland
-  Informal Paths