

List Entry Summary

This building is listed under the Planning (Listed Buildings and Conservation Areas) Act 1990 as amended for its special architectural or historic interest.

Name: PAIR OF GATEPIERS ON ROADSIDE, SOUTH OF TOWN FARMHOUSE

List Entry Number: 1165135

Location

PAIR OF GATEPIERS ON ROADSIDE, SOUTH OF TOWN FARMHOUSE, PENDELTON VILLAGE

The building may lie within the boundary of more than one authority.

County: Lancashire

District: Ribble Valley

District Type: District Authority

Parish: Pendleton

National Park: Not applicable to this List entry.

Grade: II

Date first listed: 27-Apr-1984

Date of most recent amendment: Not applicable to this List entry.

Legacy System Information

The contents of this record have been generated from a legacy data system.

Legacy System: LBS

UID: 183443

Asset Groupings

This List entry does not comprise part of an Asset Grouping. Asset Groupings are not part of the official record but are added later for information.

List Entry Description

Summary of Building

Legacy Record - This information may be included in the List Entry Details.

Reasons for Designation

Legacy Record - This information may be included in the List Entry Details.

History

Legacy Record - This information may be included in the List Entry Details.

Details

SD 75 39 PENDLETON PENDLETON VILLAGE (North side)

Pair of gatepiers on roadside, ninth 11/124 of Town Farmhouse - GV II

Pair of gatepiers, late C18th. Sandstone ashlar. Square on plan. Each has a bracketed cornice and an acorn finial bisected by an abacus.

Listing NGR: SD7574439557

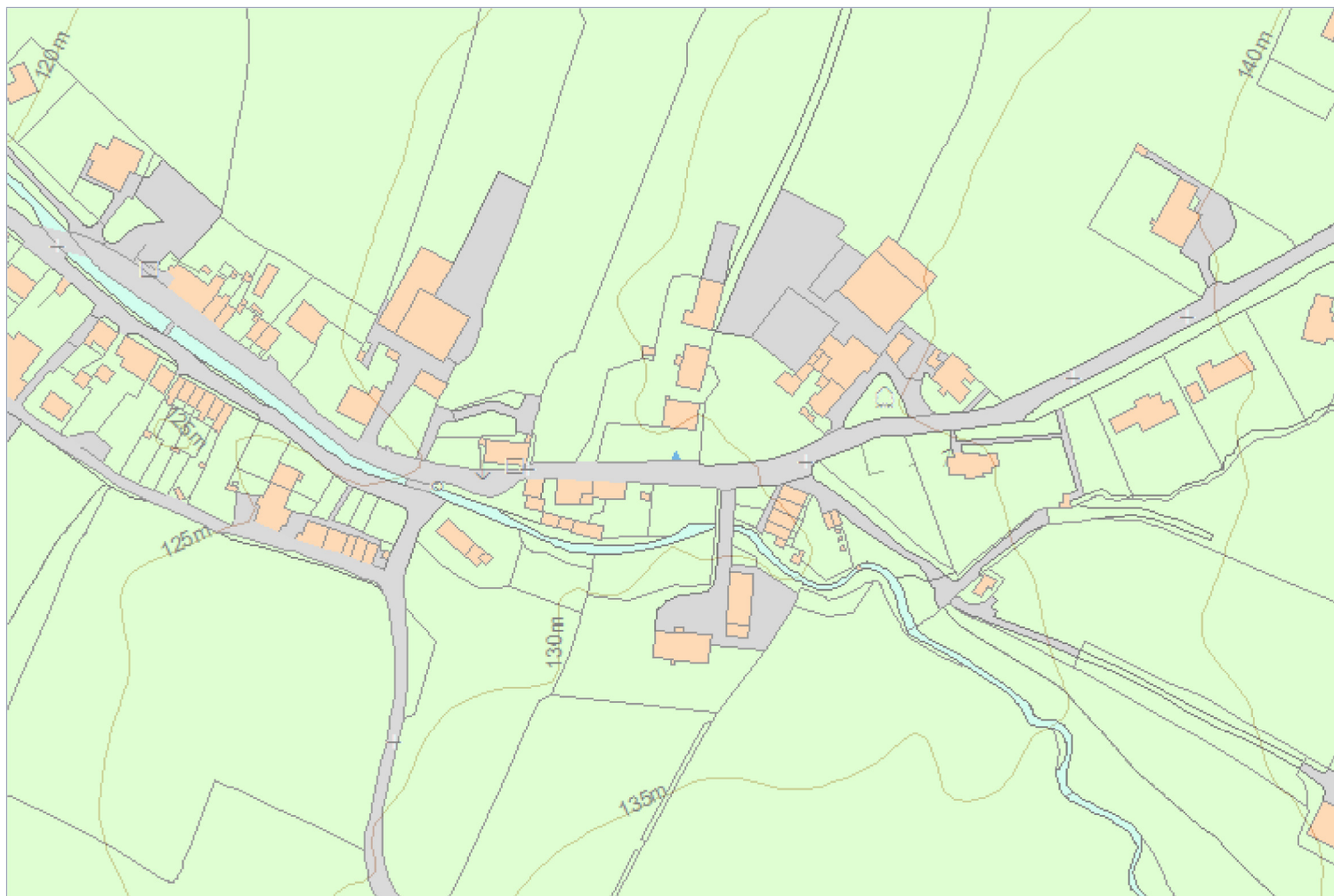
Selected Sources

Legacy Record - This information may be included in the List Entry Details

Map

National Grid Reference: SD 75744 39557

The below map is for quick reference purposes only and may not be to scale. For a copy of the full scale map, please see the attached PDF - [1165135.pdf](#) - Please be aware that it may take a few minutes for the download to complete.



© Crown Copyright and database right 2015. All rights reserved. Ordnance Survey Licence number 100024900.

© British Crown and SeaZone Solutions Limited 2015. All rights reserved. Licence number 102006.006.

This copy shows the entry on 29-Jun-2015 at 02:17:44.