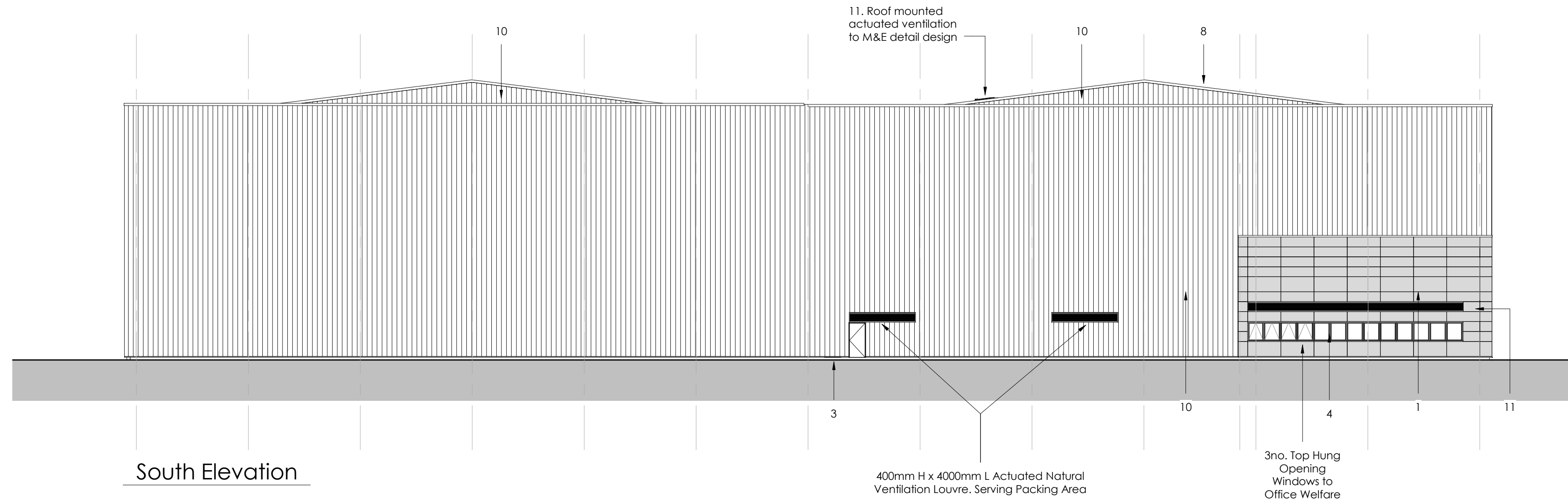


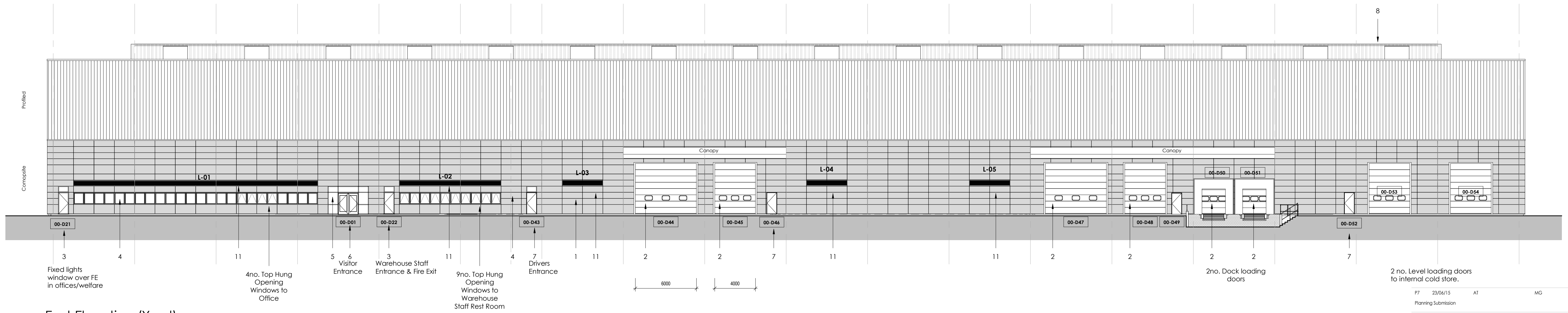
NOTES

- All dimensions and levels are to be checked on site.
- Any discrepancies are to be reported to the architect before any work commences.
- This drawing shall not be scaled to ascertain any dimensions. Work to figured dimensions only.
- This drawing shall not be reproduced without express written permission from AEW.
- Title overlay drawings and ownership boundaries are produced using all reasonable endeavors. AEW cannot be responsible for the accuracy or scale discrepancy of base plans supplied to them.

This drawing contains the following model files:-
1450123-AEW-XX-XX-M3-A-0001 [F3] [S0]



South Elevation



East Elevation (Yard)

External Facade Materials

- Tata Steel Colourcoat Prisma / Kingspan Spectrum Microrib Profile Composite Panels (RAL 9006: Silver-Aluminium)
- Plastisol Coated Sectional Loading Doors with Vision Panels
- PPC Steel Fire Exit Door & Frame
- PPC Aluminium Double Glazing System
- PPC Aluminium Curtain Walling
- PPC Aluminium Entrance Doors
- Personnel door/Drivers entrance, PPC Steel
- Half hipped roof in HPS 200 Ultra / XL Forte profiled metal cladding at 7° pitch behind parapet
- Triple skin, non fragile translucent GRP rooflights. Site assembled. Rooflights to min 10% roof area
- Tata Steel Colourcoat Prisma / Kingspan Spectrum Vertically laid profiled cladding (RAL 9006: Silver-Aluminium)
- Ventilation Louvres to M&E detail design

REV	Date	Drawn by:-	Checked by:-
P7	23/06/15	AT	MG
Planning Submission			
P6	22/06/15	AT	MG
Cladding grid layout added. Stairs to dock bay added.			
P5	08/06/15	AT	MG
Office Louvres re-positioned above suspended ceiling grid			
P4	04/06/15	AT	MG
Roof & Warehouse ventilation louvres added			
P3	28/05/15	AT	MG
Louvres & opening windows added			
P2	16/04/15	AT	AL
Cladding refined			
P1	14/04/15	AT	AL
Initial Issue			
Initial Issue			
Status Purpose of Issue			
S2	For Information		
drawing stage Stage 3			
client			
BAE Systems			
project			
Project Laser, Samlesbury			
drawing title			
Proposed South & East Elevations			
date 14/04/15 drawn AT			
scale @ A1 1:200 checked AL			

