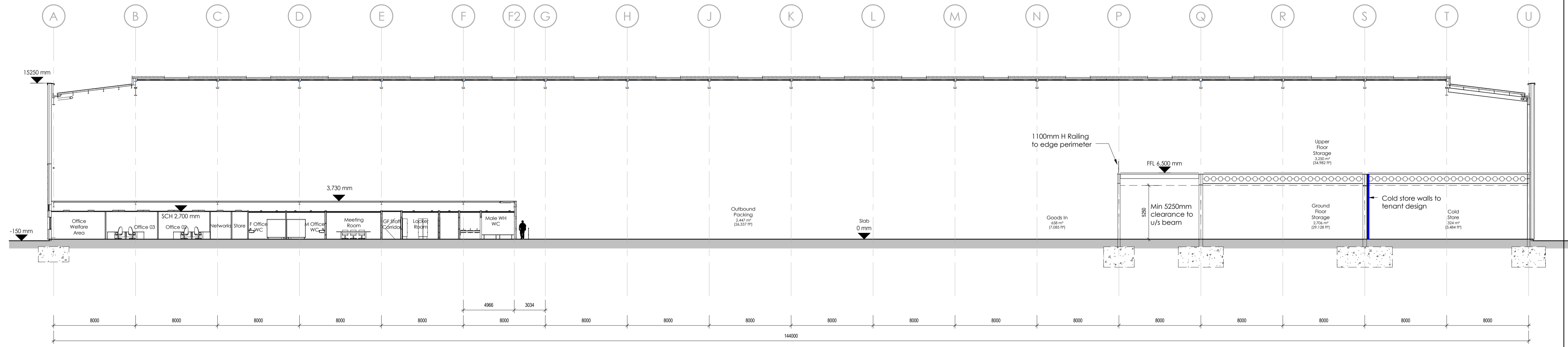


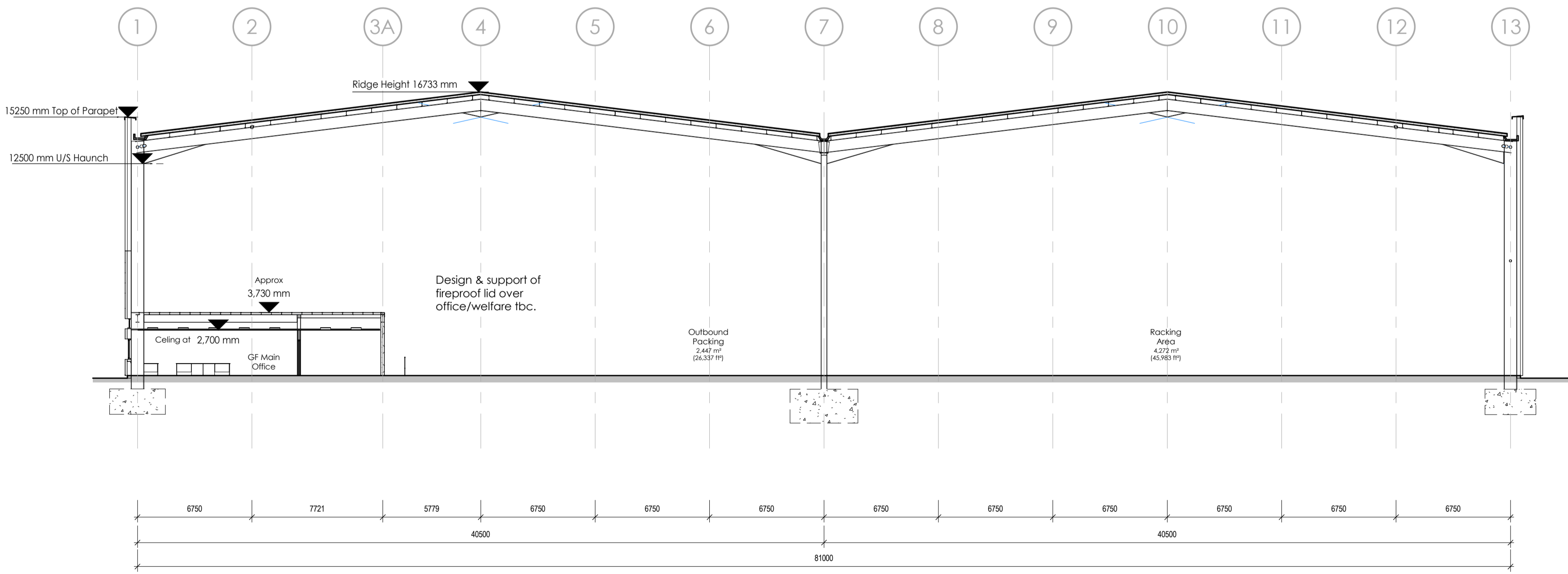
NOTES

- All dimensions and levels are to be checked on site.
- Any discrepancies are to be reported to the architect before any work commences.
- This drawing shall not be scaled to ascertain any dimensions. Work to figured dimensions only.
- This drawing shall not be reproduced without express written permission from AEW.
- Title overlay drawings and ownership boundaries are produced using all reasonable endeavors. AEW cannot be responsible for the accuracy or scale discrepancy of base plans supplied to them.

This drawing contains the following model files:-  
1450123-AEW-XX-XX-M3-A-0001 [P3] [S0]



Section GL 3A  
Scale @ 1 : 200



Section GL C  
Scale @ 1 : 200

P7	23/06/15	AT	AL
Planning Submission			
P6	08/06/15	AT	AL
Upper storage and office floors corrected			
P5	04/06/15	AT	AL
Haunch steel correct.			
P4	17/04/15	AT	AL
Mezzanine notes replaced with upper storage			
P3	14/04/15	AT	AL
FF Office and steel removed			
P2	17/04/15	AT	AL
Mezzanine notes changed to Upper Storage to parapet with trussed bays			
P1	16/02/15	BR	AL
Initial Issue			
REV	Date	Drawn by:-	Checked by:-

Status Purpose of Issue  
S2 For Information

drawing stage **Stage 3**  
client

**BAE Systems**

project

**Project Laser, Sarnesbury**

drawing title

**Building Sections**

date 16/02/15 drawn AT  
scale @ A1 1 : 200 checked AL