

# List Entry Summary

This building is listed under the Planning (Listed Buildings and Conservation Areas) Act 1990 as amended for its special architectural or historic interest.

**Name:** LOWLANDS COTTAGE NEWTON HOUSE

**List Entry Number:** 1072249

## Location

LOWLANDS COTTAGE  
NEWTON HOUSE

The building may lie within the boundary of more than one authority.

**County:** Lancashire

**District:** Ribble Valley

**District Type:** District Authority

**Parish:** Newton

**National Park:** Not applicable to this List entry.

**Grade:** II

**Date first listed:** 16-Nov-1983

**Date of most recent amendment:** Not applicable to this List entry.

---

## Legacy System Information

The contents of this record have been generated from a legacy data system.

**Legacy System:** LBS

**UID:** 183105

---

## Asset Groupings

This List entry does not comprise part of an Asset Grouping. Asset Groupings are not part of the official record but are added later for information.

---

## List Entry Description

### Summary of Building

Legacy Record - This information may be included in the List Entry Details.

## Reasons for Designation

Legacy Record - This information may be included in the List Entry Details.

## History

Legacy Record - This information may be included in the List Entry Details.

## Details

SD 6950 NEWTON NEWTON VILLAGE

18/54 Newton House and Lowlands Cottage

GV II

Pair of houses possibly originally a row of houses, late C18th. Slobbered rubble with slate roof. 3 storeys, 5 bays. Windows tripartite with plain stone surrounds and square mullions. The doors, with plain stone surrounds, are between bays 2 and 3 and bays 4 and 5. The chimneys are between bays one and 2, between bays 3 and 4, and on the right-hand gable. The left-hand (west) gable wall has 2 doors with plain stone surrounds, the right-hand one being covered by a modern brick porch. The right-hand gable has a door and a window, both with plain stone surrounds. The ground level at the rear is higher, and the rear wall has a one-light and a 2-light window, both with plain stone surrounds. At the right-hand end is a 1st floor doorway with stone surround, reached by external stone steps.

Listing NGR: SD6972650488

---

## Selected Sources

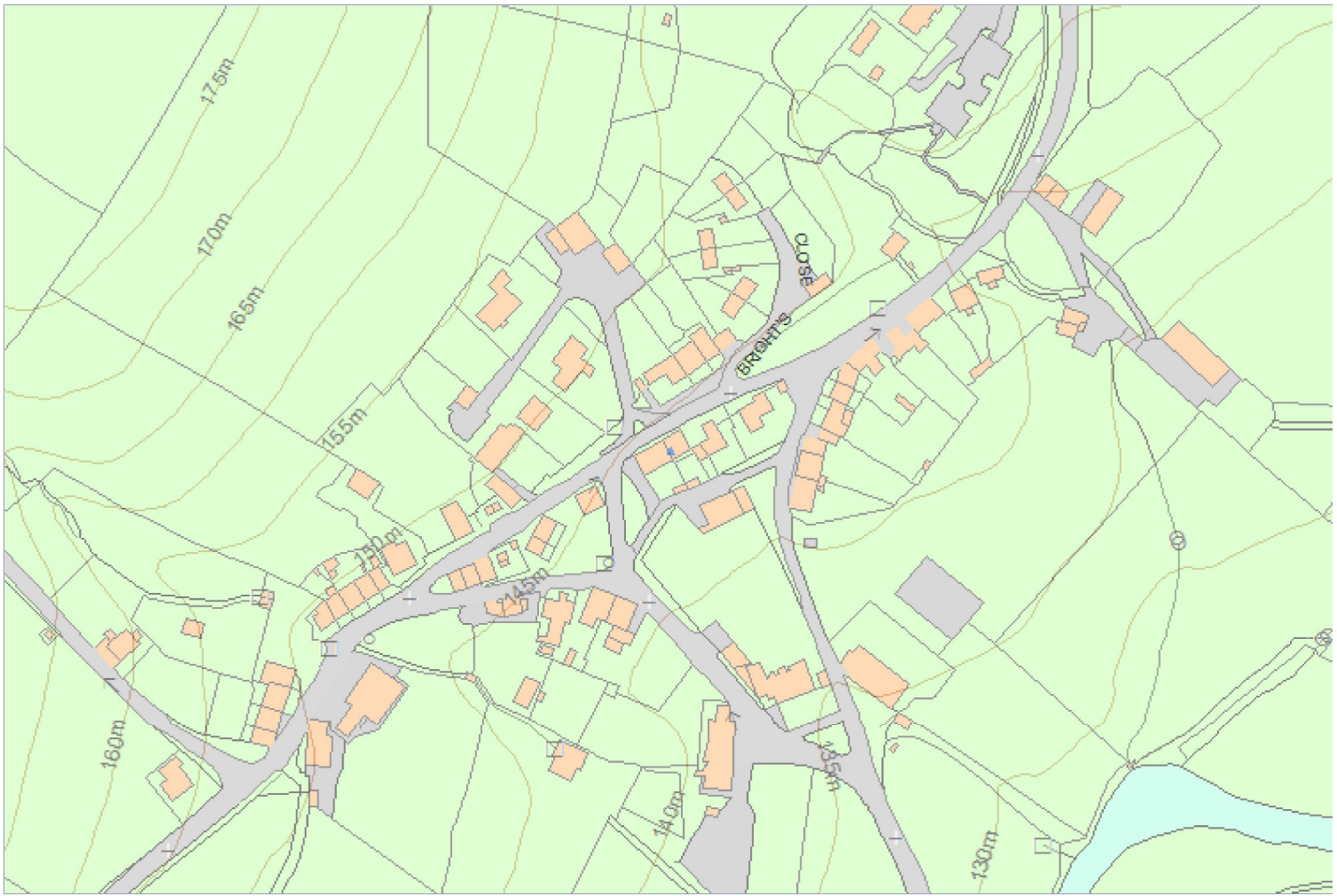
Legacy Record - This information may be included in the List Entry Details

---

## Map

### National Grid Reference: SD 69726 50488

The below map is for quick reference purposes only and may not be to scale. For a copy of the full scale map, please see the attached PDF - [1072249.pdf](#) - Please be aware that it may take a few minutes for the download to complete.



© Crown Copyright and database right 2015. All rights reserved. Ordnance Survey Licence number 100024900.

© British Crown and SeaZone Solutions Limited 2015. All rights reserved. Licence number 102006.006.

This copy shows the entry on 09-Sep-2015 at 04:11:17.