

Chatburn Old Road

d=0.45

Full Planting Schedule													
Flora													
Name	Code	Height	Form	Grass	Grass	Grass	Grass	Grass	Grass	Grass	Grass	Grass	Grass
Advanced native hedge mix	871nr	Crataegus monogyna	60-80										
11nr	Euo Erme	5L											
68nr	Fag syl	2L											
1nr	Car Col	12-14cm											
14nr	Euo Erme	5L											
1nr	Pru Sub	12-14											
106nr	Fag syl	2L											
102nr	Fag syl	2L											
104nr	Fag syl	2L											
23nr	Euo Gol	5L											
63nr	Fag syl	2L											
14nr	Hb pn P	5L											
14nr	Mscn sn G	5-7.5L											
28nr	Pms laura	OL 5L											
2nr	Sor auc												
3nr	Sor auc												
2nr	Mal syl												
4nr	Aln glu												
4nr	Ace cam												



Specification for Soft and Hard Landscaping Works

Unless otherwise specified:-

A. Setting Out

1. Planting shall be set out exactly as shown on the drawing, and measured from existing fixed points. Curved beds shall be set out using radii marked on the ground using painted staves and a line between, or with site marker pins. The junction between convex and concave curves shall be set out to form a smooth and even flaring line. Check that all setting out conforms to the plans before cultivation and planting works are carried out. Failure to do so may result in rejection of the work by the landscape architect and may require amendment to the contractor's expense.

2. All planting beds shall be a minimum of 1 metre wide, except where there is insufficient space, due to the constraints of walls and path edgings and their foundations. Work shall be carried out to the bed line space free from concrete footings before planting. If the bed is sealed with concrete, then the landscape contractor shall contact the site manager or landscape architect to determine if footings are excessive and can be reduced or else, the bed can be paved. The width of all beds will be checked by the inspecting landscape architect and where the width is not as shown, the contractor shall not cultivate them to the specified width as the work is in progress.

B. Ground Preparation

1. For planting herbicide application shall be applied by suitable spraying apparatus using an approved translated system: herbicide to manufacturer's instructions and to 1997 Control of Pesticides Regulations and 2003 COSHH regulations on all beds, except those which are both weed free and are to receive geotextile sheet or geotextile mat. Spray immediately if any weeds are present. If any are shown, but there must be a delay before planting, or the area is to be seeded, spray after one month following cultivation, to allow dormant seed to germinate. All spraying shall be carried out by skilled and qualified operatives, using protective clothing in suitable weather (no wind and any damage caused by spray drift, from incorrect usage or spillage, shall be rectified at the contractor's own cost. Repeat as necessary to ensure complete kill and take off all dead material from site.

2. Carry out the following works to the existing topsoil on site to ensure it conforms to BS 3882:2007, being free from rocks larger than 50mm diameter, concrete, all roots, wire, brick, and have less than 20% clay. Allow for pre-planting of herbicide as above. Fertilise with 100g per square metre of Phos "Neotronics" slow release fertiliser, in accordance with the manufacturer's instructions. For beds less than 5 metres in width, fork over thoroughly or mulch re-lay to a depth of 300mm, ensuring that the substrate and topsoil are completely broken up and free draining, relieving any compaction. For beds greater than 5 metres in width, break up the substrate and topsoil using a tractor mounted subsoiler or ripper at 500mm centre to a depth of 500mm, except where there are services, or within 10 metres of tree stems or 3 metres of existing hedges. Do not use 10 areas where roots greater than 100mm diameter are encountered.

3. Determine before submitting a tender, the extent of support from the site manager with ground preparation, ensure all of planting beds is graded to a level 100mm below adjacent grass or paved surfaces, 100mm below where signs/verges set match is not specified, within 400-600mm of edges to ensure bark or wood chip mulches are retained. Where grass is proposed, then the soil level shall be 100mm below adjacent paved surfaces, to receive rain water run-off. The landscape contractor is responsible for ensuring that the final ground conforms to the specified levels before the contractor has finished to supply and spread topsoil to the received level. The landscape contractor shall allow for adjustment of levels, as specified above, including for re-grading and topsoil. Where levels are sloping, ensure that levels below the specified levels below pavement & grass surfaces, within 100mm of the edges of the bed. This is to allow for sheet mulch and bark or wood chip mulch so that mulch does not spill out on to pavements and also to allow surface water to drain from areas to be planted areas.

4. For sloping areas to be mulched adjacent to paved areas, topsoil levels shall be graded flush with the finished pavement level for up to 100mm below, to allow surface water to drain from pavements to soft areas. Soil of grass areas should therefore never be paved or paved areas. Soil levels more than 10mm below pavement edges will cause moisture damage on cutting.

5. Imported topsoil (where specified and sanctioned by the employer) for making up ground, shall conform to BS 3882:2007, and be free from rocks (over 50mm diameter), concrete, rocks, wire, brick, and have less than 20% clay. Such soil shall be cultivated as set out above. Representative samples shall first be approved by the landscape architect before being supplied to site. No imported soil shall be supplied to site without a written instruction.

C. Planting

1. All planting must be carried out in accordance to the specification and schedule of quantities accompanying these drawings. Refer to the specification for the preparation of existing topsoil and required depths for planting, tending, and standard trees, and also for maintenance requirements.

2. No substitutions will be accepted without the prior agreement of the inspecting landscape architect. The contractor shall replace at once at the own cost any stock size, species or variety of plant which has not been specified on the planting plan and schedule, unless prior agreement is a substitution by the landscape architect has been received. All plants shall be true to name, specified to the standard of plants and trees shown. All plants, other than ground covers, shall be 100-100mm height and spread, or otherwise specified for the plant size by the BFA National Plant Specification and be healthy, disease free stock, not yet branched, leggy or sapling's. There shall be a minimum of 5 plants per square metre. This specification is the minimum standard required and any work falling below this standard, in the opinion of the inspecting landscape architect, shall be lifted and replaced at the contractor's expense.

3. All shrubs, herbaceous plants, vines and treepieces shall be matured in on planting with 20 litres per square metre. Trees shall be matured in with 25 litres per tree position. Water throughout during the contract period at weekly intervals with 30 litres of water.

4. Proposed large feathered or standard trees to be true to the species, variety and size as specified on the planting plan, to include 1.6m chestnut stakes 600mm above ground and 1000mm below ground and 150mm with spacing device positioned 20mm maximum from the top of the post.

5. Turf to be cultivated grass such as "Baldwin", or other of similar quality and source, approved by the landscape architect. The contractor shall replace at once any turf rejected by the landscape architect at his own cost.

6. Self-clinging climbing shrubs or wall shrubs shall be trained to the wall fence with heavy duty, plastic coated garden wire. Training wires shall be attached vertically to the wall fence by means of 120mm long stainless steel wire screw fittings. Position this at 200mm from ground, and along the wire tightly between the fittings. Train the climber to the wire with plastic coated garden wire tags.

7. Training varieties of climber shall be trained to wall-fences by mounting ready-made trellis panels 1.8 x 1.8m generally that 1.8 x 0.9m for corners or where space is restricted. Include for adapting any panels for locations where walls or fences are lower than 1.8m. Fix trellis panels to the wall-fences using non-rusting screws 150mm long (to be approved), incorporating 50mm cube wood spacing blocks to ensure the panel is mounted sufficiently far from the wall fence to allow training of stems. Ensure that all timber is pressure impregnated with a non-phytotoxic preservative and then painted with a dark brown non-phytotoxic preservative wood stain such as "Sikkens" "Woods" "medium" or similar and approved. Ensure that the trellis is in contact with the ground. Train the climbing shrubs to the trellis with plastic coated garden wire tags.

8. Climbers specified outside proposed shrub beds shall have specially prepared obelisks. Obelisks shall be 400mm x 400mm x 600mm deep (minimum size), and be backfilled with topsoil (from site - unless otherwise stated). Ensure the base of the pit is thoroughly broken up and free draining before back filling with topsoil. Ensure no damage to foundations and services, and make good all structures and surfaces disturbed. Finish with 50g of Phos "Neotronics" slow release fertiliser. Water with 15 litres of water per climber per pit.

D. Mulch

1. When specified by the additional specification notes on this plan, supply and spread appropriate "Woodchip Fibre" sheet mulch over planting beds, previously cultivated, graded and fertilised topsoil before planting, and peg down with Weetopac pegs at a minimum of 500mm centres, 100mm on edges and beds less than 1m wide. Preparing this directly is essential to prevent gaps of material becoming empty. Refer to the specification for "Woodchip Fibre" sheet mulch on plan.

2. Following planting supply and spread evenly "Barkwood Industries" "Barkwood" to a depth of 100mm (15mm if no sheet mulch is specified), over all plantings, except where specified to be 50mm below pavement or grass levels to avoid any spillage onto pavements or lawns. N.B. no substitution of mulch type will be accepted. It is essential to have a no-fines, large particle, brown wood chip, to reduce wood growth, reduce water loss and prevent rapid break down.

E. BS Codes

1. All workmanship and materials shall conform to the following codes:-

- General landscape operations (including hard surfaces) - BS 4428:1988.
- Trees in relation to construction - BS 5827:2012 and BS 6349:1996.
- BS 3998:2018 (recommendations for tree works unless otherwise specified).
- Arboricultural Association - Standard Conditions of Contract and Specifications of Tree Works 1996.
- Nursery stock in accordance with best horticultural trade association nursery stock specification "National Plant Specification 2011".
- Plants shall conform to:-
 - BS 3069:1 1982 Nursery Stock - Specification for trees and shrubs.
 - BS 3069:2 1980 Nursery Stock - Specification for roses - AMD 6628.
 - BS 3069:4 1984 Nursery Stock - Specification for forest trees.
 - BS 3069:5 1985 Nursery Stock - Specification for poplars and willows.
 - BS 3069:9 1988 Nursery Stock - Specification for grasses, cereals and tubers.
 - BS 3069:10 1990 Nursery Stock - Specification for ground cover shrubs.
 - CPSE - Committee for Plant Establishment, Handling and establishing landscape plants 1996, Part 3.
- Classify for Landscape Works BS 3975: Part 4: 1999.
- BS 3069:10 1990 Nursery Stock - Specification for ground cover shrubs, CPSE - Committee for Plant Establishment, Handling and establishing landscape plants 1996, Part 3.
- Turf - BS 3069:1998 recommendations for turf for general purposes.
- Seeding - BS 3069:1998 recommendations for turf for general purposes.
- Soiling - BS 3882:2007.
- Prevention - Control of Pesticides Regulations 1997, The Health and Safety at Work Act 1974, the COSHH Regulations 2003, the product COSHH sheet Water Supply (Water Quality) Regulations amended 1991, Control of Pollution Act 1974, Biodegradable Act 1987, Wildlife and Countryside Act 1981.

F. General Notes for the Developer

1. Tree Protection

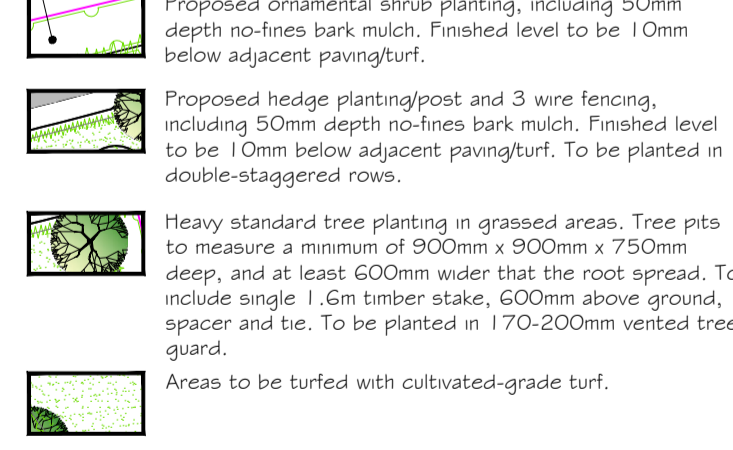
Any existing trees to be retained, are the responsibility of the main contractor on site who shall take all necessary protective measures set out in BS 5827:2012 to ensure no damage to stems or roots, to prevent contamination from vehicles or storage of materials, contamination of soil from spillages, scorching from fires and instability or stress from changes of soil level. The landscape contractor is however responsible for ensuring that neither plant, materials or labour are cause of any damage to existing trees, and the employer, the landscape contractor shall replace at once any tree damaged on site, supplying and planting a tree of the same species and size, at his own cost. Suitable protective measures shall be checked during the first 14 days of site work.

2. Ground Work

- Soil levels for sheet beds and grass areas should have any compacted subgrade thoroughly broken up by machine before instructing the ground worker to spread topsoil or the landscape contractor to commence work or the beds will become waterlogged in wet weather and the plants will rot.
- Top soil spread from on site should be to the following minimum depths:- Sheet beds 300mm. Grass areas 150mm allow for excavation of 115mm of the subgrade for sheet beds to have beds 65mm below finished pavement or grass areas in order to receive sheet and bark mulch, 100mm below where sheet mulch is not to be used. Top soil will be dug to the landscape contractor. Top soil shall be proved for grass areas flush with any areas of paving and after settlement, the soil level should be no greater than 10mm above paved areas to allow for turf. For areas to be grass seeded, the soil level shall be flush with any finished paved surfaces after settlement (to a maximum of 5mm below) to allow for rain water to drain onto soft surfaces. Settlement shall be no greater than the tolerance given in problems will be encountered with moving the blades in danger of causing concrete edging) or where soil in ground of pavements, then drainage problems will be encountered.
- Existing topsoil and imported soil shall conform to BS 3882:2007, and be free from compaction, rocks/blocks greater than 50mm diameter, concrete, rocks, wire, brick, all cement and builders rubble. Soil shall have a clay content of less than 20%.

3. Herbicide

- Hard works, unless otherwise agreed, shall be carried out by the developer or main contractor. All materials and workmanship shall be in accordance with the construction details and the layout plan.
- All paths and edging shall be set out precisely to line and level, with all corners marked on the ground using painted pegs and setting or site marker pins, achieving finished ground area. Setting out shall be approved with the landscape contractor and subsequently the landscape architect.
- Hard surfaces shall be constructed after suitable base courses have been laid, taking full account of local site conditions, with spots and subsoils. The indicative depths of base courses are minimum depths ensuring suitable substrate conditions.
- All network shall be finished for dipper galvanisation in accordance with BS 521:2010. The galvaniser shall be responsible for the thorough removal of all galvanising oxides (blisters) to the complete satisfaction of the Landscape Architect. The de-coating contractor shall prepare the galvanised surface by washing with detergent and water and scrubbing with a scouring pad used of dirt, grime, white rust & sulphates have been removed & then allowed to dry thoroughly. Supply and paint "Iron Oxide" from Sika Ltd (tel: 01707 24444) applied with a brushwork brush activity in accordance with the manufacturer's instructions, COSHH regulations and the product COSHH sheet. Apply 250 coats of paint with a dry film thickness of 100 microns per coat. Apply paint only when galvanised surface is thoroughly dry at temperature above five degrees Celsius and in any event above the current dew point temperature. Paint work will be subject to inspection by experts and if found wanting, shall be stripped off, re-prepared and applied entirely at the de-coating contractor's own cost.
- All wood work to use ACQ water based preservative applied to vacuum pressure treated or pressure treated or other similar and approved company. The timber shall then be stained with 20% coats of "Sikkens" "Classic", colour "Walnut" activity in accordance with the manufacturer's instructions, COSHH Regulations 2003 and product COSHH sheet.



PDP Associates
 01788 54130
 info@pdpassociates.org.uk

Client
Mr. R. Jackson/Gary Hoerty Associates

Project
Chatburn Old Road, Clitheroe

Drawing title
Plot landscape proposals

Scale
1:250 @ A1

Drawn by
PDP

Date
January 2016

Drawing No.
c-1363-01