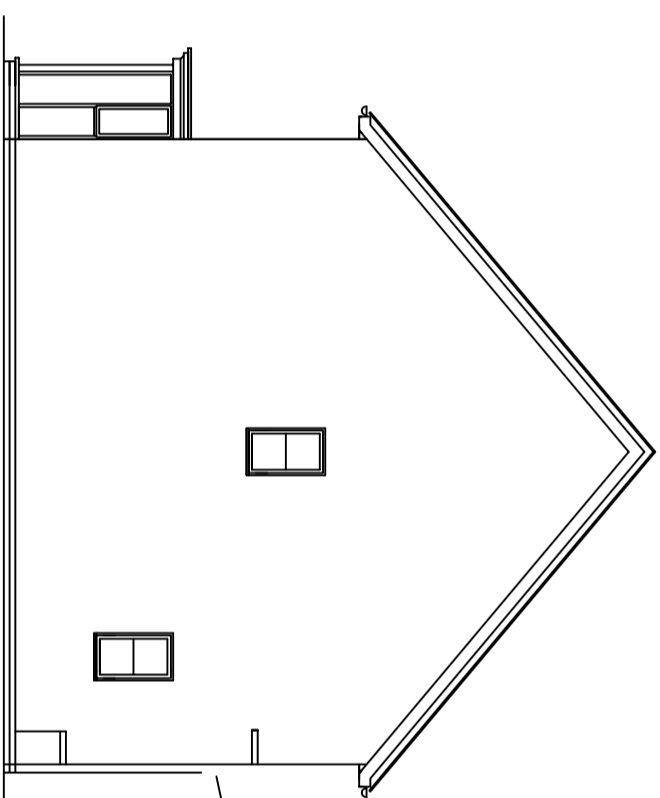
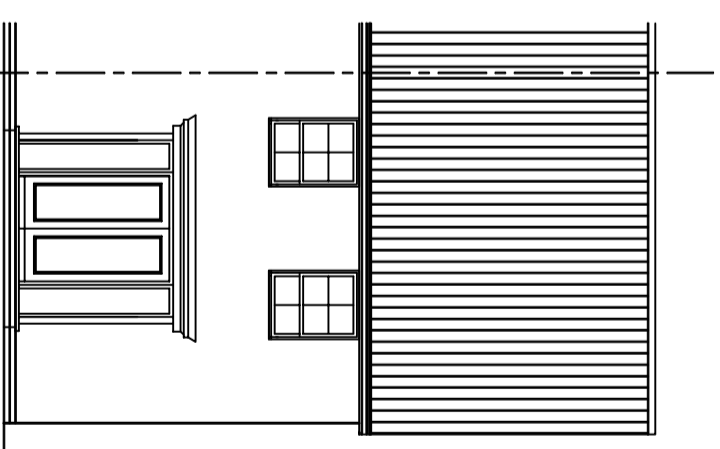




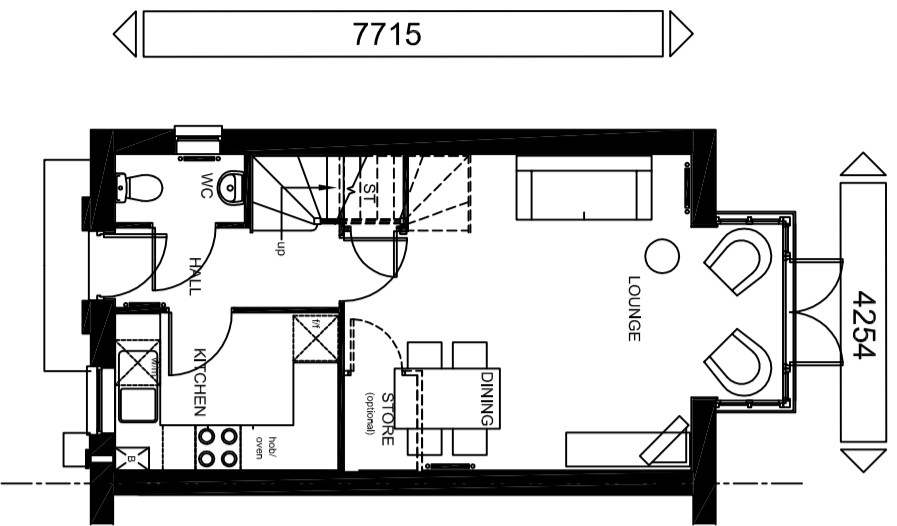
FRONT ELEVATION



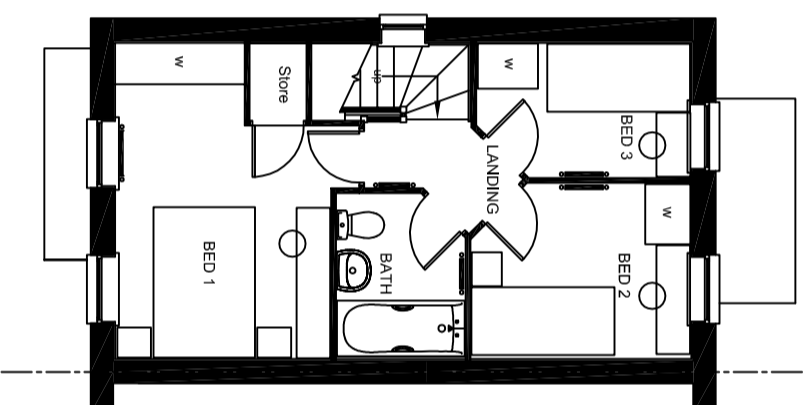
SIDE ELEVATION



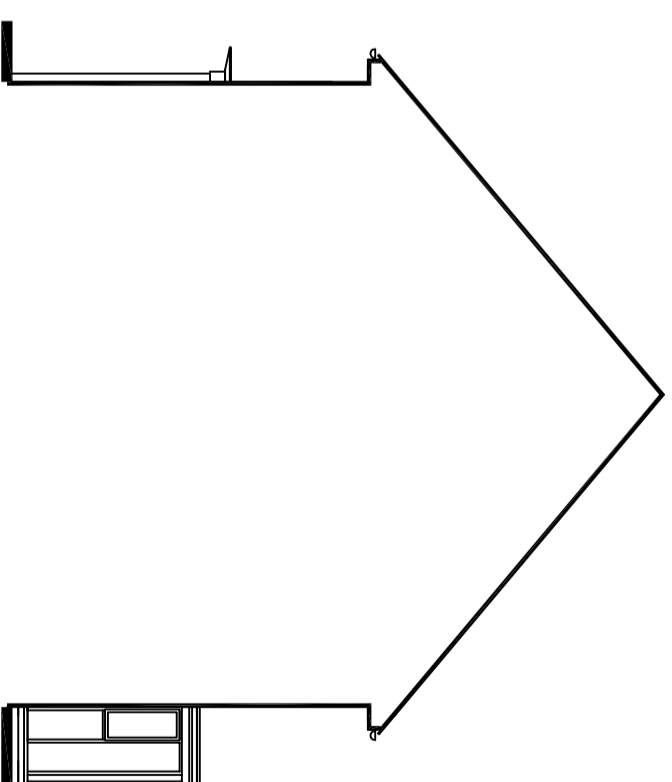
REAR ELEVATION



GROUND FLOOR PLAN



FIRST FLOOR PLAN



SIDE ELEVATION / SECTION

STATESMAN RANGE
FLOOR AREA - 737sqft / 68.5m²

PLANNING DRAWING - CLASSIC

Date	DEC 2010	Scale	1 : 100 @ A3
Drawn by	GDT	2010/BAM/C/01	
Checked by	GDT	STATESMAN RANGE	
Revision	D		

House Type Code

BBPT 00CE (END)
BBPT 00CI (MID)
BBPT 00CS (SEMI)

Group Design & Technical Department

BARRATT
 DEVELOPMENTS PLC

City West Business Park
 Scotswood Road
 NEWCASTLE UPON TYNE
 NE4 7DF

Tel: 0191 298 6100
 Fax: 0191 256 8324

Barratt House

NEWCASTLE UPON TYNE

NE4 7DF

Tel: 0191 298 6100
 Fax: 0191 256 8324

2010 Range - The Bampton

WARNING TO HOUSE-PURCHASERS:
 Buyers are warned that this is a working drawing and the contents of this drawing may be subject to change during the progress of the build process. The layout, form, content and dimensions specified are included for general guidance only. The finishes or features shown may alter in respect of individual properties. Whilst we make every effort to ensure our drawings are up to date there may from time to time be an unavoidable delay in updating these due to changes in regulations and/or re-planning. Purchasers are advised to check with the Sales Adviser whether any alterations have been made to this drawing. The contents of this drawing do not constitute a contract, part of any contract or warranty unless specifically incorporated into the contract. They should not be relied upon for the purposes of entering into a contract to purchase any property.