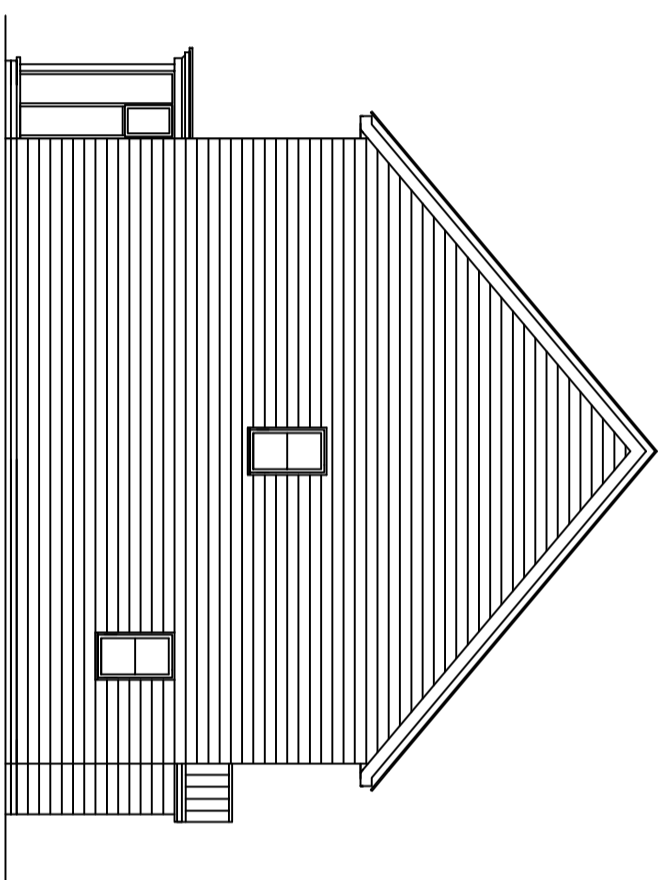
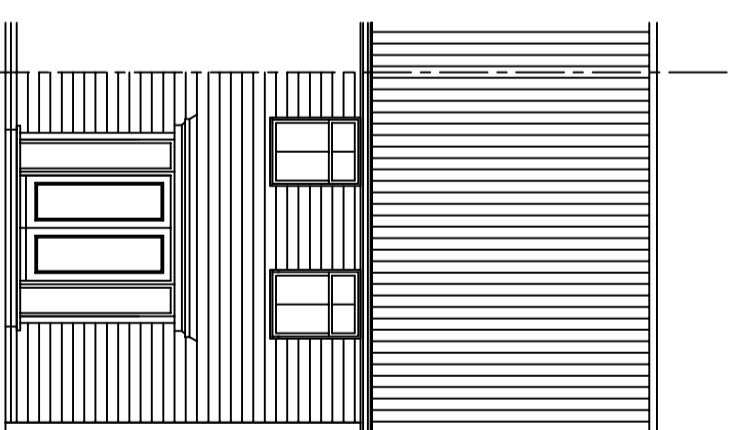


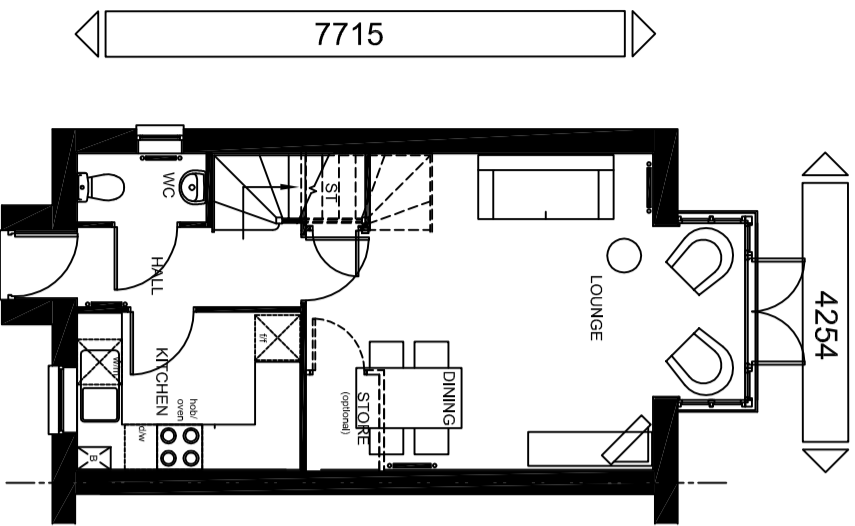
FRONT ELEVATION



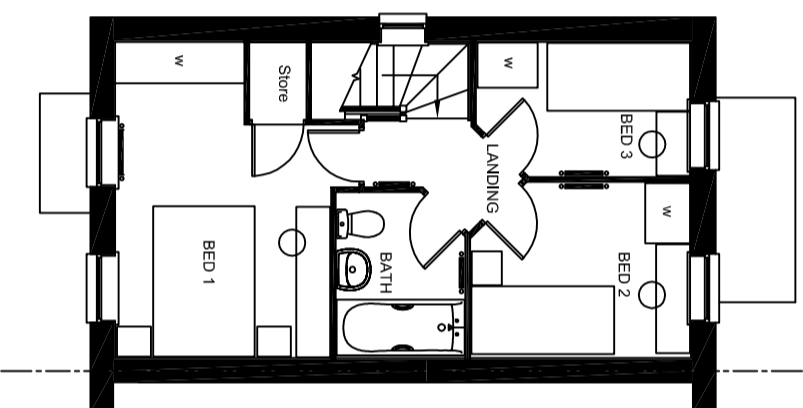
SIDE ELEVATION



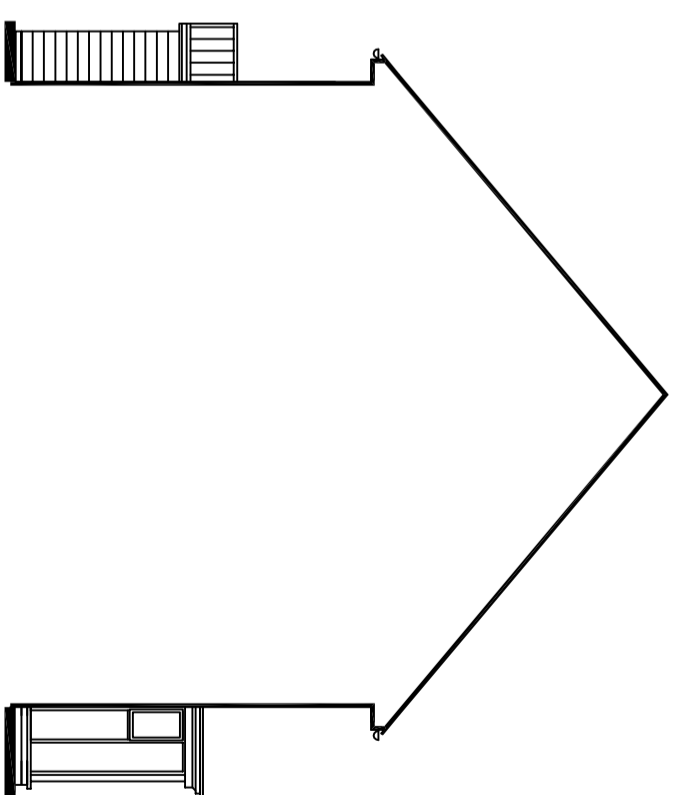
REAR ELEVATION



GROUND FLOOR PLAN




FIRST FLOOR PLAN



SIDE ELEVATION / SECTION

STATESMAN RANGE
FLOOR AREA - 737sqft / 68.5m²

PLANNING DRAWING - CLASSIC



BARRATT
 MANCHESTER DIVISION

Barratt Homes (Manchester Division)
 4 Brindley Road
 City Park
 Manchester
 M16 9HQ

Tel: 0161 872 0161
 Fax: 0161 855 2828

House Type Code	-
-----------------	---

2010 Range - The Bampton

WARNING TO HOUSE-PURCHASERS:
 Buyers are warned that this is a working drawing and the contents of this drawing may be subject to change during the progress of the build process. The layout, form, content and dimensions specified are included for general guidance only. The finishes or features shown may alter in respect of individual properties. Whilst we make every effort to ensure our drawings are up to date there may from time to time be an unavoidable delay in updating these due to changes in regulations and/or re-planning. Purchasers are advised to check with the Sales Adviser whether any alterations have been made to this drawing. The contents of this drawing do not constitute a contract, part of any contract or warranty unless specifically incorporated into the contract. They should not be relied upon for the purposes of entering into a contract to purchase any property.

Date	JULY 2016	2010/BAM/S/01 STATESMAN RANGE
Drawn by	SC	
Checked by		
Revision		Scale
		1 : 100 @ A3