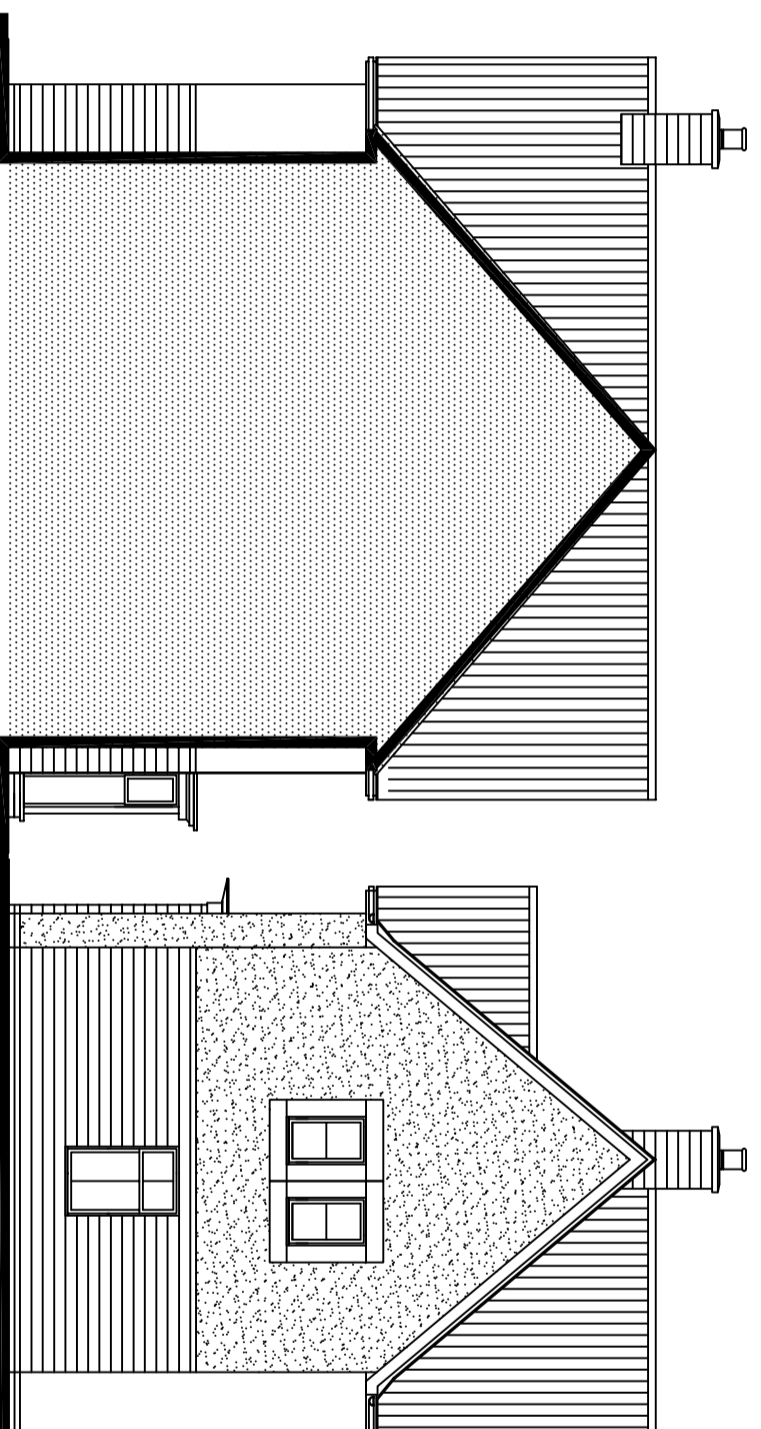
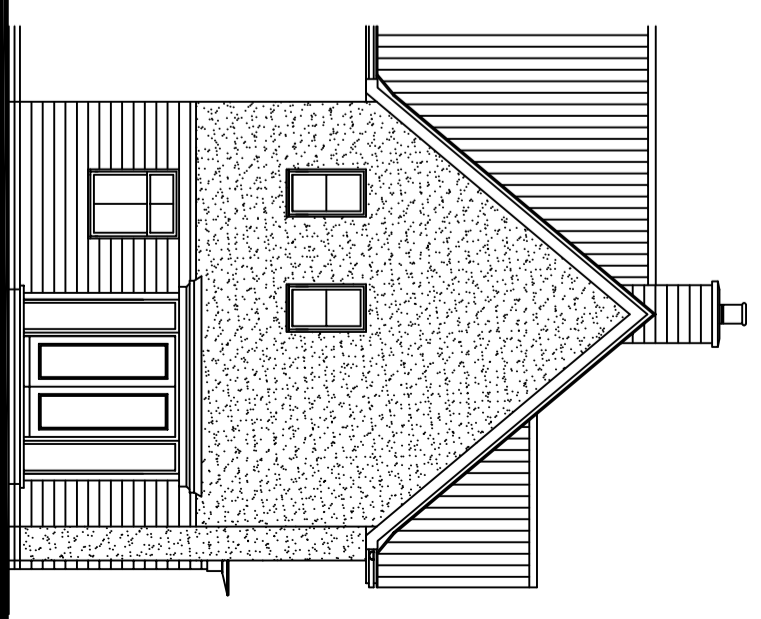




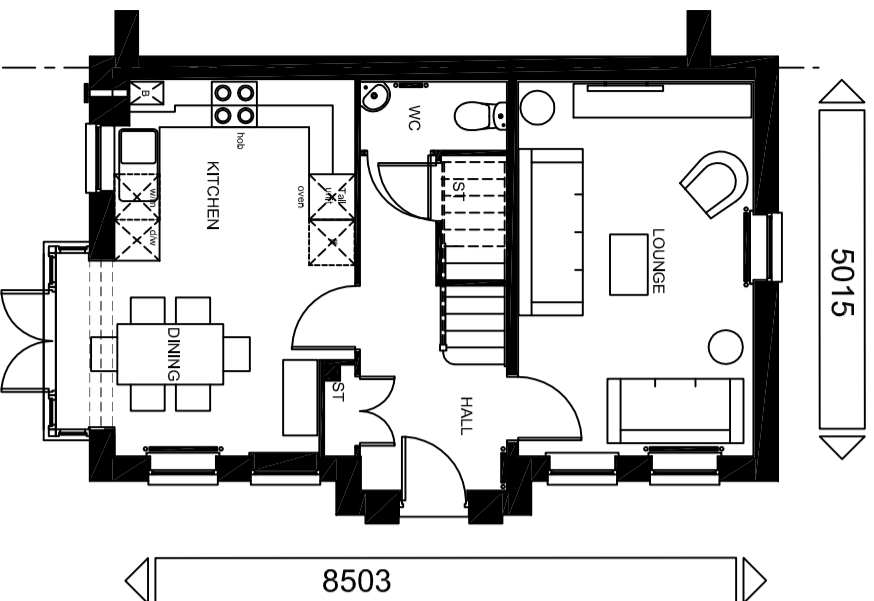
**FRONT ELEVATION**



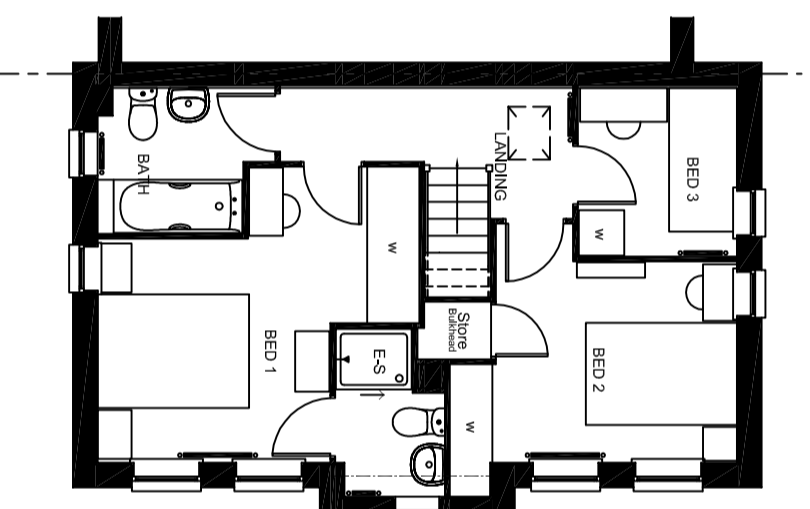
**SECTION / REAR ELEVATION**



**SIDE ELEVATION**



**GROUND FLOOR PLAN**



**FIRST FLOOR PLAN**

**Barratt Homes (Manchester Division)**  
4 Brindley Road  
City Park  
Manchester  
M16 9HQ

**BARRATT**  
MANCHESTER DIVISION

Tel: 0161 872 0161  
Fax: 0161 855 2828

House Type Code

**AMBASSADOR RANGE**  
**FLOOR AREA - 956 sqft / 88.8 m<sup>2</sup>**

PLANNING DRAWING - CLASSIC

**2010 Range - The Morpeth 2**  
**WARNING TO HOUSE-PURCHASERS:**  
Buyers are warned that this is a working drawing and the contents of this drawing may be subject to change during the progress of the build process. The layout, form, content and dimensions specified are included for general guidance only. The finishes or features shown may alter in respect of individual properties. Whilst we make every effort to ensure our drawings are up to date there may from time to time be an unavoidable delay in updating these due to changes in regulations and/or re-planning. Purchasers are advised to check with the Sales Adviser whether any alterations have been made to this drawing. The contents of this drawing do not constitute a contract, part of any contract or warranty unless specifically incorporated into the contract. They should not be relied upon for the purposes of entering into a contract to purchase any property.

Date	JULY 2016	Scale	1 : 100 @ A3
Drawn by	AU	2010/MOR/SR/01 AMBASSADOR RANGE	
Checked by			
Revision			