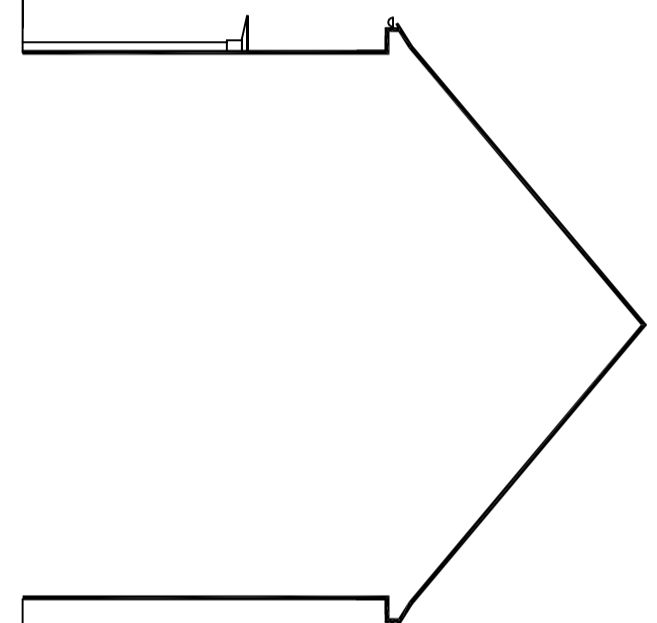
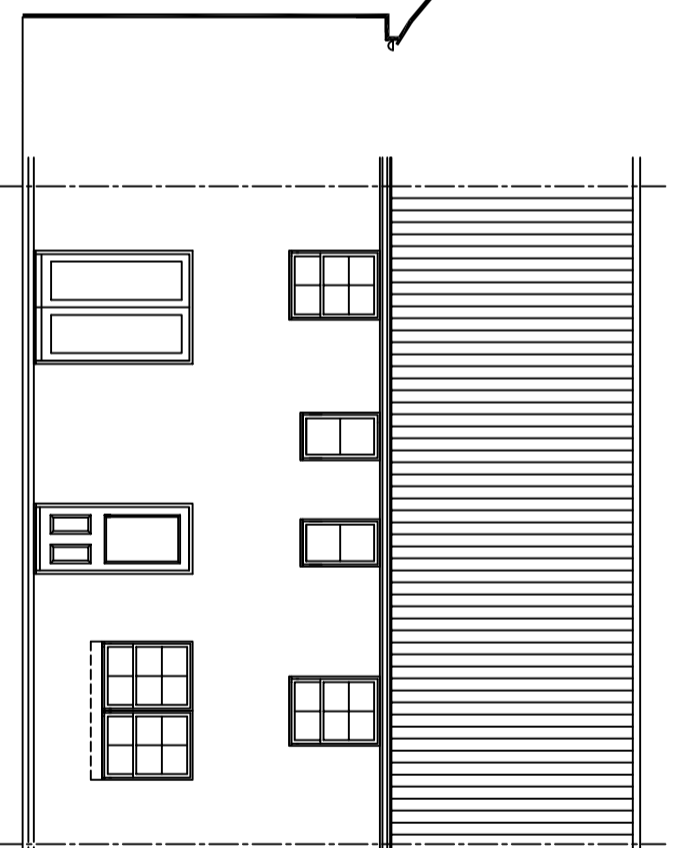


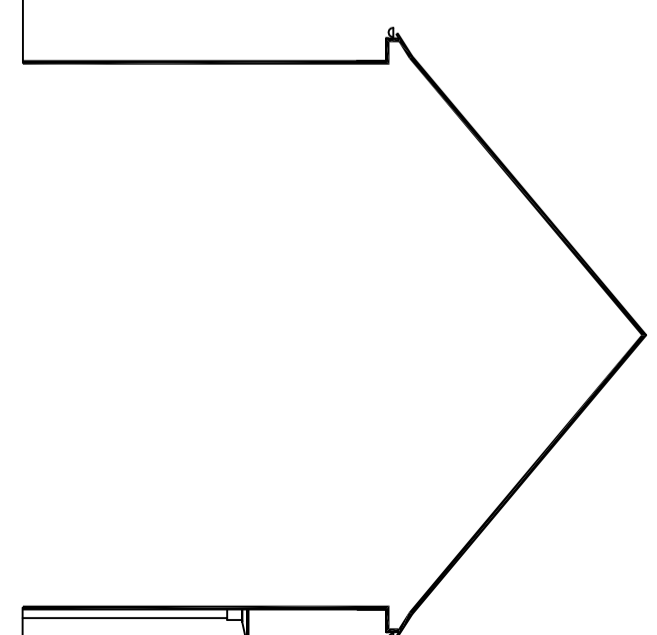
FRONT ELEVATION



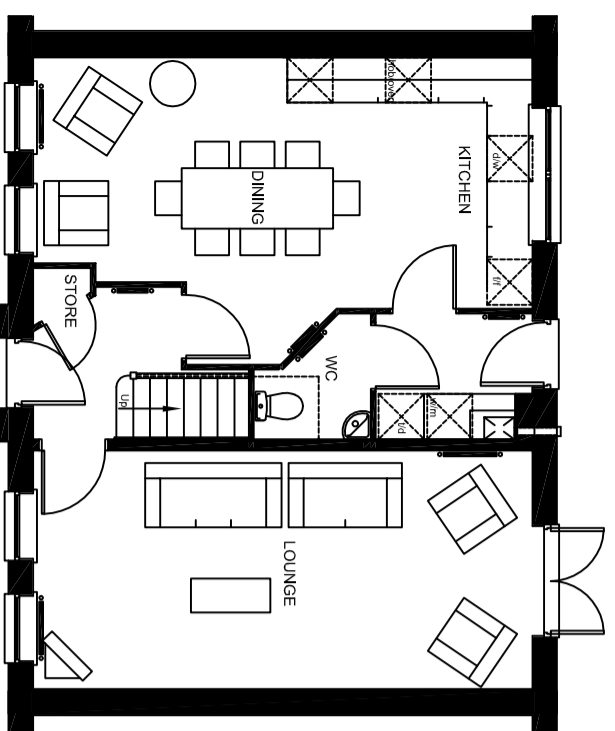
SECTION/SIDE ELEVATION



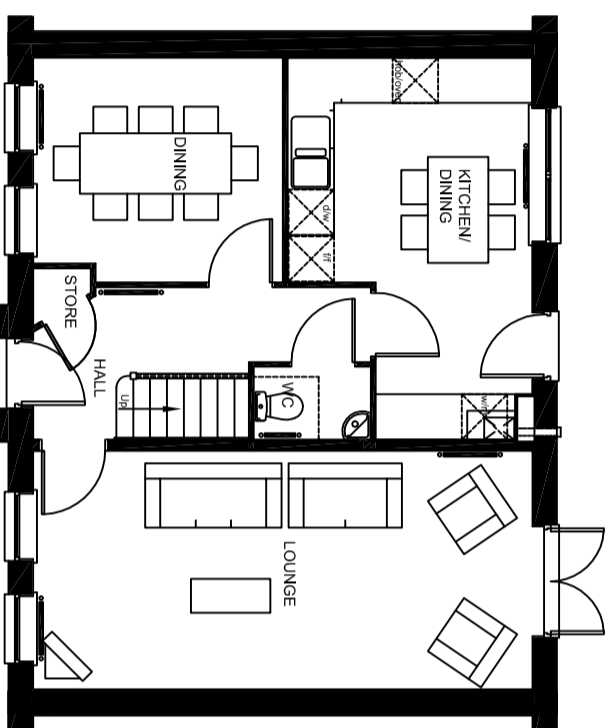
REAR ELEVATION



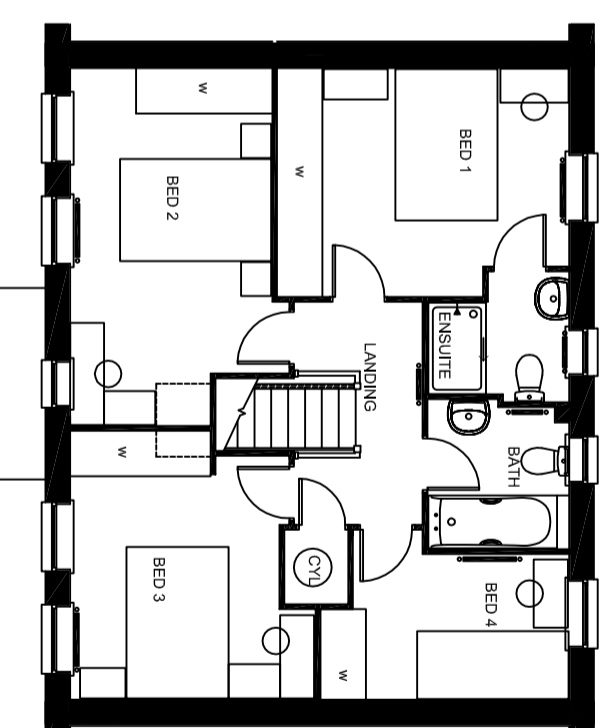
SECTION/SIDE ELEVATION



GROUND FLOOR PLAN



GROUND FLOOR PLAN (ALTERNATIVE LAYOUT)



FIRST FLOOR PLAN

EMBASSY RANGE
FLOOR AREA - 1203sqft/111.7m²

Group Design & Technical Department

BARRATT DEVELOPMENTS PLC
 City West Business Park
 Scotswood Road
 NEWCASTLE UPON TYNE
 NE4 7DF
 Tel: 0191 298 6100
 Fax:0191 256 8324

House Type Code

BTR5 00CI (TERRACE-OPEN)
BTR5 00SI (TERRACE)

2010 Range-The Thornbury(MID)

PLANNING DRAWING - CLASSIC

WARNING TO HOUSE-PURCHASERS.
 Buyers are warned that this is a working drawing and the contents of this drawing may be subject to change during the progress of the build process. The layout, form, content and dimensions specified are included for general guidance only. The finishes or features shown may alter in respect of individual properties. Whilst we make every effort to ensure our drawings are up to date there may from time to time be an unavoidable delay in updating these due to changes in regulations and/or re-planning. Purchasers are advised to check with the Sales Adviser whether any alterations have been made to this drawing. The contents of this drawing do not constitute a contract, part of any contract or warranty unless specifically incorporated into the contract. They should not be relied upon for the purposes of entering into a contract to purchase any property.

Date	FEB 2011	2010/THO/C/02
Drawn by	GDT	EMBASSY RANGE
Checked by	GDT	
Revision	G	Scale 1 : 100 @ A3