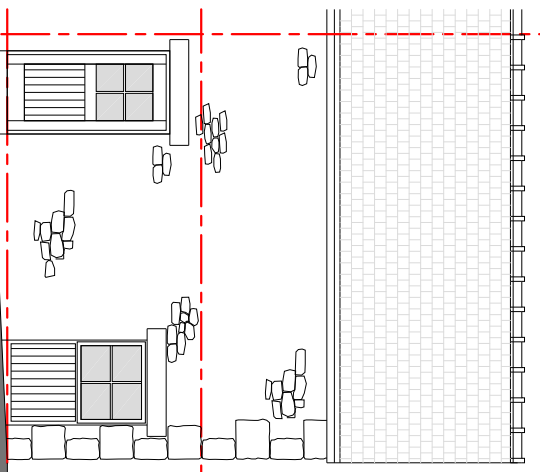
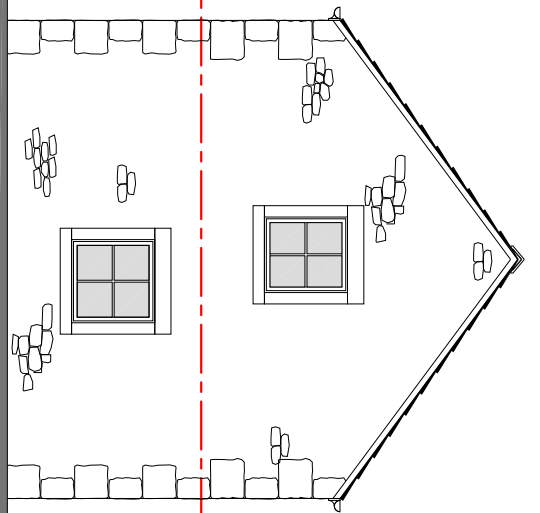


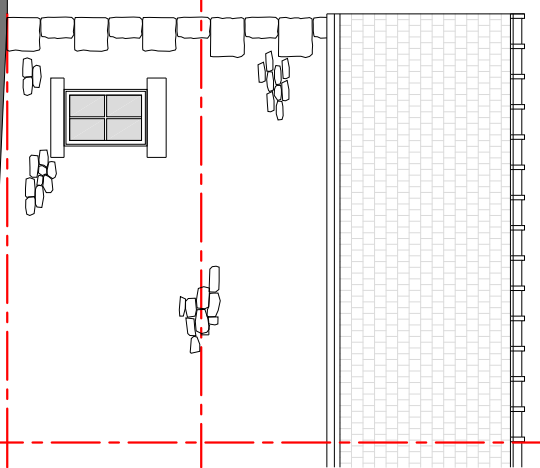
Attached other Unit not shown



West (front)



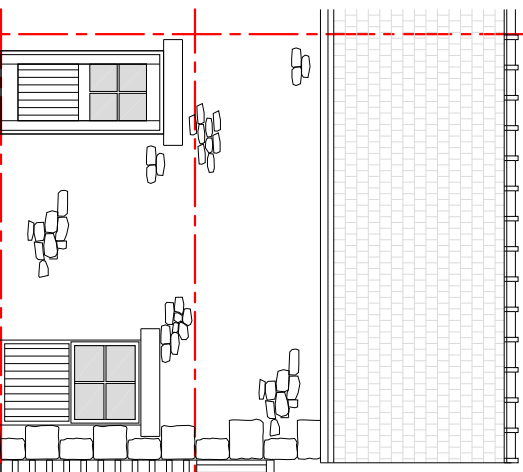
North (end)



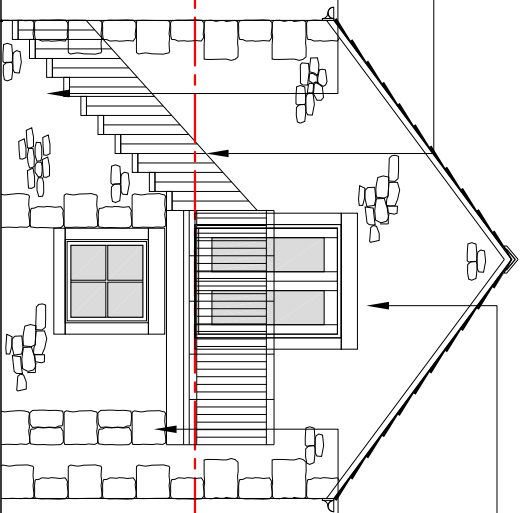
East (rear)

Elevations as Approved
Planning Approval:
3/2011/0702

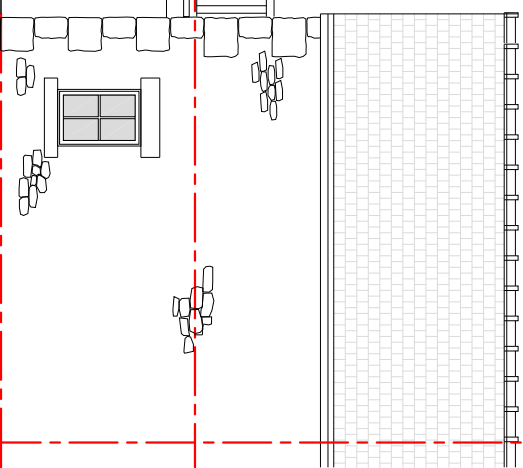
Attached other Unit not shown



West (front)

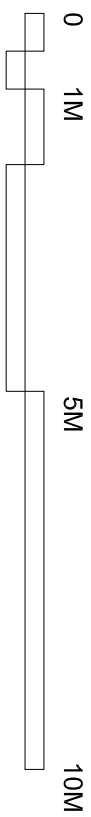


North (end)



East (rear)

Elevations as Proposed



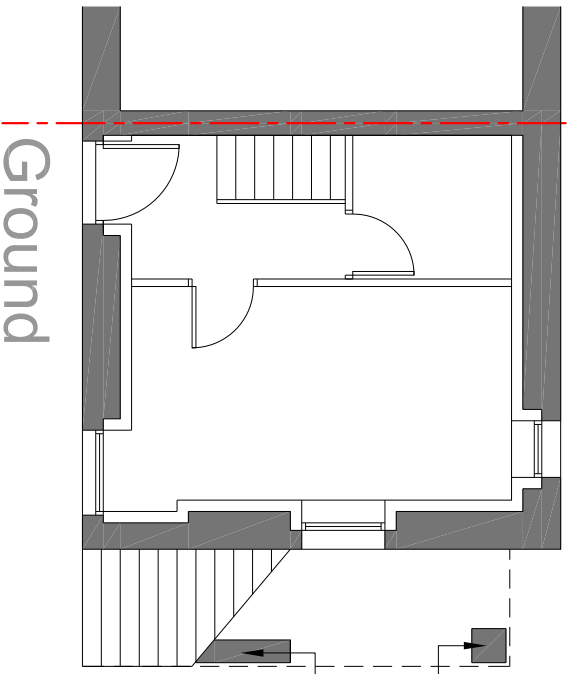
approx 2,500
approx 3,600

Stone wall with stone
flagged steps and landing

M/S handrails & balusters
secured to stonework

Enlarge extg opening to
form double door opening
with stone heads, cills +
jambs

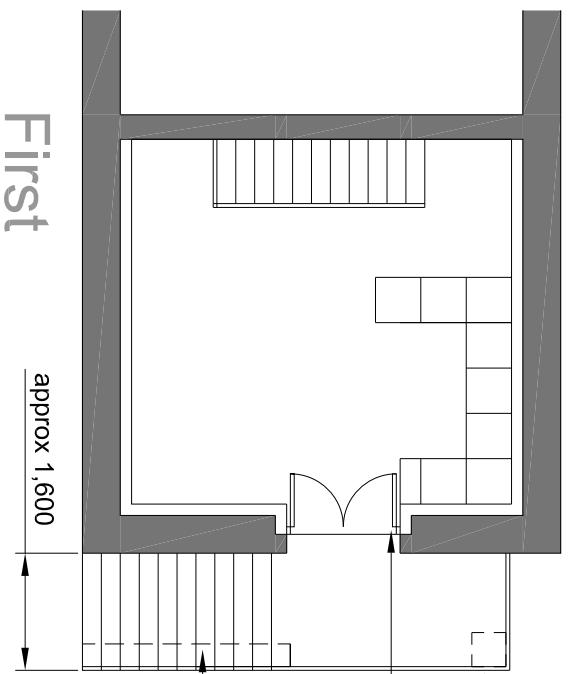
Isolated stone pier at
corner with void under
landing



Ground

Isolated stone pier at
corner with void under
landing

Stone wall with stone
flagged steps and landing



First

approx 1,600

M/S handrails & balusters
secured to stonework

Enlarge extg opening to
form double door opening
with stone heads, cills +
jambs

Stone wall with stone
flagged steps and landing

approx 5,700

PROJECT: Out Building Conversion
Fairclough House
Loud Bridge
Chipping

TITLE: Proposed
External Steps

JOB NO	DWG NO	REV	SCALE	DATE	DRAWN
239	02		1:100 @ A3	03/16	KZ

KARL ZALDATY BATHONS) Dip Arch Dist RIBA
HATHERSAGE BARN MOORSIDE LANE WOODPLUMPTON PRESTON PR4 0TB
t: +44 (0) 1772 691 712 m: +44 (0) 7770 976 548 e: kzarchitect@btinternet.com