

320160412P

PROPOSED
TWO STOREY EXTENSION
AT
AUSTIN HOUSE
MALT KILN LANE
CHIPPING

PHOTOGRAPH SURVEY

- P1 View from Malt Kiln Lane view north onto south west elevation – south east gable of the house over looking boundary hedge obstructing the view of the proposed site.
- P2 Distant view from joint parking area entrance drive view south east of house gable – evergreen shrubbery and garage obstructing view of the opposed site
- P3 Close up view of south east gable of house and garage with gap that could view the extension. The view is 25.0m west of the public footpath on private land.
- P4 View from the stile and commencement of public footpath (F.P.1) showing the south east gable of the house and garage obstructing the proposed extension site
- P5 View 40,0m north from the start of (F.P.1) over the garage and roof tops of the house
- P6 View from the crown of the hillside and (F.P.1) showing Austin House in the distance
- P7 View from (P.F.1) with both Austin House and the mill pond shown in the distance
- P8 View from the start of (F.P.1) view north up the hillside
- P9 Principle view of the mill pond from (F.P.1) at approximately 90 to Austin House
- P10 Principle westerly view of the mill pond from (F.P.1) at approximately 90 Austin House.

SUMMARY

The principle views whilst descending the hillside is the mill pond with Austin House to the west forming an incidental view.



P. 1.



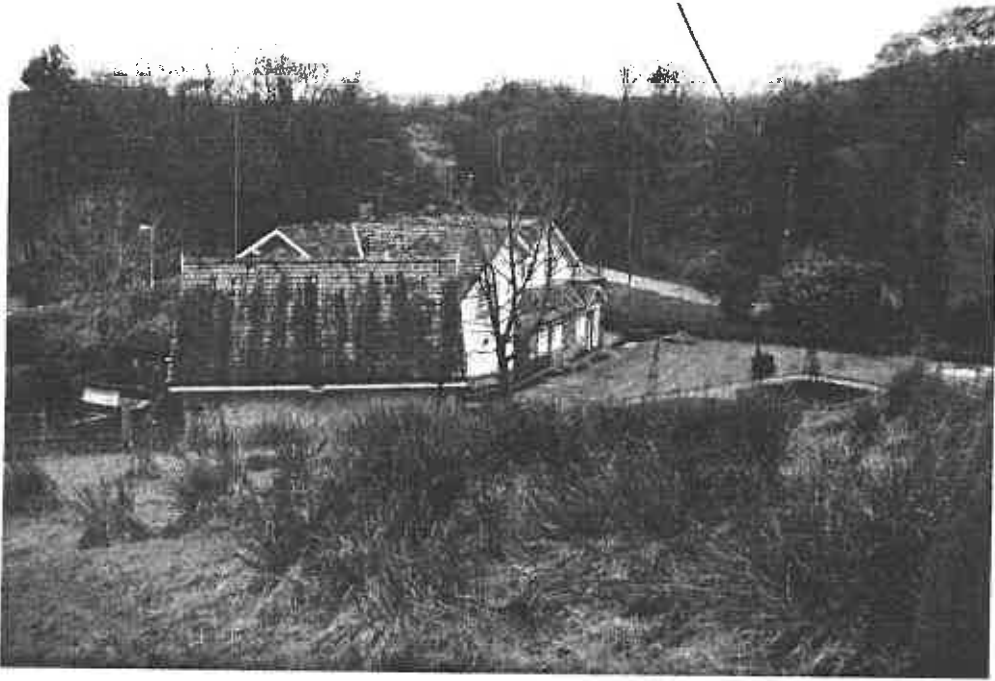
P. 2.



P. 3.



P. 4.



P. 5.



P. 6.



P. 7.



P. 8.



P. 9.



P 10.