

320160580P



Site Context Photo No. 1 (View looking west towards the garden centre, across the car park. Assessment Site located behind trees to the right of image)



Site Context Photo No. 2 (View looking north west towards the assessment Site, across the garden centre car park. Assessment Site is located behind trees in centre and right of image)



Site Context Photo No. 3 (View looking north west from within existing nursery, towards garden centre buildings)



Site Context Photo No. 4 (View looking south from near entrance to existing nursery. Assessment Site located behind photographer)

320160580P



Site Context Photo No. 5a (View looking north west towards assessment Site, which is located behind trees)



Site Context Photo No. 5b (View looking north east towards assessment Site, which is located behind trees)



Spout Farm, Longridge, Preston



Site Context Photo No. 6 (View looking east south east towards the northern boundary of the assessment Site, with Alston Reservoir No.2 to left of Image)



Site Context Photo No. 7 (View looking north across the car park towards the assessment Site, from close to the garden centre building and nursery entrance)

320160580P

5. Appendix 5. Viewpoint Photographs

320160580P

Approximate extent of proposed development



Viewpoint No. 1 (View looking north, north west towards the Site from the intersection of Preston Road and Bridleway 119)

Approximate extent of proposed development

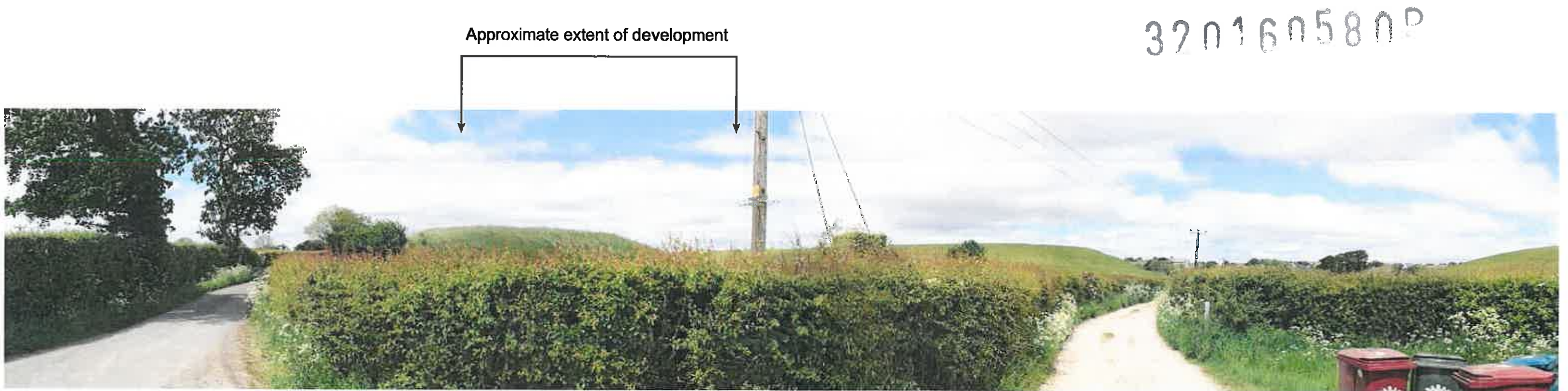


Viewpoint No. 2 (View looking north west towards the site from Bridleway 121, close to southernmost bird hide, as pictured to the right of the photograph)





Viewpoint No. 3 (View looking north west towards the Site from Footpath 118)



Viewpoint No. 4 (Viewpoint looking east towards the Site from the intersection of Bridleways 121, 58 and 59)

5. Appendix 5. Viewpoint Photographs

320160580P



Site Context Photo No. 1 (View looking west towards the garden centre, across the car park. Assessment Site located behind trees to the right of image)

320160580P



Site Context Photo No. 2 (View looking north west towards the assessment Site, across the garden centre car park. Assessment Site is located behind trees in centre and right of image)



Site Context Photo No. 3 (View looking north west from within existing nursery, towards garden centre buildings)

320160580P



Site Context Photo No. 4 (View looking south from near entrance to existing nursery. Assessment Site located behind photographer)



Site Context Photo No. 5a (View looking north west towards assessment Site, which is located behind trees)



Site Context Photo No. 5b (View looking north east towards assessment Site, which is located behind trees)

320160580P



Site Context Photo No. 6 (View looking east south east towards the northern boundary of the assessment Site, with Alston Reservoir No.2 to left of image)



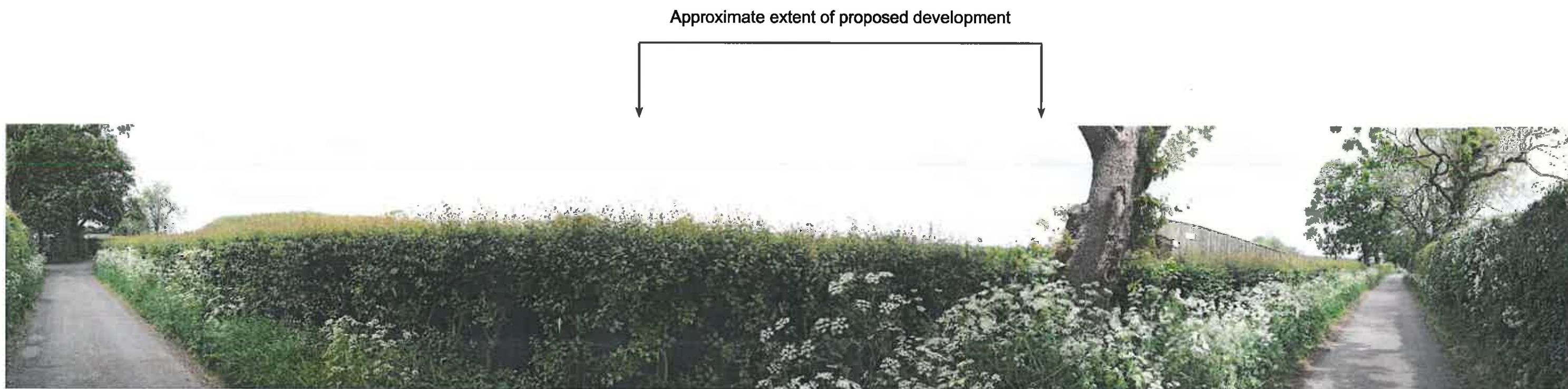
Site Context Photo No. 7 (View looking north across the car park towards the assessment Site, from close to the garden centre building and nursery entrance)



Spout Farm, Longridge, Preston



Viewpoint No. 1 (View looking north, north west towards the Site from the intersection of Preston Road and Bridleway 119)



Viewpoint No. 2 (View looking north west towards the site from Bridleway 121, close to southernmost bird hide, as pictured to the right of the photograph)

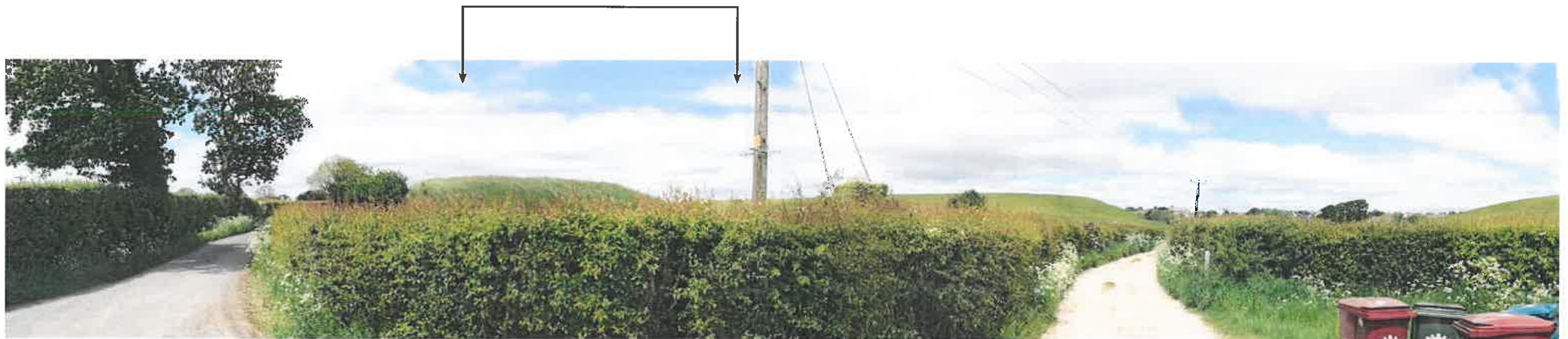
320160580P

Approximate extent of proposed development



Viewpoint No. 3 (View looking north west towards the Site from Footpath 118)

Approximate extent of development



Viewpoint No. 4 (Viewpoint looking east towards the Site from the intersection of Bridleways 121, 58 and 59)



320160580P

4. Appendix 4 – Site Context Photographs

Spout Farm, Longridge LVA

June 2016