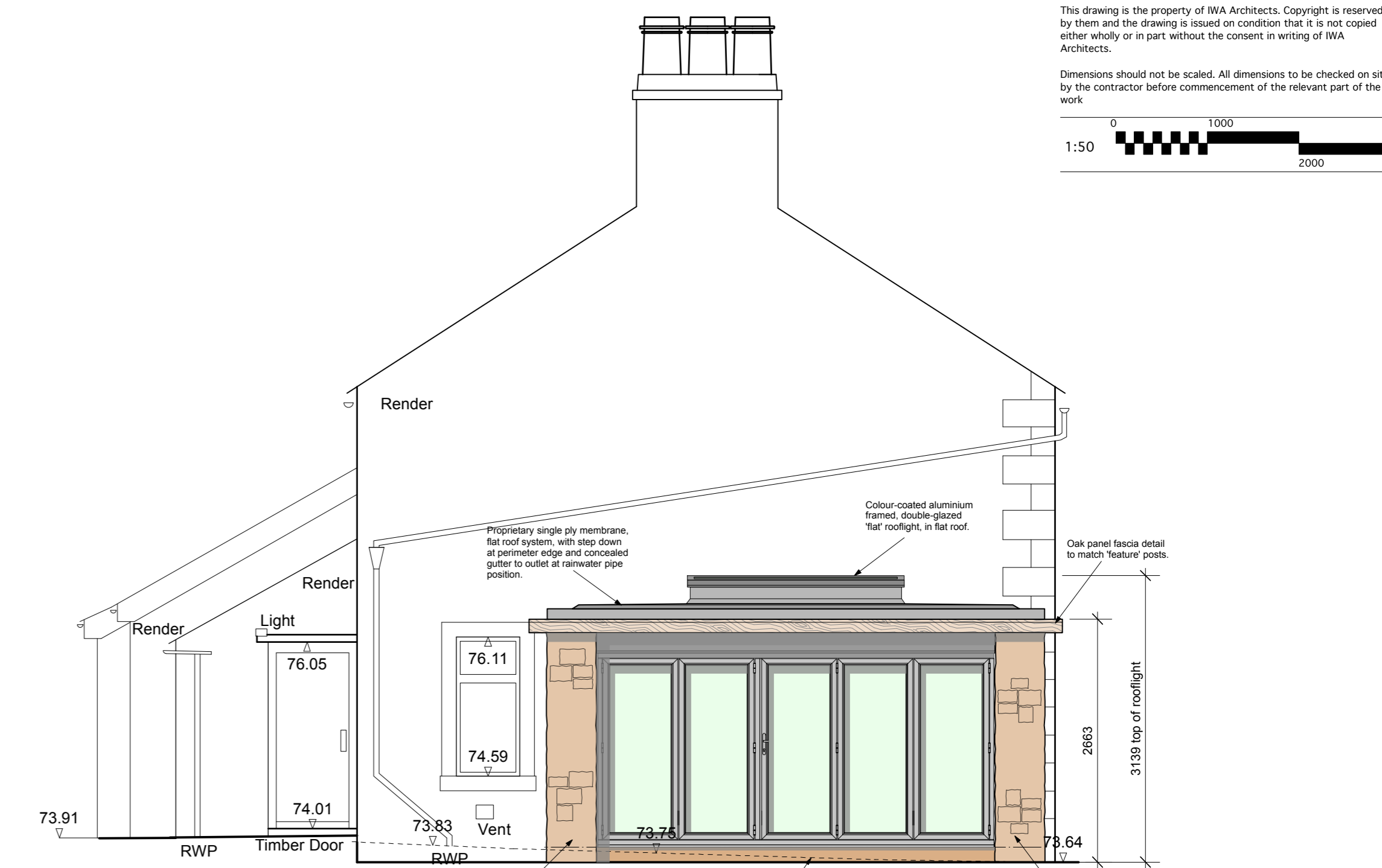


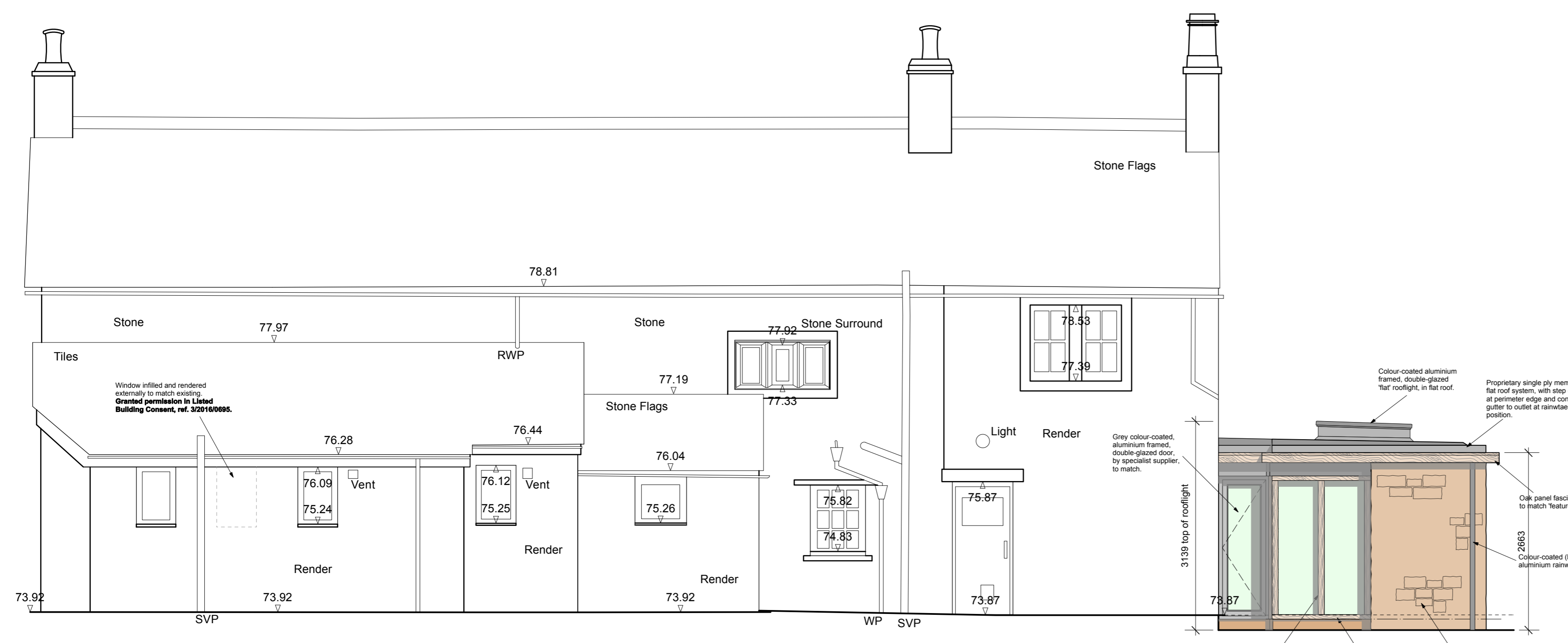
▼ 72.00m above OS Datum

South East Elevation



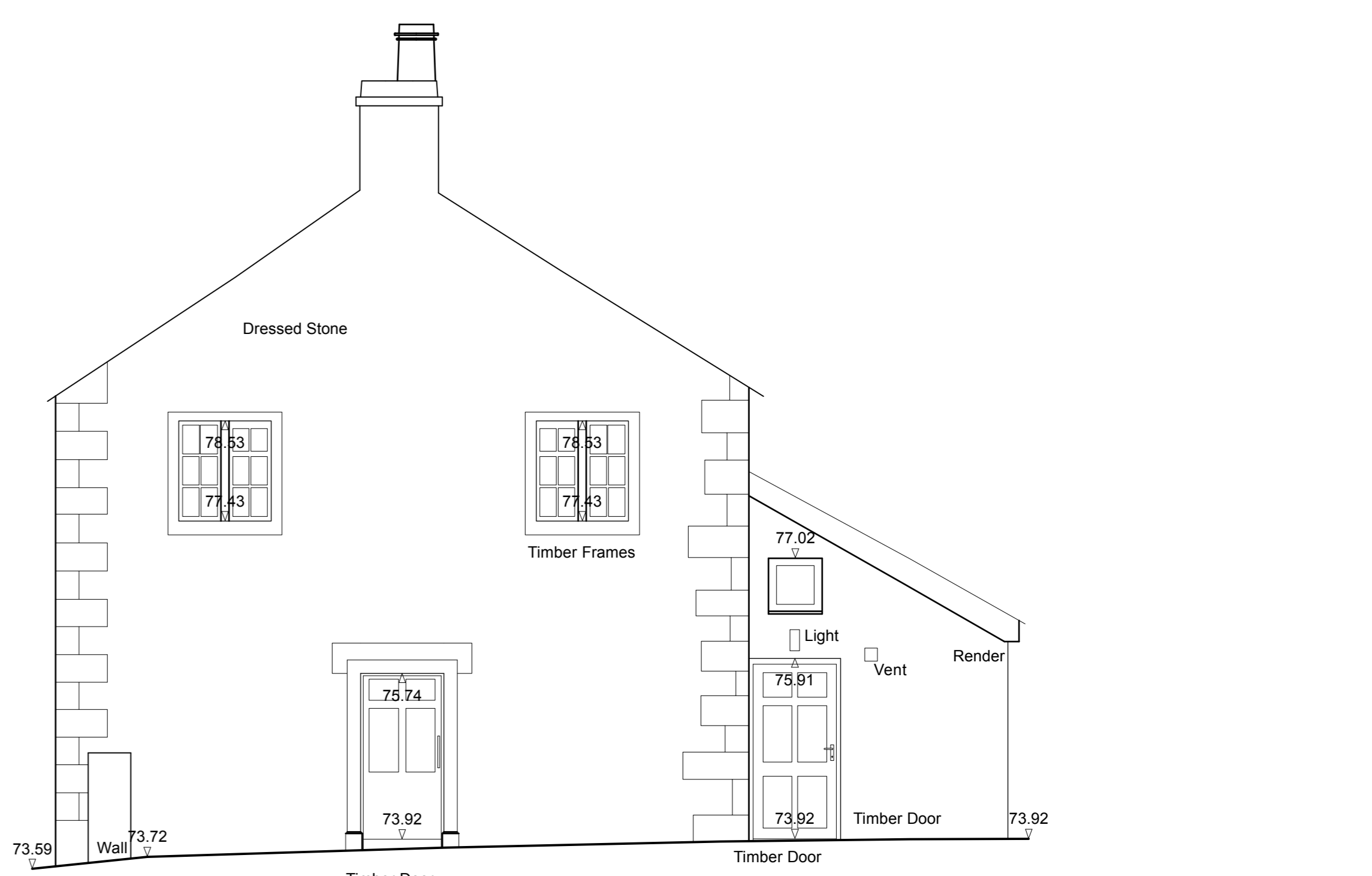
▼ 72.00m above OS Datum

South West Elevation



▼ 72.00m above OS Datum

North West Elevation



▼ 72.00m above OS Datum

North East Elevation

Rev	Date	Description
B	27.09.2016	Additional notes and dimensions indicated for Planning Application purposes.
A	22.09.2016	Amended in accordance with Pre-Application comments, regarding setting the extension back to avoid the existing stone quoins and omitting the lantern rooflight. Contemporary 'flat' rooflight indicated instead.

Friends Meeting House
Grindleton Road, Sawley

Proposed Elevations -
Planning Application

Drwg. No.: 2246.P.03 Rev.: B

Date: Jun '16 Scale: 1:50@A1

IWA Architects

Waterloo Mill, Waterloo Road, Clitheroe, Lancashire, BB7 1LR
t: +44 (0) 1200 423487
f: +44 (0) 1200 456278
e: admin@iwaarchitects.co.uk
w: www.iwaarchitects.co.uk

Construction Materials Legend.

Walls - Masonry cavity walls, with natural random rubble stone outer face.

Roof - Dark grey, single-ply membrane, insulated 'warm' flat roof.

Windows / doors - Colour coated (grey), thermally broken, aluminium frames, with double-glazed units fitted. Double-glazed, full height units, direct glazed into rebates of oak outer frame. Sliding folding, thermally broken, aluminium frames, with double-glazed doors. Aluminium framed, double-glazed 'flat' rooflight on flat roof.

Rainwater Goods - Colour coated aluminium profile gutters and round section downpipes, in black.

External Hard Surfaces - Stone flag paving to perimeter paths.