

**UPDATED HOUSE TYPE DRAWINGS SHOWING BAT,
SPARROW AND SWIFT BOXES/ TUBES AND TERRACES
POSITIONS FOR THE PROPOSED ERECTION OF 10
DWELLINGS ON LAND OFF CHATBURN OLD ROAD
CHATBURN, NR CLITHEROE**

FOR JJ CONSTRUCTION (NW) LTD

**(To be read in conjunction with Envirotech Ecological
Consultants' letter of 9th March 2016 and accompanying details
previously approved by RVBC)**

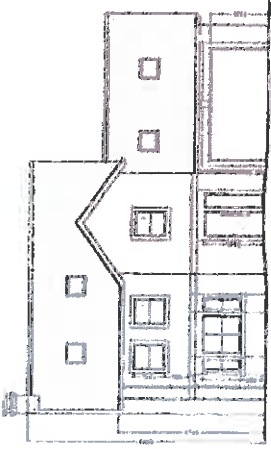
REF. 5138

DATE: 03.08.2016

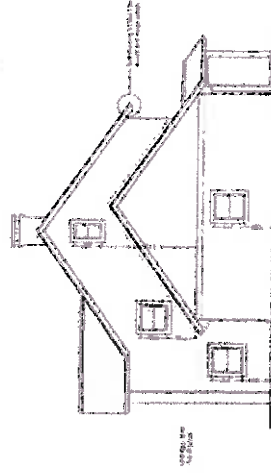
1. All dimensions given to face of structural members unless otherwise indicated.

2. All dimensions given to face of structural members unless otherwise indicated.

3. All dimensions given to face of structural members unless otherwise indicated.



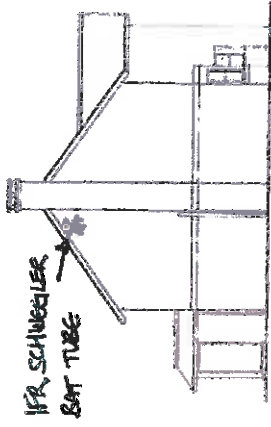
South West (Front) Elevation



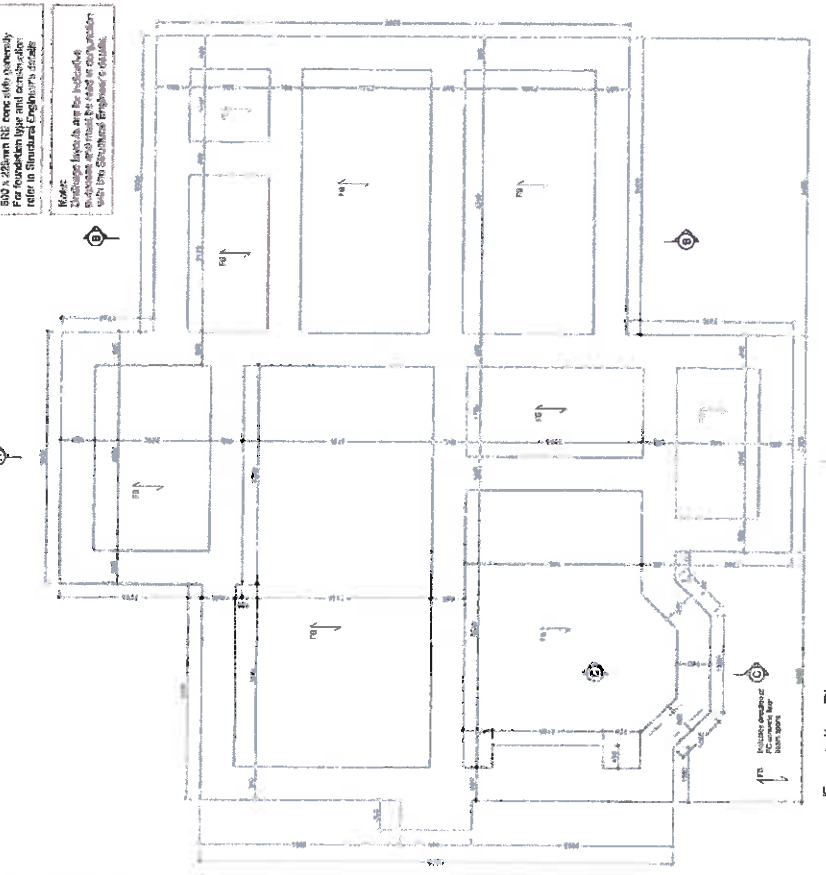
South East Elevation



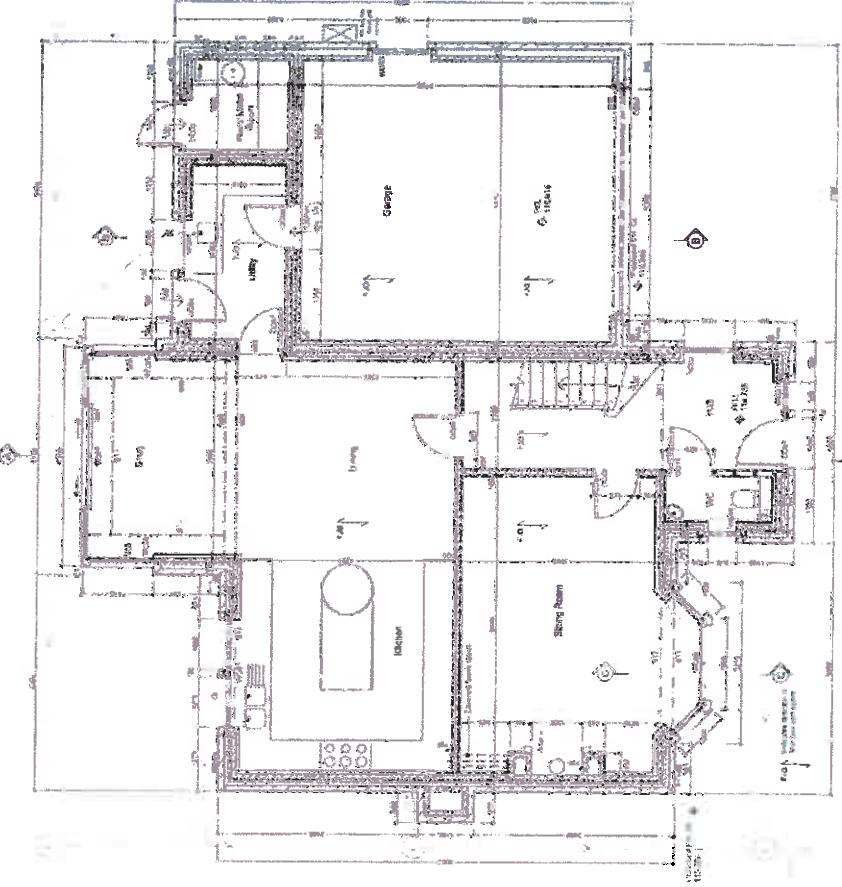
North East (Rear) Elevation



North West Elevation



Foundation Plan
(Subject to Structural Engineer's details)



Ground Floor Plan



REVISIONS:

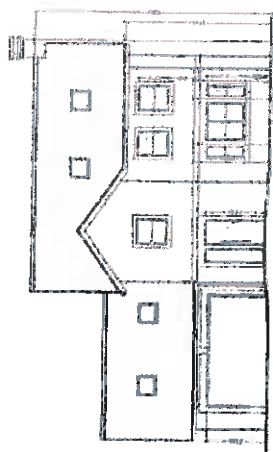
- Rev A - Structural requirements 14.07.18 - RB
- Rev B - Utility dimensions updated 20.09.18 - RB
- Rev C - Foundation updated to suit SSI details 10.10.18 - RB
- Rev D - Foundation updated to suit SSI details 10.10.18 - RB
- Rev E - Foundation updated to suit SSI details 10.10.18 - RB

5138 10

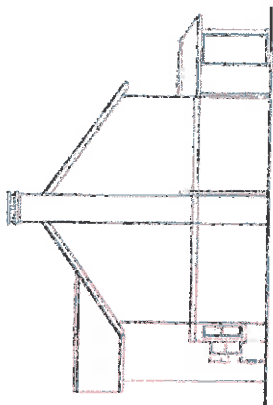
5138 10

PROFESSIONAL SEAL
NO. 123456789
STATE OF CALIFORNIA
REGISTERED ELECTRICAL ENGINEER
EXPIRES 12/31/2019

3x 17A SCHWEGLER SWIFT NEST BOXES



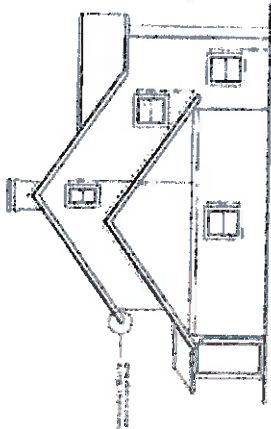
South West (Front) Elevation



South East Elevation



North East (Rear) Elevation



North West Elevation



All dimensions given to face of sheetrock/finish.

Materials:
Roof: Asph/Flt
Siding: White vinyl
Paint: White
Windows: White vinyl
Doors: White vinyl
Flooring: Carpet
Stairs: Carpet
Cabinets: White
Countertops: Granite

REVISIONS:
Rev 1: Update floor plan to show garage
Rev 2: Update floor plan to show stairs
Rev 3: Update floor plan to show porch

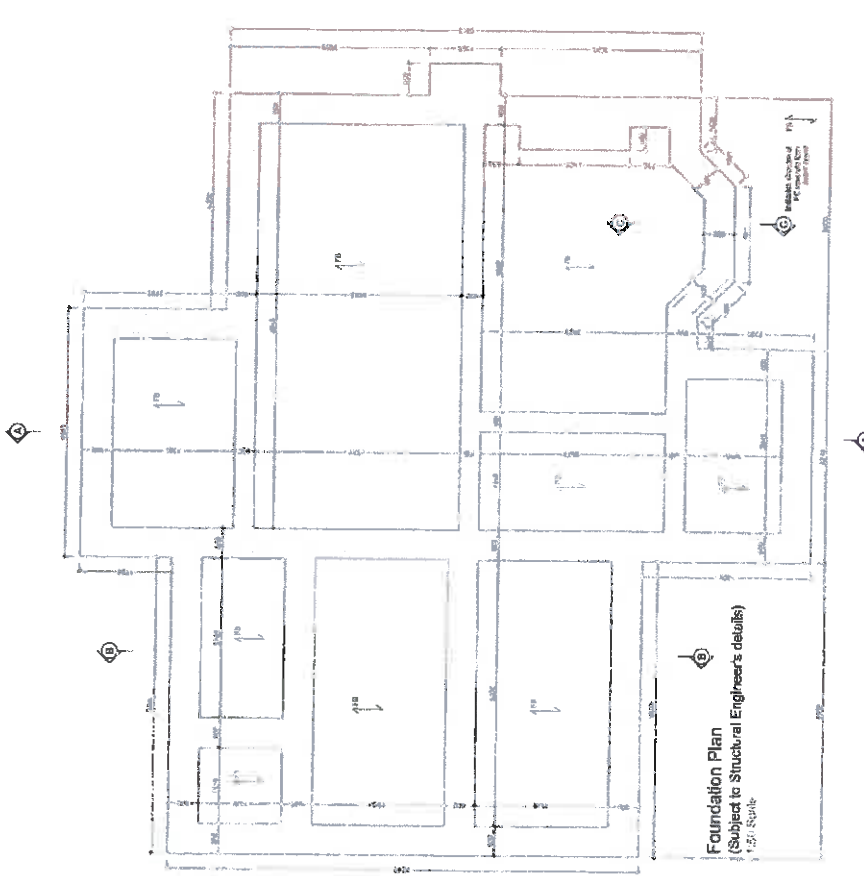
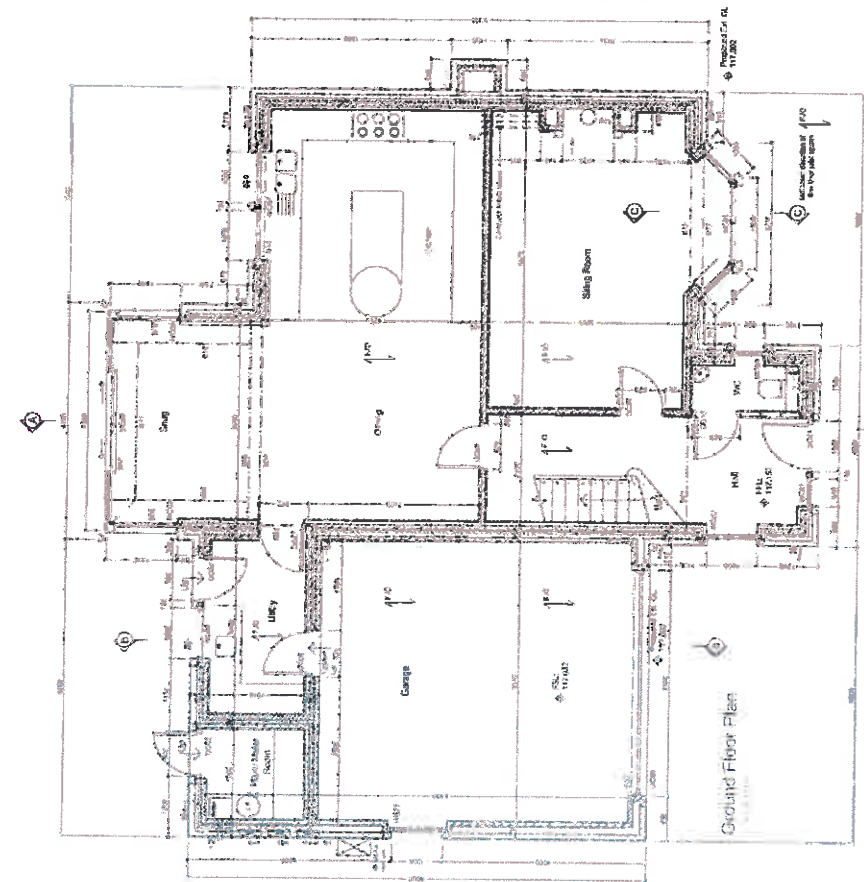
J.J. Construction Ltd.

Project: Erection of 10 homes on lots off
Chilham Old Road
Chilham

3x 17A SCHWEGLER SWIFT NEST BOXES

5138 - 12

Rev B



Foundation Plan
(Subject to Structural Engineer's details)
1/2" Scale

1. All dimensions given to face of foundation/structure.



All dimensions given to face of foundation/structure.

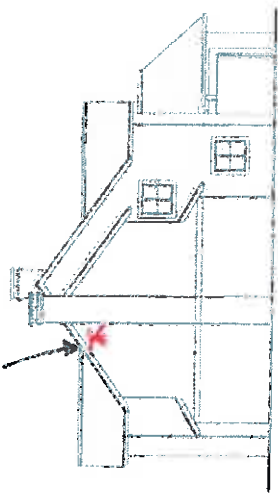
J.J. Construction Ltd.
 Proposed Erection of 10 houses on land off
 Chesham Old Road
 Chesham

NO. 5
 Proposed Ground Floor Plan
 and
 North East Elevation
 and
 South East Elevation
 1:50 Scale
 21/03/2018

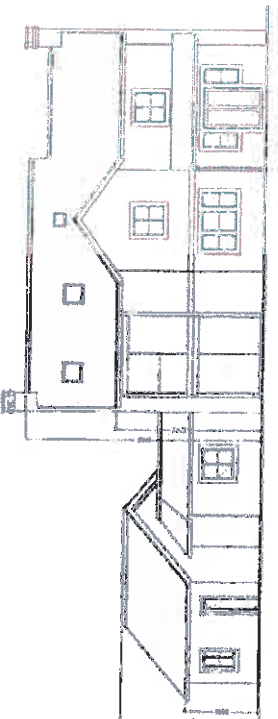


5138 - 31

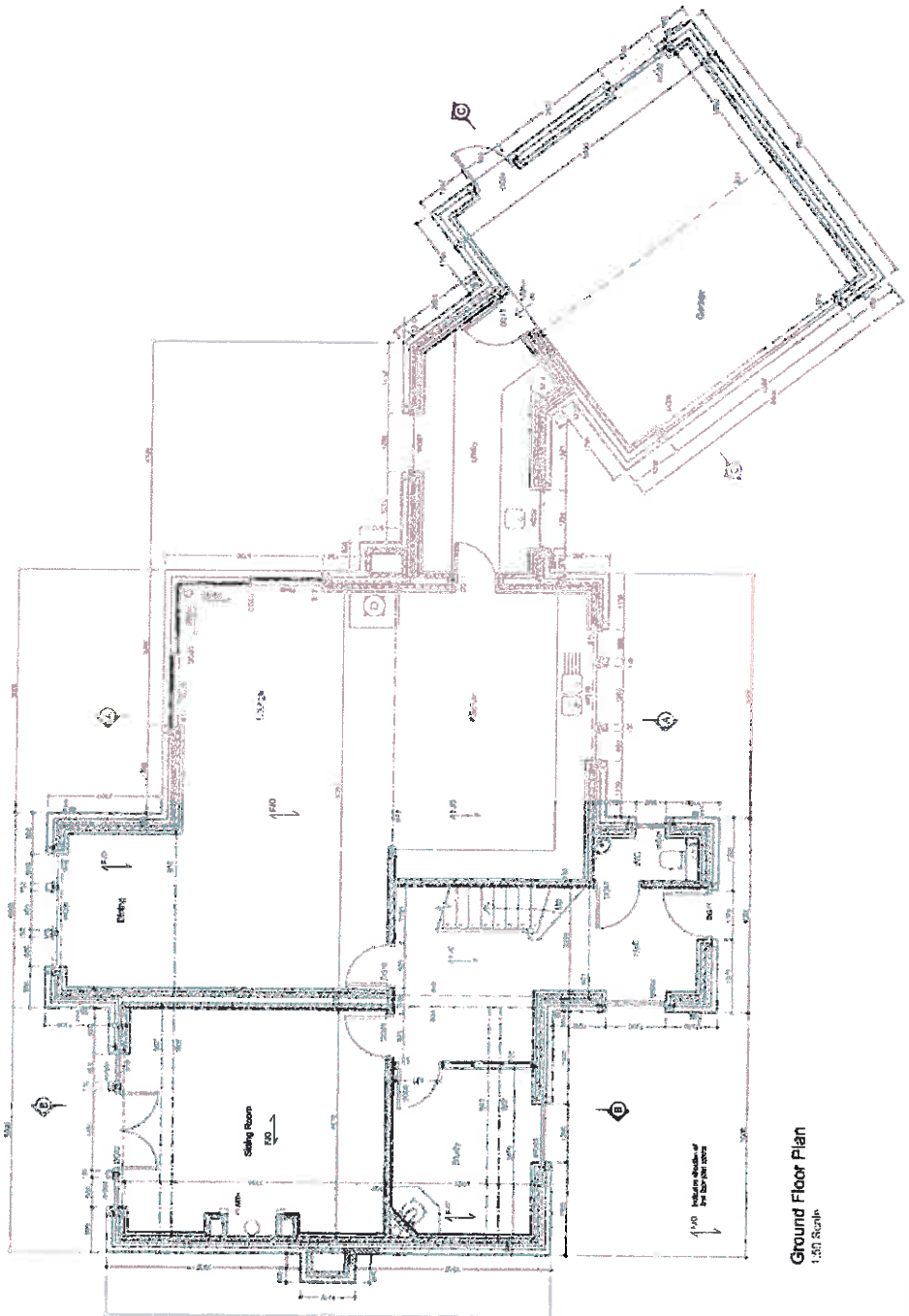
1FR SKANGLES BAR TUBE



North East Elevation

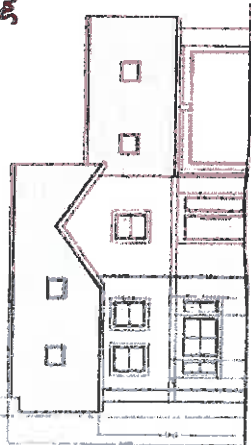


South East (Rear) Elevation

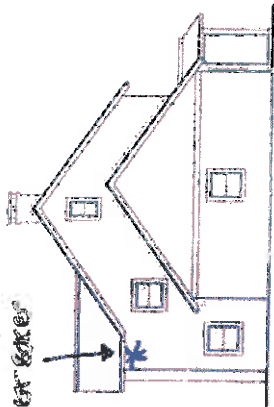


Ground Floor Plan
 1:50 Scale

No. 17A SCAWED LEE
SUBMIT WITH EXTERIOR



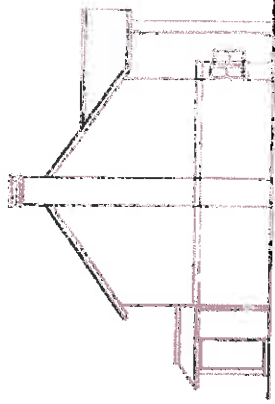
North West (Front) Elevation



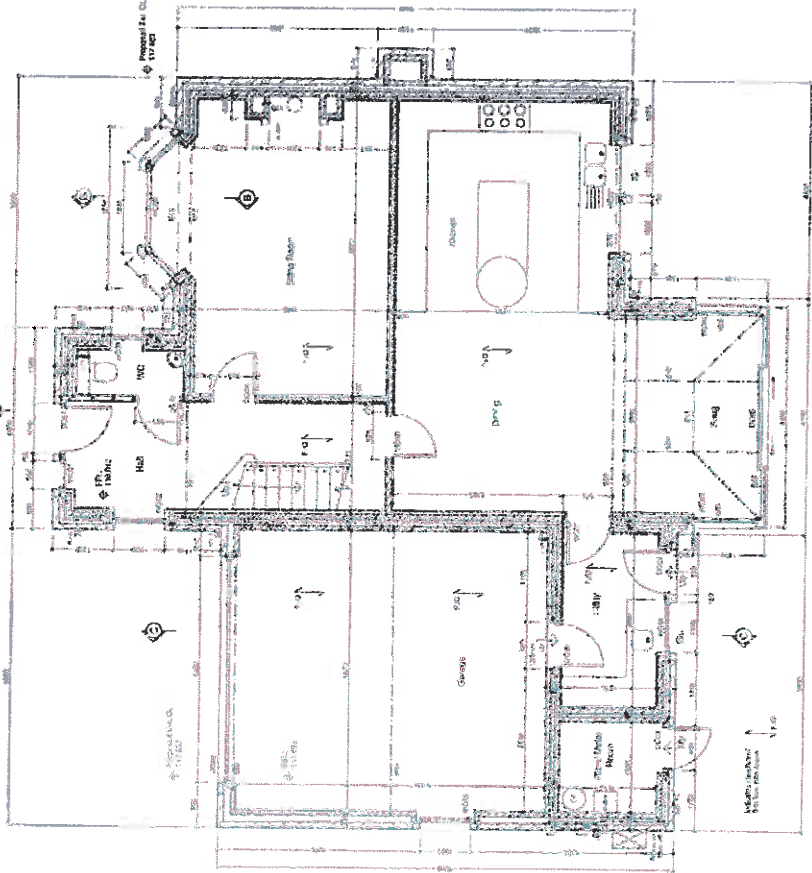
South West Elevation



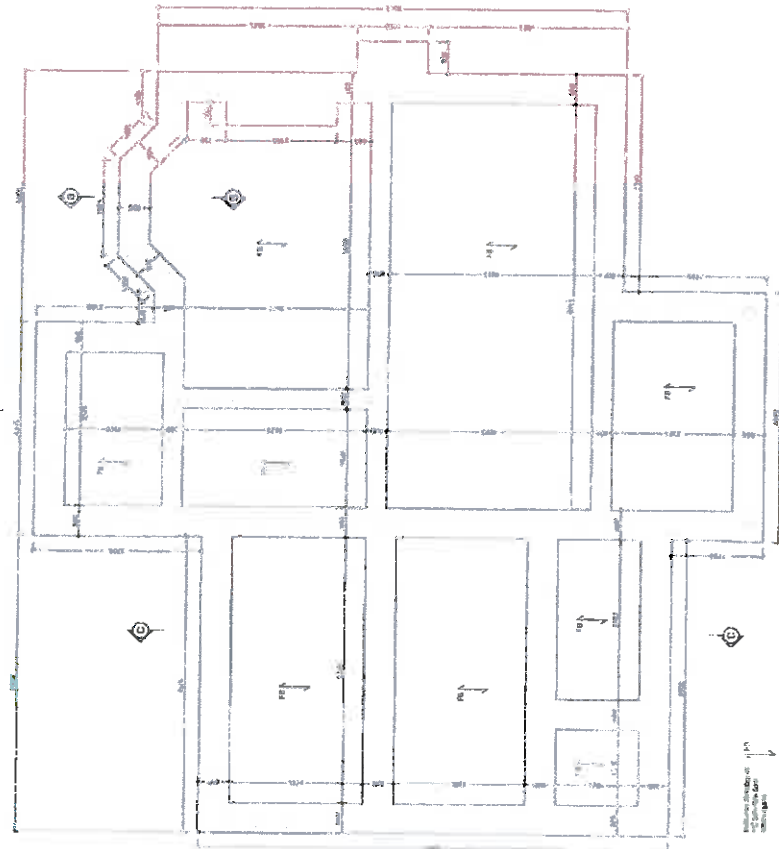
South East (Rear) Elevation



North East Elevation



Ground Floor Plan



Foundation Plan
(Subject to Structural Engineer's details)

All dimensions given to face of stone/brick/studwork

Materials

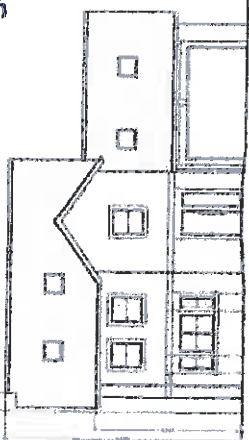
- Roof:**
 - Walled gable ends and level of ridge
 - as specified
 - as specified wherever otherwise given in
 - to be made good
 - to be made good wherever otherwise given in
 - to be made good wherever otherwise given in
- Walls:**
 - Walls to be made good wherever otherwise given in
 - and string course
 - to be made good wherever otherwise given in
 - to be made good wherever otherwise given in
- Windows:**
 - to be made good wherever otherwise given in
 - to be made good wherever otherwise given in
- Doors:**
 - to be made good wherever otherwise given in
 - to be made good wherever otherwise given in
- Other:**
 - to be made good wherever otherwise given in
 - to be made good wherever otherwise given in

REVISIONS:

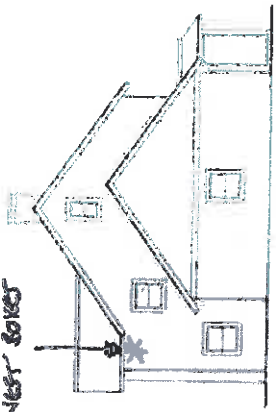
- Rev. 4: Yellow 'step' annotations, 14/07/2016 - MP
- Rev. 3: 2.4. Construction UK
- Rev. 2: Proposed Elevation of 10 houses on base of Chalfont
- Rev. 1: Proposed Elevation of 10 houses on base of Chalfont

Proposed Foundation Plan
No. 17A SCAWED LEE
**SHOWING SWIFT
NOT LINES.**
14/07/2016
14/07/2016

SP
Structural Protection
5138 - 24 A



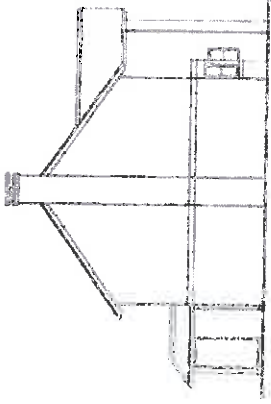
North West (Front) Elevation



South West Elevation

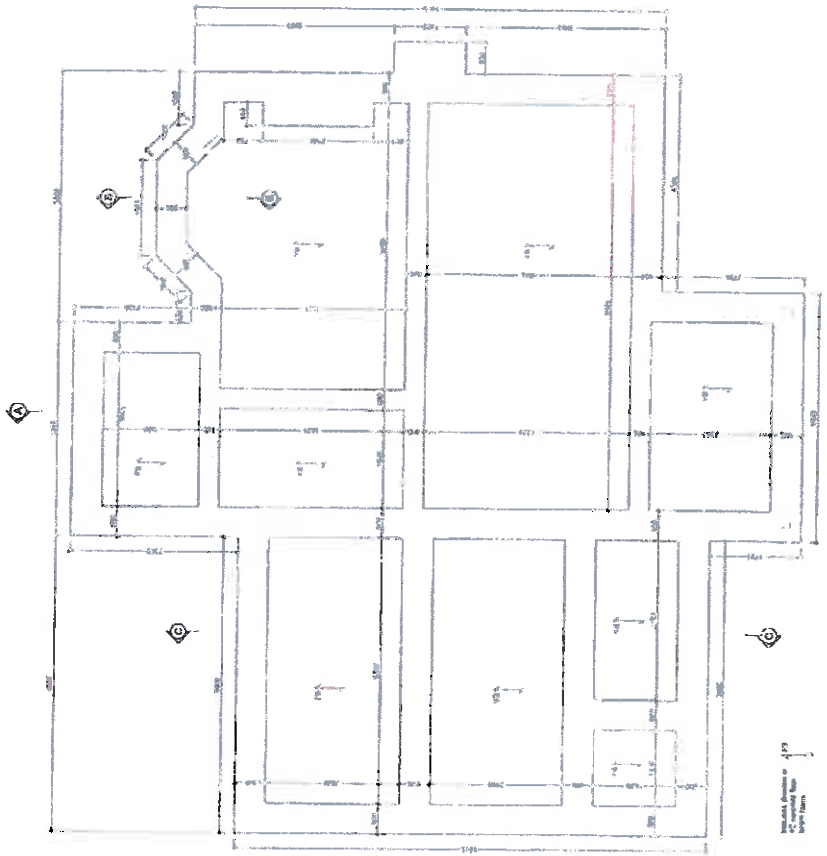


South East (Rear) Elevation

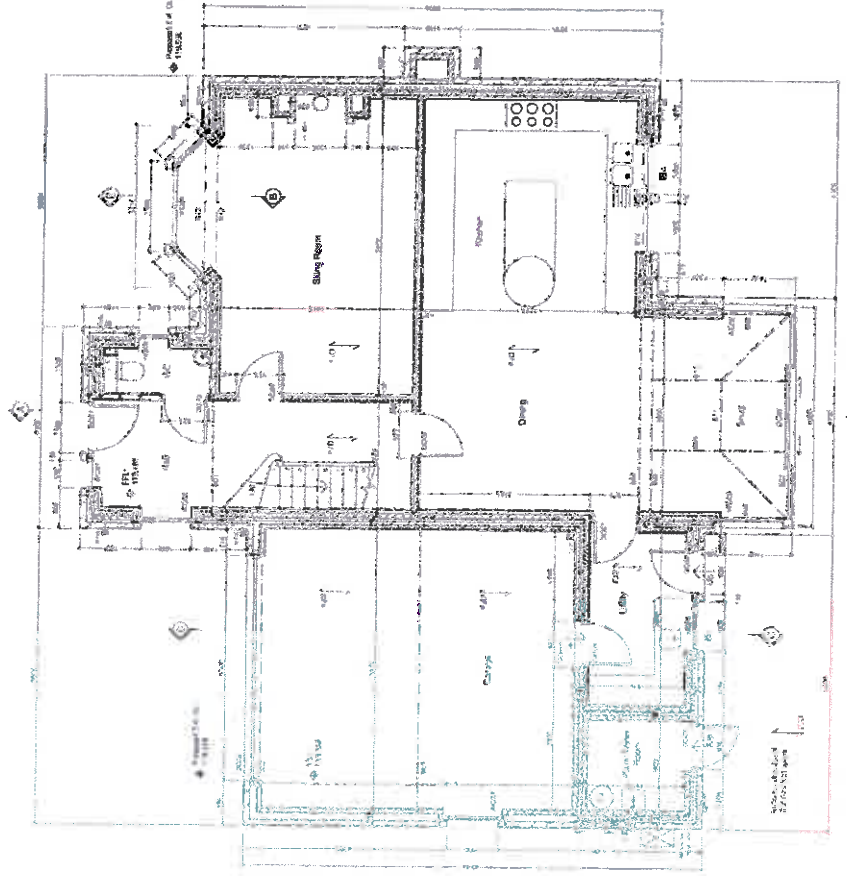


North East Elevation

Mr. FHA SCHUEGLER
SMIPT NEST BOKS



Foundation Plan
(Subject to Structural Engineer's details)



Greatest Floor Plan

All dimensions given to face of structural framework

Materials

Roof
Asph/Flt Shingles over 2x4
Rafters spaced 16" o.c. with
2x12 joists. 1/2" OSB sheathing
over 2x12 joists. 2x12
trusses spaced 4' o.c. with
1/2" OSB sheathing over 2x12
trusses. 2x12 rafters spaced
16" o.c. with 1/2" OSB
sheathing over 2x12 rafters.
2x12 joists spaced 16" o.c.
with 1/2" OSB sheathing over
2x12 joists. 2x12 trusses
spaced 4' o.c. with 1/2" OSB
sheathing over 2x12 trusses.
2x12 rafters spaced 16" o.c.
with 1/2" OSB sheathing over
2x12 rafters. 2x12 joists
spaced 16" o.c. with 1/2" OSB
sheathing over 2x12 joists.

REMARKS:

1. All dimensions given to face of structural framework.
2. All work to be done in accordance with the drawings.
3. All work to be done in accordance with the specifications.
4. All work to be done in accordance with the code of practice.
5. All work to be done in accordance with the code of ethics.
6. All work to be done in accordance with the code of conduct.

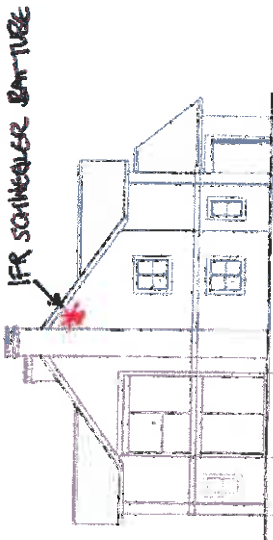
5138 - 26
A
SPT
SMIPT NEST BOKS
P.O. Box 1000
Columbus, MS 39210
Tel: 662-872-4444
Fax: 662-872-4445
www.spt.com

Foundation Plan
(Subject to Structural Engineer's details)

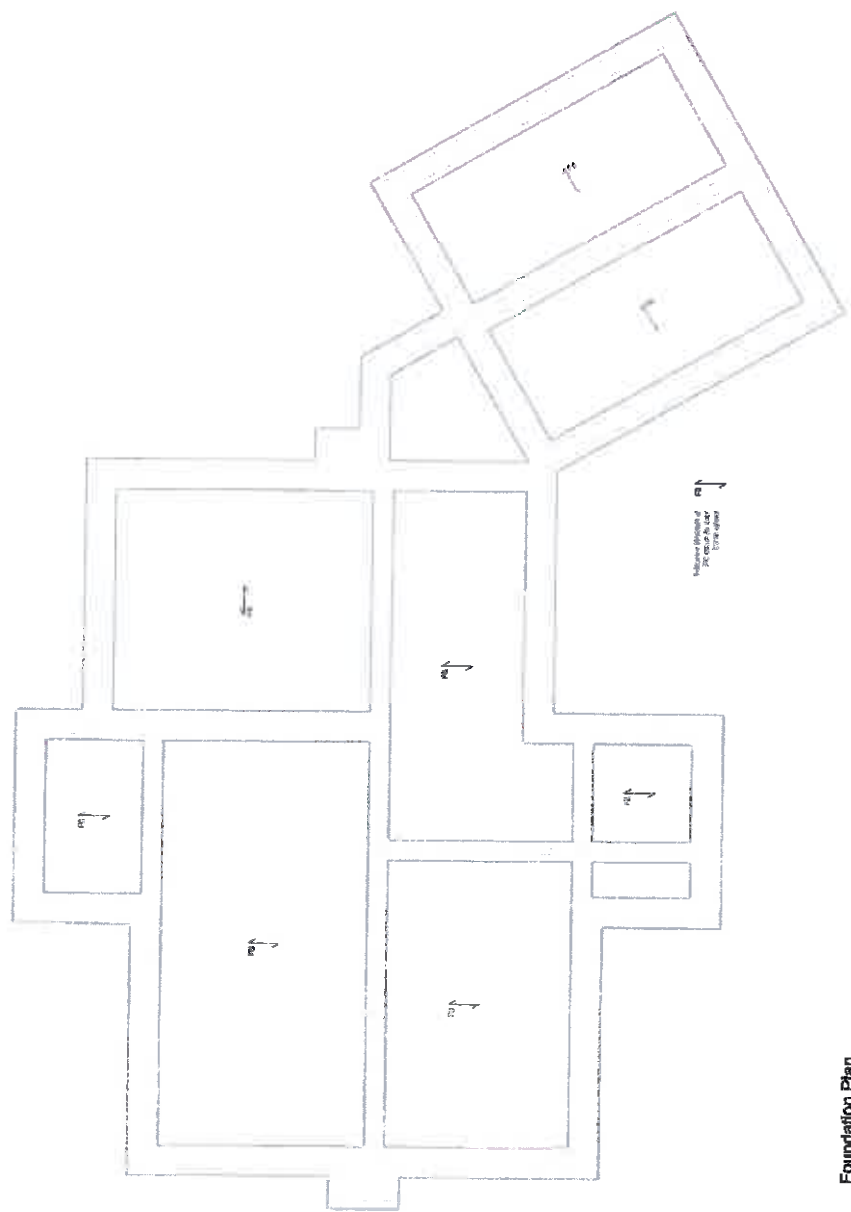
5138 - 26
A



South East (Front) Elevation



South West Elevation



Foundation Plan
(Subject to Structural Engineer's details)
1/8" Scale



All dimensions given to face of stone/blockwork.

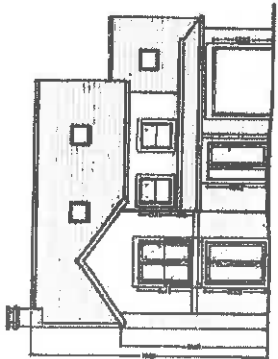
- Materials**
- Roof: Natural blue slate and lead flat where applicable
 - Windows: Timber casement windows painted to match exterior
 - Exterior: Dark grey stone or concrete
 - Interior: Dark grey stone or concrete
 - Walls: Coursed stone with dressed sill, head and string courses
 - Windowsills: Powder coat (dark grey) finish
 - Doors: Powder finish
 - Stairs: Powder finish
 - Chimney: Brick
 - Chimney: Powder finish

J.J. Condon Ltd

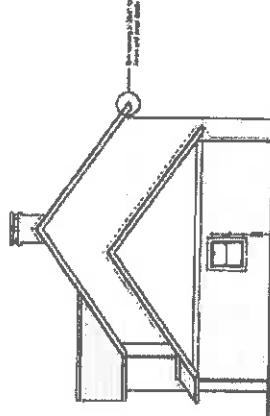
Proposed Erection of 10 houses on land off Chatham Hill Road, Chatham.

Structural Engineering
 100, High Street, Chatham, Kent, ME8 5LQ
 Tel: 01524 850000
 Fax: 01524 850001
 Email: info@sp.co.uk
 Website: www.sp.co.uk

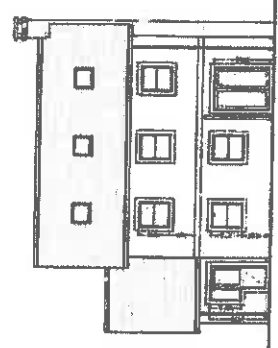
Structural Engineering
 1000 West 10th Street
 Saskatoon, Saskatchewan S7N 3K5
 Tel: (306) 975-1111
 Fax: (306) 975-1112
 Email: info@sp.ca



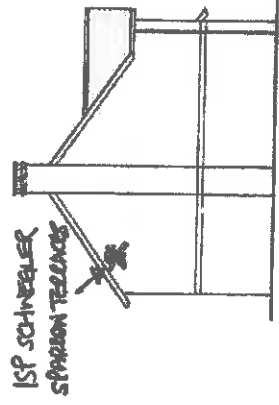
South East (Front) Elevation
 1:100 Scale



North East Elevation
 1:100 Scale



North West (Rear) Elevation
 1:100 Scale



South West Elevation
 1:100 Scale

Foundation resting on soil piers.
 800 x 225mm RE were used generally.
 For foundation type and construction
 refer to Structural Engineer's details.

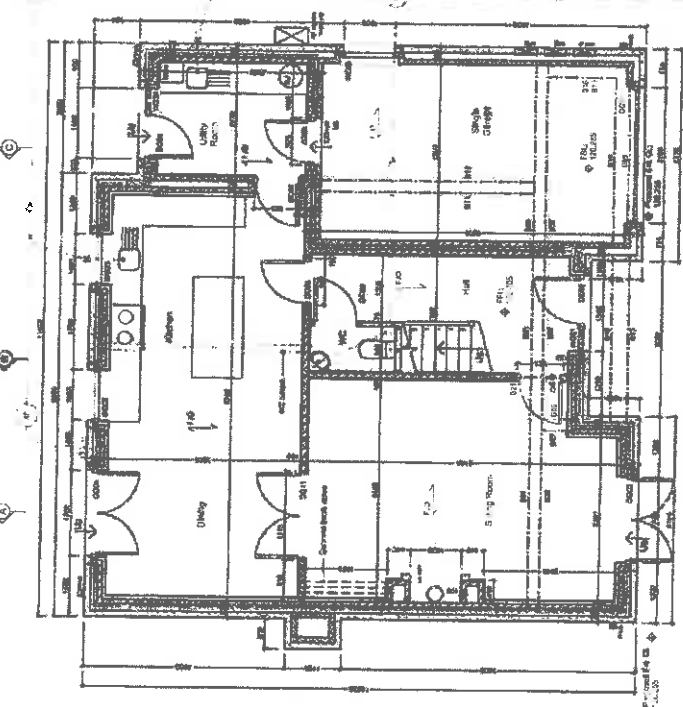
Note:
 Columns are for indicative
 purposes and must be in conformance
 with the Structural Engineer's details.



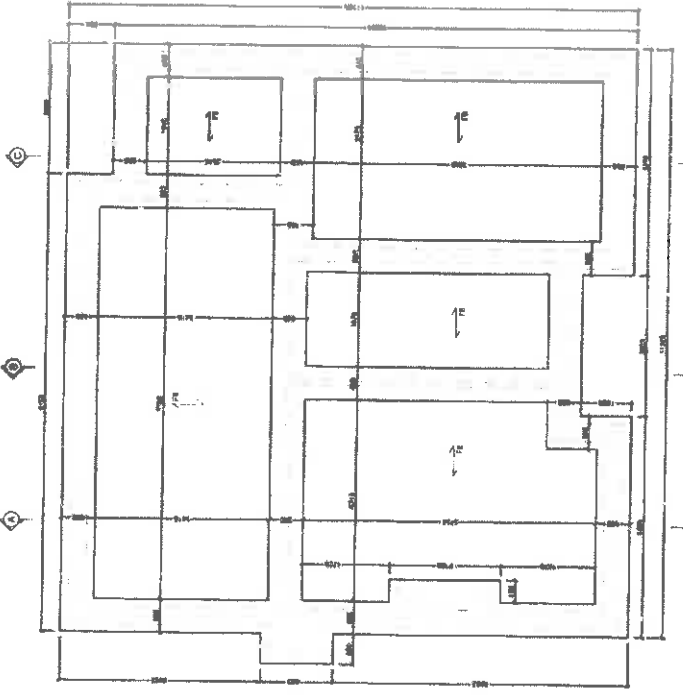
All dimensions given to face
 of structural element.

Materials:
 Roof: Asphalt/Flt shingles and 19mm Gyp Shear
 Siding: Painted aluminum rainwater goods to
 be used.
 Windows: Composite vinyl or frameless glass to
 be used.
 Walls: Large format with 1/2" x 1/2" x 1/2"
 White
 Natural corked spec. 400 frames etc. rears
 and living areas
 Windows: Composite vinyl or frameless glass to
 be used.
 Windows: Composite vinyl or frameless glass to
 be used.
 Down
 Full roof: 1/2" x 1/2" x 1/2"
 Damage: Composite vinyl or frameless glass to
 be used.

REVISIONS:
 Rev 1: 20/07/16 - NE
 Rev 2: 20/07/16 - NE
 Rev 3: 20/07/16 - NE
 Rev 4: 20/07/16 - NE
 Rev 5: 20/07/16 - NE
 Rev 6: 20/07/16 - NE
 Rev 7: 20/07/16 - NE
 Rev 8: 20/07/16 - NE
 Rev 9: 20/07/16 - NE
 Rev 10: 20/07/16 - NE
 Rev 11: 20/07/16 - NE
 Rev 12: 20/07/16 - NE
 Rev 13: 20/07/16 - NE
 Rev 14: 20/07/16 - NE
 Rev 15: 20/07/16 - NE
 Rev 16: 20/07/16 - NE
 Rev 17: 20/07/16 - NE
 Rev 18: 20/07/16 - NE
 Rev 19: 20/07/16 - NE
 Rev 20: 20/07/16 - NE
 Rev 21: 20/07/16 - NE
 Rev 22: 20/07/16 - NE
 Rev 23: 20/07/16 - NE
 Rev 24: 20/07/16 - NE
 Rev 25: 20/07/16 - NE
 Rev 26: 20/07/16 - NE
 Rev 27: 20/07/16 - NE
 Rev 28: 20/07/16 - NE
 Rev 29: 20/07/16 - NE
 Rev 30: 20/07/16 - NE
 Rev 31: 20/07/16 - NE
 Rev 32: 20/07/16 - NE
 Rev 33: 20/07/16 - NE
 Rev 34: 20/07/16 - NE
 Rev 35: 20/07/16 - NE
 Rev 36: 20/07/16 - NE
 Rev 37: 20/07/16 - NE
 Rev 38: 20/07/16 - NE
 Rev 39: 20/07/16 - NE
 Rev 40: 20/07/16 - NE
 Rev 41: 20/07/16 - NE
 Rev 42: 20/07/16 - NE
 Rev 43: 20/07/16 - NE
 Rev 44: 20/07/16 - NE
 Rev 45: 20/07/16 - NE
 Rev 46: 20/07/16 - NE
 Rev 47: 20/07/16 - NE
 Rev 48: 20/07/16 - NE
 Rev 49: 20/07/16 - NE
 Rev 50: 20/07/16 - NE
 Rev 51: 20/07/16 - NE
 Rev 52: 20/07/16 - NE
 Rev 53: 20/07/16 - NE
 Rev 54: 20/07/16 - NE
 Rev 55: 20/07/16 - NE
 Rev 56: 20/07/16 - NE
 Rev 57: 20/07/16 - NE
 Rev 58: 20/07/16 - NE
 Rev 59: 20/07/16 - NE
 Rev 60: 20/07/16 - NE
 Rev 61: 20/07/16 - NE
 Rev 62: 20/07/16 - NE
 Rev 63: 20/07/16 - NE
 Rev 64: 20/07/16 - NE
 Rev 65: 20/07/16 - NE
 Rev 66: 20/07/16 - NE
 Rev 67: 20/07/16 - NE
 Rev 68: 20/07/16 - NE
 Rev 69: 20/07/16 - NE
 Rev 70: 20/07/16 - NE
 Rev 71: 20/07/16 - NE
 Rev 72: 20/07/16 - NE
 Rev 73: 20/07/16 - NE
 Rev 74: 20/07/16 - NE
 Rev 75: 20/07/16 - NE
 Rev 76: 20/07/16 - NE
 Rev 77: 20/07/16 - NE
 Rev 78: 20/07/16 - NE
 Rev 79: 20/07/16 - NE
 Rev 80: 20/07/16 - NE
 Rev 81: 20/07/16 - NE
 Rev 82: 20/07/16 - NE
 Rev 83: 20/07/16 - NE
 Rev 84: 20/07/16 - NE
 Rev 85: 20/07/16 - NE
 Rev 86: 20/07/16 - NE
 Rev 87: 20/07/16 - NE
 Rev 88: 20/07/16 - NE
 Rev 89: 20/07/16 - NE
 Rev 90: 20/07/16 - NE
 Rev 91: 20/07/16 - NE
 Rev 92: 20/07/16 - NE
 Rev 93: 20/07/16 - NE
 Rev 94: 20/07/16 - NE
 Rev 95: 20/07/16 - NE
 Rev 96: 20/07/16 - NE
 Rev 97: 20/07/16 - NE
 Rev 98: 20/07/16 - NE
 Rev 99: 20/07/16 - NE
 Rev 100: 20/07/16 - NE



Ground Floor Plan
 1:100 Scale

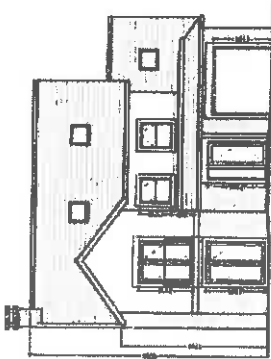


Foundation Plan
 (Subject to Structural Engineer's details)
 1:100 Scale

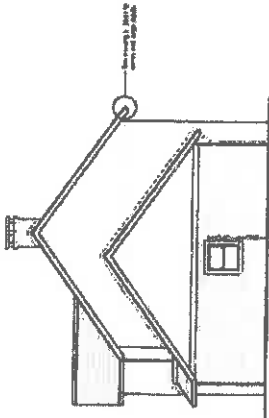
Structural Engineering
 1000 West 10th Street
 Saskatoon, Saskatchewan S7N 3K5
 Tel: (306) 975-1111
 Fax: (306) 975-1112
 Email: info@sp.ca

Project:
 Ground Floor Plan and Elevation
 TRUSSES

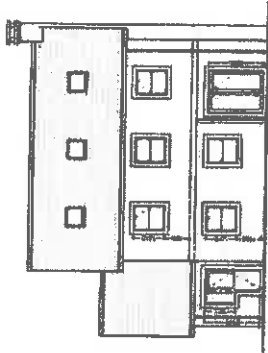
Sheet:
 5138 - 16



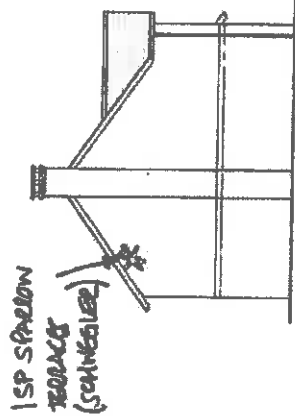
South East (Front) Elevation
1/8" = 1'-0"



North East Elevation
1/8" = 1'-0"

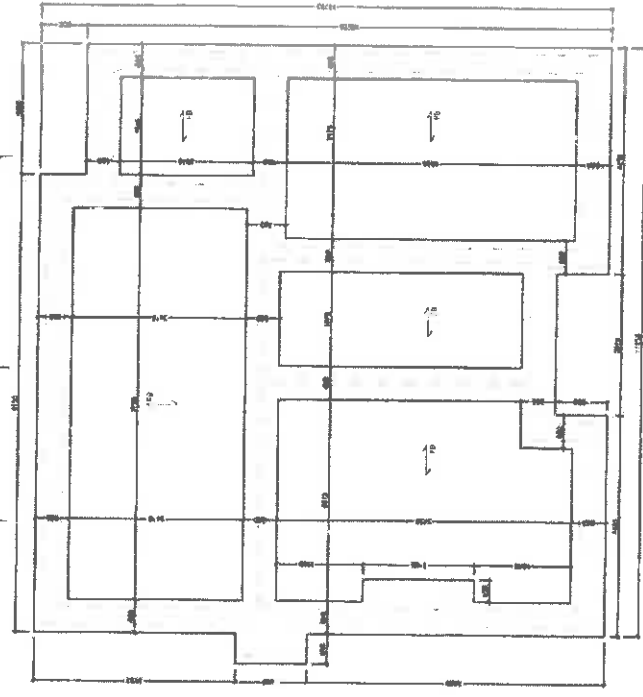


North West (Rear) Elevation
1/8" = 1'-0"

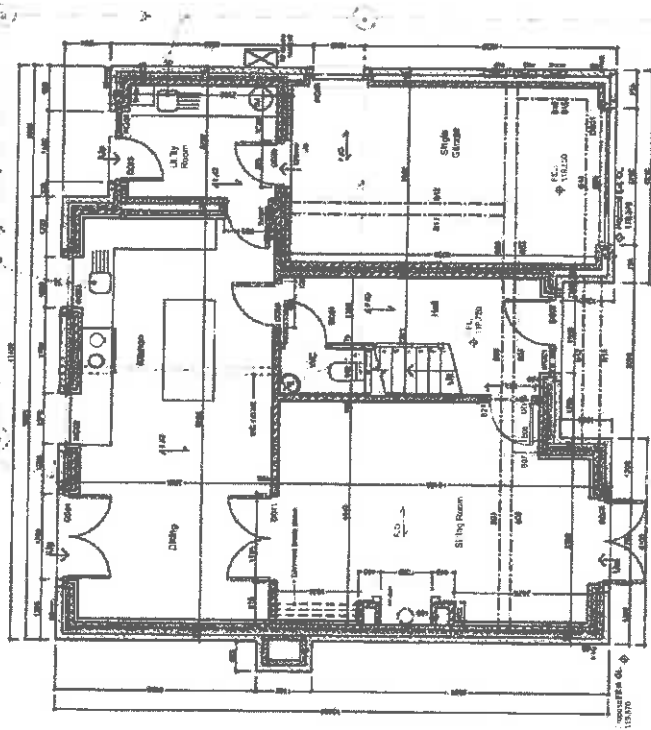


South West Elevation
1/8" = 1'-0"

Notes:
 Foundation layout is for indicative purposes and must be used in conjunction with the Structural Engineer's details.
 Foundation setting out line: 800 x 225mm REE and generally refer to Structural Engineer's details.



Foundation Plan
 (Subject to Structural Engineer's details)
 1/8" = 1'-0"



Ground Floor Plan
 1/8" = 1'-0"

- All dimensions given to face of stone/blockwork.
- Materials**
- Roof: Min. 12 blue slate and lead flat, 18mm.
 - Walls: 225mm brickwork on random rubble base to be dark grey.
 - Base: 150mm red brick, 210 to have dark grey.
 - Recessed: 150mm brick with white soffits.
 - Windows: 150mm brick with white soffits.
 - Roof: 150mm brick with white soffits.
 - Windows: 150mm brick with white soffits.
 - Roof: 150mm brick with white soffits.
 - Windows: 150mm brick with white soffits.
 - Roof: 150mm brick with white soffits.
 - Windows: 150mm brick with white soffits.

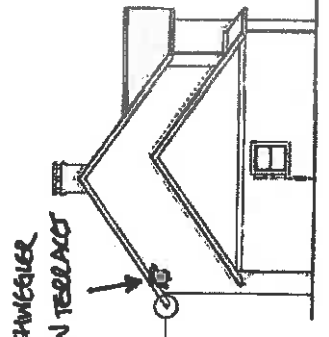
REVISIONS

1. Proposed Elevation of 10 houses on site of Chubbart Old Farm, Chubbart, Co. Wick.

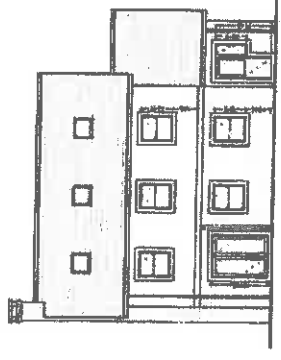
J.J. Conroy Ltd.
 Proposed Elevation of 10 houses on site of Chubbart Old Farm, Chubbart, Co. Wick.

SP
 SPARROW TRUSSES
 Proposed Foundation Plan
 Ground Floor Plan and Elevations
 1/8" = 1'-0"

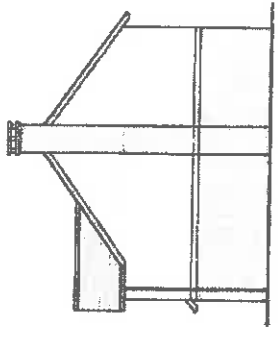
SPAWSON TERRACE
 1530 75th Street, Richmond, BC V6X 1G9
 Tel: (604) 273-8888
 Fax: (604) 273-8889
 www.schwabiel.com



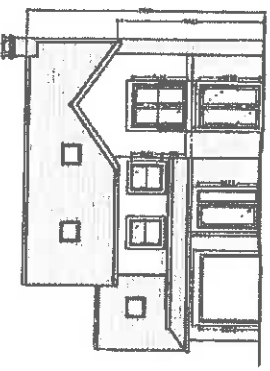
South West Elevation
 1:50 Scale



North West (Rear) Elevation
 1:50 Scale

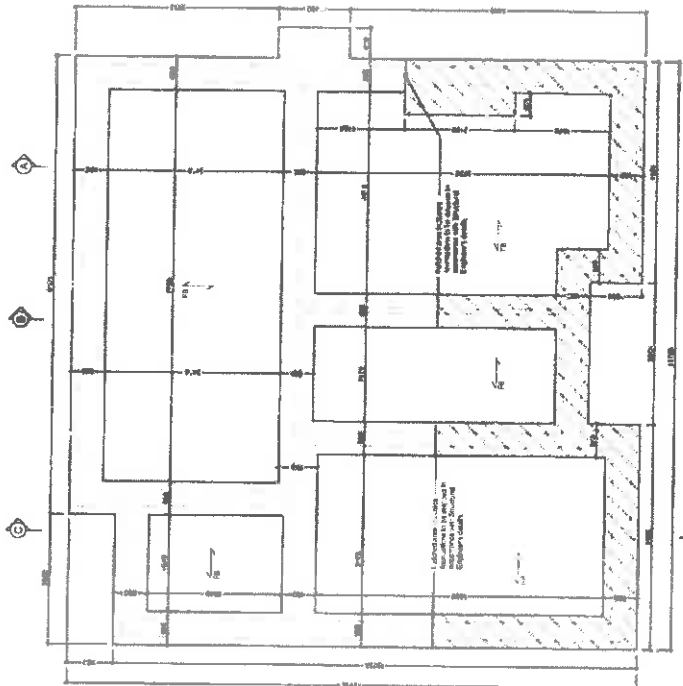


North East Elevation
 1:50 Scale

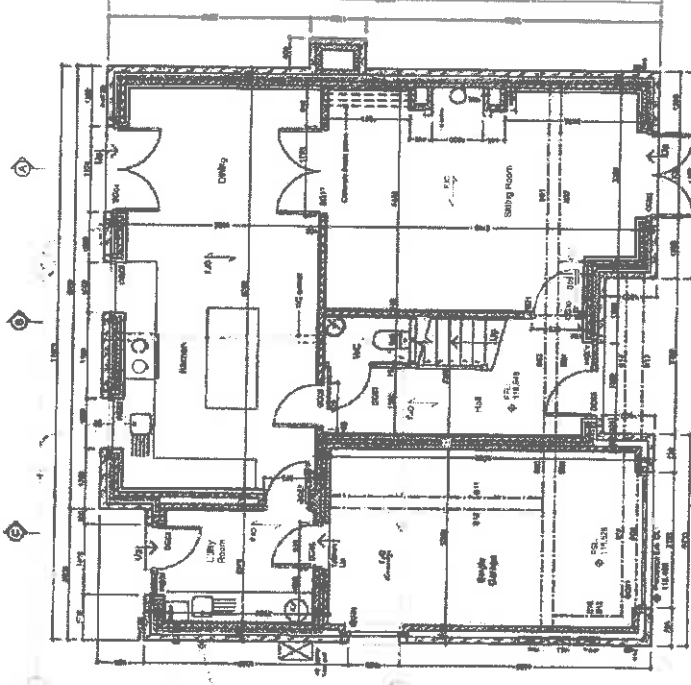


South East (Front) Elevation
 1:50 Scale

Foundation setting out plans.
 600 x 725mm RE conc slab generally.
 For foundation type and construction,
 refer to Structural Engineer's details.



Foundation Plan
 (Subject to Structural Engineer's details)
 1:50 Scale



Ground Floor Plan
 1:50 Scale



All dimensions given to face
 of structural elements

- Materials**
- Roof: 15mm Gypsum board and lead flat where
 - For fire rating aluminium rainwater goods to be cast grey
 - Interior: 15mm Gypsum board with 25mm mineral wool insulation to have new grey
 - Walls: 100mm concrete frame with exposed clay heads and stucco finish
 - Windows/doors: White woodwork
 - Doors: 45mm fibre
 - Composite or powder coated aluminium

REVISIONS:

- Rev A - Updated structural drawings (1.00) & NE
- Rev B - Updated structural drawings (1.00) & NE
- Rev C - Updated structural drawings (1.00) & NE
- Rev D - Updated structural drawings (1.00) & NE

4 - J Construction Ltd
 Project # J-100001 of 10 houses on lot 2 off
 Crabhorn

SP
 Structural Professional
 1530 75th Street, Richmond, BC V6X 1G9
 Tel: (604) 273-8888
 Fax: (604) 273-8889
 www.schwabiel.com