

Kirk Mill, Chipping

Loft Boarding

The loft boarding is contained in the roof space of the three storey wheel house, which is the section of the building that abuts Malt Kiln Brow. The Heritage Assessment¹ prepared by Oxford Archaeology North shows that this part of the building was an early phase of expansion to the east of the original Arkwright Mill and it dates most probably from the early nineteenth century.

Within the Heritage Assessment the loft boarding is not identified as being an interior component of any significance in the Assessment of Significance of Kirk Mill.

The loft boarding has recently been exposed to view following the removal of a later inserted plasterboard ceiling that previously was fixed to the ceiling joists. The loft boarding was inspected visually from below on Tuesday 11th October 2016. The loft is boarded with patchwork of materials including timber boards of varying types and sizes and, in some areas, with what appears to be timber doors laid across the joists. There are infill panels of timber in some areas which are loosely laid and unfixed.

No access was possible to the loft boarding because it is in a poor condition. There are several areas of boarding that are badly affected by wet rot due to water ingress from the roof above.

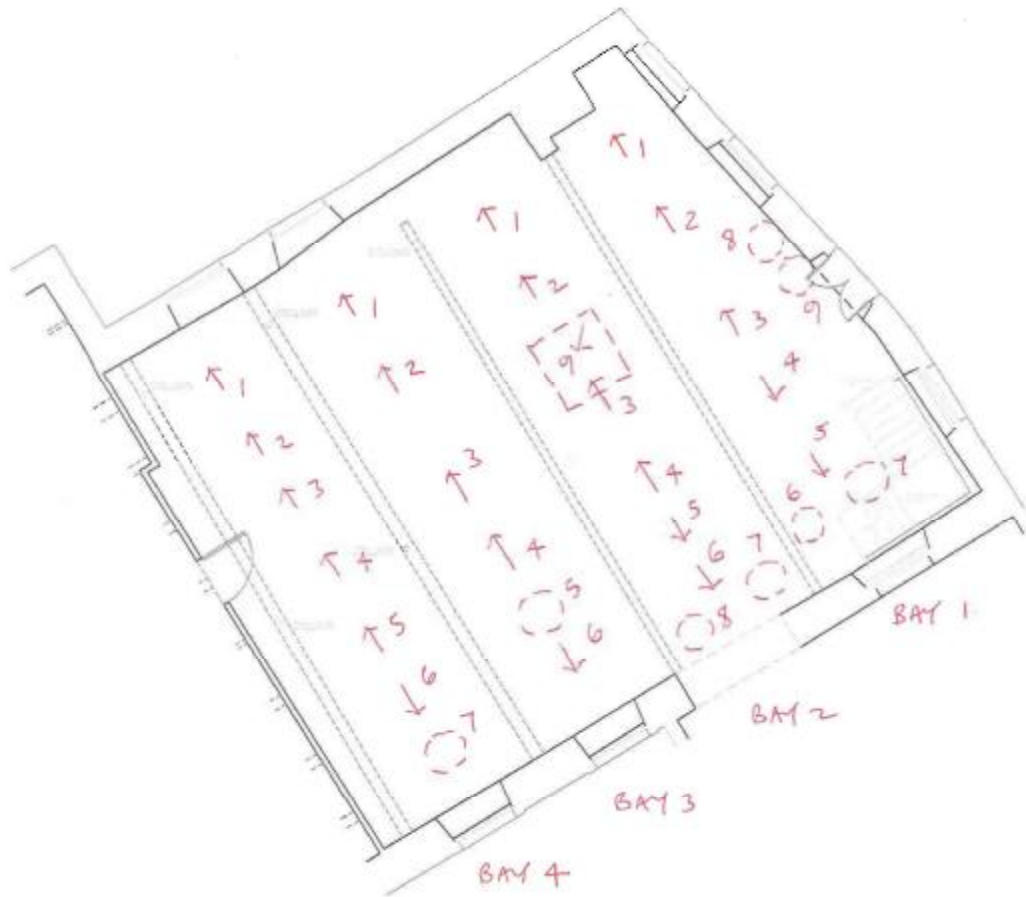
Some of the ceiling joists have been notched from below to accommodate metal conduit for electrical services.

A section of the loft boarding and ceiling joists in one of the bays has been removed previously because of the effects of water ingress and due to the need to carry out urgent works to mitigate further damage.

A photographic record has been compiled showing the loft boarding from below and the location of the photographs is recorded on a reference plan.

It is proposed to remove the entire loft boarding because of its poor condition and the irregular mix of materials and components used in its construction.

¹ Heritage Assessment, Chipping Lancashire, Oxford Archaeology North, September 2013, Ref: L10602, Issue No: 2013-14/1438.



Bay 1_1



Bay 1_2



Bay 1_3



Bay 1_4



Bay 1_5



Bay 1_6



Bay 1_7



Bay 1_8



Bay 1_9



Bay 2_1



Bay 2_2



Bay 2_3



Bay 2_4



Bay 2_5



Bay 2_6



Bay 2_7



Bay 2_8



Bay 2_9



Bay 3_1



Bay 3_2



Bay 3_3



Bay 3_4



Bay 3_5



Bay 3_6



Bay 4_1



Bay 4_2



Bay 4_3



Bay 4_4



Bay 4_5



Bay 4_6



Bay 4_7