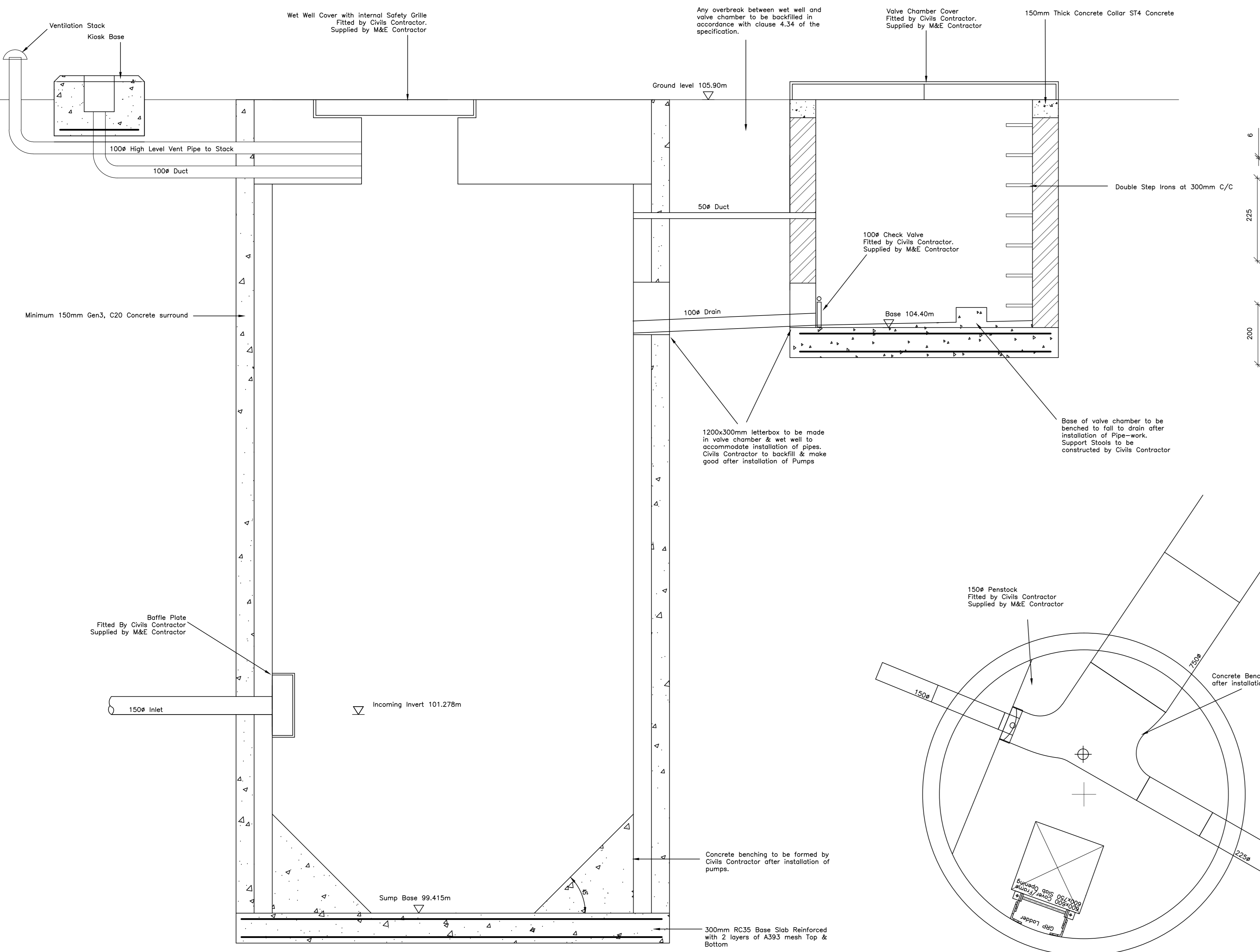
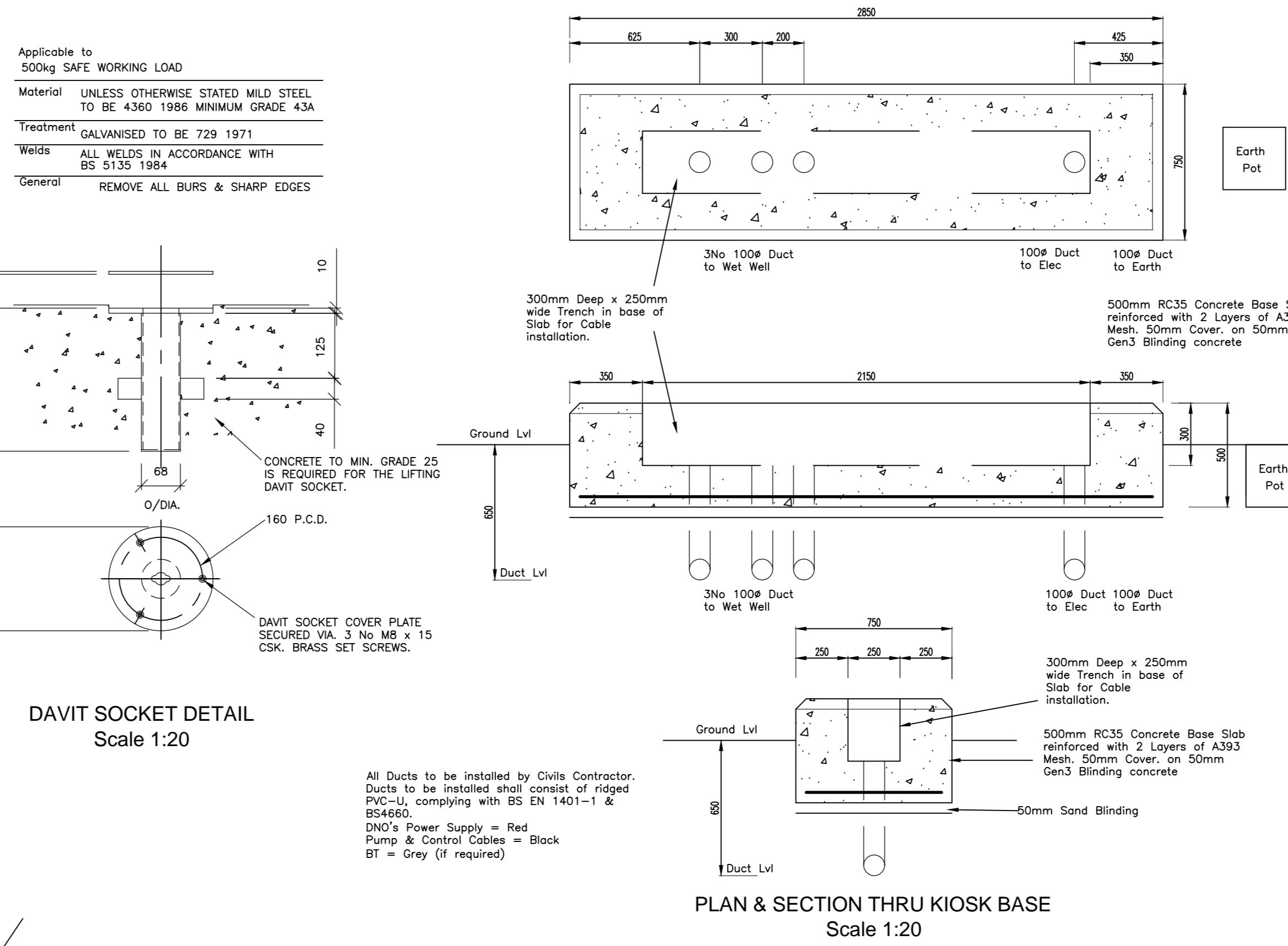


WARNING TO HOUSE-PURCHASERS
Property Misdescriptions Act 1991

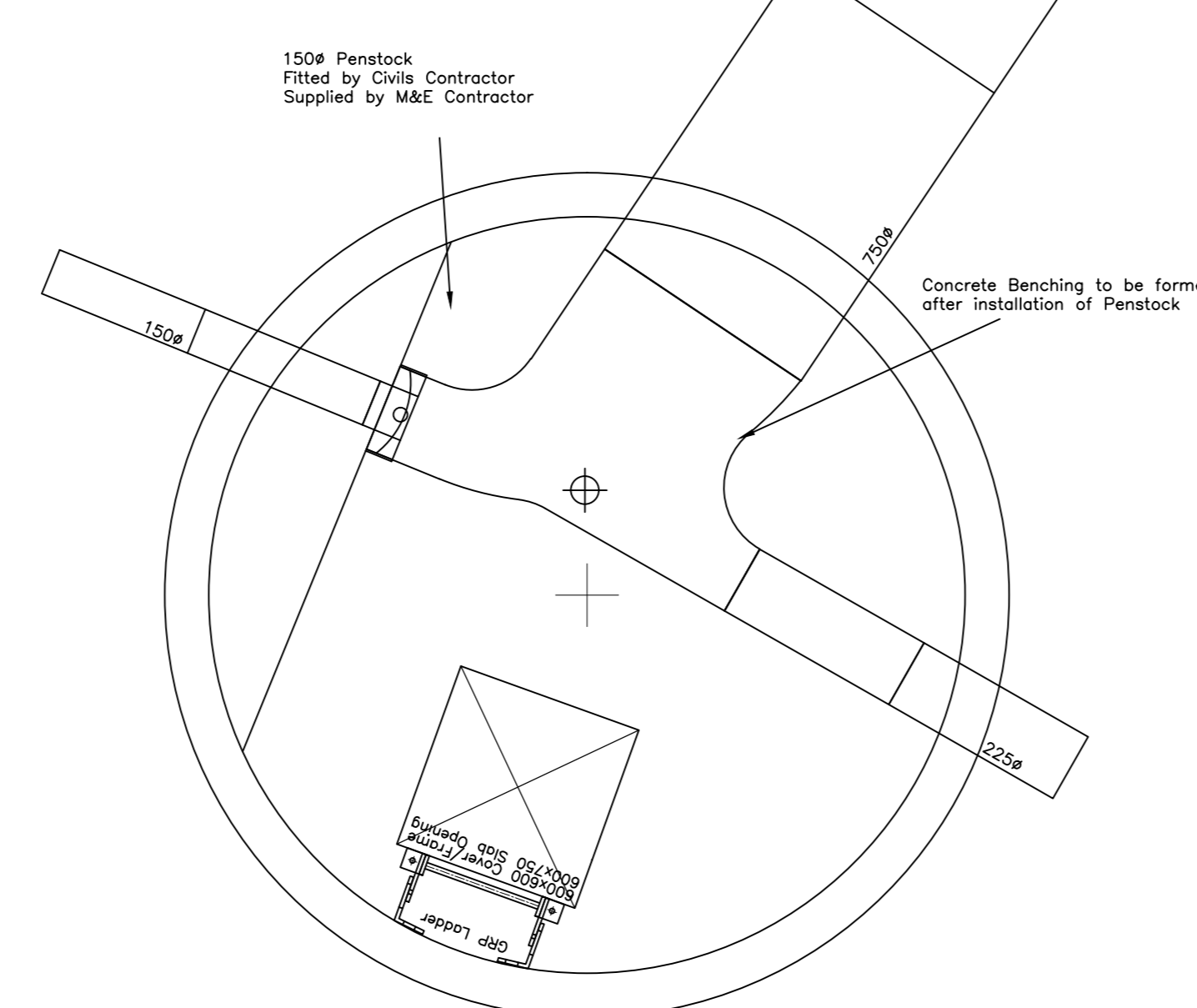
Buyers are warned that this is a working drawing and is not intended to be treated as definitive material describing in relation to any particular property or development, any of the specified matters prescribed by any Order made under the above Act. The contents of this drawing may be subject to change at any time and alterations and variations can occur during the progress of the works without revision of the drawing. Consequently the layout, form, content and dimensions of the finished construction may differ materially from those shown. Nor do the contents of this drawing constitute a contract, part of any contract or warranty.



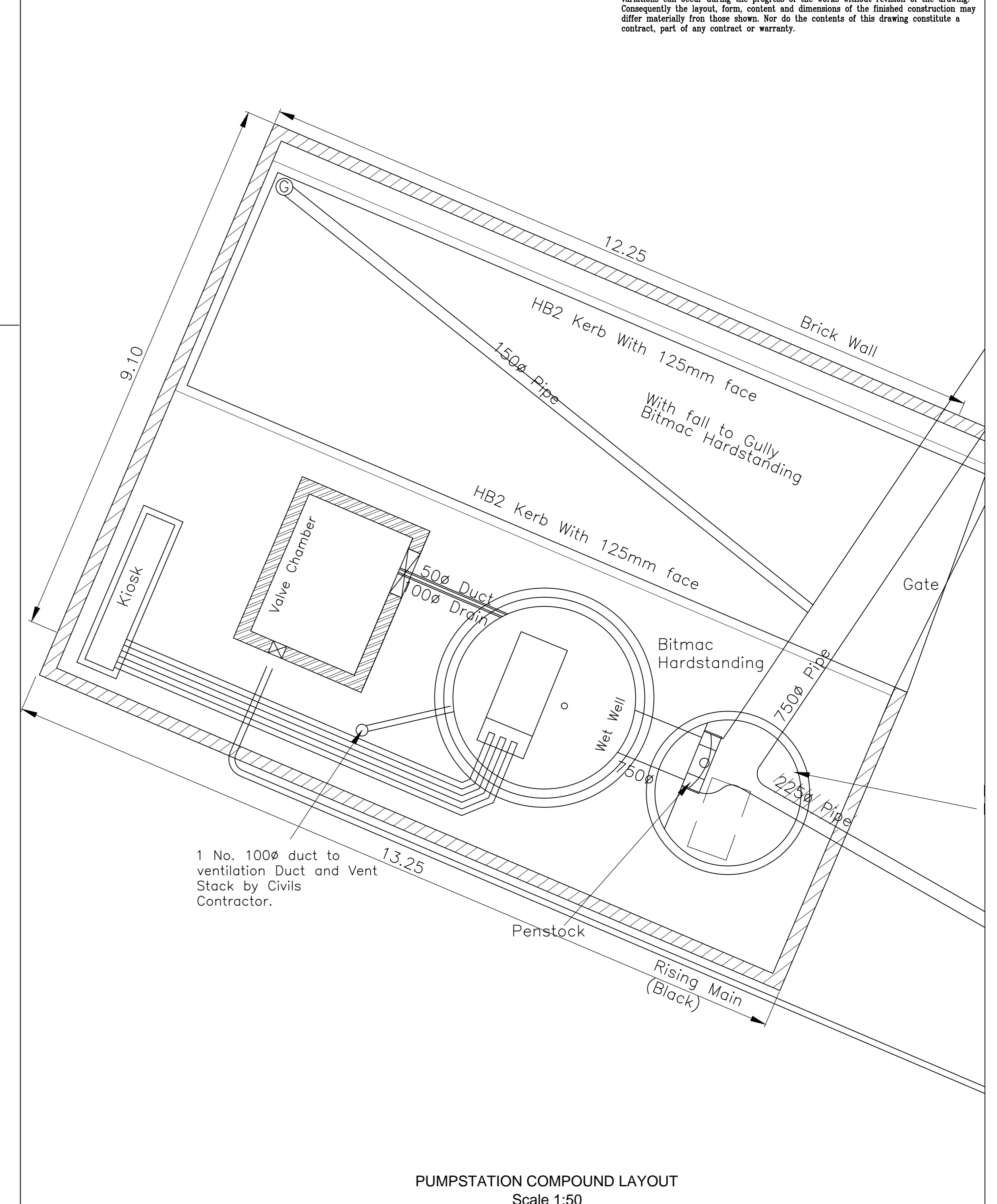
SECTION THROUGH WET WELL & VALVE CHAMBER
Scale 1:20



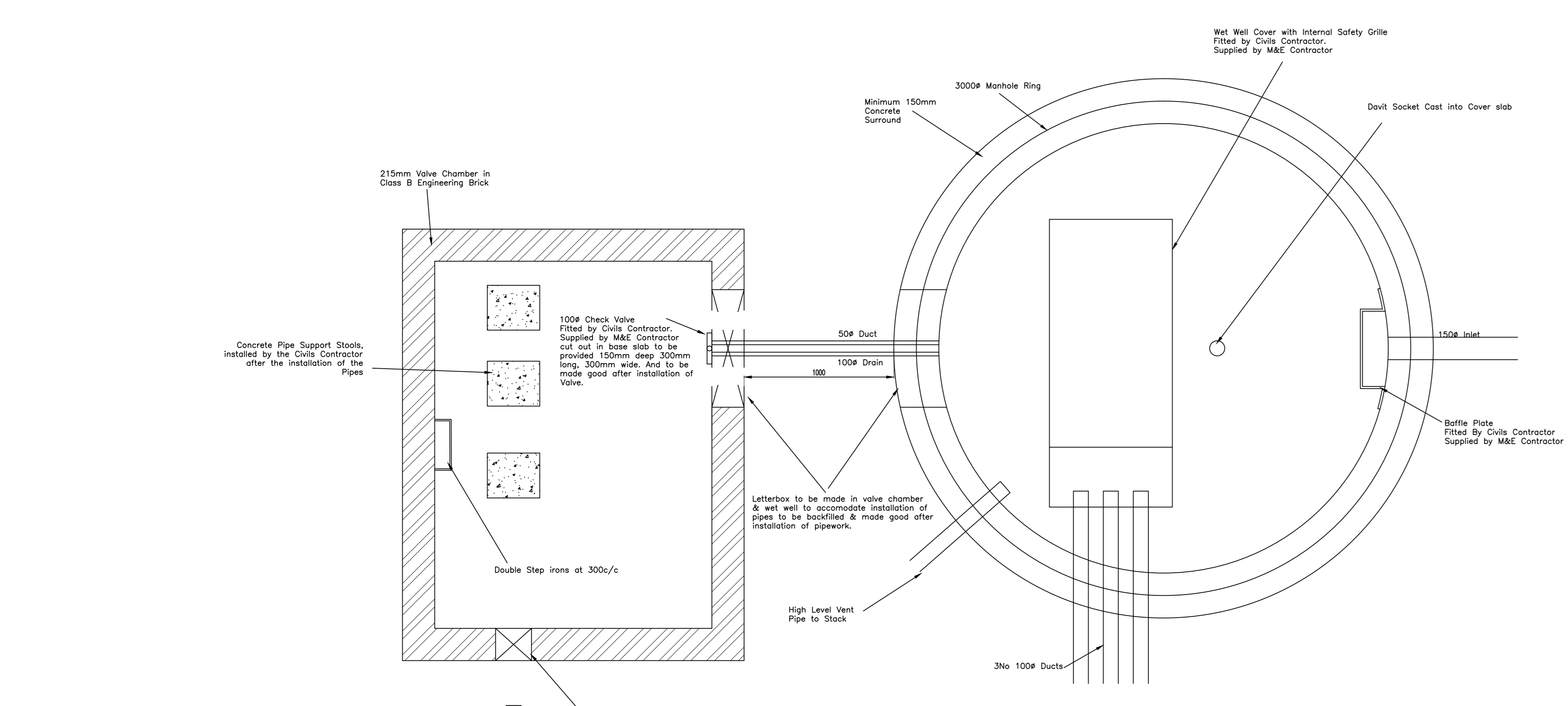
DAVIT SOCKET DETAIL
Scale 1:20



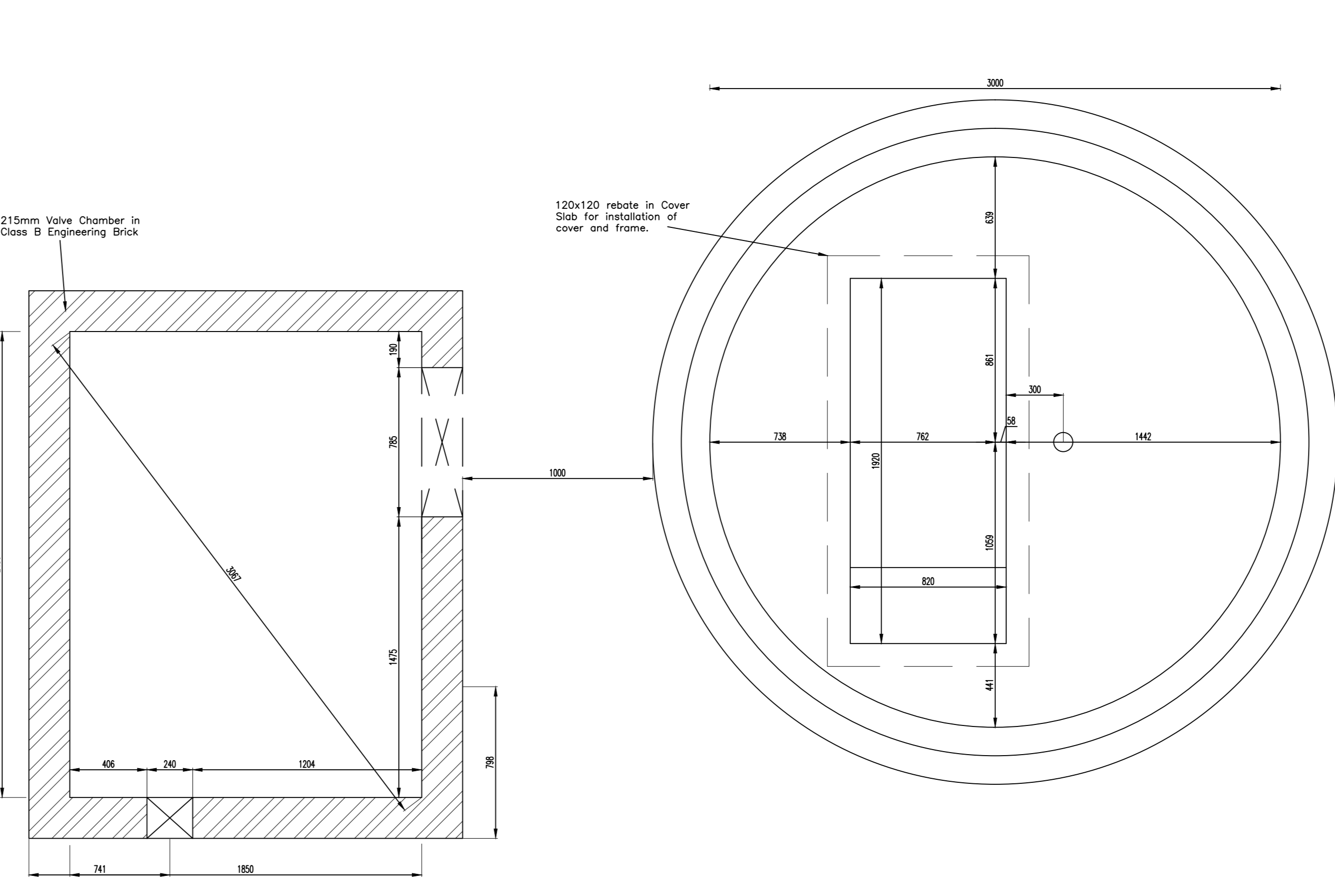
PENSTOCK MANHOLE PLAN & SECTION
Scale 1:20



PUMPSTATION COMPOUND LAYOUT
Scale 1:50



PLAN OF WET WELL & VALVE CHAMBER
Scale 1:20

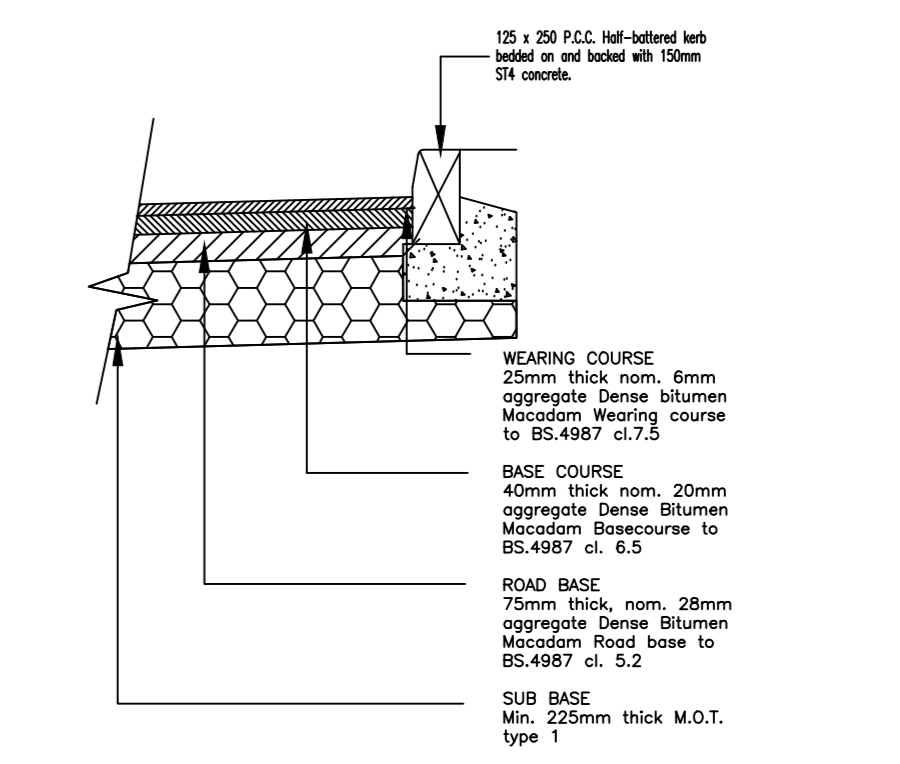


VALVE CHAMBER ACCESS OPENING POSITION
Scale 1:20

WET WELL ACCESS OPENING POSITION
Scale 1:20

NOTES:
1. Base-outs to be made good by the Civils Contractor after installation of pipework.
2. All fixing through bolts into concrete to be stainless steel.
3. All ducts to be c/w draw coats.
4. All dimensions to be checked prior to pump & pipe-work installation. Any discrepancies must be notified to developer.
5. All work to be in accordance with 'Sewers for Adoption, 7th Edition.'

NOTES:
The appointed contractor is to price for the installation ONLY of the following items:
1. Access cover and frame with integral safety grille for the wet well. [Spring assisted].
2. Multi cover access and frame (2400 x 1800) for the valve chamber. [Spring assisted].
3. Cast in type davit socket.
4. Baffle Plate to enclose incoming 150mm sewer connection.
5. Check valve for valve chamber drain.
6. Penstock.



DRIVEWAY CONSTRUCTION DETAILS
Scale 1:20

B	INCOMING INVERT & SUMP LEVELS REVISED	05.10.16	CD
A	KIOSK BASE REVISED: CONNECTION PIPE DIA. BETWEEN PENSTOCK AND WET WELL REVISED.	15.08.16	CD

BARRATT HOMES MANCHESTER
(A division of BDM Trading Ltd)
4 Brindley Road
City Park
Manchester
M16 9HQ
Tel: 0161 872 0161
Fax: 0161 855 2828

Job	Chipping Lane Longridge		
Title	Proposed Pumping Station Civils Only		
Design By	Date	Drawing Number	Rev
CD	20.07.16	459/ED/15	B
CAD By	Scale	As Shown	