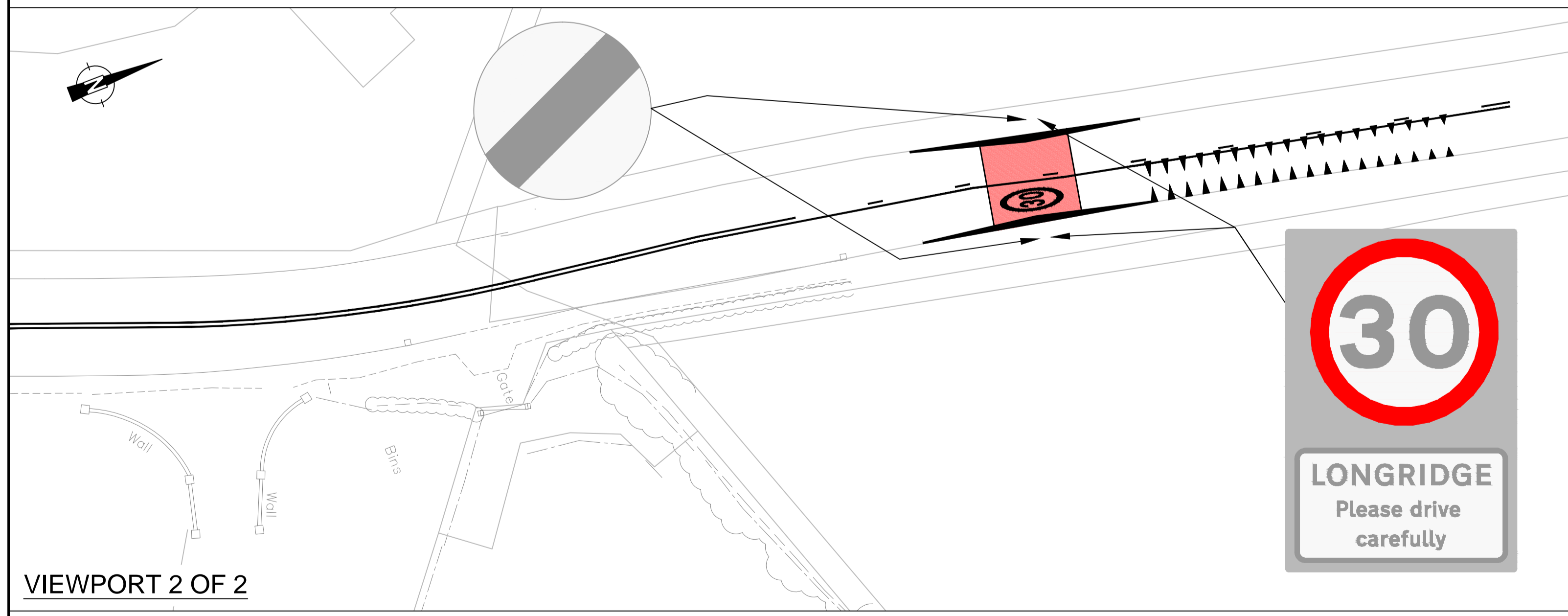
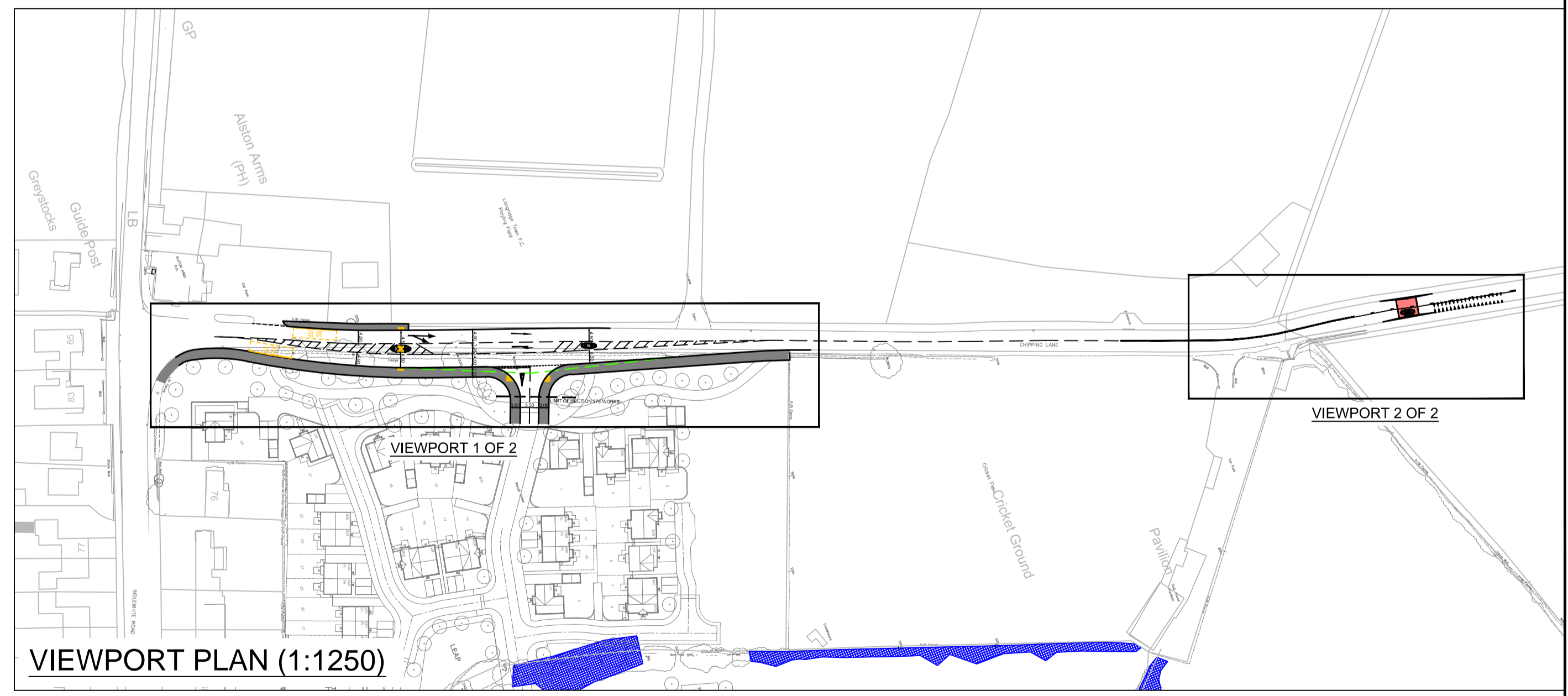


VIEWPORT 1 OF 2



VIEWPORT 2 OF 2



VIEWPORT PLAN (1:1250)

NOTE: THE PROPERTY OF THIS DRAWING AND DESIGN IS VESTED IN VECTOS (NORTH) LTD. IT MUST NOT BE COPIED OR REPRODUCED IN ANY WAY WITHOUT THEIR PRIOR WRITTEN CONSENT.

REV.	DETAILS	DRAWN	CHECKED	DATE	REV.	DETAILS	DRAWN	CHECKED	DATE	Notes:
A	Carriageway realigned to provide 4.5m width through islands.	SR	MIS	Jan 2016						
B	Phase 2 entry removed. Footpath altered to tie in accordingly.	TF	SR	June 2016						
C	Southern footway tie in amended to avoid BT cabinet	TF	SR	July 2016						

Awaiting Technical Approval

NOTES:
This drawing has NOT been and technically approved by LCC.

PROJECT: CHIPPING LANE, LONGRIDGE				CLIENT: BARRATT HOMES	
DRAWING TITLE: Sc278 HIGHWAY IMPROVEMENT WORKS - PHASE 1 GENERAL ARRANGEMENT				vectos <small>transport planning specialists</small> Oxford Place, 61 Oxford Street, Manchester M1 6EQ t: 0161 228 1008 e: enquiries@vectos.co.uk	
DRAWN: MF	CHECKED: SR	DATE: 06/01/2016	SCALE: 1:250 @ A1		
DRAWING NUMBER: VD15354-100				REVISION: C	