



Thorn LINN Rectangular Recess Box



Thorn LINN Rectangular Light (sits within recess box)



Thorn LINN Square Recess Box



Thorn LINN Square Light (sits within recess box)



Collingwood Lighting Spike Light 3W  
(Directional light with adjustable angle)



Uplighter Type 1 - Collingwood Lighting 3W uplighter

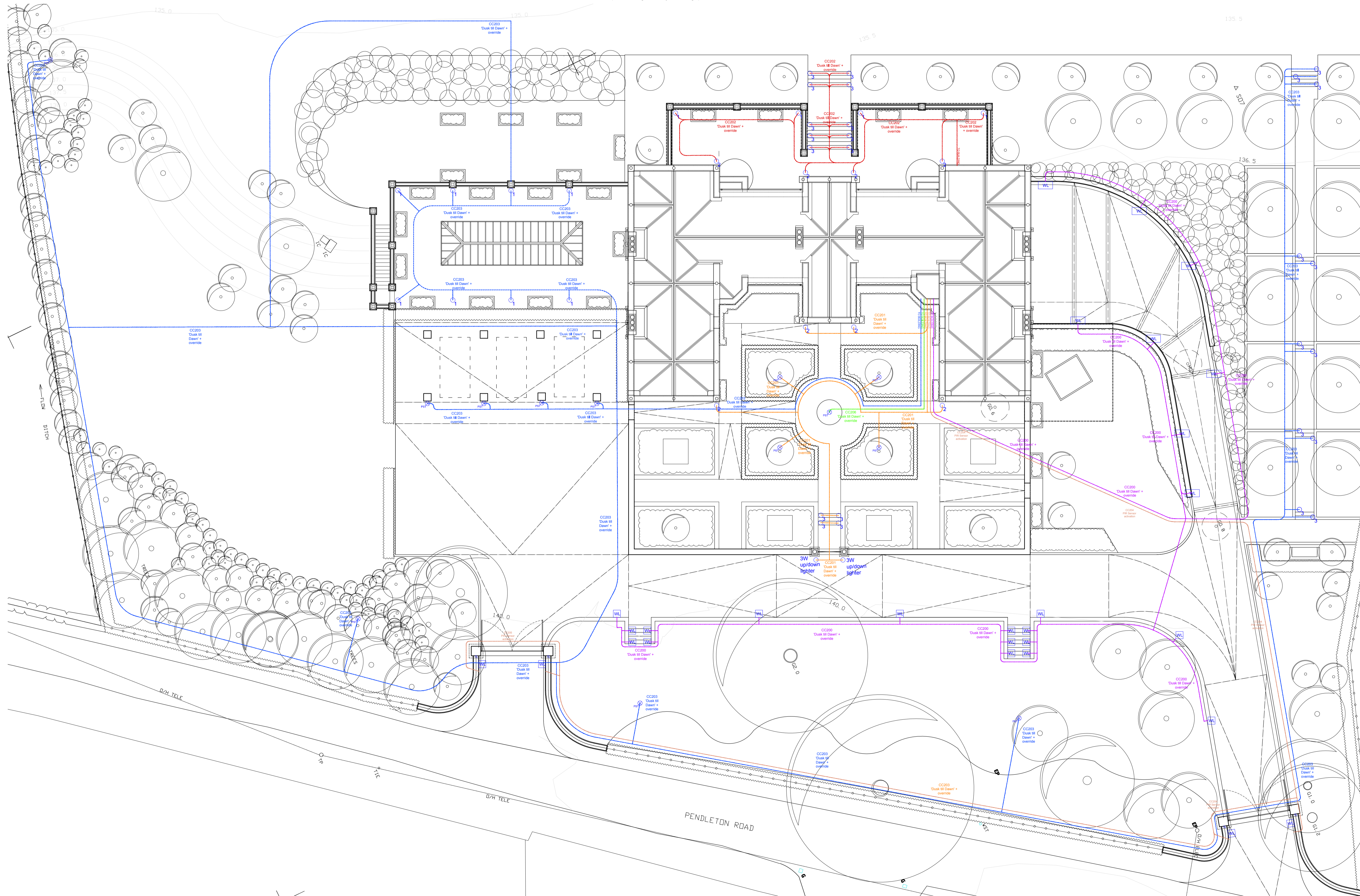


Uplighter Type 2 - Collingwood Lighting 7W uplighter



Uplighter Type 3 - Collingwood Lighting 5W marker light

- NOTES**
- All dimensions and levels are to be checked on site.
  - Any discrepancies are to be reported to the Shaw & Jagger Architects Ltd before any work commences.
  - This drawing shall not be scaled to ascertain any dimensions. Work to figured dimensions only.
  - This drawing shall not be reproduced without express written permission from Shaw & Jagger Architects Ltd.
  - Title overlay drawings and ownership boundaries are produced using all reasonable endeavors. Shaw & Jagger Architects Ltd cannot be responsible for the accuracy or scale discrepancy of base plans supplied to them.



**ELECTRICAL KEY**

	Twin switched 13amp external socket outlet
	Rectangular recessed wall mounted light Thorn LINN 18W Rectangular Light With LINN Rectangular Baffle Frame
	Square recessed wall mounted light Thorn LINN 3W LED Square Light With LINN Square Baffle Frame
	Spike Light Collingwood Lighting SL220A Mains 3W (Straight to mains LED Directional Spike Light)
	Ground mounted Uplighter type 1 Collingwood Lighting GL040 (3W LED Ground Light)
	Ground mounted Uplighter type 2 Collingwood Lighting GL090 (7w LED Ground Light)
	Ground mounted Sidelighter type 3 Collingwood Lighting GL064 (5W 4 Way LED Marker Light)

rev	date	drawn	checked
A	28/02/17	JR	EJ

NUMBER OF LIGHTS REDUCED FOLLOWING PLANNERS COMMENTS. LIGHT TYPES CHANGED TO CERTAIN AREAS TO SHOW DIRECTIONAL LIGHTS RATHER THAN UPLIGHTERS

drawing stage **PLANNING**

drawing status **APPROVAL**

client **WISWELL MANOR**

project **NEW HALL  
PENDLETON ROAD  
WISWELL**

drawing title **SITE ELECTRICAL LAYOUT PLAN**

date	drawn	checked
04/11/13	JR	ED

scale **1:150 @ A1**

**SHAW & JAGGER**  
ARCHITECTS

14 - 15 Regent Parade  
Harrogate  
North Yorkshire  
HG1 5AW  
Tel: 01423 532950  
info@shawandjagger.com  
www.shawandjagger.com

Job No **137/01 (60)001 A**      DWG No      Rev