



Thorn LINN Rectangular Recess Box



Thorn LINN Rectangular Light (sits within recess box)



Thorn LINN Square Recess Box



Thorn LINN Square Light (sits within recess box)



Collingwood Lighting Spike Light



Uplighter Type 1 - Collingwood Lighting 3W uplighter



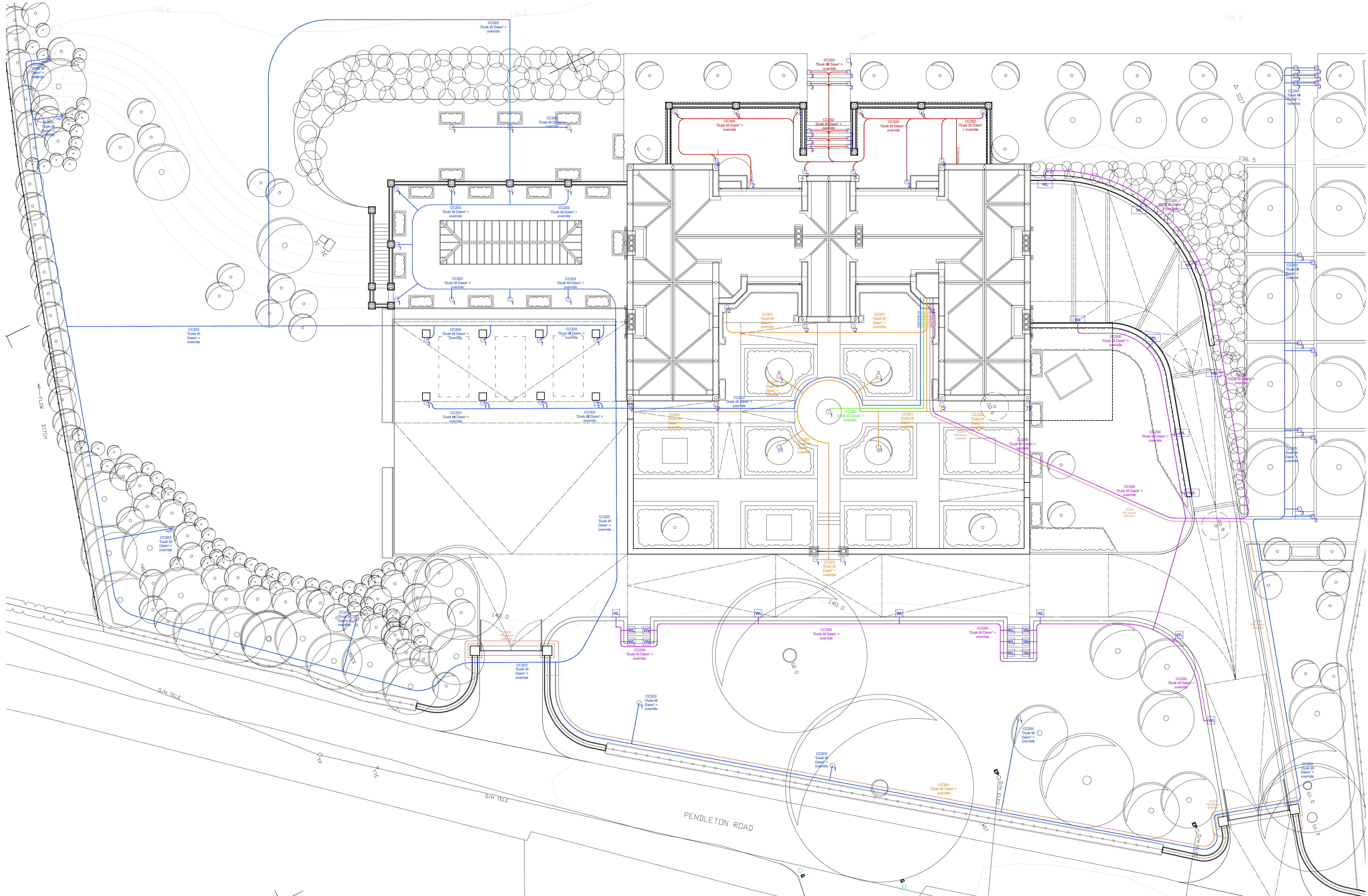
Uplighter Type 2 - Collingwood Lighting 7W uplighter



Uplighter Type 3 - Collingwood Lighting 5W marker light

NOTES

- All dimensions and levels are to be checked on site.
- Any discrepancies are to be reported to the Shaw & Jagger Architects Ltd before any work commences.
- This drawing shall not be scaled to ascertain any dimensions. Work to figured dimensions only.
- This drawing shall not be reproduced without express written permission from Shaw & Jagger Architects Ltd.
- Title overlay drawings and ownership boundaries are produced using all reasonable endeavors. Shaw & Jagger Architects Ltd cannot be responsible for the accuracy or scale discrepancy of base plans supplied to them.



ELECTRICAL KEY

- Twin switched 13amp external socket outlet.
- Rectangular recessed wall mounted light with Thorn LINN 18W Rectangular Light with LINN Rectangular Baffle Frame.
- Square recessed wall mounted light with Thorn LINN 3W LED Square Light with LINN Square Baffle Frame.
- Spike Light with Collingwood Lighting SL220A Mains (Straight to mains LED Spike Light).
- Ground mounted Uplighter type 1 with Collingwood Lighting GL040 (3W LED Ground Light).
- Ground mounted Uplighter type 2 with Collingwood Lighting GL090 (7w LED Ground Light).
- Ground mounted Uplighter type 3 with Collingwood Lighting GL064 (5W 4 Way LED Marker Light).

drawing stage	PLANNING
drawing status	APPROVAL
client	WISWELL MANOR
project	NEW HALL PENDLETON ROAD WISWELL
drawing title	SITE ELECTRICAL LAYOUT PLAN
date	04/11/13
scale	1:150 @ A1
drawn	JR
checked	ED

SHAW & JAGGER
ARCHITECTS
14 - 15 Regent Parade
Harrogate
North Yorkshire
HG1 5AW
Tel: 01423 532950
info@shawandjagger.com
www.shawandjagger.com