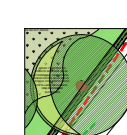

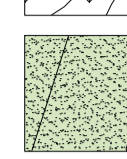
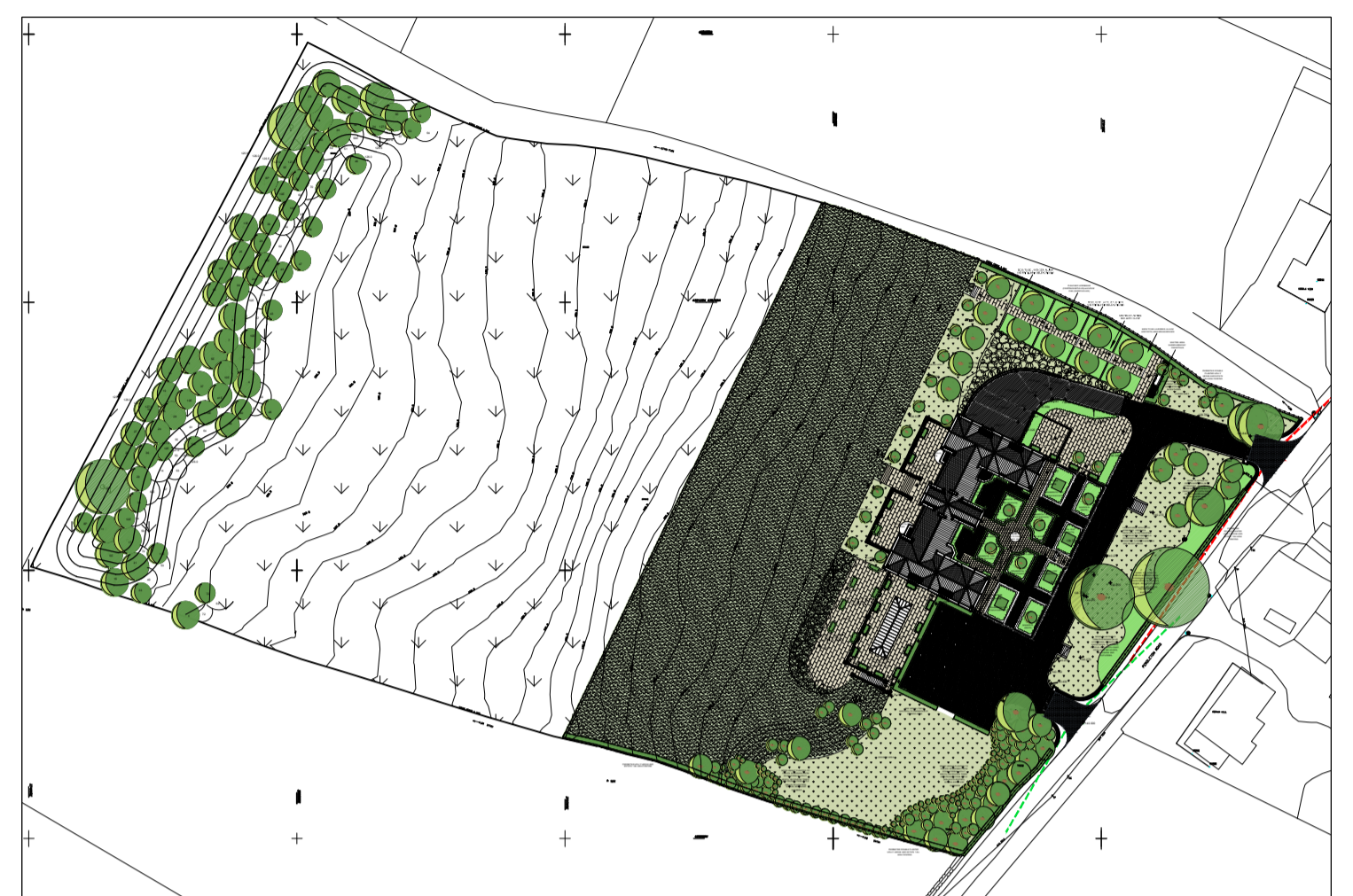


-  Individual trees/shrubs
-  Semi improved grassland, maintained by grazing animals
-  unimproved grassland/wildflower meadow

NOTES

- All dimensions and levels are to be checked on site.
- Any discrepancies are to be reported to the Shaw & Jagger Architects Ltd before any work commences.
- This drawing shall not be scaled to ascertain any dimensions. Work to figured dimensions only.
- This drawing shall not be reproduced without express written permission from Shaw & Jagger Architects Ltd.
- Title overlay drawings and ownership boundaries are produced using all reasonable endeavors. Shaw & Jagger Architects Ltd cannot be responsible for the accuracy or scale discrepancy of base plans supplied to them.



KEY PLAN 1:1250

No	type	size	Plant	Variety	Qty
22	STD		Acer	davidii	1
43	STD		Acer	Camival	1
44	STD		Acer	Brilliantissimum	1
23	STD		Alnus	laciniata	1
29	STD		Amalanchier	Balerina	1
30	STD		Amalanchier	Autum Brilliance	1
31	STD		Amalanchier	lamarchii	1
32	STD		Amalanchier	canadensis	1
39	STD		Betula	pink stemmed	1
2	SPEC		Carpinus	betulus 6M 20-25	1
27	STD		Cercidiphyllum	japonicum	1
9	STD		Cercis	Forest Pansy	1
10	SPEC		Conifers 1.8M	varieties NOT INCL YELLOW	12
28	STD		Comus	kousa	1
37	STD		CORNUS	chinensis white	1
50	STD		CORNUS	Battan Rouge	3
66	STD		Comus	elegantissima	3
67	STD		Comus	Gouchaltii	3
68	STD		Comus	Flaviramea	3
69	STD		Comus	kousa China Girl	1
36	STD		Corylus	purpurea	1
13	STD		Cotoneaster	cornubia	1
14	STD		Cotoneaster	Rothschildianus	3
41	STD		Cotoneaster	hybridus penulus	1
24	STD		Crataegus	monogyna	3
33	STD		Crataegus	monogyna	2
60	STD		Deutzia	Pink Pom Pom	3
51	STD		Escallonia	Apple Blossom	3
55	STD		Euonymus	Red Cascade	3
56	STD		EUONYMUS	alatus Compactus	3
70	STD		Euonymus	Red Cascade	3
73	STD		Exochorda	The Bride	6
1	SPEC		Fagus	sylyatica Purpurea 6M 20-25	1
52	STD		GRISELLINA	littoralis	3
61	STD		Griseelinia	littoralis	3
5	STD		Ilex	argentea Marginata	4
6	STD		Ilex	meserveae	1
12	STD		Ilex	aquifolium	3
45	STD		ILEX	meserveae	1
48	STD		Ilex	backifava	1
74	STD		Ilex	argentea Marginata	6
16	STD		Liquidambar	Worpleston	2
17	STD		Liquidambar	styrachifua	1
18	STD		Liquidambar	Moonbeam	1
21	STD		Magnolia	soulanguinia alba	1
40	STD		Magnolia	stellata	1
19	STD		Malus	Neville Copeman	1
20	STD		Malus	Golden Homet	1
42	STD		Malus	Profusion	1
47	STD		Malus	Royal Purple	1
54	STD		Oleria	macrodonata	6
58	STD		Osmanthus	burkwoodii	3
11	STD		Parrotia	persica	2
59	STD		Philadelphus	Belle Etiole	3
3	SPEC		Pinus	nigra 5M	1
7	STD		Prunus	senula	1
8	SPEC		Prunus	nigrescens 5M 12-14	2
26	STD		Prunus	Shirotae	1
38	STD		Prunus	avium Plena	1
46	STD		PRUNUS	Shogetsu	1
53	STD		Prunus	lusitanica	12
57	STD		Prunus	lusitanica Variegata	9
63	STD		Prunus	lus variegata	9
62	STD		Rhus	typhina	3
71	STD		Sambucus	Black Lace	6
4	SPEC		Sorbus	ana 4M 12-14	3
15	STD		Sorbus	vilmorinii	1
25	STD		Sorbus	Joseph Rock	1
34	STD		Sorbus	cashmiriana	1
35	STD		Sorbus	aucuparia	1
49	STD		Viburnum	Park Farm Hybrid	3
64	STD		Viburnum	maresii	9
72	STD		Virbunum	opulus	6
65	STD		Weigelia	white	3

drawing stage **PLANNING**

drawing status **APPROVAL**

client **NEW HALL WISWELL**

project **NEW HALL - FIELD EARTHWORKS
PENDLETON ROAD
WISWELL**

drawing title **PROPOSED SITE PLAN**

date **04/10/16** drawn **JR**

scale **1:200 @ A1** checked **ED**



Job No **137/01 (02)003 #** DWG No **Rev**