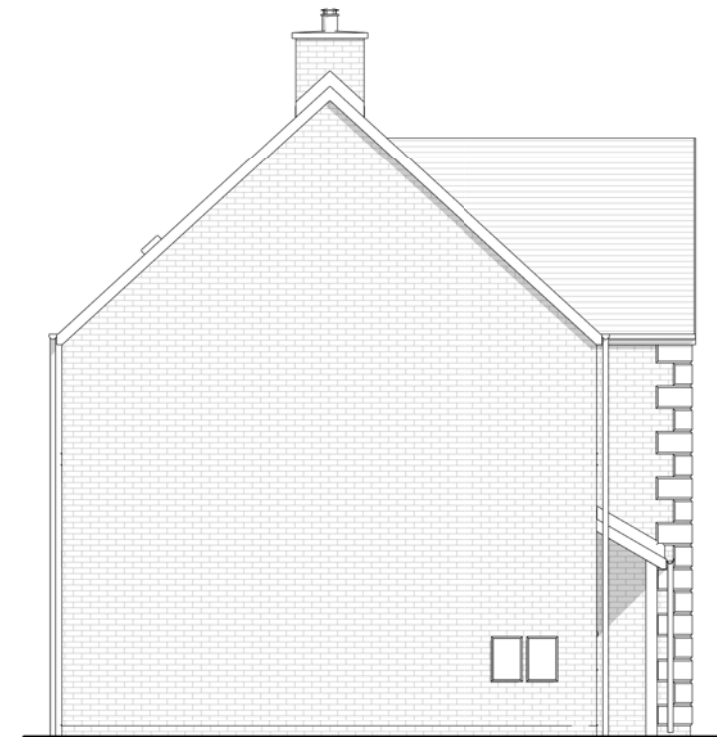
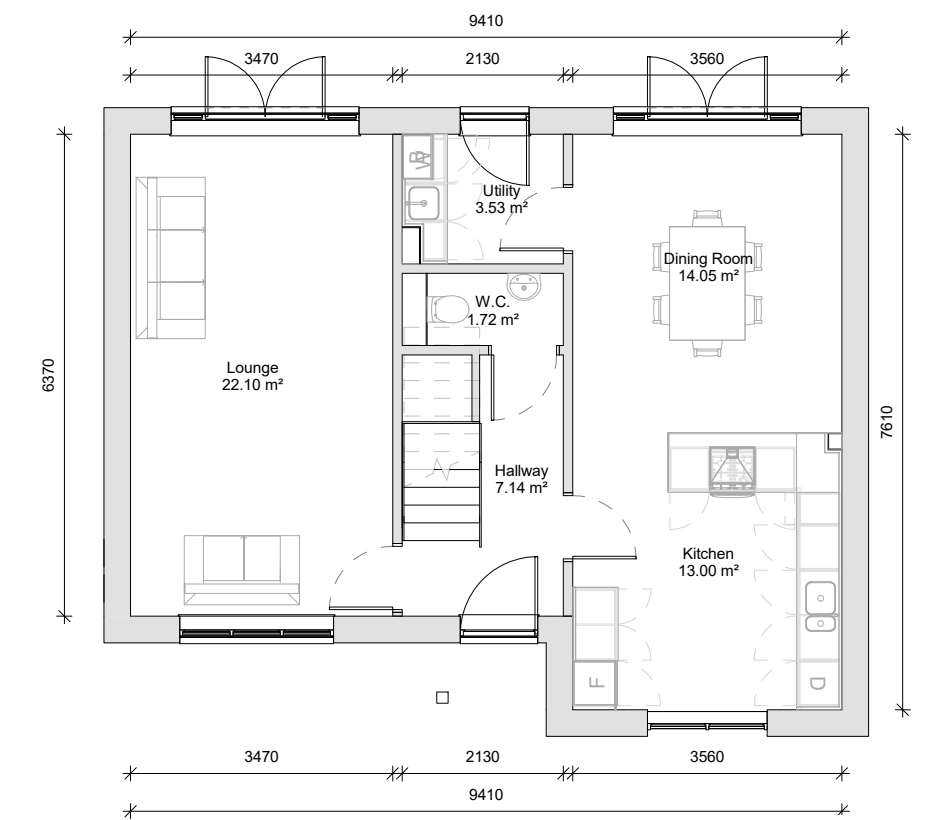
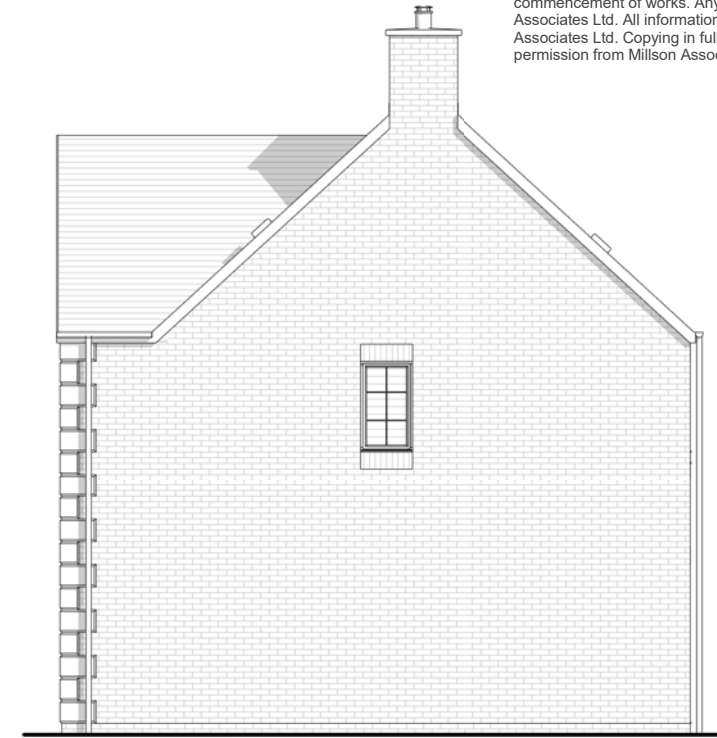
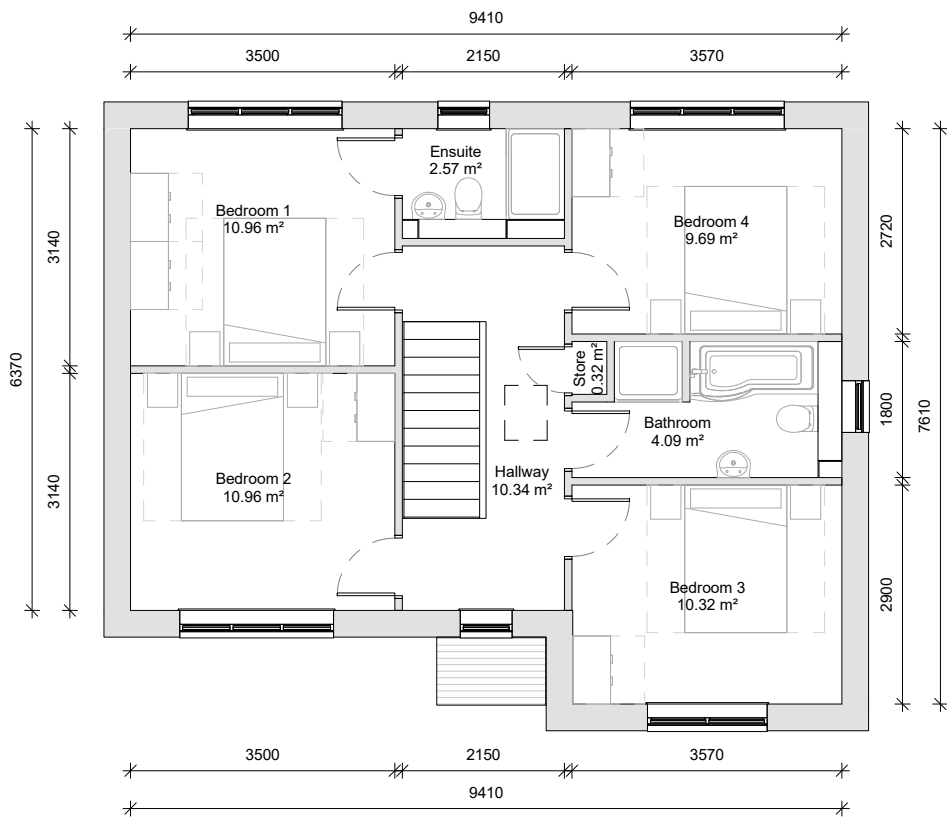


Drawing Information:  
 All levels and dimensions must be checked onsite by the contractor prior to commencement of works. Any variations must be reported to Millson Associates Ltd. All information hereon is the copyright of Millson Associates Ltd. Copying in full or part is forbidden without written permission from Millson Associates Ltd.



Additional Information:

**Area Schedule**

Floor:	Area (Metric):	Area (Imperial):
Ground Floor	65.224 m <sup>2</sup>	702.068 ft <sup>2</sup>
First Floor	65.224 m <sup>2</sup>	702.068 ft <sup>2</sup>
	130.448 m <sup>2</sup>	1404.135 ft <sup>2</sup>

Project:  
Chipping - "Finstock" House Type

Client:  
Chipping Homes Limited

Drawing:  
Overview

Drawn: LJ	Approved: RB	Date: 16/10/2017
Scale: 1 : 100	Size: A3	Rev: <b>A</b>
Status: Tender		

Byron House  
10-12 Kennedy St  
Manchester M2 4BY

0161 228 0558  
www.millsonassociates.co.uk  
info@millsonassociates.co.uk

Project Number:  
2205 - FIN

Drawing Number:  
CHP - MA - 00 - ZZ - DR - A - 0001  
Project - Origin - Zone - Level - Type - Role - Number

Rev	Revision History	By	Date
A	Issued for Tender	LJ	24/10/2017