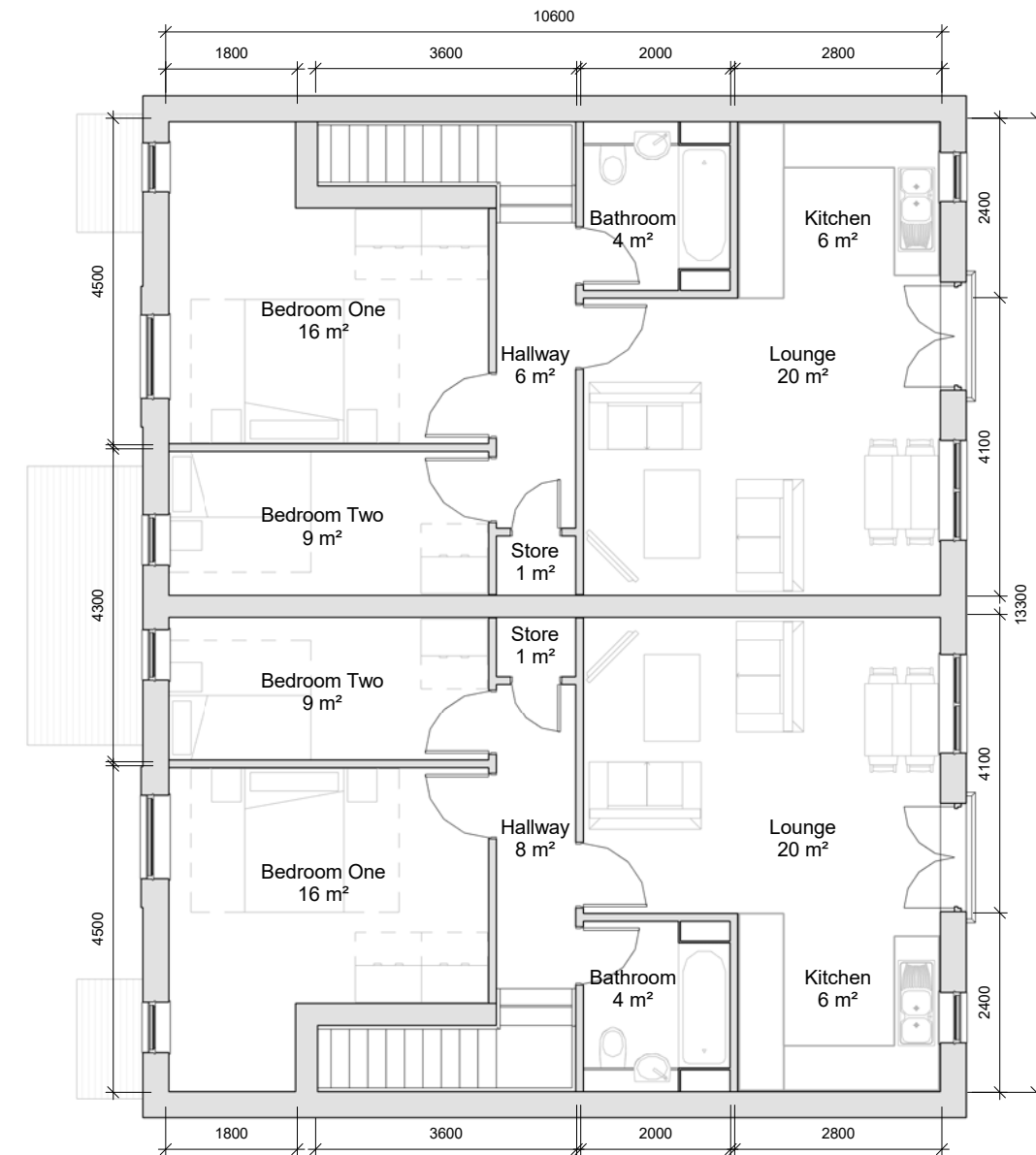


Ground Floor Apartments
 1 : 100



First Floor Apartments
 1 : 100

Additional Information:
Chastleton Block B Area Schedule

Apartment:	Area (Metric):	Area (Imperial):
Apt. Type B	65.092 m ²	700.649 ft ²
Apt. Type C	70.376 m ²	757.519 ft ²
Grand total: 4	270.936 m ²	2916.330 ft ²

Project:
 Chipping, Land at Church Raik

Client:
 Chipping Homes Limited

Drawing:
 Chastleton Block B Plans Overview

Drawn: LJ	Approved: RB	Date: 02/01/17
Scale: 1 : 100	Size: A3	Rev:
Status: Planning		

MillsonAssociates
 Innovative Design, Technical Excellence

Byron House 0161 228 0558
 10-12 Kennedy St www.millsonassociates.co.uk
 Manchester M2 4BY info@millsonassociates.co.uk

Project Number: 2205 Drawing Number: CHP - MA - 00 - ZZ - DR - A - 0702
 Project - Origin - Zone - Level - Type - Role - Number

Rev	Revision History	By	Date