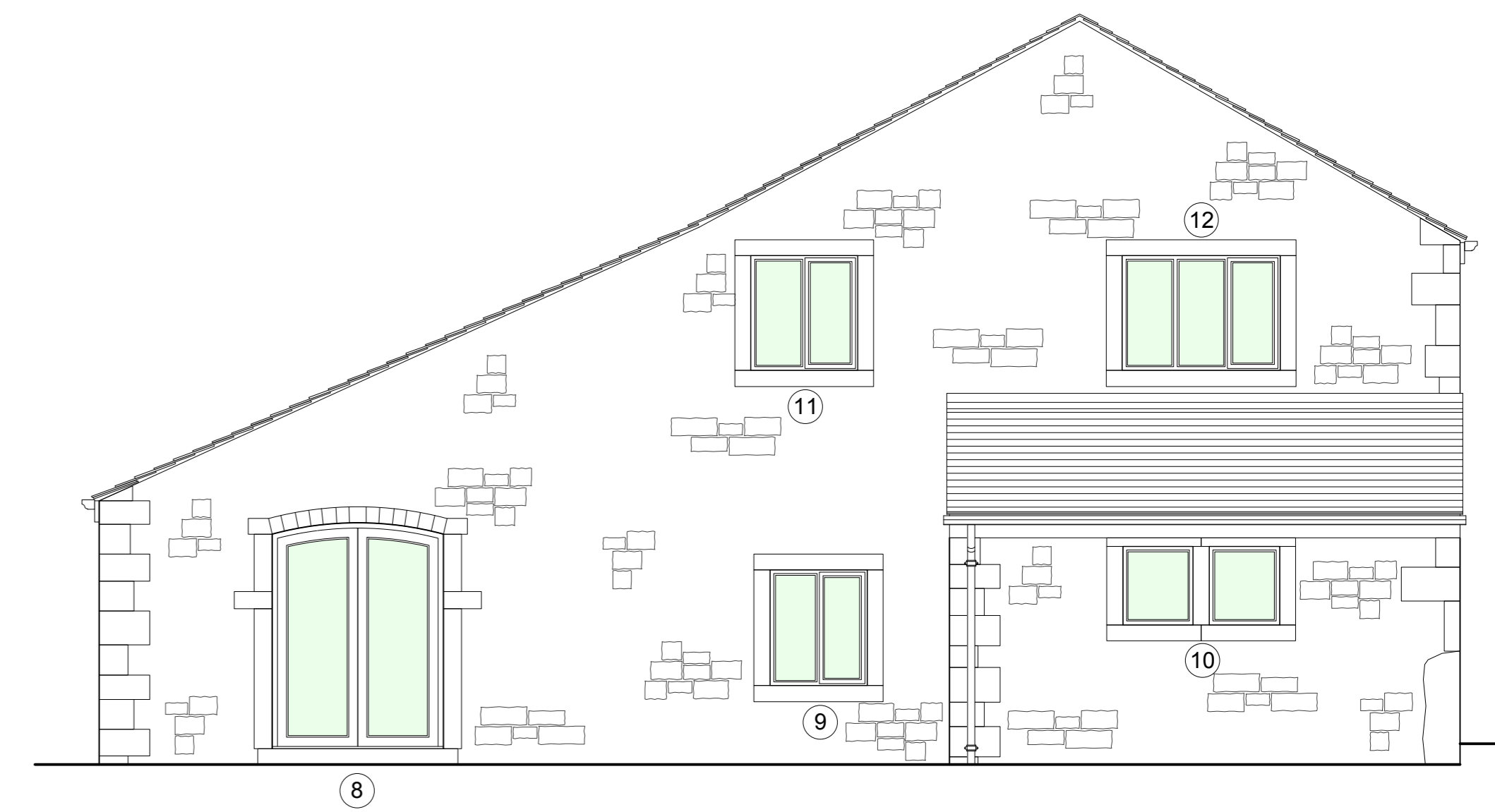
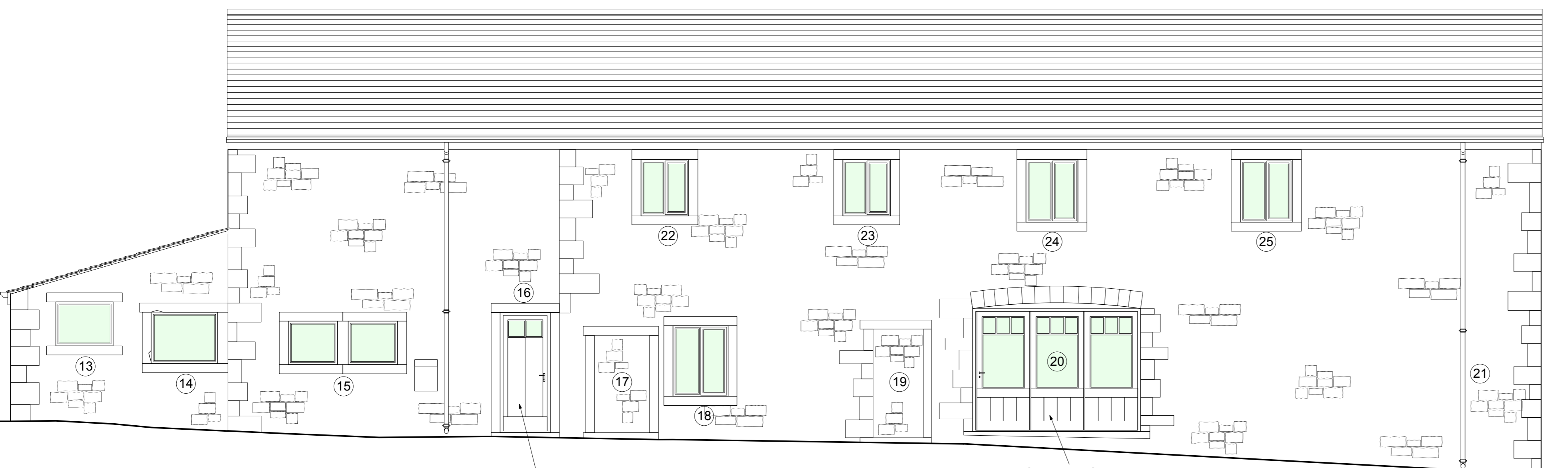




Front Elevation (North West)



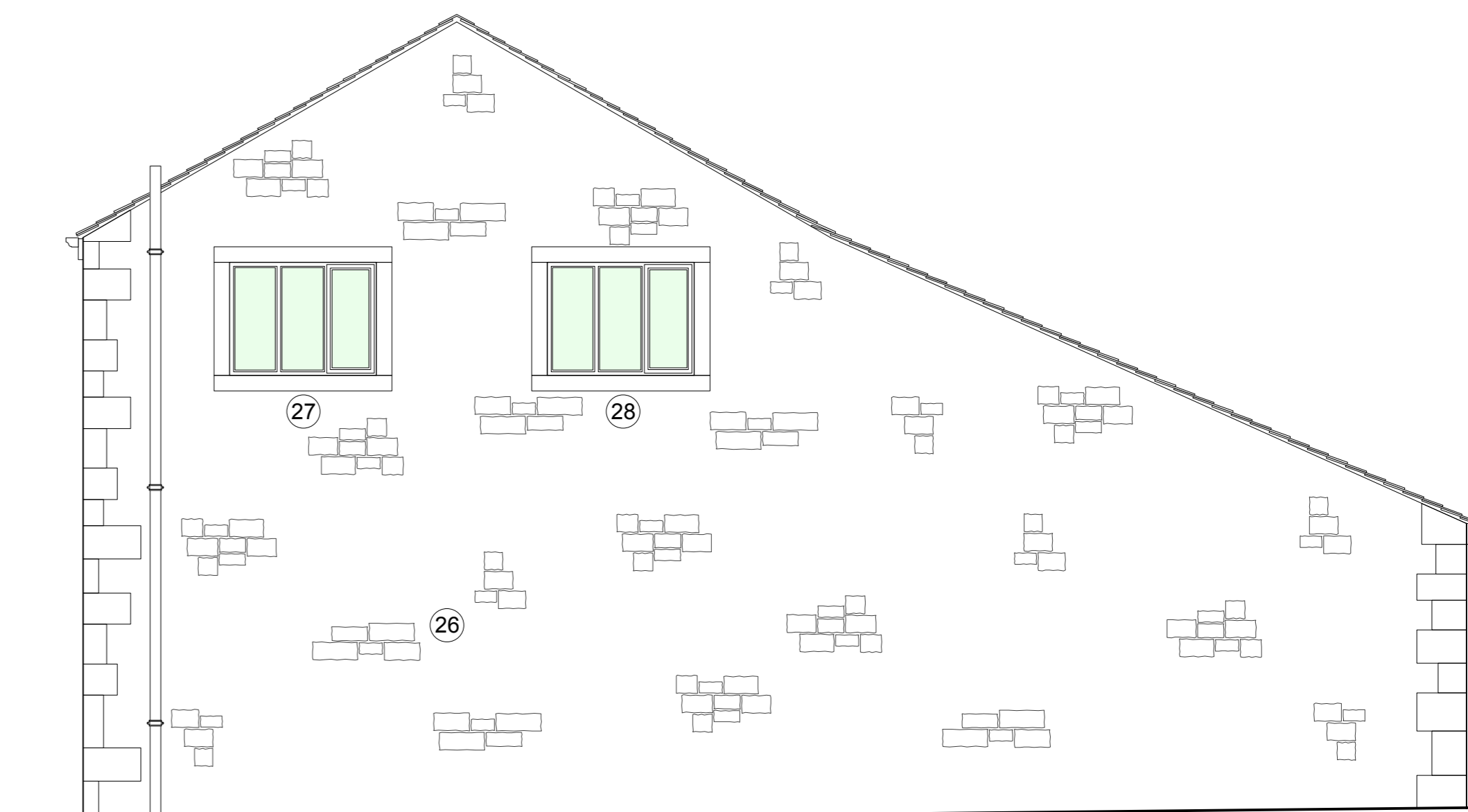
Gable Elevation (South West)



Rear Elevation (South East)

Timber framed, vertical boarded door in existing structural opening.

Timber framed, half-glazed and boarded, sliding folding doors in existing arch topped structural opening.



Gable Elevation (North East)

**Schedule of variations from drawings ref: W120/5 (dated Oct. 1998) and W120/11 (dated May 1999), approved 28 Jan 2000, Ref. 3990447P.**

1. Reduced number of roof windows and positions amended.
2. Window pattern amended and material changed from timber to aluminium frames.
3. Ditto.
4. Style changed from half-glazed double doors, to single solid door, with a glazed panel to either side.
5. Window pattern amended and material changed from timber to aluminium frames.
6. Ditto.
7. Window omitted.
8. Style changed from half-glazed double doors with a level head, to full-height glazed double doors in an arched opening.
9. Window pattern amended and material changed from timber to aluminium frames.
10. Window pattern amended, with central stone mullion added and material changed from timber to aluminium frames.
11. Window pattern amended and material changed from timber to aluminium frames.
12. Window pattern amended, with central stone mullion added and material changed from timber to aluminium frames.

13. Window pattern amended and material changed from timber to aluminium frames.
14. Window installed in place of door, with lower half of opening infilled in stonework.
15. Window pattern amended, with central stone mullion added and material changed from timber to aluminium frames.
16. Door installed in place of window, in existing opening.
17. Door omitted and opening infilled.
18. Window installed in adapted original opening.
19. Window omitted and door opening infilled.
20. Folding doors installed with arched head instead of flat.
21. Window omitted and door opening infilled.
22. Window pattern amended and material changed from timber to aluminium frames.
23. Ditto.
24. Ditto.
25. Ditto.
26. Window omitted.
27. Window pattern amended and material changed from timber to aluminium frames. Opening size increased.
28. Window pattern amended and material changed from timber to aluminium frames.

Existing windows, were installed circa 2000, as double-glazed units in aluminium frames. Existing doors were installed as vertical timber boarded, solid doors in timber frames, with glazed panels as shown.

Rev	Date	Description
A	20.02.17	Amended to show actual window and door installation, circa 2000, as being different from original proposals drawings, W120/5 - Existing and Proposed Gable Elevations (dated Oct. 1998) and W120/11 - Proposed Front and Rear Elevations (dated May 1999), by R. T. Holcroft and Associates.

**Barnsteads Barn**  
Waddington Road, West Bradford

Existing Elevations to Barn

Drwg. No.: 2329.E.02 Rev.: A

Date: Nov '16 Scale: 1:50@A1

**IWA Architects**

Waterloo Mill, Waterloo Road, Clitheroe, Lancashire, BB7 1LR.  
t: +44 (0) 1200 423487  
f: +44 (0) 1200 458278  
e: admin@iwaarchitects.co.uk  
w: www.iwaarchitects.co.uk