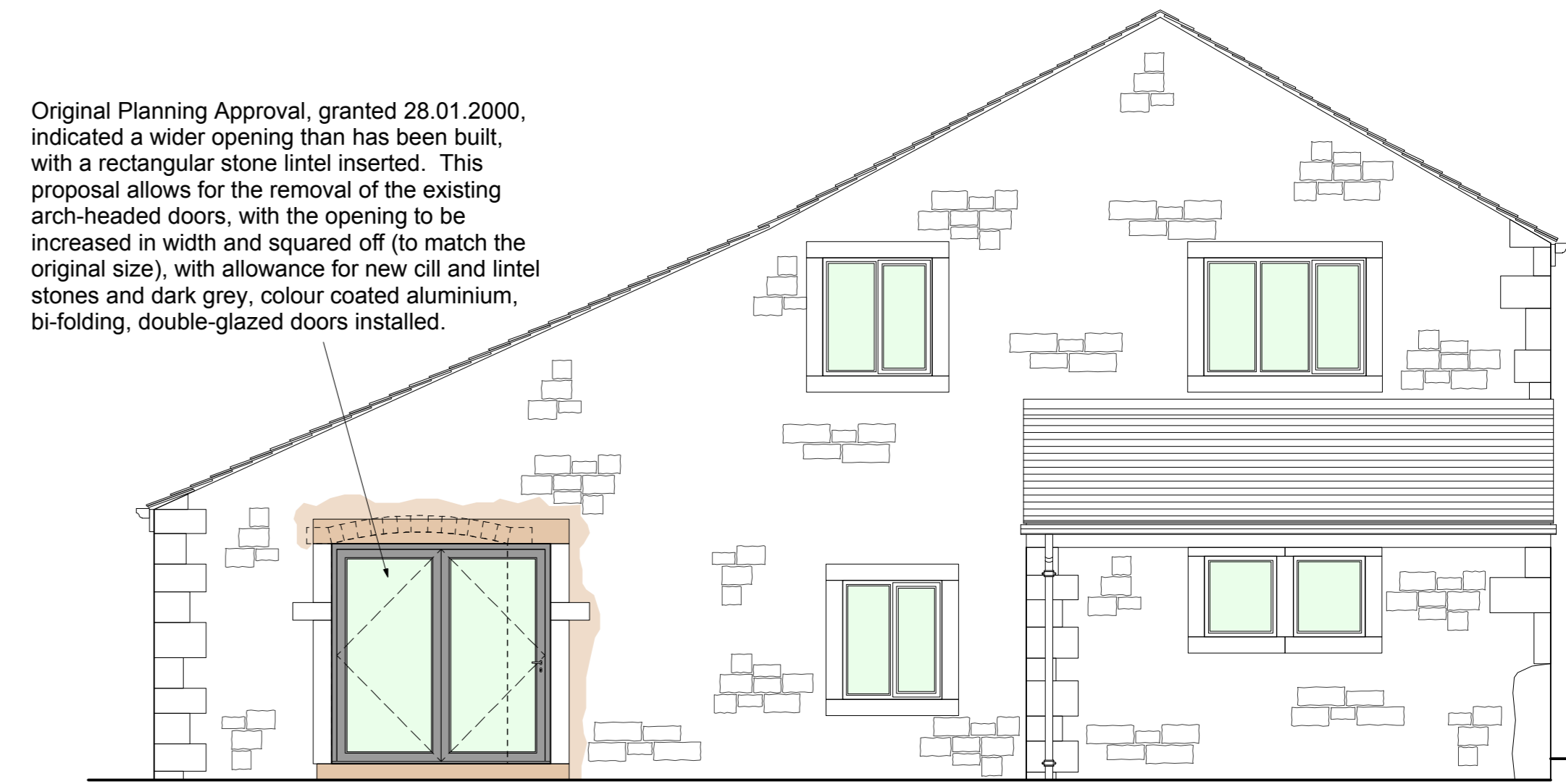




Front Elevation (North West)



Original Planning Approval, granted 28.01.2000, indicated a wider opening than has been built, with a rectangular stone lintel inserted. This proposal allows for the removal of the existing arch-headed doors, with the opening to be increased in width and squared off (to match the original size), with allowance for new cill and lintel stones and dark grey, colour coated aluminium, bi-folding, double-glazed doors installed.

Gable Elevation (South West)



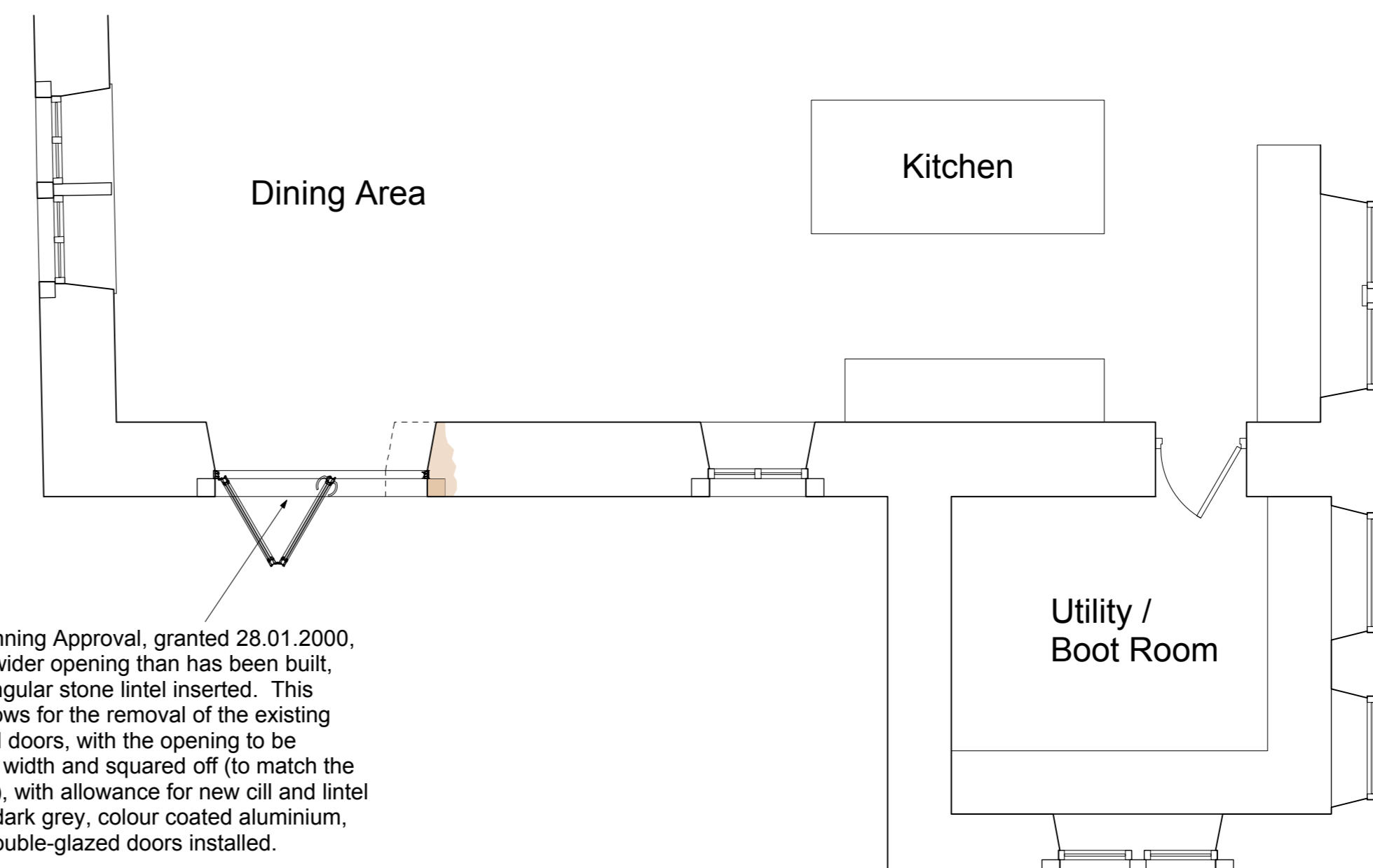
Existing timber door and frame removed and opening fitted with colour coated (dark grey / anthracite, to match existing windows and doors), aluminium framed, double-glazed door. **Work already undertaken and being applied for retrospectively in this application.**

Existing sliding folding timber doors and frame removed, with the opening head squared off with new lintel and dressed stone head and fitted with colour coated (dark grey / anthracite, to match existing windows and doors), aluminium framed, double-glazed, bi-folding doors. **Work already undertaken and being applied for retrospectively in this application.**

Rear Elevation (South East)



Gable Elevation (North East)

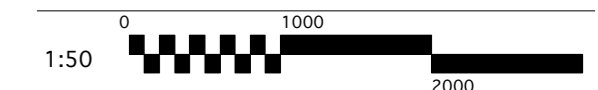


Original Planning Approval, granted 28.01.2000, indicated a wider opening than has been built, with a rectangular stone lintel inserted. This proposal allows for the removal of the existing arch-headed doors, with the opening to be increased in width and squared off (to match the original size), with allowance for new cill and lintel stones and dark grey, colour coated aluminium, bi-folding, double-glazed doors installed.

Part Ground Floor Plan

This drawing is the property of IWA Architects. Copyright is reserved by them and the drawing is issued on condition that it is not copied either wholly or in part without the consent in writing of IWA Architects.

Dimensions should not be scaled. All dimensions to be checked on site by the contractor before commencement of the relevant part of the work.



Rev	Date	Description
C	20.02.17	Amended to show omission of new door to Utility / Boot Room and works already undertaken to be applied for retrospectively, in accordance with Planning Officer's comments.
B	14.12.16	Bi-folding door handed and new door to Utility / Boot Room amended from timber to aluminium frame.
A	08.12.16	Amended bi-folding door width shown.

Barnsteads Barn
Waddington Road, West Bradford

Proposed Elevations and Part
Ground Floor Plan to Barn

Drwg. No.: 2329.P.02 Rev.: C

Date: Nov '16 Scale: 1:50@A1

IWA Architects

Waterloo Mill, Waterloo Road, Clitheroe, Lancashire, BB7 1LR.
t: +44 (0) 1200 423487
f: +44 (0) 1200 458278
e: admin@iwaarchitects.co.uk
w: www.iwaarchitects.co.uk