

TREE SURVEY



Garden to the front of 'Lyndhurst' Chatburn

Tree Works Application - Proposed works
to trees in a Conservation Area

Job No. 112 - 03.05.2017



Holden Clough Nursery

Holden, Clitheroe, Lancashire BB7 4PF

T: 01200 447615

E: info@holdencloughnursery.com

W: www.holdencloughnursery.com

INTRODUCTION

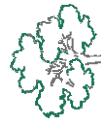
Lyndhurst is a detached house located at the eastern end of Chatburn. The property comprises of a long drive edged with an overgrown wooded area, formerly an orchard. Located centrally is a mature Horse Chestnut specimen and the rest of the garden is laid to grass.

ANALYSIS

The wooded area is in a over grown state with many of the trees infested in ivy or showing signs of die back. The Horse Chestnut in the centre of the site has been monitored since 2014 and is showing progressive signs of Bleeding Canker. Black tar bleeds are becoming evident up the trunk in several places. The tree is of a sound state however has a limited lifespan of 5-10 years due to the terminal nature of the disease

PROPOSAL

To remove the infected Horse Chestnut, retain the Black Cherries and Holly behind the Chestnut, thin out the Holly hedge to the east of the site and remove the remaining poor overcrowded specimens and replant with a mix of fruit and dwarf ornamental trees.



Holden Clough Nursery



Chatburn Conservation Area Map 2006



External symptoms of Bleeding Canker lesions caused by *Pseudomonas syringae* pv *aesculi* noted on 4 of the 5 main bows of the tree

SPECIES LIST

Botanical	Common	Description of works
T1 Aesculus hippocastanum	Horse Chestnut	Remove due to monitored progression of Bleeding Canker disease since 2014, help reduce the risk of disease spreading in the local area.
T2 Ilex aquifolium	Holly	Retain
T3 Prunus cerasifera 'Nigra'	Black Cherry Plum	Retain
T4 Prunus cerasifera 'Nigra'	Black Cherry Plum	Retain
T5 Malus	Apple	Remove
T6 Malus	Apple	Remove
T7 Malus	Apple	Remove
T8 Malus	Apple	Remove
T9 Malus	Apple	Remove
T10 Ilex aquifolium	Holly	Thin out and remove top to encourage low down growth and trim to shape
T11 Pyrus	Pear	Remove, showing signs of die back
T12 Malus	Apple	Remove
T13 Malus	Apple	Remove
T14 Prunus domestica	Plum	Remove
T15 Prunus domestica	Plum	Remove
T16 Prunus domestica	Plum	Remove
T17 Prunus domestica	Plum	Remove
T18 Prunus domestica	Plum	Remove
T19 Prunus domestica	Plum	Remove
T20 Prunus domestica	Plum	Remove
T21 Sambucus	Elder	Remove
T22 Sambucus	Elder	Remove
T23 Malus	Apple	Remove
T24 Prunus laurocerasus	Common Laurel	Remove
T25 Syringa 'Alba'	White Lilac	Remove
T26 Ilex aquifolium	Holly	Remove
T27 Syringa 'Alba'	White Lilac	Remove
T28 Prunus domestica	Plum	Remove



Holden Clough Nursery

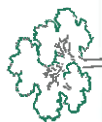
Garden to the front of 'Lyndhurst'

REPLANTING LIST

Botanical	Common	Description of works
T2 Ilex aquifolium	Holly	Existing
T3 Prunus cerasifera 'Nigra'	Black Cherry Plum	Existing
T4 Prunus cerasifera 'Nigra'	Black Cherry Plum	Existing
T11 Ilex aquifolium	Holly	Thin out, Remove top
N1 Sorbus cashmiriana	Mountain Ash	Replant
N2 Acer palmatum 'Bloodgood'	Japanese Acer	Replant
N3 Malus 'Profusion'	Crab Apple	Replant
N4 Acer brilliantissimum	Sycamore	Replant
N5 Parrotia persica	Persian Ironwood	Replant
N6 Prunus 'Pink Perfection'	Cherry	Replant
N7 Prunus 'Merryweather'	Damson	Replant
N8 Malus 'Discovery'	Apple	Replant
N9 Prunus domestica	Plum	Replant
N10 Sorbus lutescens	White Beam	Replant
N11 Betula jacquemontii	White Birch	Replant
N12 Liquidambar 'Worplesdon'	Sweet Gum	Replant
N13 Cercidiphyllum japonicum	Candyfloss Tree	Replant
N14 Prunus 'Pink Perfection'	Ornamental Cherry	Replant
N15 Carpinus betulus	Hornbeam	Resistant to bleeding canker

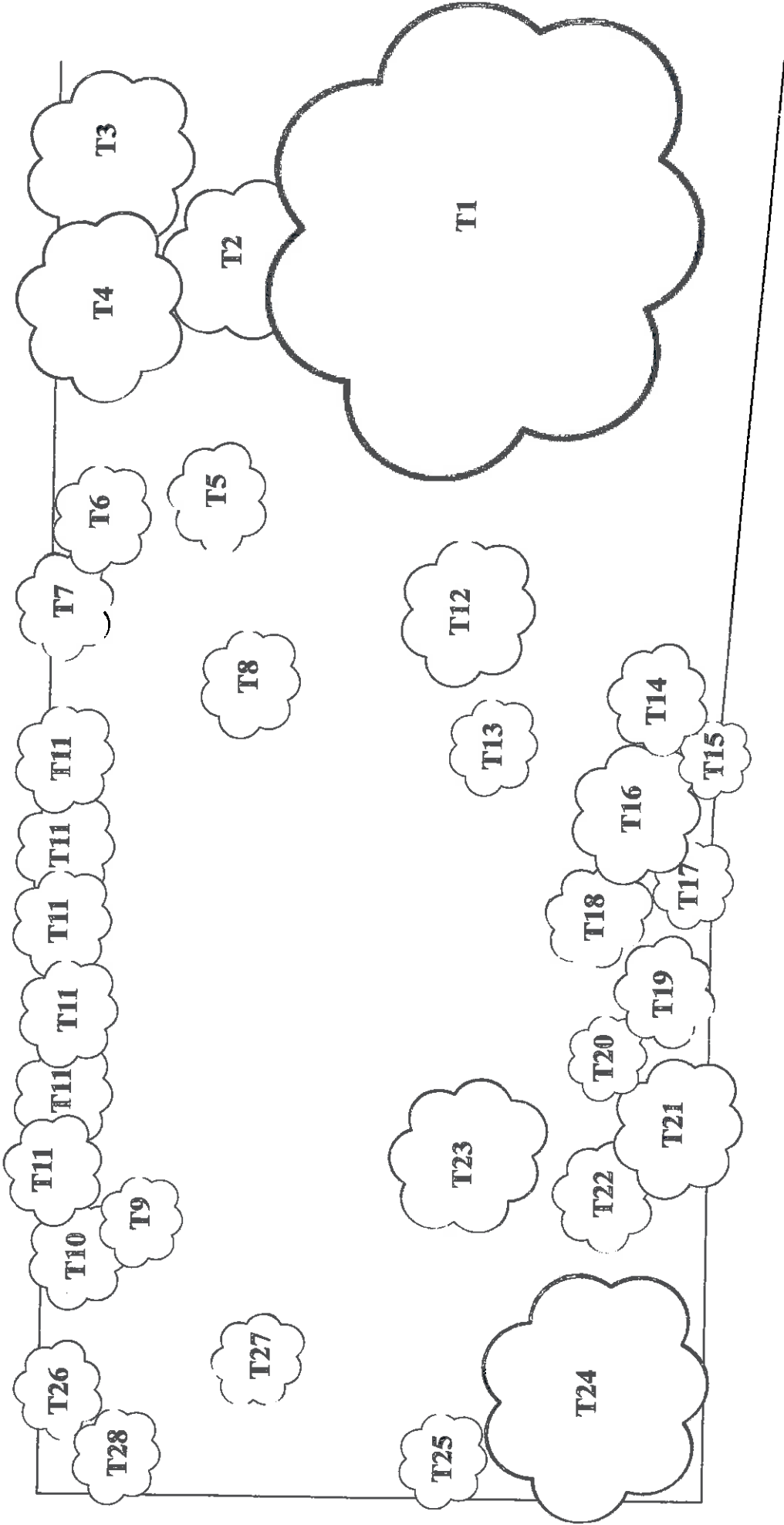
CONCLUSION

Carrying out the proposed works will help rejuvenate a wooded area which is currently in a overgrown state with re planting of species that will help ensure the longevity and future of the woodland. The removal of the Horse Chestnut will reduce the risk of the disease spreading around the local vicinity along with the preservation of the trees behind ensuring privacy is maintained to the neighbouring property

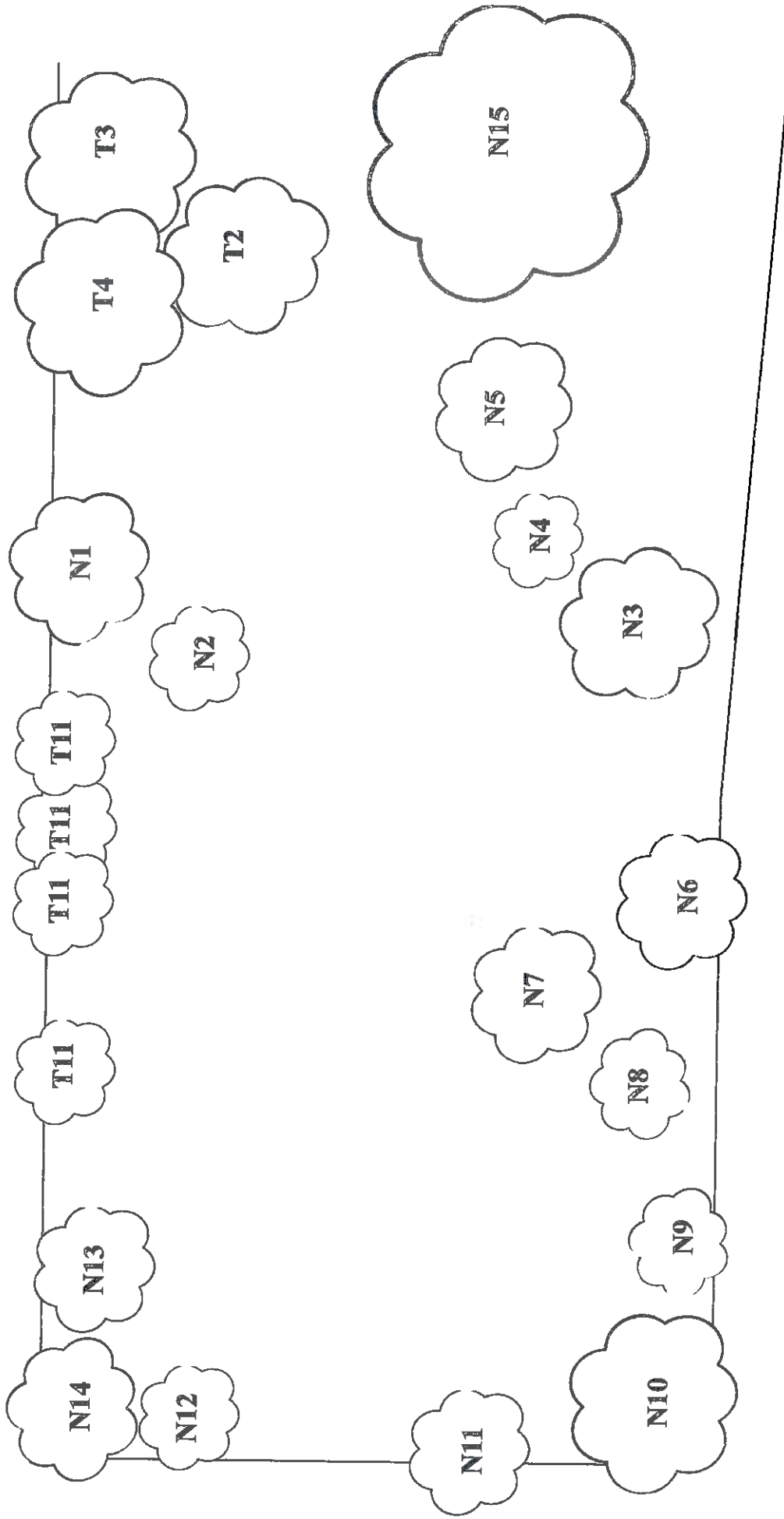


Holden Clough Nursery

EXISTING TREE PLAN



PROPOSED TREE PLAN



Holden Clough Nursery

Garden to the front of 'Lyndhurst'