

320170492P



**PROPOSED FLOODLIGHT APPLICATION**

**AT  
BLACKBURN RUGBY UNION CLUB  
RAMSGREAVE DRIVE**

**DESIGN AND ACCESS STATEMENT**

Job No. 4313

Rev. 1.00\_ May 2017

## 1.0 INTRODUCTION

- 1.1 This Design and Access Statement has been prepared by Sunderland Peacock and Associates Ltd on behalf of Blackburn Rugby Union Club, as part of a full planning application for the proposal of new floodlights to be positioned to an existing rugby pitch which is located within the Ribbles Valley Borough Council boundary.
- 1.2 This report is in support of the proposal which will provide an additional floodlit rugby pitch for the rugby club.

## 2.0 EXISTING

- 2.1 Blackburn Rugby Club has a proud history. Founded in 1877 it has sent out teams to play rugby and will celebrate its 140th anniversary. The Club moved to its present home, Ramsgreave Drive in 1936. Since that time the Club has developed five pitches and a club house. It has won many honours including the Lancashire Cup and has produced players that have gone on to represent Lancashire and many senior and now professional teams. The Club puts out 3 senior teams, with the 1st XV currently competing in North 1 West League.

The Club's mini and youth section was created within the last twenty years and since that time has supported the participation of over 2000 young people, with girls joining boys in recent times. The mini and youth section is now so popular that the Club's facilities are stretched to breaking point each Sunday and substantial investment will be necessary to provide the range of facilities needed for future generations. The Club is run by its members for its members with a focus on participation and enjoyment.

- 2.2 The site boundary stretches between two planning authorities with three pitches, access point and clubhouse located in Blackburn with Darwen district and two pitches in Ribbles Valley. The boundary is an existing brook which splits the site as illustrated in the adjacent image.
- 2.3 The proposed site is located to the north west section of the overall boundary where two existing pitches are located. This application relates to one of these pitches which is accessed via a small single access track via an existing bridge from the Blackburn with Darwen side of the brook.
- 2.4 The surrounding land to the north, east and west mainly consists of farmland. The land has a steep gradient to the north up to Ramsgreave Road which the pitches have been formed from numerous years ago.



\* Fig. 01 - Image demonstrating the existing council boundaries.



< Fig. 02  
Photograph from the west showing the proposed pitch and clubhouse in the background

### 3.0 THE PROPOSAL

- 3.1 The proposal is intended to provide an extended facility for the rugby club to allow an additional playing space to be used to train and play matches in the winter months.
- 3.2 The proposal provides a total of 8no, 15m high masts to be fitted with 2no light fittings. This has been calculated by Halliday Lighting whose information is submitted in support of this information which will allow the existing 100m (L) x 65m (w) rugby pitch to be fully light to meet recreational ball sport standards.
- 3.3 This application is supported by a proposed drawings, floodlight impact study, lighting information and ecological report.
- 3.4 The impact on the surrounding areas is believed to be low. The site is currently used for rugby use with an existing pitch of the club's currently having floodlights in the BwD site area. The integration of this proposal will have a limited affect on surrounding properties especially to the north where the existing topography rises up towards Ramgreave Road further into the Ribble Valley District.
- 3.5 Noise impact will be low as the pitch use will not change but be used slightly more frequently.

### 4.0 ACCESS

- 4.1 The existing site access will remain as from the Blackburn with Darwen. The proposed site will be continued to be accessed via a private track over the brook from the south.

### 5.0 CONCLUSION

In conclusion, the proposed scheme has been designed to sensitively create a floodlit rugby pitch to allow Blackburn Rugby Club to provide additional facilities for the growing membership of the club.

The application is supported by an experience lighting company review and light spillage drawing which demonstrates a minimal visual impact of the proposed scheme.

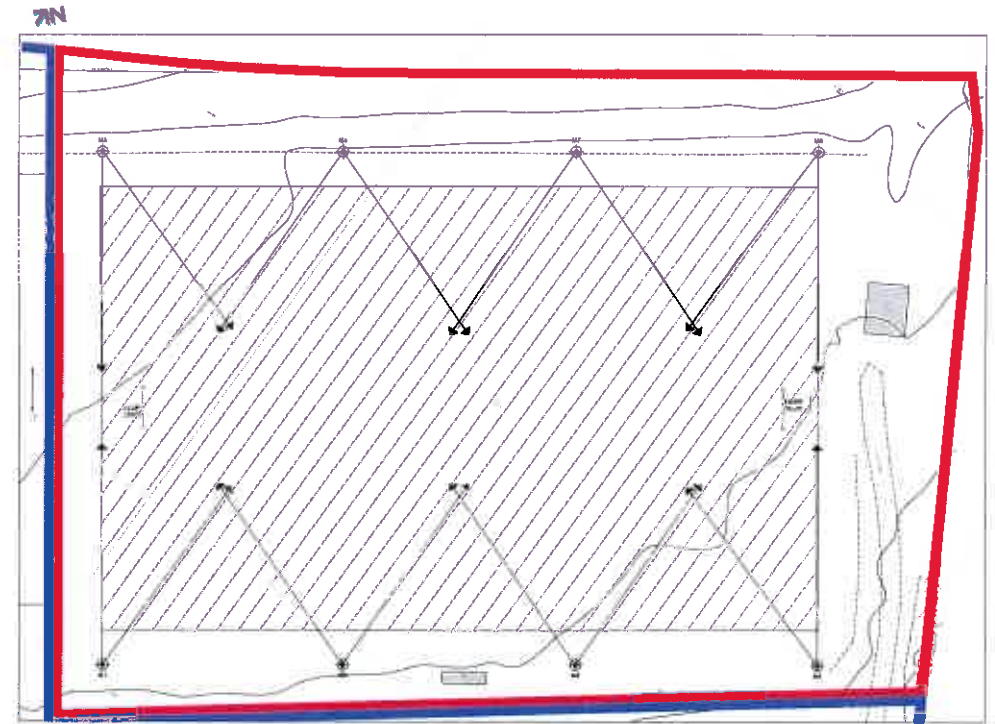


Fig. 03 - Section of proposed drawing illustrating pitch and floodlight positions.

**KEY**

- [Hatched Area] MATCHED AREA INDICATES EXISTING PITCH TO BE FLOOD LIT
- [Symbol with crosshair] MASTS ALTERNATE THE POSITION OF MASTS TO BE WITH BEAMS BACK TOWARD THEM AND BEYOND ADJACENT PITCHES
- [Symbol with crosshair] BEAMS TO BE DIRECTIONAL LIGHTING IS DETERMINED FOR FURTHER INFORMATION BY THE LIGHTING INFORMATION



PROPOSED FLOODLIGHT APPLICATION  
AT  
BLACKBURN RUGBY UNION CLUB  
RAMSGREAVE DRIVE  
DESIGN AND ACCESS STATEMENT