



Tree Survey & Arboricultural Impact Assessment

Lidl, Shawbridge St, Clitheroe, BB7 1LZ

Prepared for:

Lidl UK GmbH
C/o Atmos Consulting

Our Ref: 17/AIA/Ribble V/05

14 June 2017

Tree Solutions Ltd

T: 01244 389114
E: info@tree-solutions.co.uk
W: www.tree-solutions.co.uk

Tree Solutions Ltd Registration in England & Wales Company No 04548951

TREE SURVEY SCHEDULE (BS5837: 2012)

Tree Solutions

Arboricultural Consultants

SITE:	LIDL, SHAWBRIDGE STREET, CLITHEROE, BB7 1LZ
CLIENT:	LIDL UK GMBH C/O ATMOS CONSULTING
BRIEF:	ARBORICULTURAL IMPACT ASSESSMENT

SURVEYOR:	A. HENDERSON
ASSESSMENT DATE:	14 JUNE 2017
VIEWING CONDITIONS:	GOOD
JOB REFERENCE:	17/AIA/RIBBLE V/05

PAGE 1 OF 1

TREE NO. <small>T - Tree G - Group H - Hedge</small>	SPECIES (COMMON NAME)	AGE	HEIGHT (m) + CROWN CLEARANCE/ DIRECTION OF GROWTH (N.S.E.W)	RADIAL CROWN SPREAD (m)				STEM/ MULTI-STEM* DIA.(mm)	VITALITY	COMMENTS	MANAGEMENT	CATEGORY & SUB-CATEGORY GRADING BS 5837	BS 5837 RADIUS (m) RPA (m²)
				N	S	E	W						
T1	Ash	EM	14 3W	0.5	1.5	1.5	4	320	G	<ul style="list-style-type: none"> Crown badly pruned to north in order to clear view to Lidl sign. This has left an asymmetric crown form with excessive end loading liable to fracture if loaded Unattractive tree of little merit E.R.C. ≤10 	<ul style="list-style-type: none"> Remove to accommodate proposed development works Replace with ne specimen trees where indicated 	C2	3.8 46m²
G1	Beech	EM	≤15 1.5W	2	4.5	2	3	≤420	G	<ul style="list-style-type: none"> Linier group at 200mm centres Planted as a hedge and allowed to grow into trees due to lack of any formal management They now appear unkempt and can no longer be pruned/cut to reinstate hedge feature E.R.C. ≤10 	<ul style="list-style-type: none"> As T1 	C2	5 80m²
G2	Ash (5) Sycamore (2) Beech (1)	SM / EM	≤14 4W	2	2	2	2	≤250	M	<ul style="list-style-type: none"> Unattractive trees within restricted linier planting strip with hard standing over primary roots Sycamore self set poles, Ash planted & Beech unmanaged hedge understory E.R.C. ≤10 	<ul style="list-style-type: none"> As T1 	C2	3 28m²

HEADINGS & ABBREVIATIONS

TREE NO.
SPECIES:
AGE RANGE/LIFE STAGE:
HEIGHT:
CROWN SPREAD:
CROWN CLEARANCE & DIRECTION OF GROWTH:
STEM DIA/MULTI-STEM DIA:
VITALITY:
E.R.C. = ESTIMATED REMAINING CONTRIBUTION:
BS 5837 CATEGORY & SUB-CATEGORY GRADING:
BS 5837 RADIUS & BS 5837 RPA:

REFERENCE NUMBER. REFER TO PLAN OR NUMBERED TAGS WHERE APPLICABLE (T = TREE, G = GROUP, H = HEDGE)
COMMON NAME (LATIN NAMES AVAILABLE ON REQUEST)
Y = YOUNG, SM = SEMI MATURE, EM = EARLY MATURE, M = MATURE, PM = POST MATURE
ESTIMATED AND RECORDED IN METRES. APPROXIMATELY 1 IN 10 TREES ARE MEASURED USING A CLINOMETER AND THE REMAINDER ESTIMATED AGAINST THE MEASURED TREES
MAXIMUM CROWN RADIUS MEASURED TO THE FOUR CARDINAL COMPASS POINTS FOR SINGLE SPECIMENS ONLY (MEASUREMENT FOR TREE GROUPS - MAXIMUM RADIUS OF THE GROUP)
HEIGHT IN METERS OF CROWN CLEARANCE ABOVE ADJACENT GROUND LEVEL (TO INFORM ON GROUND CLEARANCE, CROWN/STEM RATIO AND SHADING)
STEM DIAMETER - MEASURED AT APPROXIMATELY 1.5 METRES ABOVE GROUND LEVEL OR A COMBINATION OF STEMS FOR MULTI-STEMMED TREES
A MEASURE OF PHYSIOLOGICAL CONDITION. D = DEAD, MD = MORIBUND, P = POOR, M = MODERATE, G = GOOD
RELATIVE USEFUL LIFE EXPECTANCY (YEARS)
A = HIGH QUALITY AND VALUE, B = MODERATE QUALITY AND VALUE, C = LOW QUALITY AND VALUE, U = UNSUITABLE FOR RETENTION (SUB-CATEGORY REFERS TO ARBORICULTURAL, LANDSCAPE AND CULTURAL/CONSERVATION VALUES)
PROTECTIVE DISTANCE - RADIUS FROM THE CENTRE OF THE STEM TO THE LINE OF TREE PROTECTION (CONSTRUCTION EXCLUSION ZONE - CEZ) AND PROTECTIVE BARRIER ROOT PROTECTION AREA - BS 5837 (2012) ANNEX D (THE RECOMMENDATIONS STATE THAT THE RPA SHOULD BE CAPPED AT 707 M²) NOTE - ALL CALCULATIONS ROUNDED TO NEAREST DECIMAL

Table 1 Cascade chart for tree quality assessment

Category and definition	Criteria (including subcategories where appropriate)			Identification on plan
Trees unsuitable for retention (see Note)				
Category U Those in such a condition that they cannot realistically be retained as living trees in the context of the current land use for longer than 10 years	<ul style="list-style-type: none">Trees that have a serious, irremediable, structural defect, such that their early loss is expected due to collapse, including those that will become unviable after removal of other category U trees (e.g. where, for whatever reason, the loss of companion shelter cannot be mitigated by pruning)Trees that are dead or are showing signs of significant, immediate, and irreversible overall declineTrees infected with pathogens of significance to the health and/or safety of other trees nearby, or very low quality trees suppressing adjacent trees of better quality <p><i>NOTE Category U trees can have existing or potential conservation value which it might be desirable to preserve; see 4.5.7.</i></p>			See Table 2
	1 Mainly arboricultural qualities	2 Mainly landscape qualities	3 Mainly cultural values, including conservation	
Trees to be considered for retention				
Category A Trees of high quality with an estimated remaining life expectancy of at least 40 years	Trees that are particularly good examples of their species, especially if rare or unusual; or those that are essential components of groups or formal or semi-formal arboricultural features (e.g. the dominant and/or principal trees within an avenue)	Trees, groups or woodlands of particular visual importance as arboricultural and/or landscape features	Trees, groups or woodlands of significant conservation, historical, commemorative or other value (e.g. veteran trees or wood-pasture)	See Table 2
Category B Trees of moderate quality with an estimated remaining life expectancy of at least 20 years	Trees that might be included in category A, but are downgraded because of impaired condition (e.g. presence of significant though remediable defects, including unsympathetic past management and storm damage), such that they are unlikely to be suitable for retention for beyond 40 years; or trees lacking the special quality necessary to merit the category A designation	Trees present in numbers, usually growing as groups or woodlands, such that they attract a higher collective rating than they might as individuals; or trees occurring as collectives but situated so as to make little visual contribution to the wider locality	Trees with material conservation or other cultural value	See Table 2
Category C Trees of low quality with an estimated remaining life expectancy of at least 10 years, or young trees with a stem diameter below 150 mm	Unremarkable trees of very limited merit or such impaired condition that they do not qualify in higher categories	Trees present in groups or woodlands, but without this conferring on them significantly greater collective landscape value; and/or trees offering low or only temporary/transient landscape benefits	Trees with no material conservation or other cultural value	See Table 2



Photo 1 – Decay cavity at base of Beech tree to south of G1 & adjacent to road/footpath



Photos 2 - Southern end of G1 showing restricted rooting environment & confined space to develop



Photos 3 - Stems of G1 at 200mm centres as originally planted as a hedge



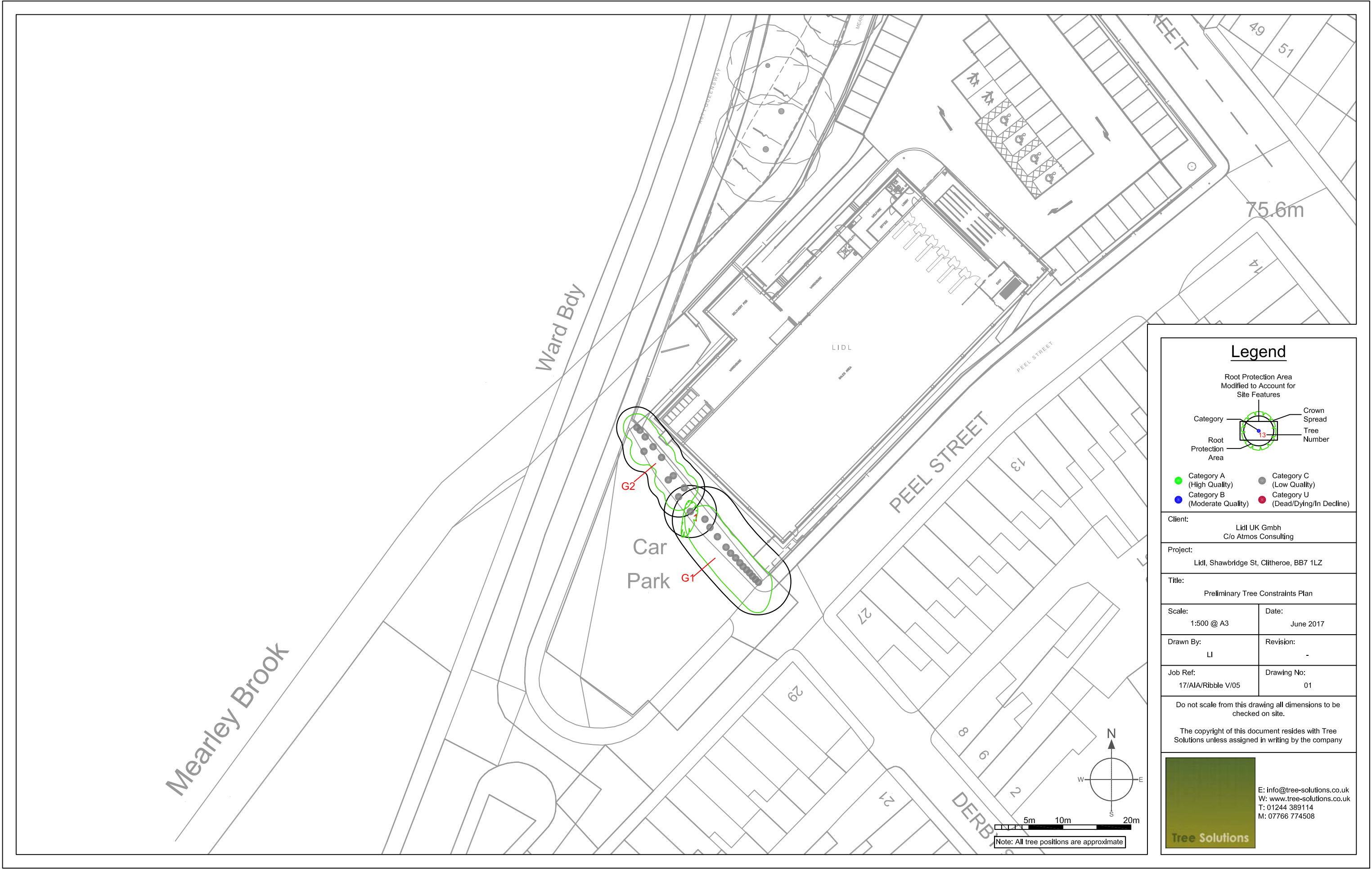
Photos 4 - View of trees from existing car park to west showing pruning to clear view to Lidl sign



Photos 5 - View of G2 from north - note severely restricted growing conditions & high pruning to provide easement to building



Photos 6 - View of trees from Peel St to NW - it is clear that they have outgrown their restricted liner planting bed that was intended for a hedge & not trees



Legend

Root Protection Area
Modified to Account for
Site Features

Category

Root Protection Area

Crown Spread

Tree Number

13

Category A
(High Quality)

Category B
(Moderate Quality)

Category C
(Low Quality)

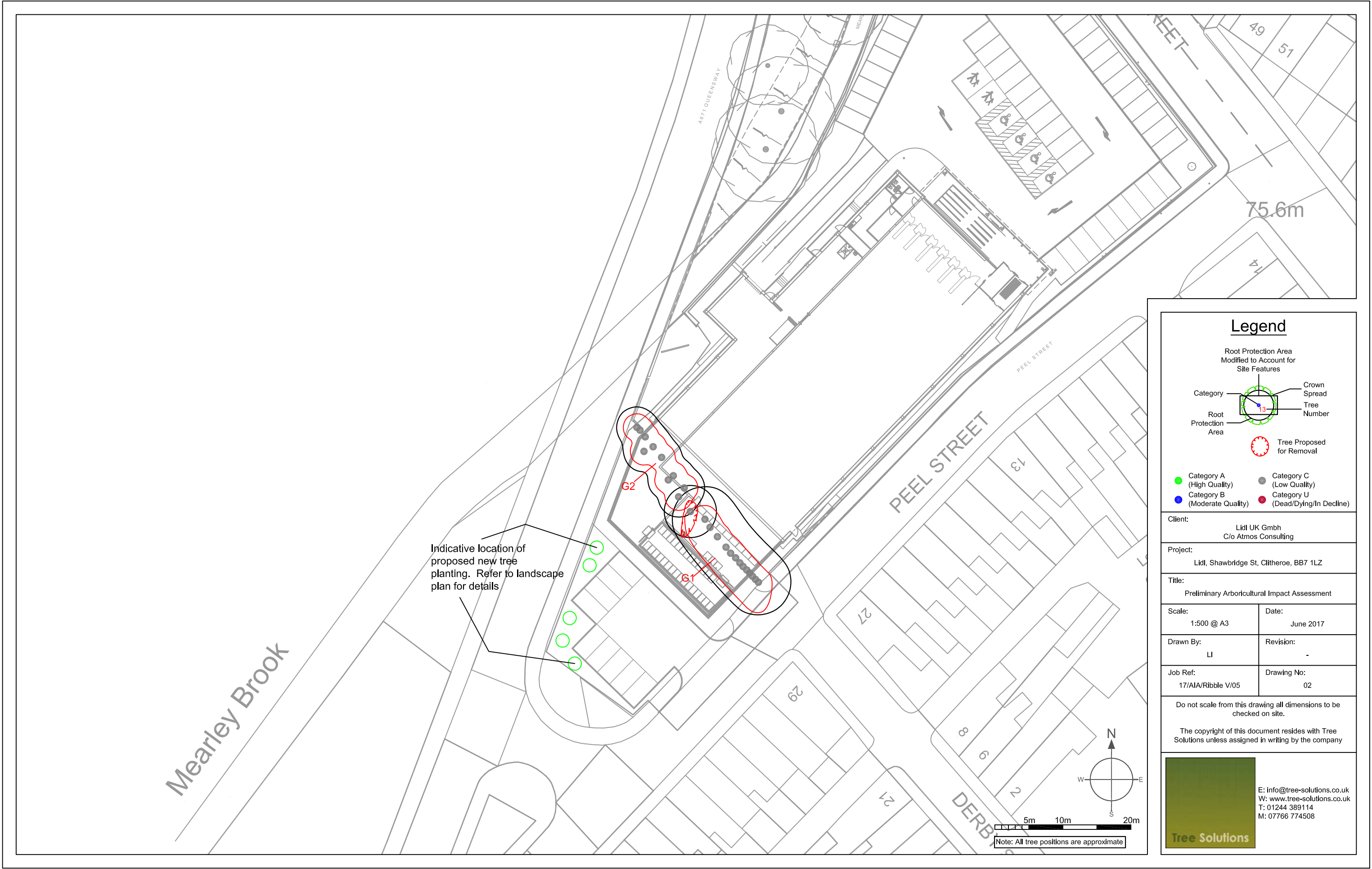
Category U
(Dead/Dying/In Decline)

Client: Lidl UK GmbH C/o Atmos Consulting	
Project: Lidl, Shawbridge St, Clitheroe, BB7 1LZ	
Title: Preliminary Tree Constraints Plan	
Scale: 1:500 @ A3	Date: June 2017
Drawn By: LI	Revision: -
Job Ref: 17/AIA/Ribble V/05	Drawing No: 01

Do not scale from this drawing all dimensions to be checked on site.

The copyright of this document resides with Tree Solutions unless assigned in writing by the company

E: info@tree-solutions.co.uk
W: www.tree-solutions.co.uk
T: 01244 389114
M: 07766 774508



Legend

- Root Protection Area
Modified to Account for
Site Features
- Category
- Root
Protection
Area
- Crown
Spread
- Tree
Number
- Tree Proposed
for Removal
- Category A
(High Quality)
- Category B
(Moderate Quality)
- Category C
(Low Quality)
- Category U
(Dead/Dying/In Decline)

Client: Lidl UK GmbH C/o Atmos Consulting	
Project: Lidl, Shawbridge St, Clitheroe, BB7 1LZ	
Title: Preliminary Arboricultural Impact Assessment	
Scale: 1:500 @ A3	Date: June 2017
Drawn By: LI	Revision: -
Job Ref: 17/AIA/Ribble V/05	Drawing No: 02

Do not scale from this drawing all dimensions to be checked on site.

The copyright of this document resides with Tree Solutions unless assigned in writing by the company



E: info@tree-solutions.co.uk
W: www.tree-solutions.co.uk
T: 01244 389114
M: 07766 774508