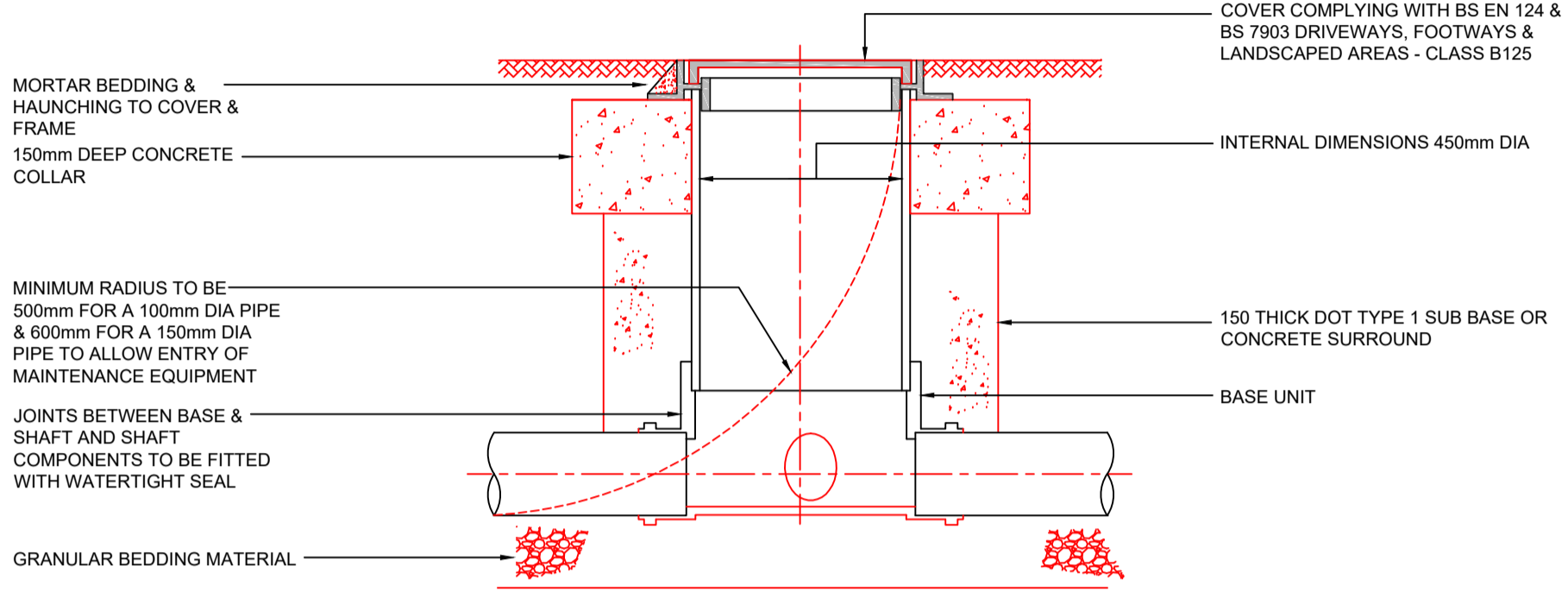


**TYPICAL INSPECTION CHAMBER DETAIL - TYPE 4
(FLEXIBLE MATERIAL DETAIL)**

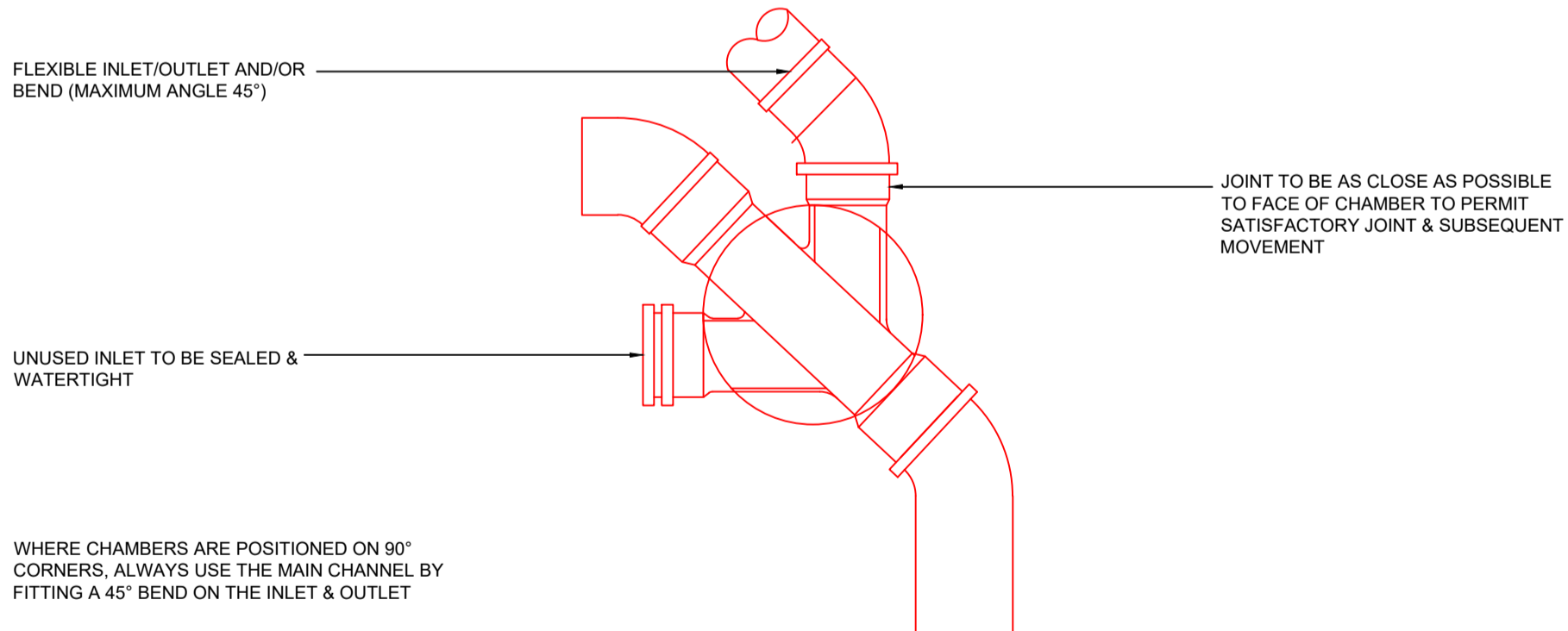
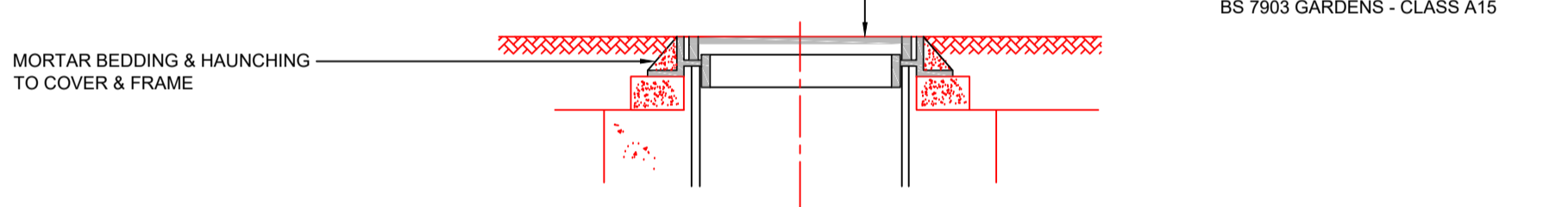
MAXIMUM DEPTH FROM COVER LEVEL TO SOFFIT OF
PIPE 2m, NON-ENTRY

PLASTIC CHAMBERS & RINGS SHALL COMPLY
WITH BS EN 13598-1 & BS EN 13598-2 OR HAVE
EQUIVALENT INDEPENDENT APPROVAL

SITED IN DRIVEWAYS/PAVED AREAS



SITED IN DOMESTIC GARDENS



0	26/02/18	First Issue	JJ	BF	BF
Rev	Date	Description	Drn	Chk	App

OAKMERE HOMES

CHATBURN ROAD,
CLITHEROE

DRAINAGE DETAILS
SHEET 2 OF 2

SCALE: NTS @A2 | REV 0
18376-531

CTC Infrastructure Ltd
7 Hall Road, Fulwood, Preston, PR2 9QD

Mobile: 07970 265334
Email: r.e.ford@virginmedia.com
Company number: 9620365
VAT Reg. 215 5638 12