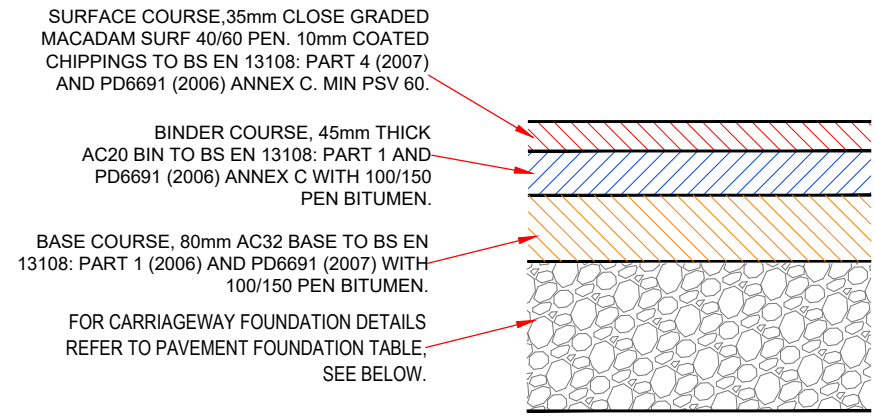
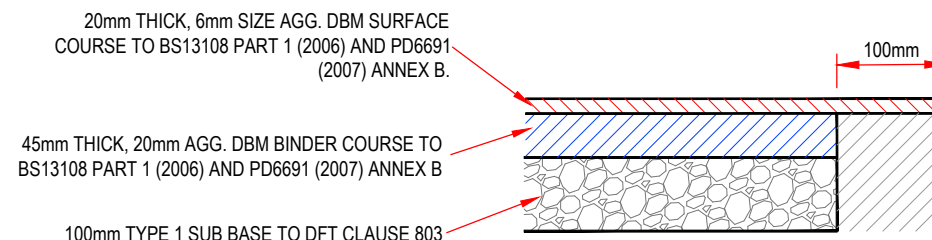


NOTES

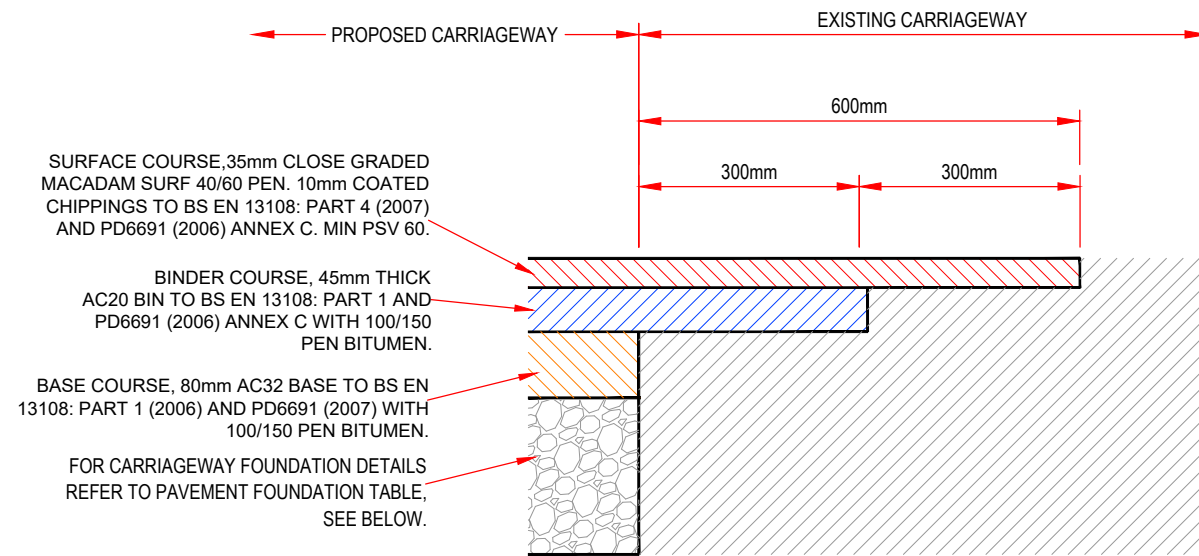
1. ANY DISCREPANCIES ON THIS DRAWING ARE TO BE BROUGHT TO THE ATTENTION OF CTC INFRASTRUCTURE.
2. DRAWING IS IN MILLIMETRES UNLESS OTHERWISE STATED.
3. ALL DIMENSIONS ARE TO BE CHECKED BEFORE COMMENCEMENT OF WORK ON SITE.
4. TACK COAT TO BE PROVIDED BETWEEN EACH BITUMINOUS LAYER



TYPICAL CARRIAGEWAY CONSTRUCTION DETAIL (C1)
SCALE 1:10



TYPICAL FOOTWAY CONSTRUCTION TIE DETAIL (F1)
SCALE 1:10



TYPICAL CARRIAGEWAY TIE IN DETAIL (T1)
SCALE 1:10

CBR TABLE:

CBR	<2%	2%	3%	4%	5%	15%	>15%
CAPPING (mm)	600	450	350	300	250	150	0
SUB BASE (mm)	150	150	150	150	150	150	150
TOTAL THICKNESS (mm)	750	600	500	450	400	300	150
SUB BASE DESIGN ONLY (TOTAL THICKNESS (mm))	N/A	N/A	300	260	225	300	150

REFER TO DMRB VOL 7 EC 2 PART 2 HD 25/94
FIG 3.1 FOR MORE DETAILS ON CBR TABLE

0	26/02/18	First Issue	JJ	BF	BF
Rev	Date	Description	Drn	Chk	App

CTC Infrastructure Ltd
7 Hall Road, Fulwood, Preston, PR2 9QD

Mobile: 07970 265334
Email: r.e.ford@virginmedia.com
Company number: 9620365
VAT Reg. 215 5638 12

CHATBURN ROAD,
CLITHEROE

STANDARD DETAILS

DETAILED DESIGN

SCALE: NTS @ A3

18376-730

REV 0