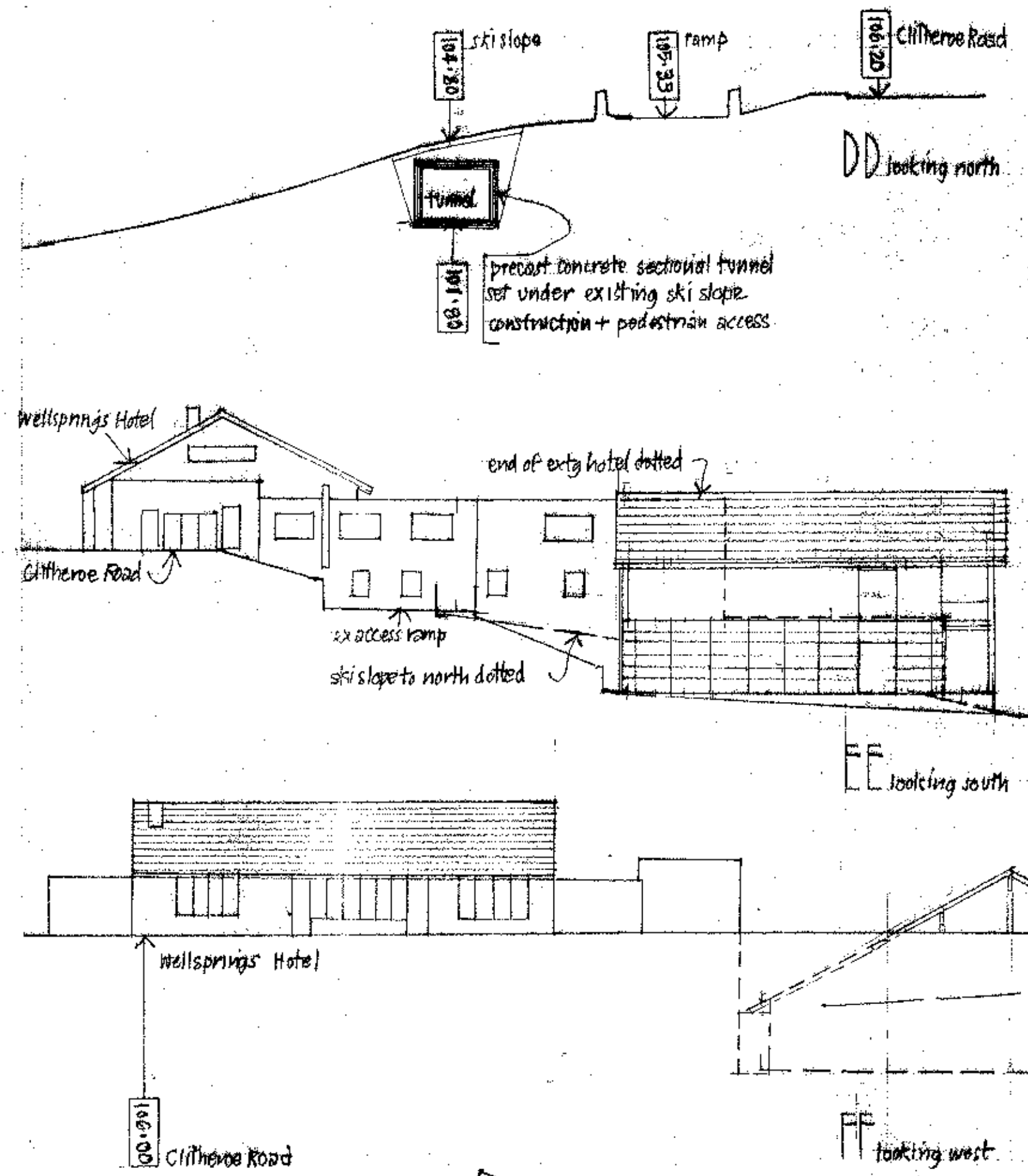
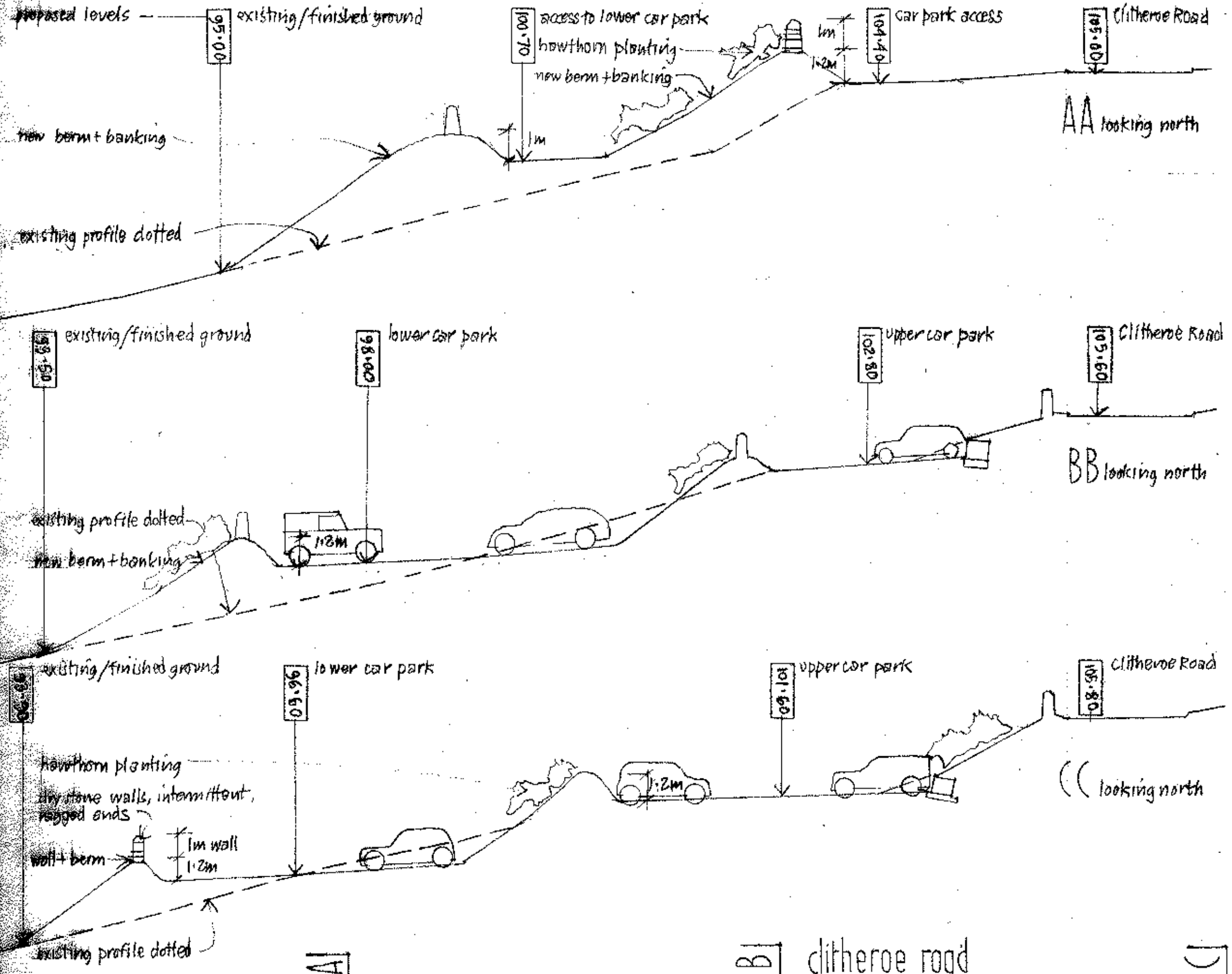
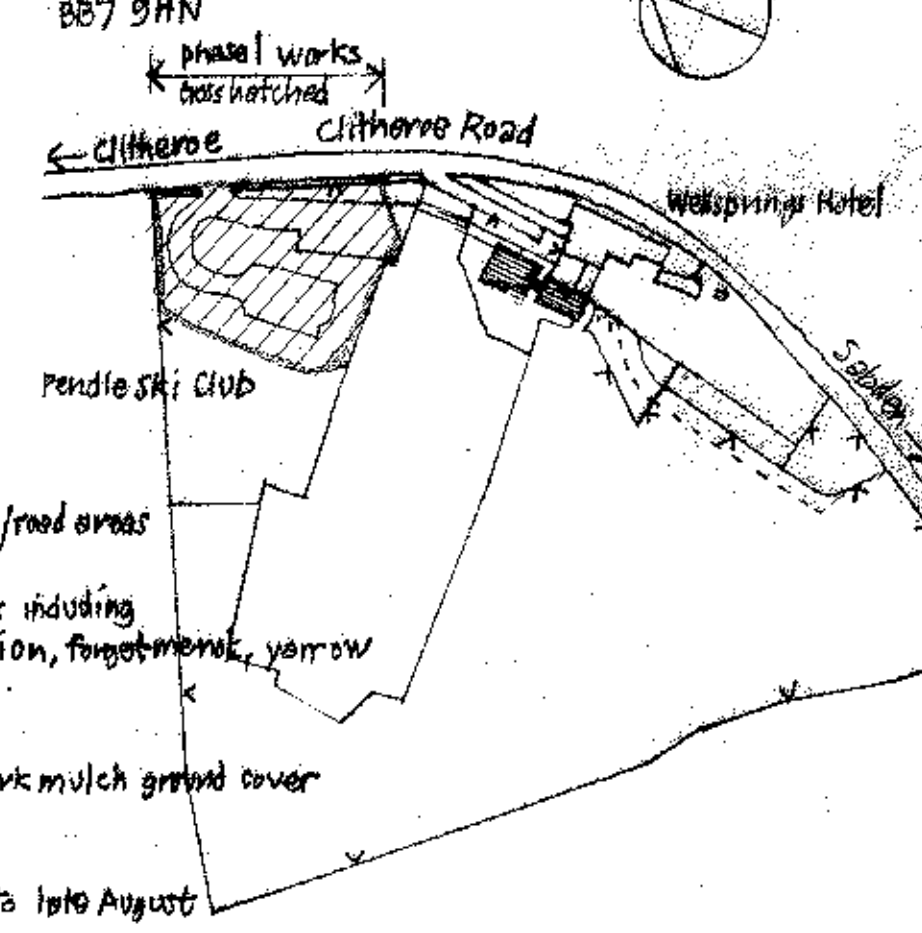


SITE SECTIONS 1:200



LOCATION 1:2500
BB7 9HN

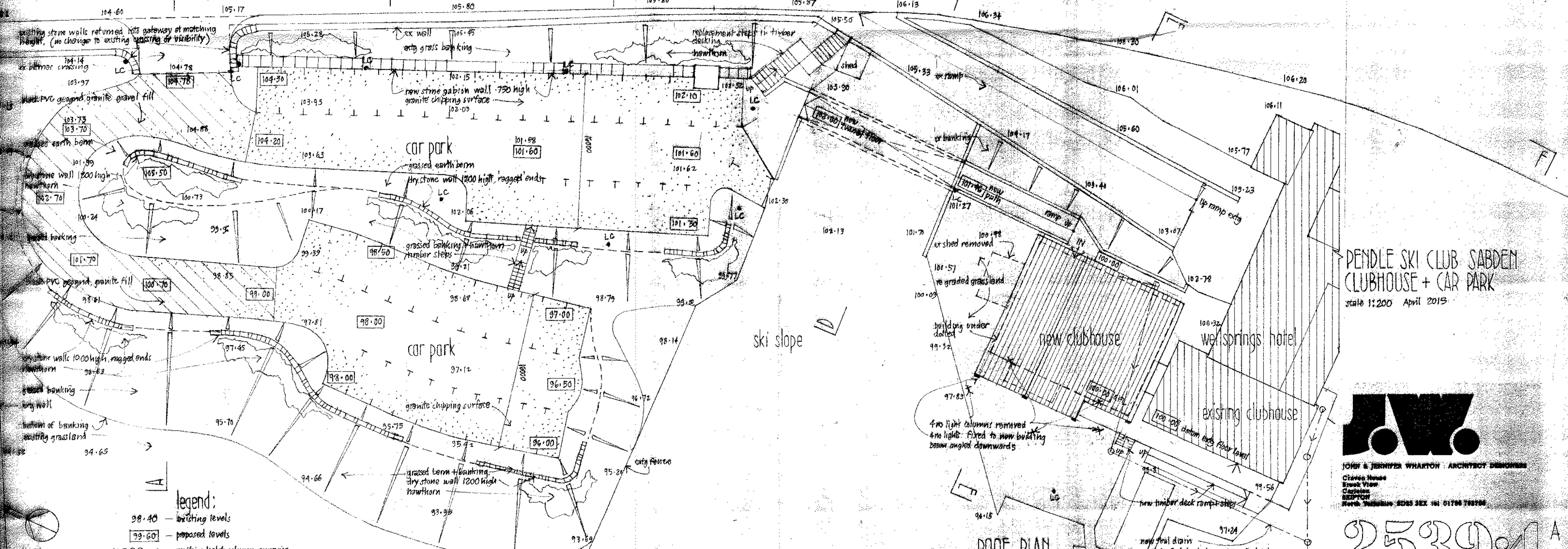


Typical elevation of walls on carpark berms 1:100

dry construction, locally sourced sandstone/gritstone 1000 high rough rounded top stones, concealed mortar joints wall ends 'ragged'

planting specification - all locally sourced
 earth mounds/bankings covered in soil + turf taken up from new car park/road areas for west facing slopes
 east facing slopes covered 150mm local soil + native wildflower grass mix including corncockle, cornflower, common poppy, mallow, daisy, primrose, red campion, forget-me-not, yellow new hawthorn/hedge groups, mixed species:
 Prunus spinosa (blackthorn) 3 litre pot grown @ 3/m²
 Viburnum opulus (guelder rose) 3 litre pot grown @ 3/m² bank mulch ground cover
 Cornus sanguinea (dogwood) 3 litre pot grown @ 3/m²

all vegetation removal to be conducted outside the period late February to late August



see 'A' - planting specification added
 phase 1 car park works identified

PENDLE SKI CLUB SABDEN CLUBHOUSE + CAR PARK
 scale 1:200 April 2015

JW
 JOHN & JENNIFER WHARTON ARCHITECT DESIGNERS
 Clitheroe House
 Street View
 Clitheroe
 BB7 9HN
 North. Telephone: 0355 565 161 01700 788168

GROUND PLAN 1:200

- Legend:**
- 98.40 - existing levels
 - 99.60 - proposed levels
 - - existing light column remains
 - - new light fitting
 - - granite chippings (grey)

ROOF PLAN

32017 0758 P

2539.4 A