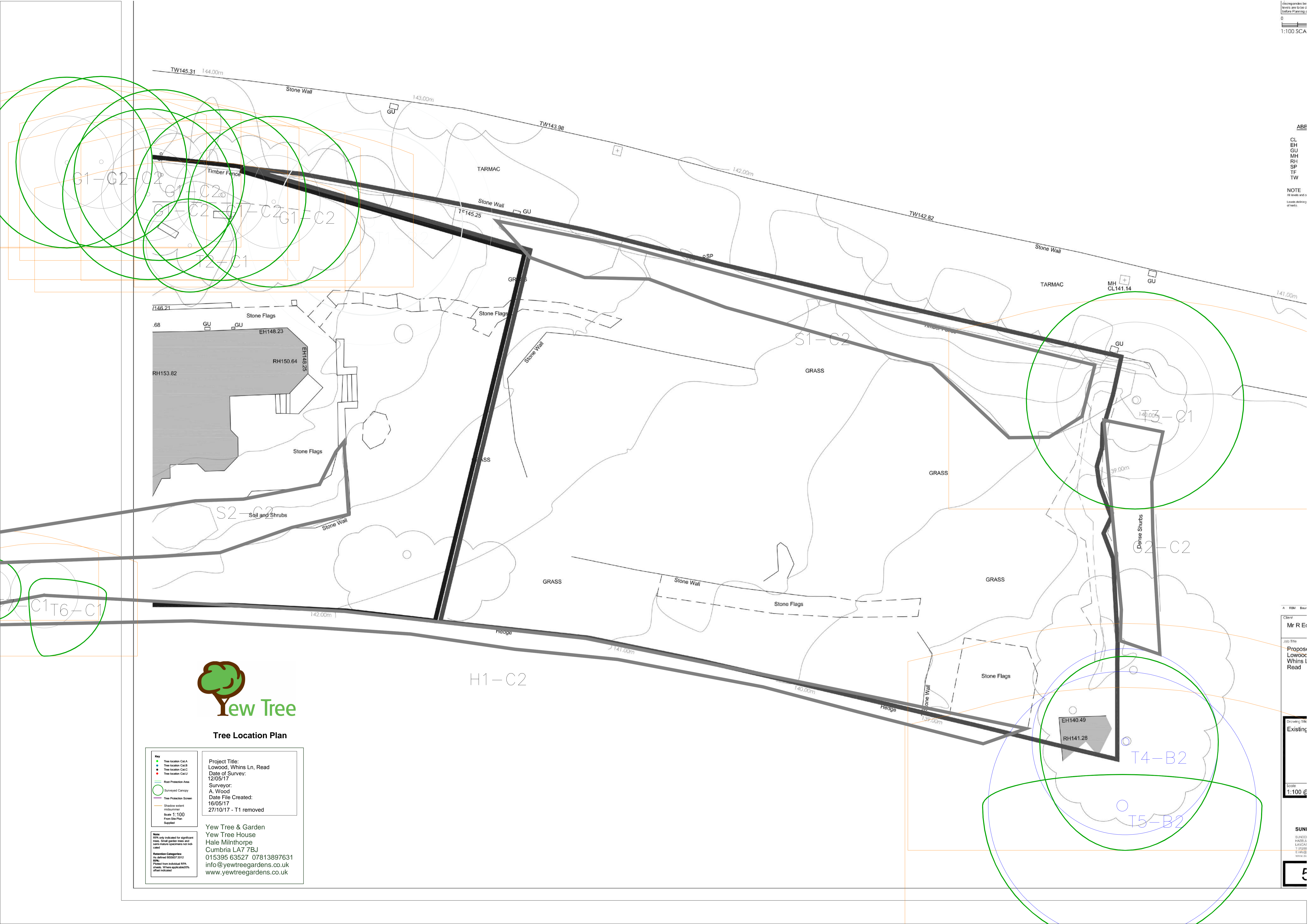


Type	Name	Age	DBH	Height	1stB	N	E	S	W	Cond	Life Exp	Comments	Recommendations	RPR m	RPA m ²	Category
T1	Quercus petraea (Sessile Oak)	M	660	17	4	6	6	6	6	Good	20+	Single stemmed Oak, located adjacent to boundary / banking. Previously crown lifted, minor diameter deadwood with some decay stubs from previous pruning	T1 removed post survey date (10/17)	7.92	197.09	B2
G1	Acer palmatum (Japanese Maple), Ilex aquifolium (Holly), Malus (Apple), Corylus avellana (Hazel), Fagus sylvatica (Beech)	EM	250	9	1	5.5	5.5	5.5	5.5	Fair	10+	Mixed linear group along boundary. Predominantly Common Beech, these have previously been topped with regrowth from previous pruning points. A number of Beech have bark damage to lower stems	Retain and protect in development, inspect biennially	3	28.28	C2
T2	Athrotaxis laxifolia (Summit Cedar)	EM	235	10	3	3	3	3	3	Fair	10+	Located in grass area to S of G1. Main stem with secondary stem growing from basal area	Retain and protect in development, inspect biennially	2.82	24.99	C1
S1	Mixed shrub group	M	50	3	0	2	2	2	2	Fair	10+	Shrub group adjacent to boundary fence, unmanaged	Retain and protect in development, recommend remedial pruning to enhance long term retention prospects	0.6	1.13	C2
T3	Salix caprea (Goat Willow)	M	420	12	3	7	7	7	7	Fair	10+	Off site tree located to E of boundary and watercourse, DBH estimated	Retain and protect in development, inspect biennially	5.04	79.81	C1
T4	Acer pseudoplatanus (Sycamore)	M	500	14	5	5.5	6	7	5.5	Good	20+	Located to E of garden shed and adjacent to watercourse. Diameter estimated and lower stem not inspected due to location / dense branches and undergrowth	Retain and protect in development, inspect biennially (clear around lower stem to allow access)	6	113.11	B2
T5	Quercus petraea (Sessile Oak)	M	720	14	3	2	9	9	9	Good	20+	Located 3m to S of boundary in adjacent field	Retain and protect in development	8.64	234.55	B2
G2	Fagus sylvatica (Beech), Ilex aquifolium (Holly), Chamaecyparis lawsoniana (Lawson Cypress)	SM	150	8	0	2	2	2	2	Good	10+	Group of younger age class trees to the E of watercourse, form boundary screening. Hybrid Cypress is largest individual member of the group	Retain and protect in development, inspect biennially	1.8	10.18	C2
H1	X Cupressocyparis leylandii (Leyland Cypress)	M	200	4.5	0	1	1	1	1	Fair	10+	Boundary hedge, previously maintained at 4 to 4.5 m height, section in Eastern area of garden has recently been reduced to 2.5m in height	Will require maintenance at suitable height if retained in development	2.4	18.1	C2
T6	Magnolia (Magnolia)	M	105	6	1	1	4	4	1	Fair	10+	Multi stemmed form typical of age/species	Limited value, will not influence layout of development	2.18	14.93	C1
T7	Robinia pseudoacacia (Locust Tree)	SM	110	7	3	2	2	2	2	Fair	10+	Young tree in lawn area	Limited value, will not influence layout of development	1.32	5.47	C1
S2	Acer palmatum (Japanese Maple), Chamaecyparis pisifera (Sawara Cypress), Mixed shrub group	M	100	3		1	1	1	1	Fair	10+	Mixed group surrounding raised patio/terrace areas, low retention values	Should not influence any development layout	1.2	4.52	C2



Tree Location Plan

<p>Key</p> <ul style="list-style-type: none"> ● Tree location Cat.A ● Tree location Cat.B ● Tree location Cat.C ● Tree location Cat.U ○ Root Protection Area ○ Surveyed Canopy — Tree Protection Screen — Shadow setting midsummer — Shadow setting winter Scale 1:100 From Site Plan Supplied <p>Note: RPA only indicated for significant trees. Small garden trees and semi-mature specimens not indicated.</p> <p>Revision Categories: As defined BS5837 2012 RPA: Plotted from individual RPA sheets. Where applicable, office indicated.</p>	<p>Project Title: Lowood, Whins Ln, Read</p> <p>Date of Survey: 12/05/17</p> <p>Surveyor: A. Wood</p> <p>Date File Created: 16/05/17</p> <p>27/10/17 - T1 removed</p> <p>Yew Tree & Garden Yew Tree House Hale Milnthorpe Cumbria LA7 7BJ 015395 63527 07813897631 info@yewtreegardens.co.uk www.yewtreegardens.co.uk</p>
--	---