


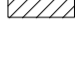
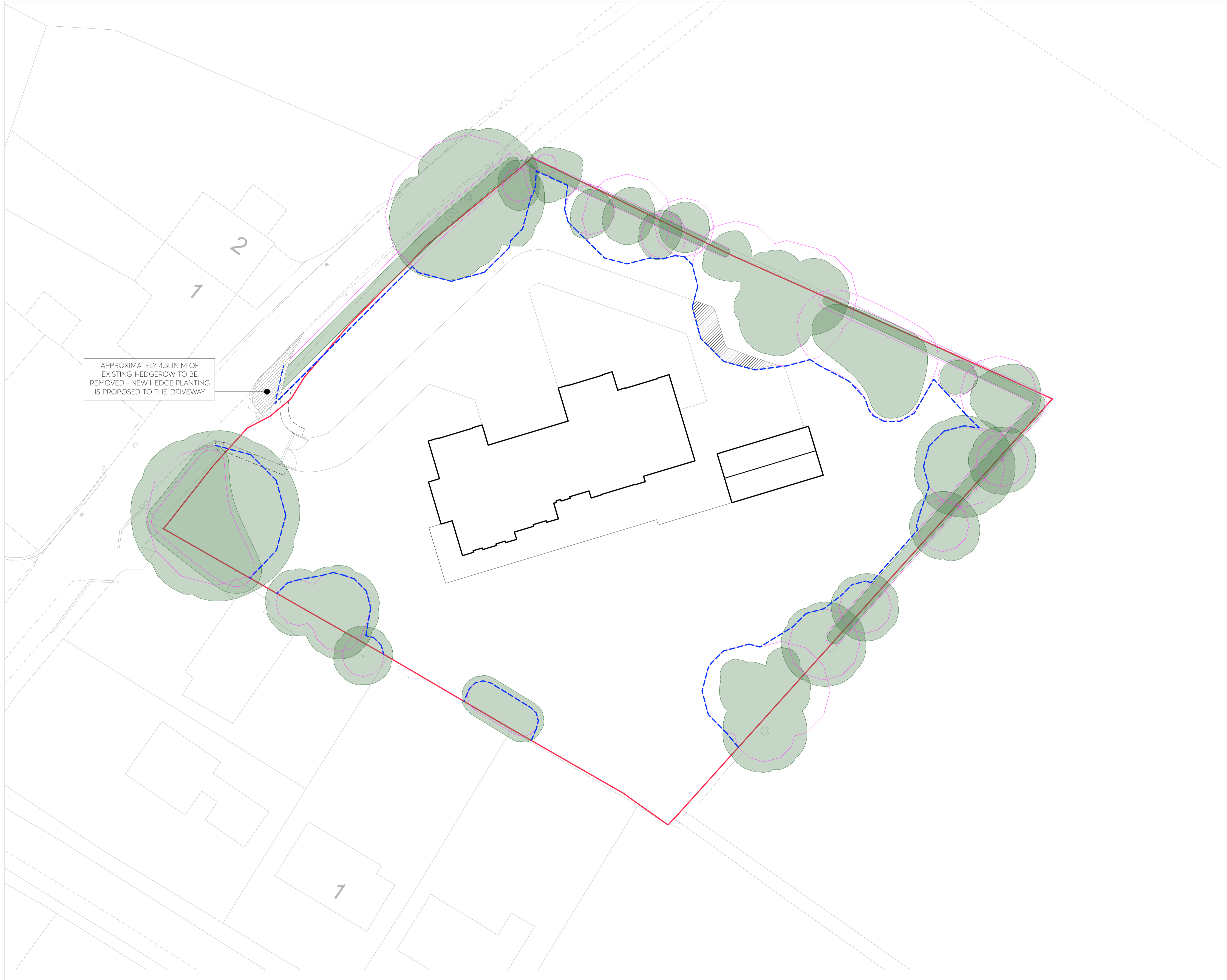


KEY	
	<b>Existing Trees &amp; Vegetation to be Retained</b> To be Retained and Protected in accordance with BS 5837 : 2012 Trees in relation to Design, Demolition & Construction
	<b>Root Protection Area</b> Refer to Tree Survey by Bowland Tree Consultancy Ltd
	<b>Temporary Protective Fencing</b> To be in accordance with BS 5837 : 2012 Trees in relation to Design Demolition & Construction
	<b>Hand Dig Area</b> To be in accordance with BS 5837 : 2012 Trees in relation to Design Demolition & Construction



APPROXIMATELY 4.5LIN M OF EXISTING HEDGEROW TO BE REMOVED - NEW HEDGE PLANTING IS PROPOSED TO THE DRIVEWAY

Rev	Date	Status and Description	Drawn	Appr'd
-	27.11.17	PLANNING	HC	ST

- NOTE:
1. Do not scale from this drawing
  2. All setting out, levels and dimensions to be agreed on site.
  3. The dimensions of all materials must be checked on site before being laid out.
  4. This drawing must be read with the relevant specification clauses and detail drawings.
  5. Order of construction and setting out to be agreed on site.
  6. This drawing is copyright protected and may not be reproduced in whole or part without written authority.
  7. All Dimensions are in millimetres unless Otherwise Stated
  8. All proposed dimensions subject to site survey

Originator



© 1616@layer-ing.com  
t: (0)1625 627307  
www.layer-ing.com

Project	Willow Spring   Wiswell		
Drg title	Tree Retention & Protection Plan		
Drg nr	LYR089_M303	Drg Rev	-
Scale	1:200 @ A1	Drawn	HC
Status	PLANNING	Checked	ST