

Stonyhurst College

Shireburn Quadrangle – Aerial View Showing Elevation Locations



Key

Elevation = E

320171148

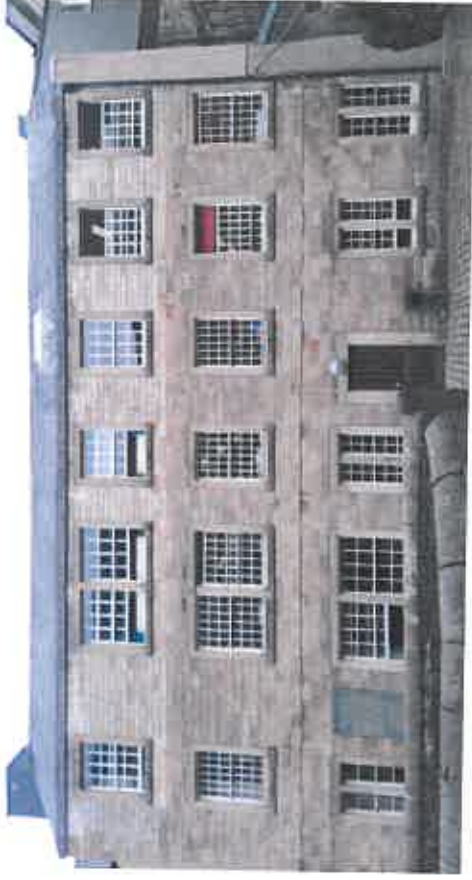
Shireburn Quad – Elevations 1 - 5



Elevation Two - E2



Elevation Three - E3



Elevation One - E1



Elevation Four - E4



Elevation Five - E5

320171148

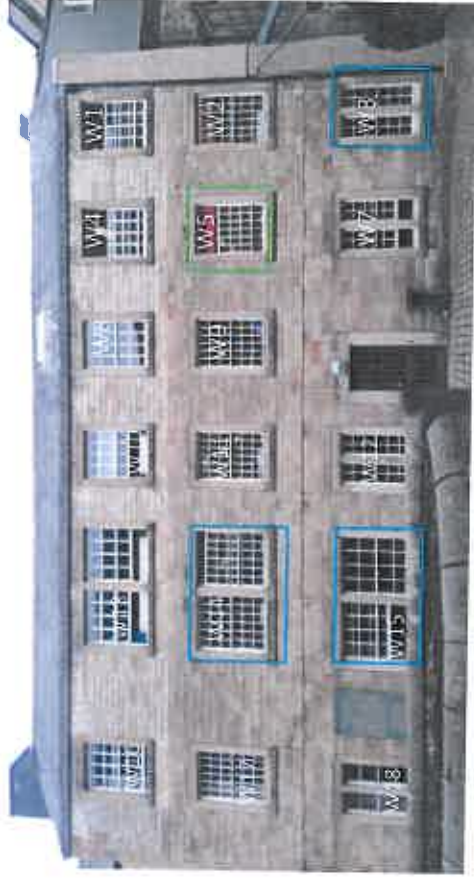
Shireburn Quad – Annotated Elevations 1 - 5



Elevation Two - E2



Elevation Three - E3



Elevation Four - E4



Elevation Five - E5

Elevation One - E1

320171148

Stonyhurst College

Authentic Historic Window Schedule – Elevations 1 - 5

Window Number	Window Frame(s)	Window Type	Glazing Type(s)	Notes
W3	Timber framed	Sliding sash	Single glazed	Two light rectangular window with slim glazing bars
W14	Timber framed	Sliding sash	Single glazed	Two light square window with slim glazing bars and small window panes
W15	Timber framed	Sliding sash	Single glazed	Two light square window with slim glazing bars and medium window panes
W25	Timber framed	Outer windows fixed / Central side hung outward opening	Single glazed	Three light rectangular window with slim glazing bars
W28	Metal frames / Fixed into sandstone	Outer windows side hung / Central windows fixed	Leaded rectangular single glazed	Four light rectangular window with leaded plain glass windows
W32	Timber framed	Fixed	Single glazed	Single rectangular window with slim glazing bars
W46 and W49	Fixed into sandstone	Stained glass	Stained glass	Leaded windows to chapel
W54	Crittall window frame	Side Hung	Single glazed	Rectangular window

320171148

Shireburn Quad – Elevations 6 - 9



Elevation Six – E6



Elevation Seven – E7

320171148



Elevation Eight – E8



Elevation Nine – E9



Stonyhurst College

Authentic Historic Window Schedule – Elevations 6 - 9

Window Number	Window Frame(s)	Window Type (s)	Glazing Type(s)	Notes
W64 – 67	Timber framed, crittal framed, fixed directly into stone	Crittal framed windows central pivoting, timber framed bottom hinged inwards opening, fixed into the stone surround with a horizontal cast iron glazing bar	Single glazed	24 nr. windows, 14 of which are directly fixed into the stone surround
W90	Fixed into sandstone	Stained glass	Stained glass	Leaded windows to staircase
W92	Fixed into sandstone	Stained glass	Stained glass	Leaded windows to staircase
W100	Fixed into sandstone, Metal Framed	Fixed into the stone surround, lower outer windows have a metal frame	Single glazed	N/A
W102	Fixed into sandstone	Fixed into the stone surround, lower window has a horizontal cast iron glazing bar	Single glazed	Lower part of window faces a service duct and is below the ground level of the quad
W104	Fixed into sandstone	Fixed into the stone surround, lower window has a horizontal cast iron glazing bar	Single glazed	N/A

320171148