



Historic England

Little Painley bowl barrow

List Entry Summary

This monument is scheduled under the Ancient Monuments and Archaeological Areas Act 1979 as amended as it appears to the Secretary of State to be of national importance. This entry is a copy, the original is held by the Department for Culture, Media and Sport.

Name: Little Painley bowl barrow

List entry Number: 1009494

Location

The monument may lie within the boundary of more than one authority.

County: Lancashire

District: Ribble Valley

District Type: District Authority

Parish: Horton

National Park: Not applicable to this List entry.

Grade: Not applicable to this List entry.

Date first scheduled: 01-Jan-1971

Date of most recent amendment: 09-Aug-1994

Legacy System Information

The contents of this record have been generated from a legacy data system.

Legacy System: RSM

UID: 23746

Asset Groupings

This list entry does not comprise part of an Asset Grouping. Asset Groupings are not part of the official record but are added later for information.

List entry Description

Summary of Monument

Legacy Record - This information may be included in the List Entry Details.

Reasons for Designation

Bowl barrows, the most numerous form of round barrow, are funerary monuments dating from the Late Neolithic period to the Late Bronze Age, with most examples belonging to the period 2400-1500 BC. They were constructed as earthen or rubble mounds, sometimes ditched, which covered single or multiple burials. They occur either in isolation or grouped as cemeteries and often acted as a focus for burials in later periods. Often superficially similar, although differing widely in size, they exhibit regional variations in form and a diversity of burial practices. There are over 10,000 surviving bowl barrows recorded nationally (many more have already been destroyed), occurring across most of lowland Britain. Often occupying prominent locations, they are a major historic element in the modern landscape and their considerable variation of form and longevity as a monument type provide important information on the diversity of beliefs and social organisations amongst early prehistoric communities. They are

particularly representative of their period and a substantial proportion of surviving examples are considered worthy of protection.

Despite limited antiquarian investigation of the monument and a covering of mature trees planted during the 1960s, Little Painley bowl barrow survives reasonably well. This investigation located a cremation urn, and further evidence of interments and grave goods will exist within the mound and upon the old landsurface beneath.

History

Legacy Record - This information may be included in the List Entry Details.

Details

The monument includes Little Painley bowl barrow located on a local high point to the east of the River Ribble. It includes a circular earth and stone mound measuring c.20m in diameter and up to 0.5m high which is surrounded by a ditch 2.5m wide and 0.5m deep. Flanking this ditch, particularly on the south western side, are traces of an outer bank measuring 2.5m wide by 0.3m high. Limited antiquarian investigation of the barrow located a cremation urn. All post and wire fences are excluded from the scheduling but the ground beneath these features is included.

MAP EXTRACT The site of the monument is shown on the attached map extract. It includes a 2 metre boundary around the archaeological features, considered to be essential for the monument's support and preservation.

Selected Sources

Books and journals

Whittaker, , History of Craven, (1878)

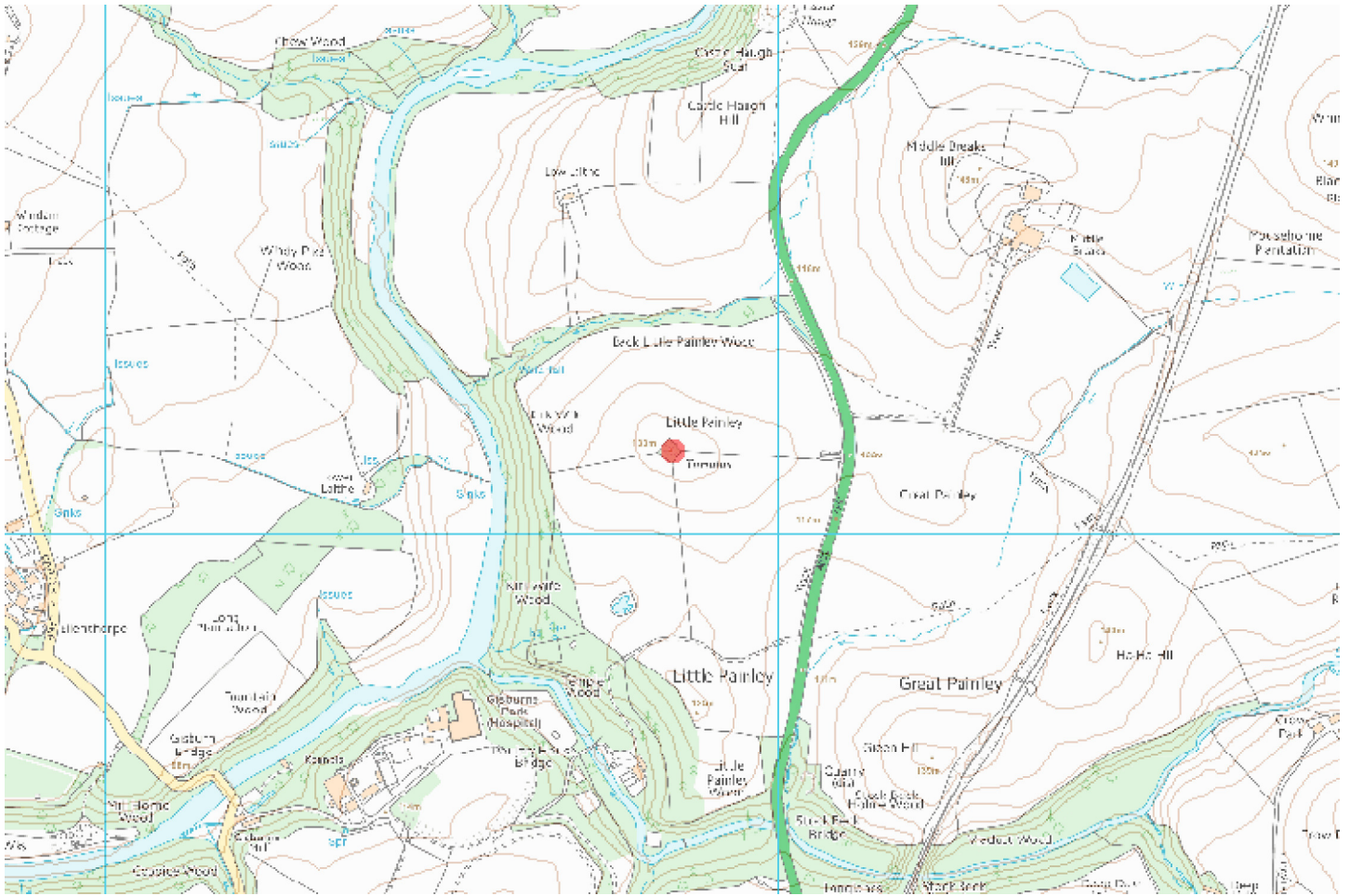
Other

FMW Report, Capstick, B, Little Painley Round Barrow, (1993)

SMR No. 330, Lancs SMR, Little Painley, near Castle Hough, (1993)

National Grid Reference: SD 82843 50125

Map



© Crown Copyright and database right 2016. All rights reserved. Ordnance Survey Licence number 100024900.

© British Crown and SeaZone Solutions Limited 2016. All rights reserved. Licence number 102006.006.

Use of this data is subject to [Terms and Conditions \(https://historicengland.org.uk/terms/website-terms-conditions/\)](https://historicengland.org.uk/terms/website-terms-conditions/).

The above map is for quick reference purposes only and may not be to scale. For a copy of the full scale map, please see the attached PDF - [1009494 .pdf \(http://mapservices.HistoricEngland.org.uk/printwebservicehle/StatutoryPrint.svc/25989/HLE_A4L_NoGrade|HLE_A3L_NoGrade.pdf\)](http://mapservices.HistoricEngland.org.uk/printwebservicehle/StatutoryPrint.svc/25989/HLE_A4L_NoGrade|HLE_A3L_NoGrade.pdf)

The PDF will be generated from our live systems and may take a few minutes to download depending on how busy our servers are. We apologise for this delay.

This copy shows the entry on 22-Aug-2016 at 05:10:05.

End of official listing