

Waddow View, Clitheroe Proposed Materials Palette.



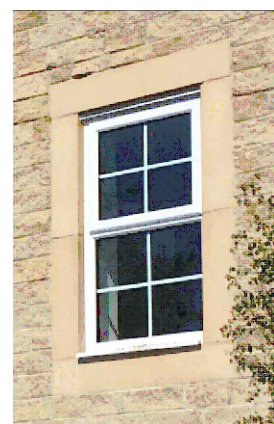
Weber Render - Ivory finish (Or similar approved)



Timber door canopy & gallows brackets - tiles to match main roof (Or similar approved)



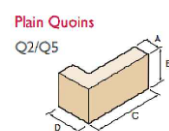
Forticrete Walling Stone - Black Old Weathered Split finish (Or similar approved)



White UPVC Windows
Forticrete Stone surround - Portland (Or similar approved)



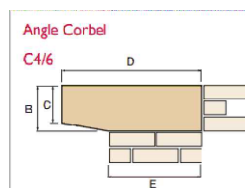
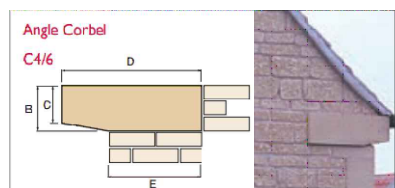
Roof Tile - Russell Grampian Slate Grey



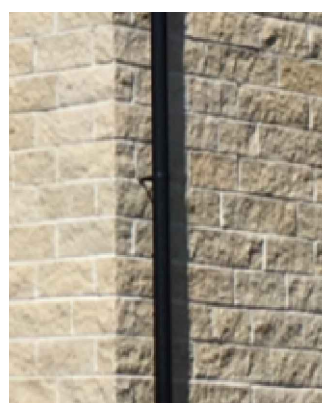
Forticrete Plain Quoins - Portland (Or similar approved)



Front Door
Ian Firth `Cottage Superior` - Black (Or similar approved)



Forticrete Angle Corbel - Portland (Or similar approved)



Black UPVC rainwater goods (Or similar approved)

Rev	Amendment	Drawn/Date:

BARRATT HOMES
Barratt / David Wilson Homes
North West
303 Bridgewater Place
2nd Floor
Warrington
Cheshire
WA3 6XF
TEL: 01925 846600

DAVID WILSON HOMES
WHERE QUALITY LIVES

Project
Waddow View
Clitheroe

Drawing Title
Proposed Materials Palette

Status
For Approval

Scale
NTS @ A3

Date
05-02-19

Drawn By
JW

Drawing Ref
WADV-MP

Revision