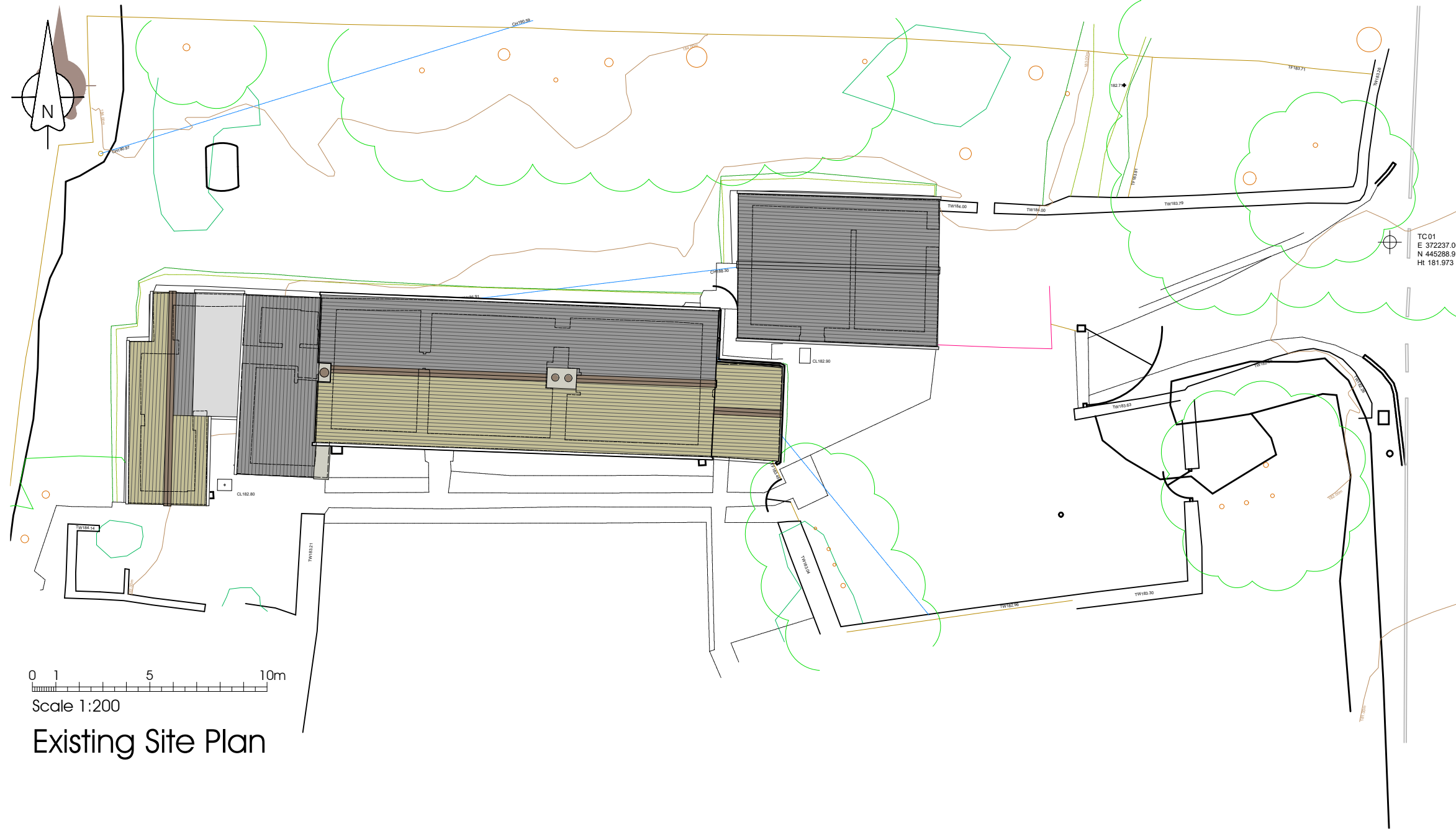


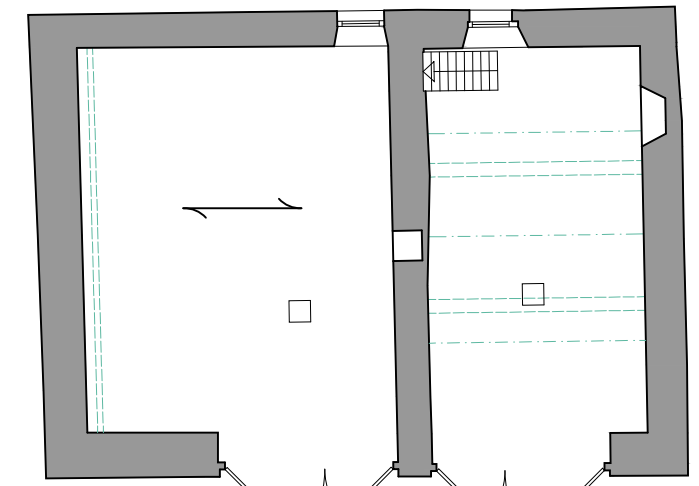
NOTES:

1: Do not scale this drawing, use figured dimensions only 2: The Contractor, Sub Contractor or specialist supplier are responsible for confirming site dimensions prior to fabrication 3: Any dimensional discrepancies are to be reported to the Architect immediately

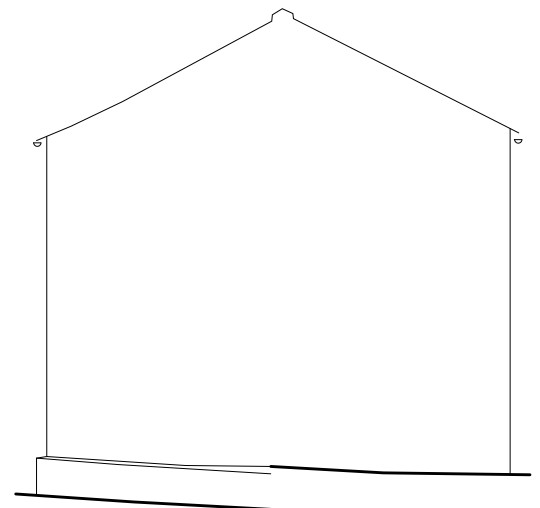


0 1 5 10m
Scale 1:200

Existing Site Plan



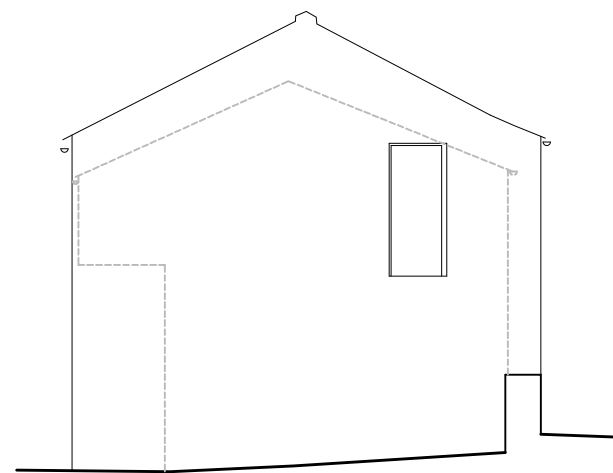
Garage Floor Plan



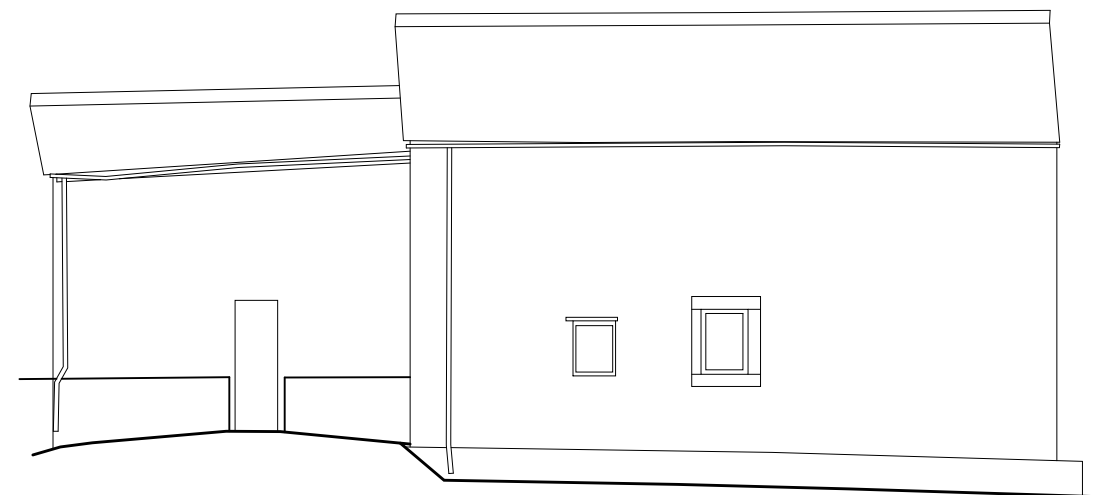
West elevation



South elevation Scale 1:100

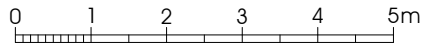


East elevation

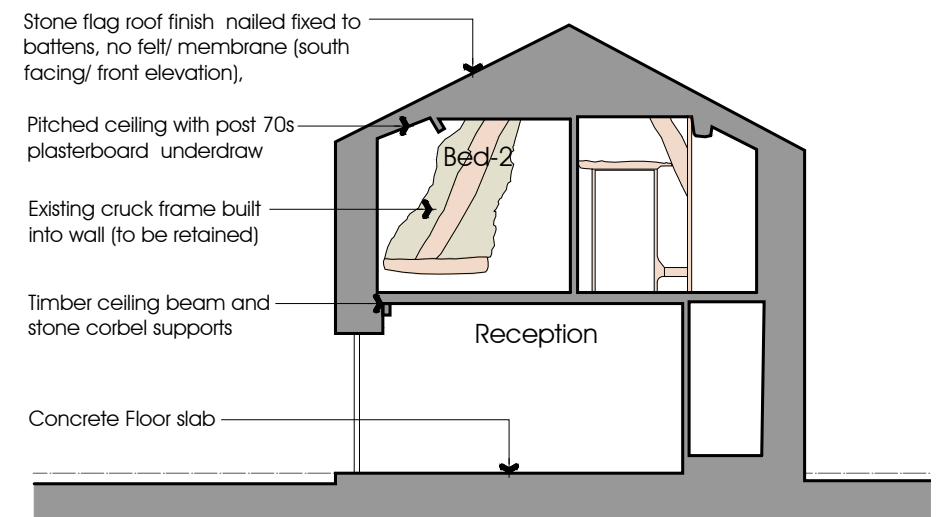
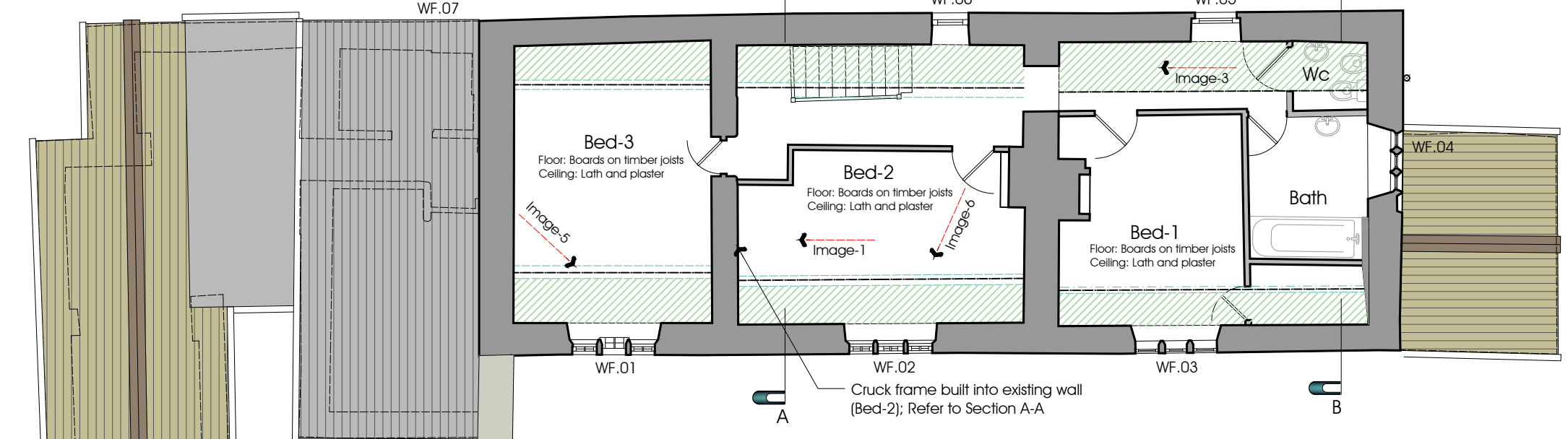


North elevation

NOTES:
 1: Do not scale this drawing, use figured dimensions only 2: The Contractor, Sub Contractor or specialist supplier are responsible for confirming site dimensions prior to fabrication 3: Any dimensional discrepancies are to be reported to the Architect immediately



First Floor



Section A-A



Image-1: Bedroom-2 Image-2: Reception

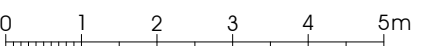
Image-5: WF.01 (Bed-3)



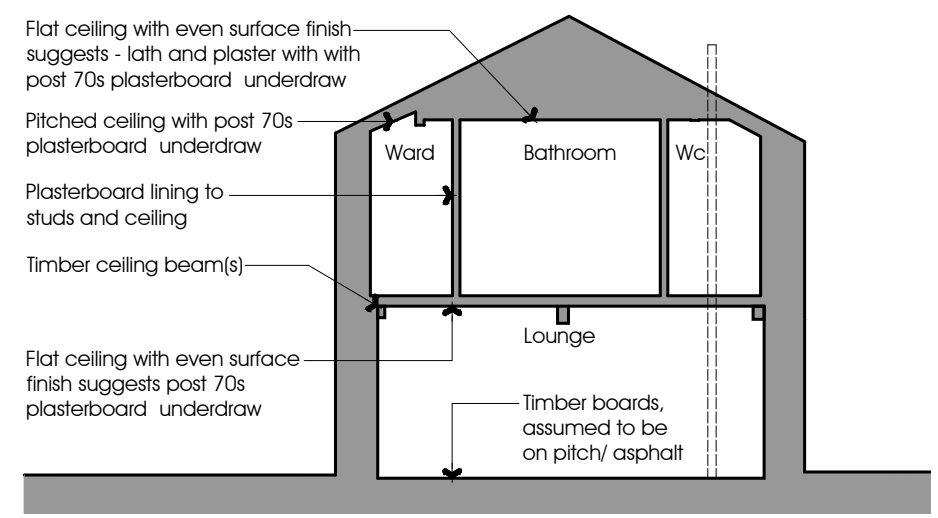
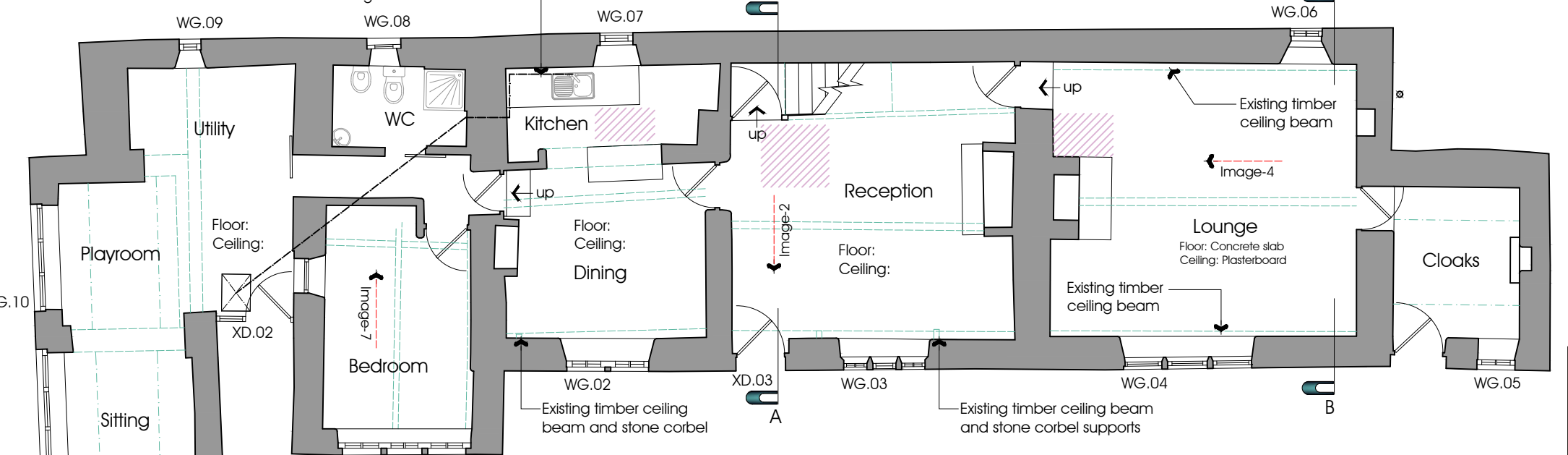
Image-6: WF.02 (Bed-2)



Pitched ceiling with post 70s plasterboard lining/ underdraw
 Mineral wool ceiling insulation inserted in all lofts to flat ceilings
 All Existing first floor internal studs in timber, with plasterboard lining (post 70's alterations and refurbishment)



Ground Floor



Section B-B

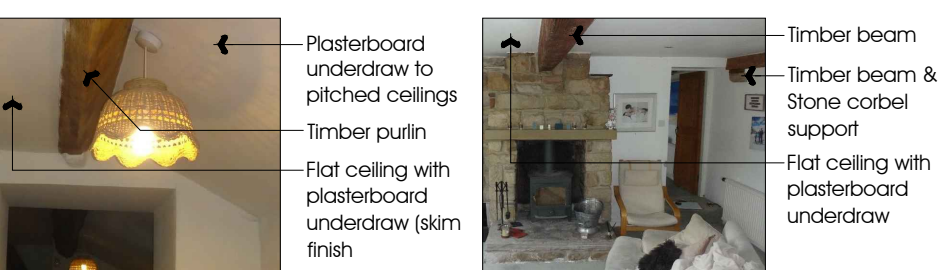


Image-3: Corridor/ Wc Image-4: Lounge

GROUND FLOOR CONSTRUCTION

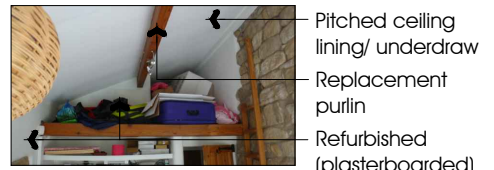
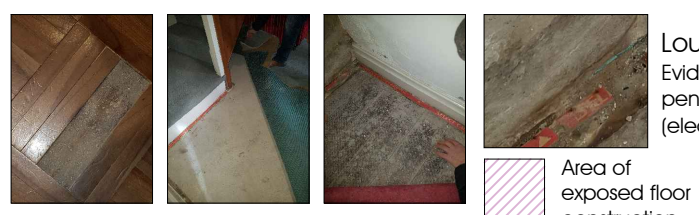


Image-7: GF Bedroom



Kitchen: Concrete base
 Reception: Concrete base
 Lounge: Timber boards, assumed to be on pitch/ asphalt

Lounge Floor/ wall - Evidence of damp penetration (electro-osmosis failure)

NOTES:

1: Do not scale this drawing, use figured dimensions only 2: The Contractor, Sub Contractor or specialist supplier are responsible for confirming site dimensions prior to fabrication 3: Any dimensional discrepancies are to be reported to the Architect immediately

IMAGES AS EXISTING: LOFT (HATCH-1)



LH-1 View-1
Slate roof finish nailed to fixed battens (north facing/ rear elevation),



LH-1 View-2a
Stone flag roof finish nailed to fixed battens (south facing/ front elevation),



LH-1 View-2b
Close-up of stone flag roof and nail fixing through batten



LH-1 View-3
Stone (west) gable wall and chimney (Bed-3) at loft level.



LH-1 View-4
Stone (west) gable wall and chimney (Bed-3) at loft level.



LH-1 Ceiling
Lath and plaster ceiling (loft level) over Bed-2 & Bed-3

LOFT HATCH-2 IMAGES



LH-2 View-1
Lime render plastered east gable wall (bathroom) at loft level.



LH-2 View-2
Lime render/ plastered chimney at loft level



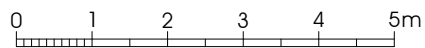
LH-2 View-3
Lime render/ plastered chimney at loft level



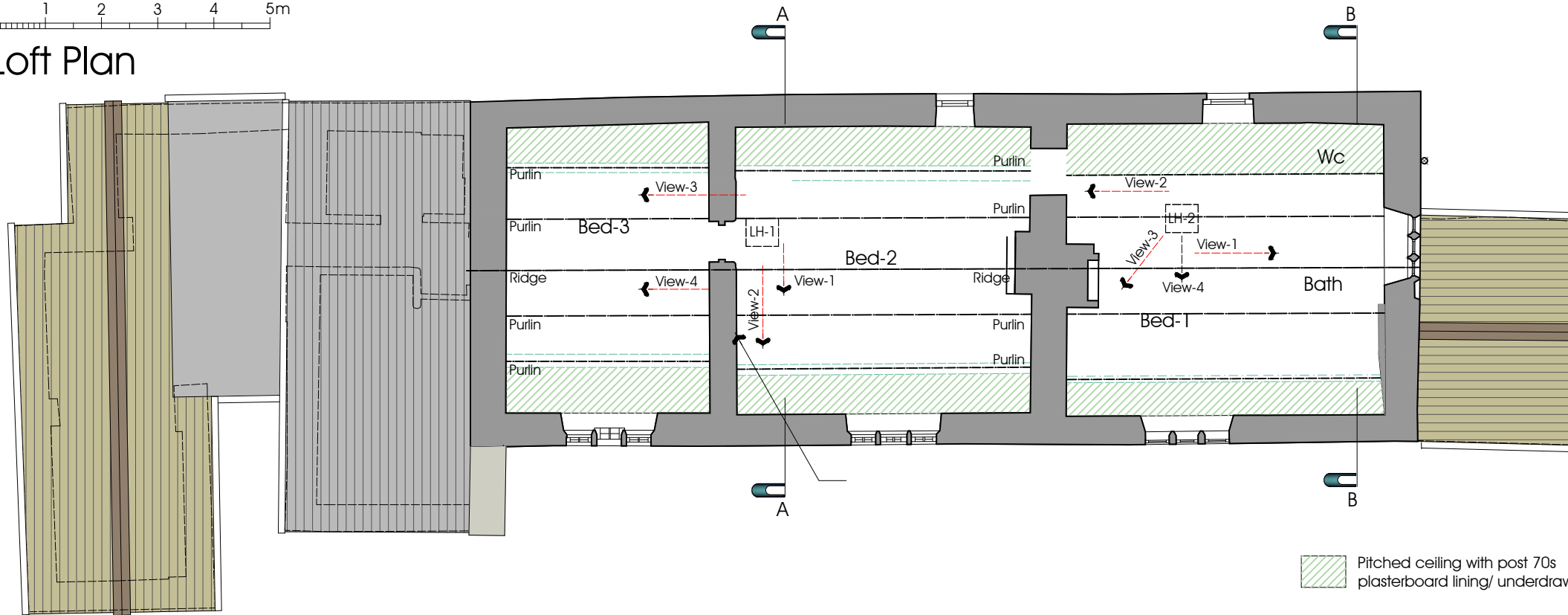
LH-2 View-4
Stone flag roof finish nailed fixed to battens, no felt/ membrane (south facing/ front elevation),



LH-2 Ceiling
Lath and plaster ceiling from loft level (over Bed-1, Bathroom & Wc) - refer to other images for apparent plasterboard underdraw



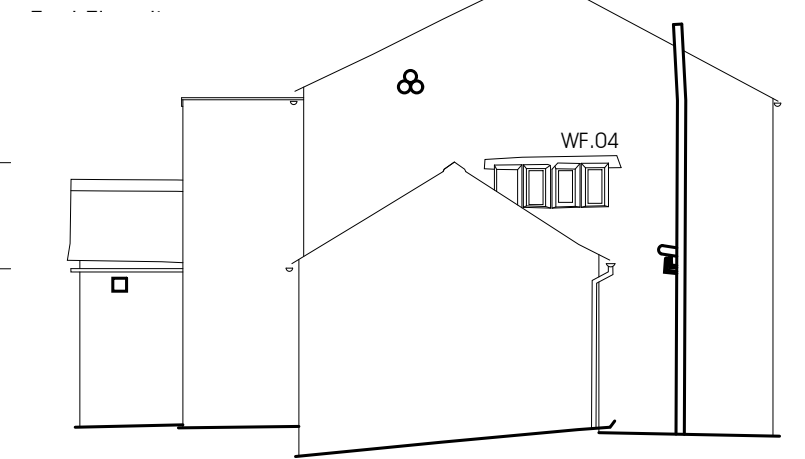
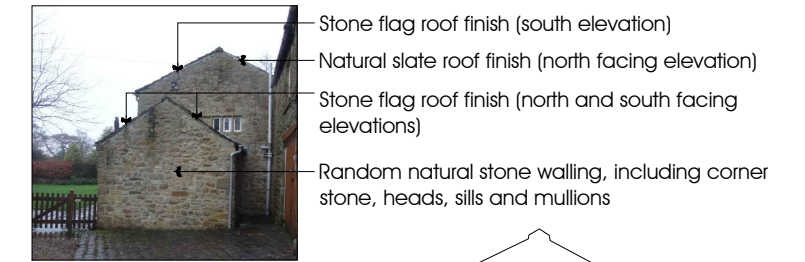
Loft Plan



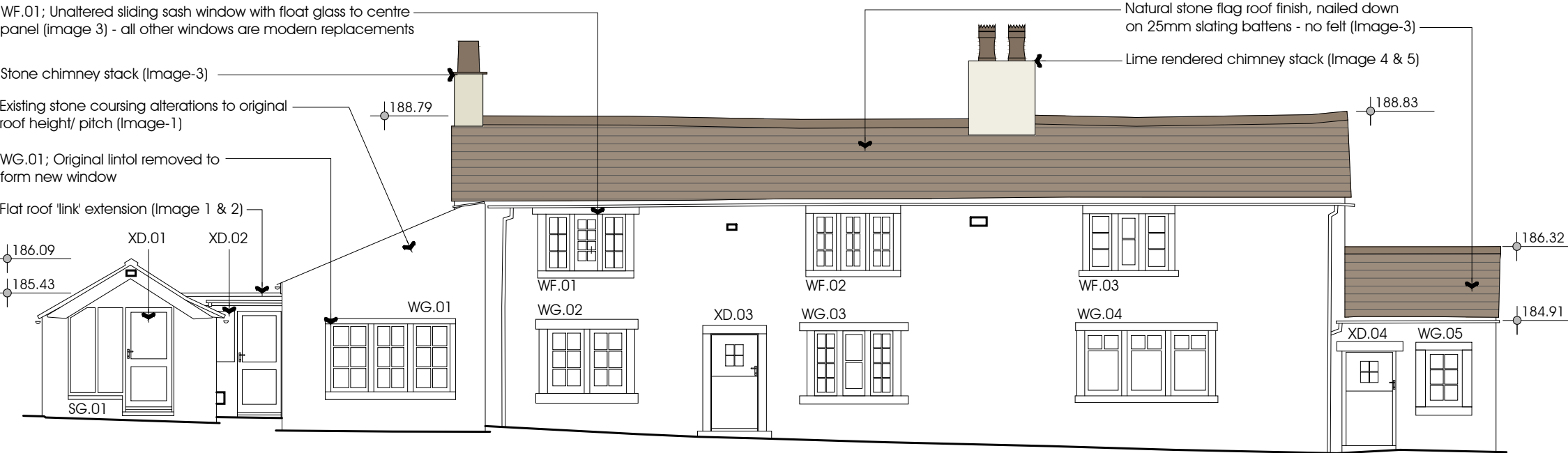
NOTES:

1: Do not scale this drawing, use figured dimensions only 2: The Contractor, Sub Contractor or specialist supplier are responsible for confirming site dimensions prior to fabrication 3: Any dimensional discrepancies are to be reported to the Architect immediately

Image-9



East elevation 0 1 2 3 4 5m



South elevation

Image-1



South Elevation

Image-2



South Elevation

Image-3



South Elevation

Image-4



South Elevation

Image-5



North Elevation

Image-6



North Elevation

Image-7

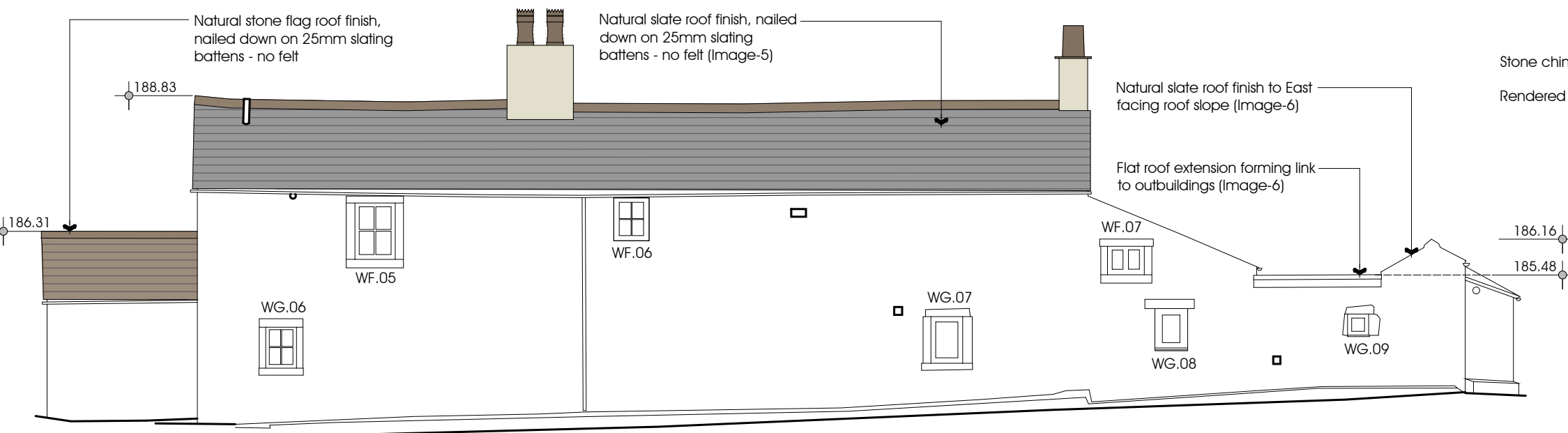


West Elevation

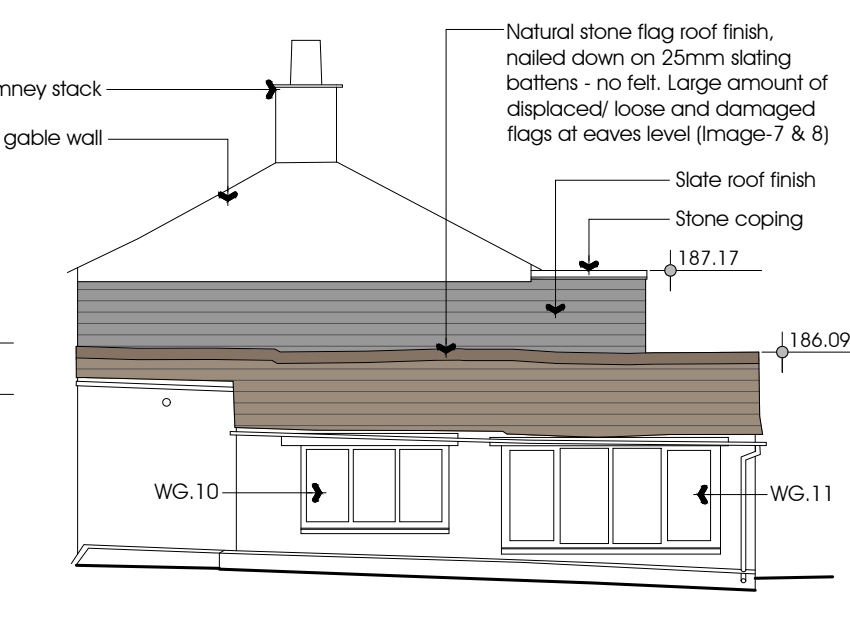
Image-8



West Elevation



North elevation



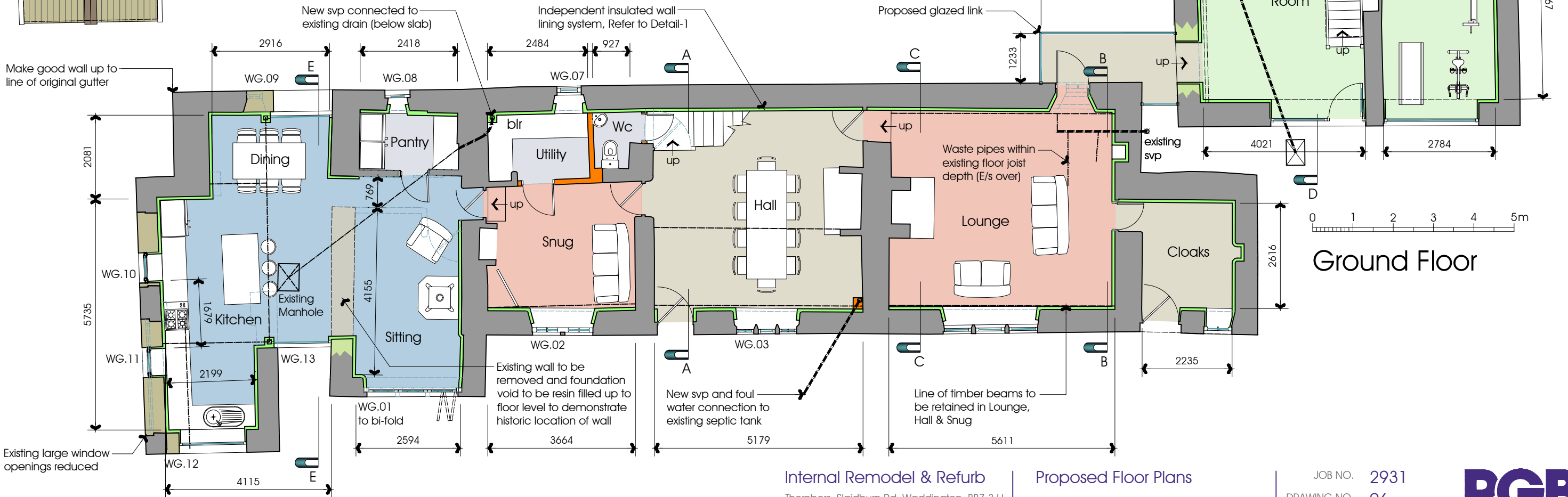
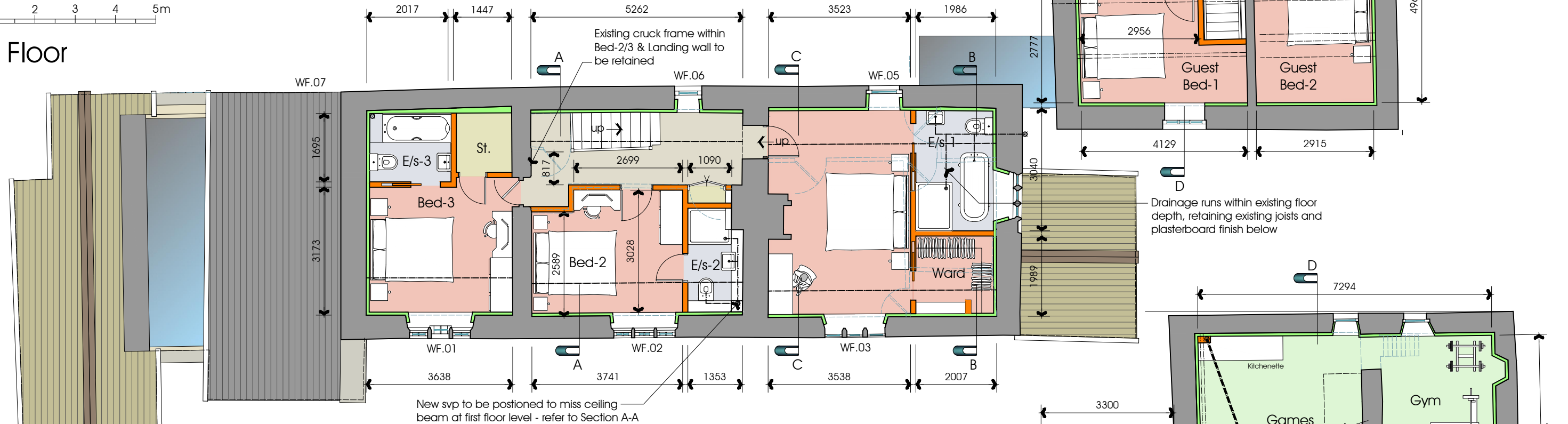
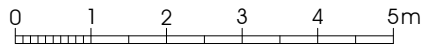
West elevation 0 1 2 3 4 5m

NOTES:
 1: Do not scale this drawing, use figured dimensions only 2: The Contractor, Sub Contractor or specialist supplier are responsible for confirming site dimensions prior to fabrication 3: Any dimensional discrepancies are to be reported to the Architect immediately



NOTES:
 1: Do not scale this drawing, use figured dimensions only 2: The Contractor, Sub Contractor or specialist supplier are responsible for confirming site dimensions prior to fabrication 3: Any dimensional discrepancies are to be reported to the Architect immediately

First Floor



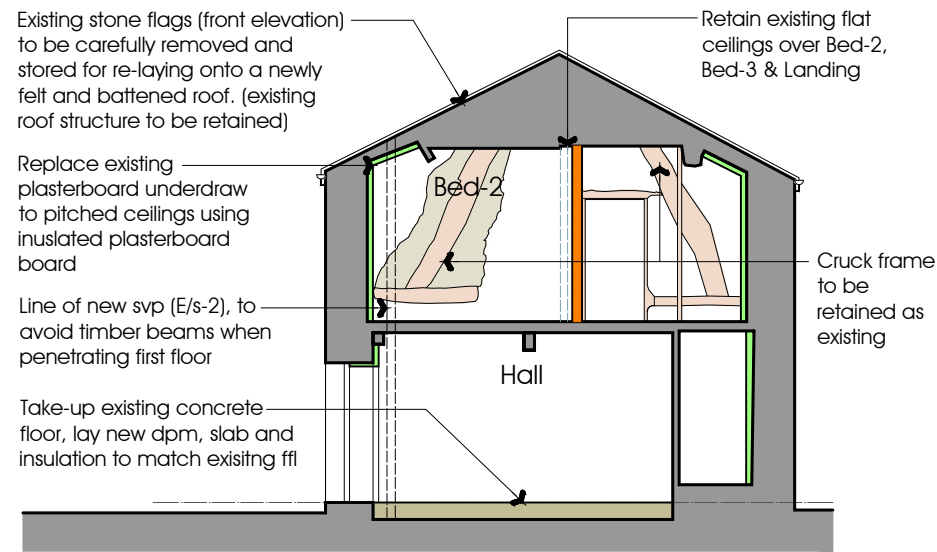
Ground Floor

Internal Remodel & Refurb
 Thornbers, Slaidburn Rd, Waddington, BB7 3JJ
 Mr & Mrs Frankish

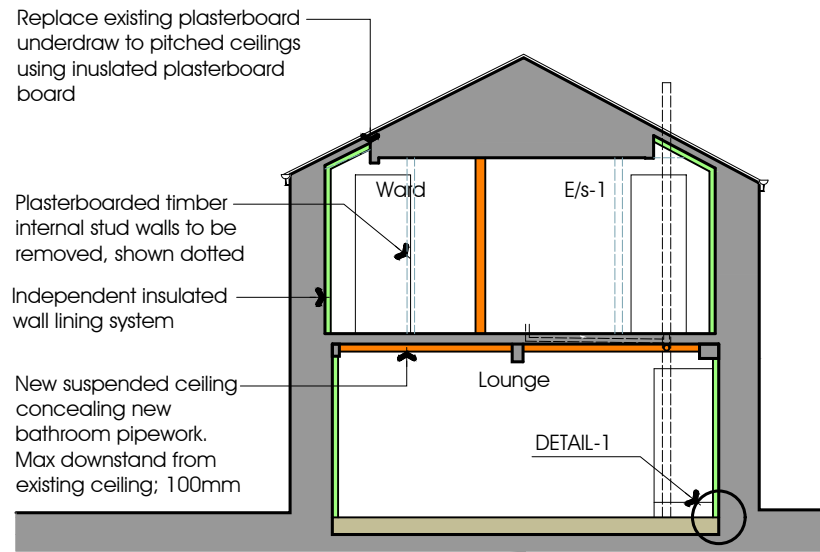
Proposed Floor Plans
 DATE 14.03.18

JOB NO. 2931
 DRAWING NO. 06
 REVISION
 SCALE 1:100 @ A3



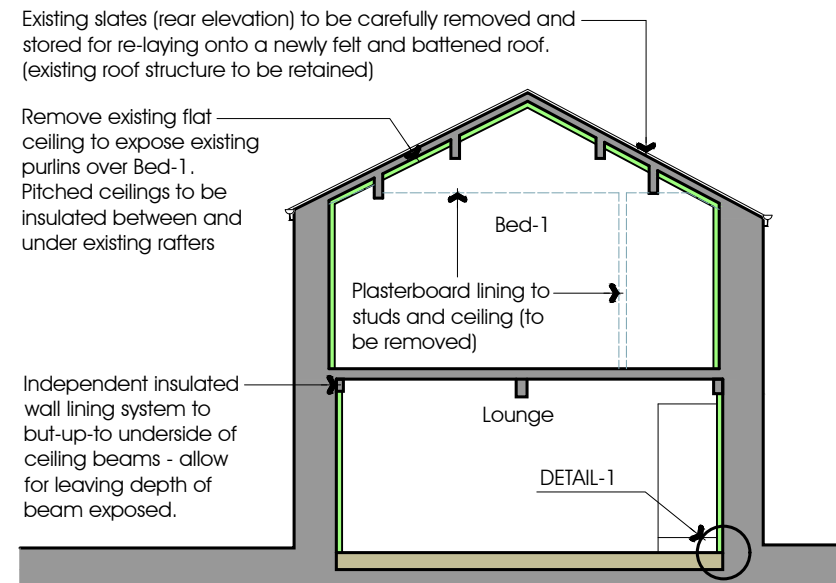
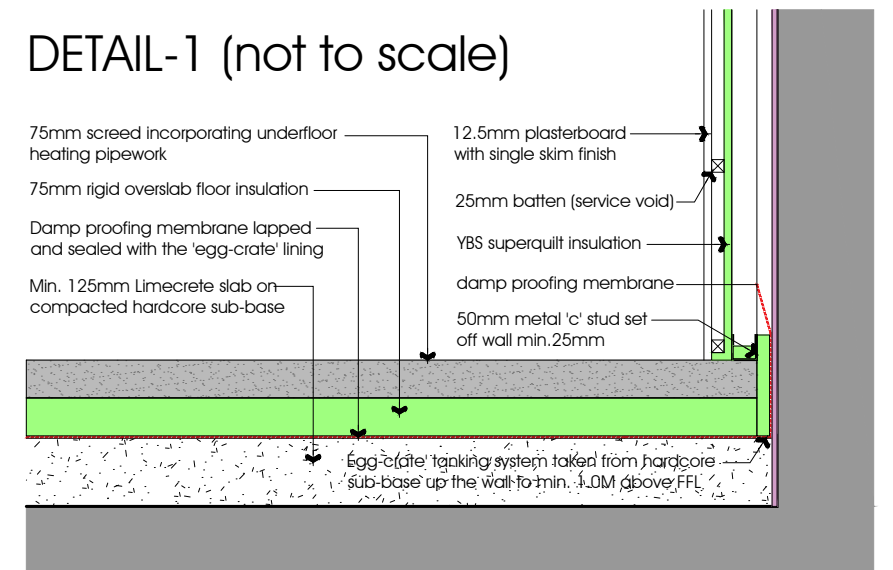


Section A-A

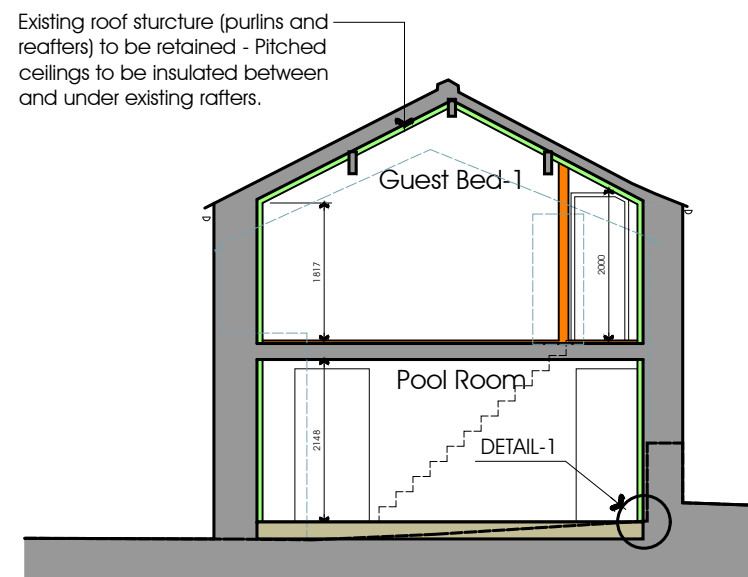


Section B-B

DETAIL-1 (not to scale)

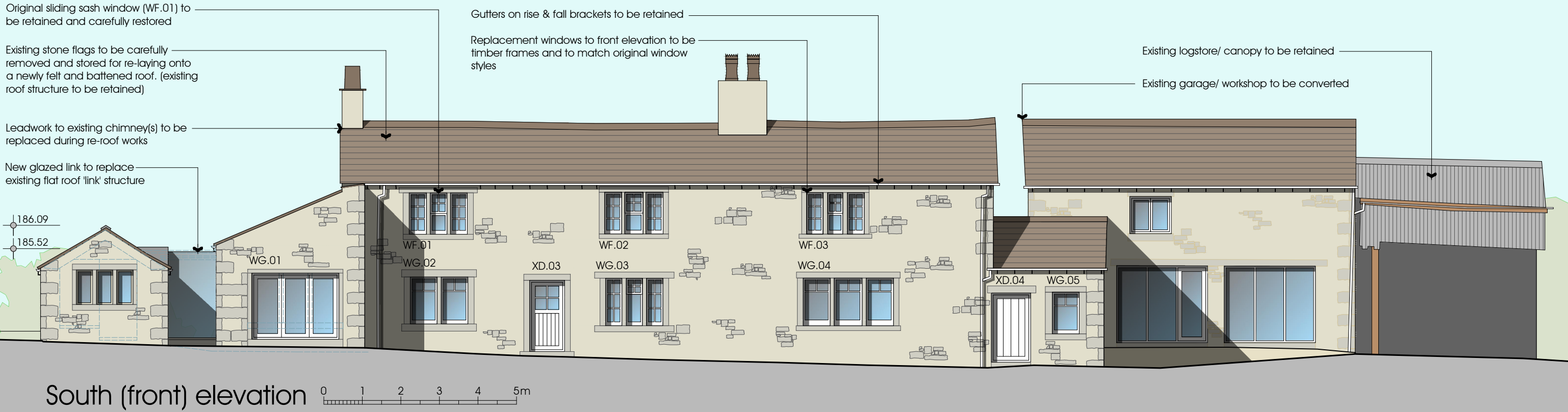


Section C-C

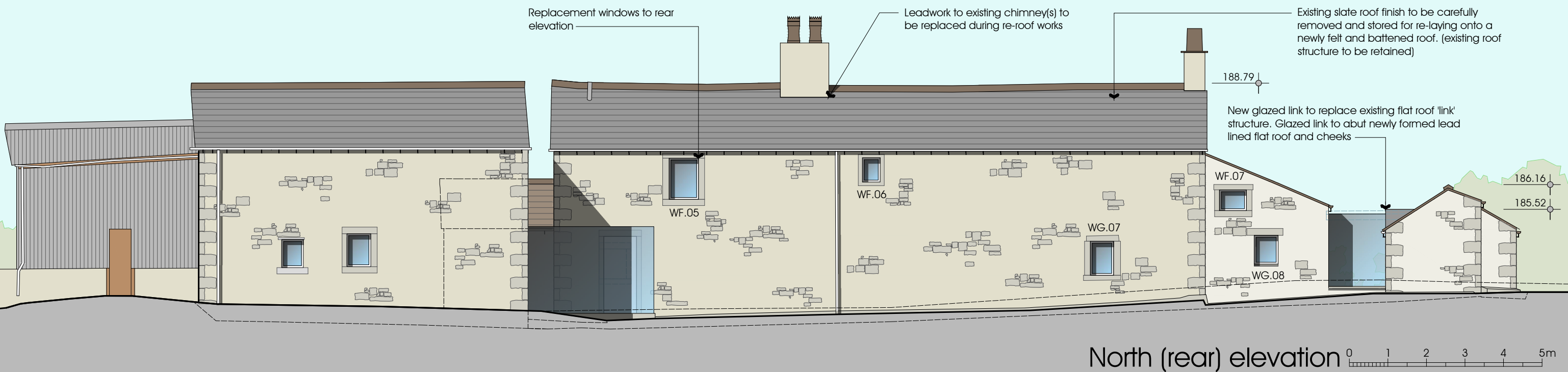


Section D-D

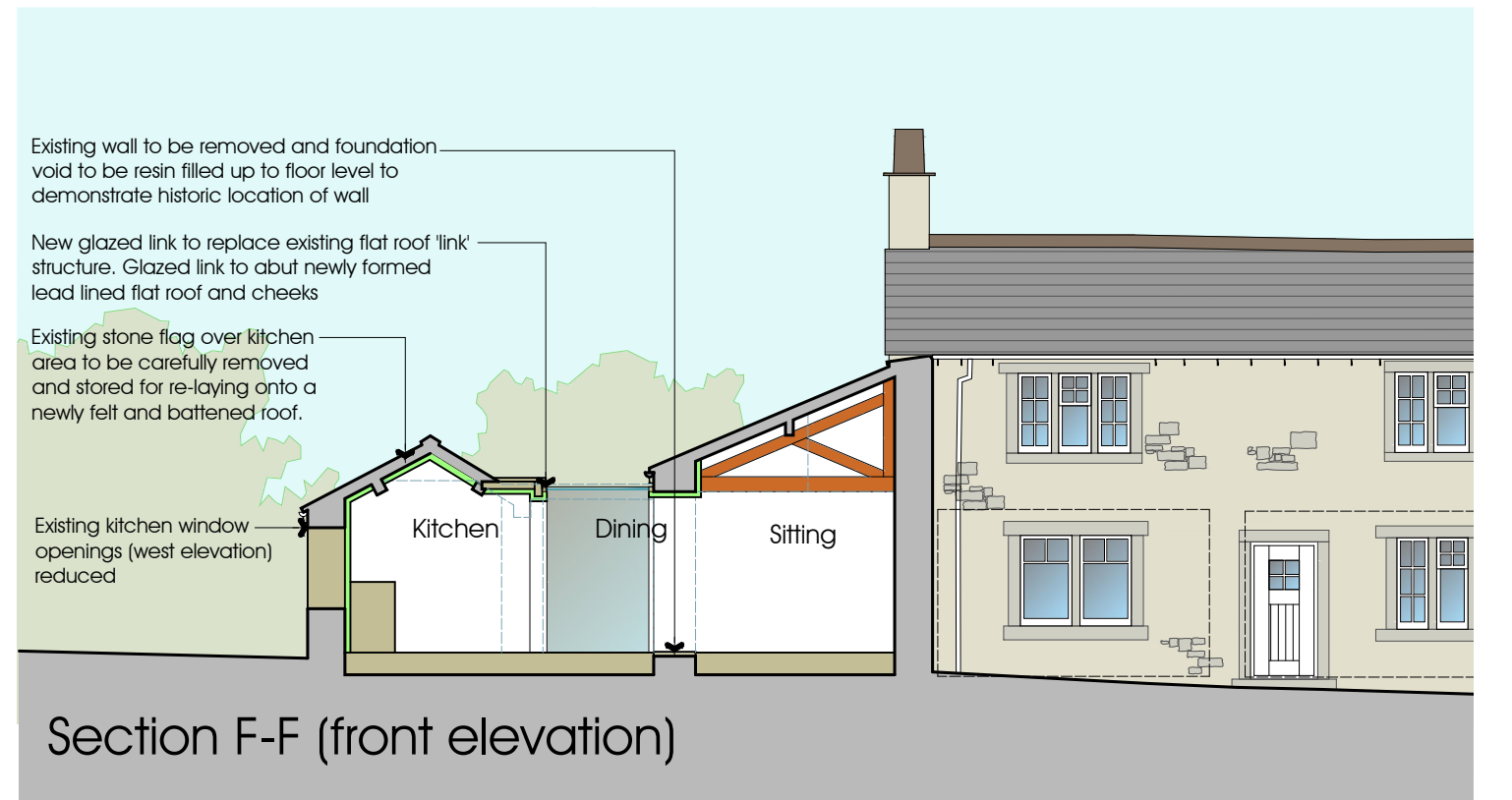
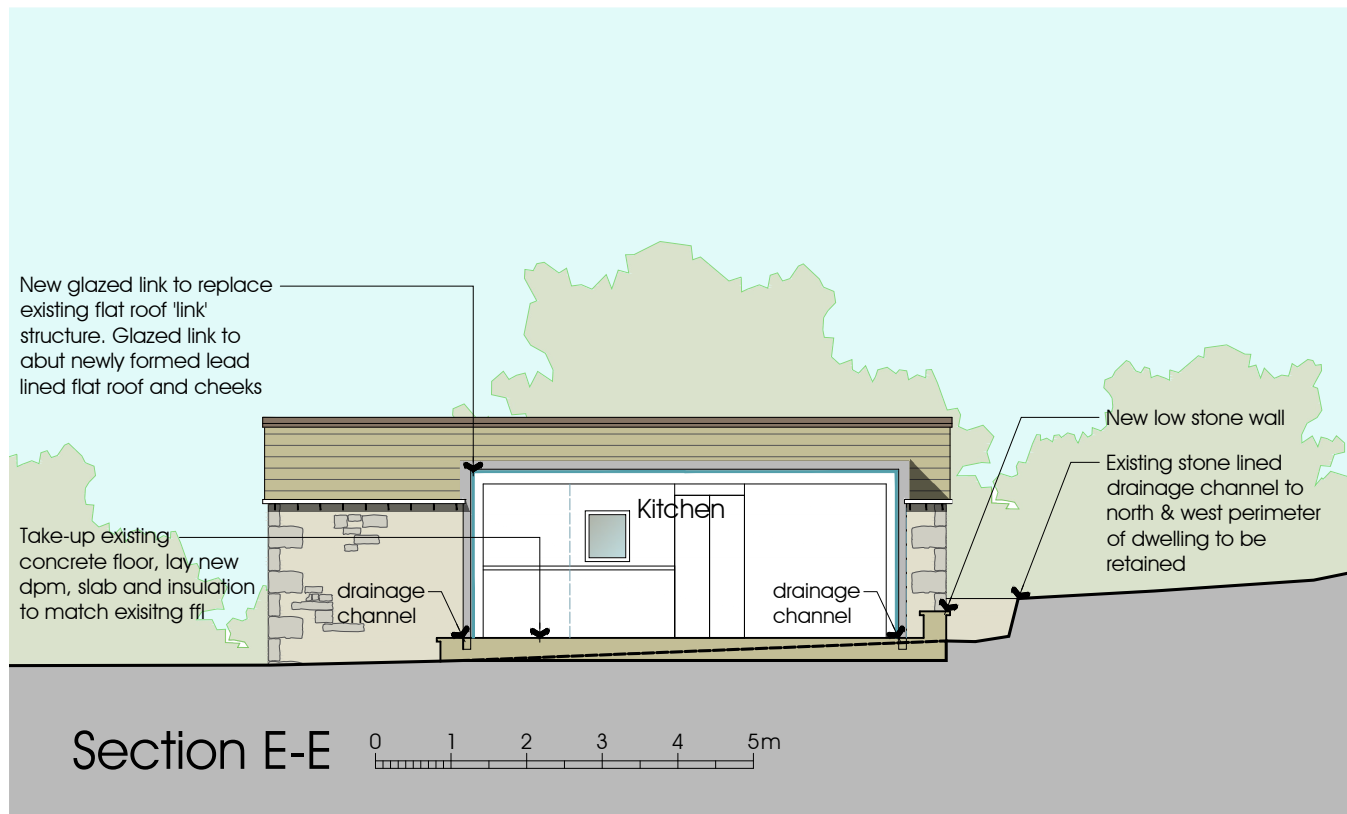
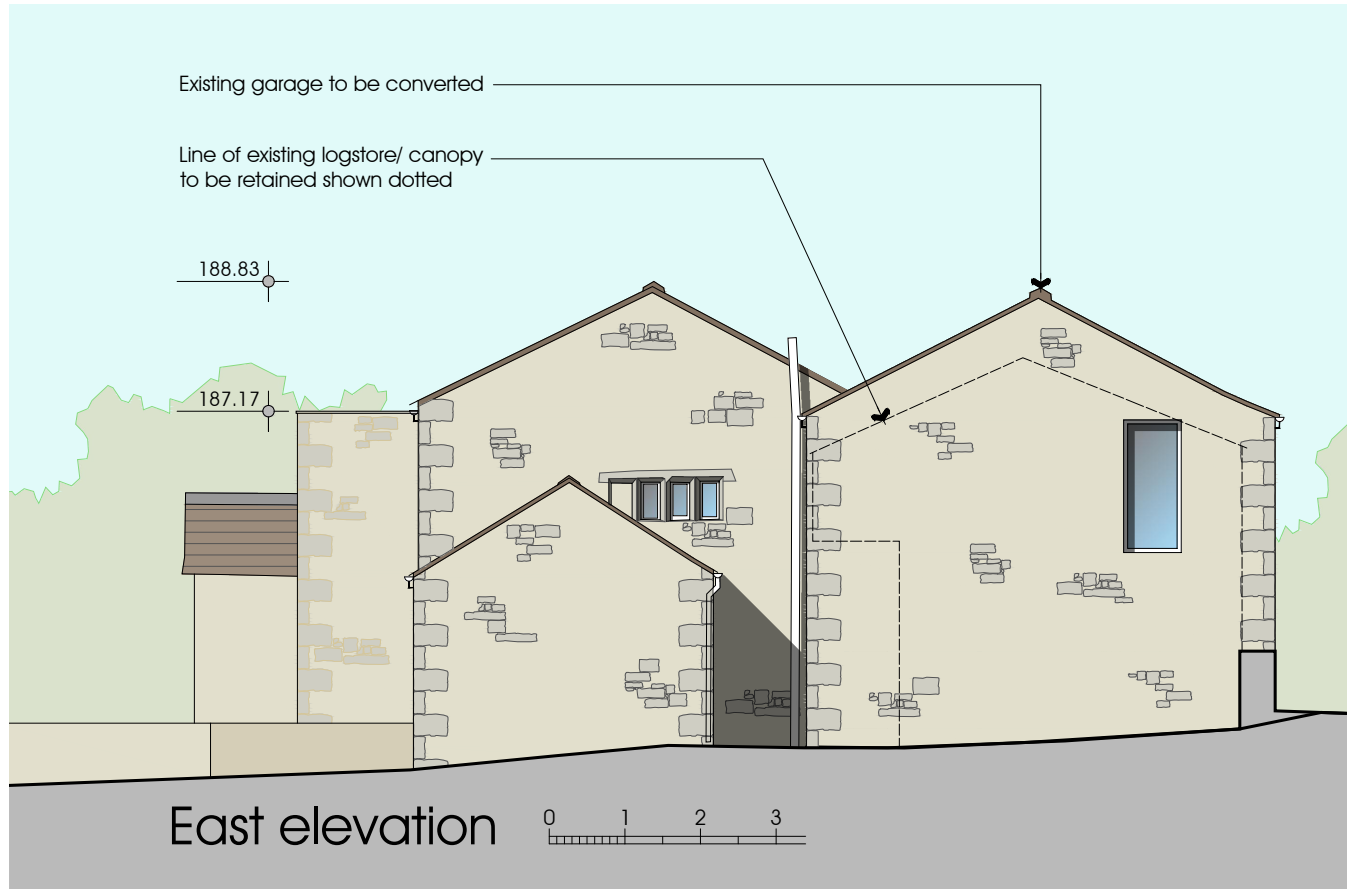
NOTES:
 1: Do not scale this drawing, use figured dimensions only 2: The Contractor, Sub Contractor or specialist supplier are responsible for confirming site dimensions prior to fabrication 3: Any dimensional discrepancies are to be reported to the Architect immediately



South (front) elevation 0 1 2 3 4 5m



North (rear) elevation 0 1 2 3 4 5m



NOTES:
 1: Do not scale this drawing, use figured dimensions only 2: The Contractor, Sub Contractor or specialist supplier are responsible for confirming site dimensions prior to fabrication 3: Any dimensional discrepancies are to be reported to the Architect immediately

