

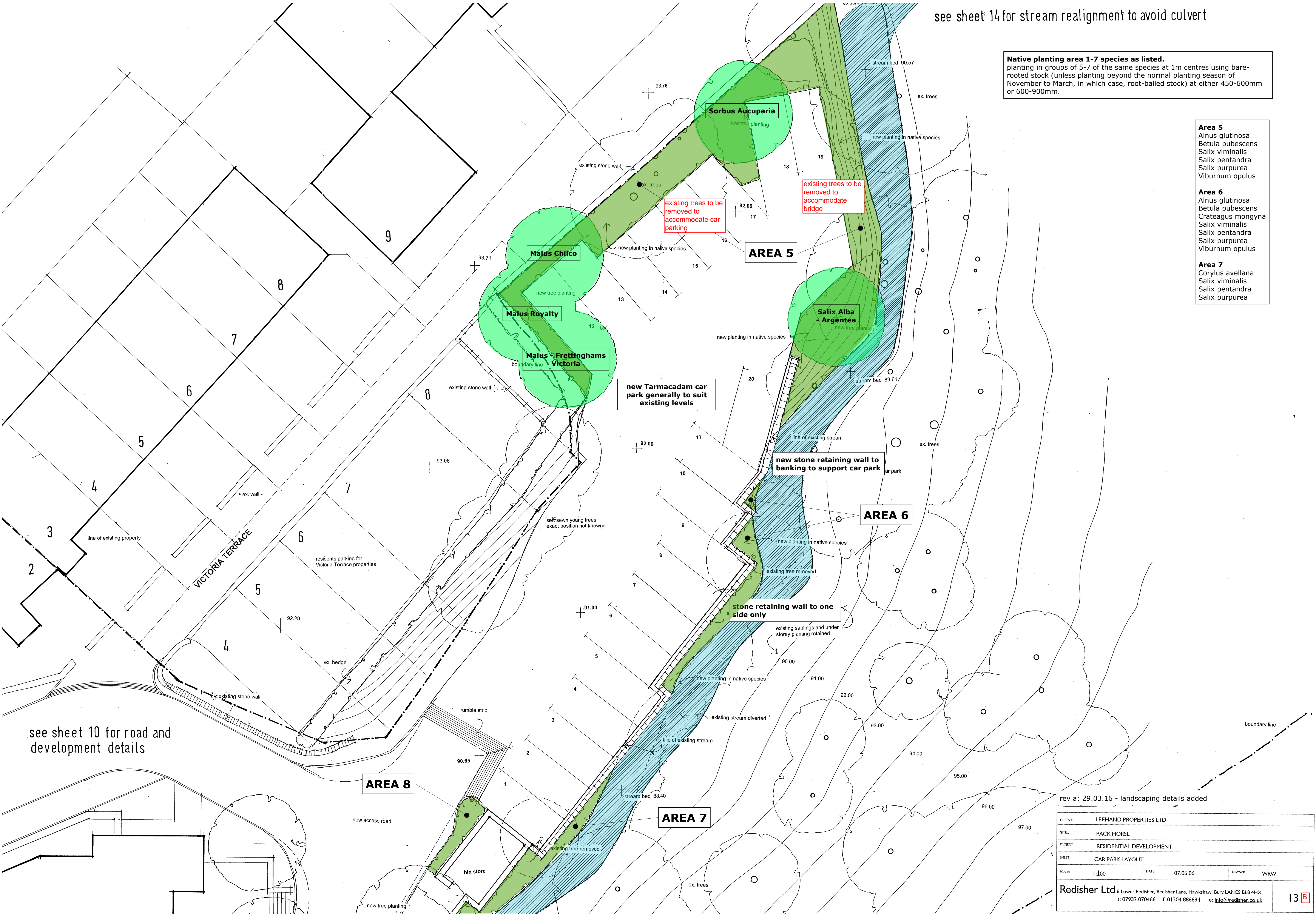
see sheet 14 for stream realignment to avoid culvert

Native planting area 1-7 species as listed.
planting in groups of 5-7 of the same species at 1m centres using bare-rooted stock (unless planting beyond the normal planting season of November to March, in which case, root-balled stock) at either 450-600mm or 600-900mm.

Area 5
Alnus glutinosa
Betula pubescens
Salix viminalis
Salix pentandra
Salix purpurea
Viburnum opulus

Area 6
Alnus glutinosa
Betula pubescens
Crateagus mongyna
Salix viminalis
Salix pentandra
Salix purpurea
Viburnum opulus

Area 7
Corylus avellana
Salix viminalis
Salix pentandra
Salix purpurea



see sheet 10 for road and development details

rev a: 29.03.16 - landscaping details added

CLIENT:	LEEHAND PROPERTIES LTD		
SITE:	PACK HORSE		
PROJECT:	RESIDENTIAL DEVELOPMENT		
SHEET:	CAR PARK LAYOUT		
SCALE:	1:100	DATE:	07.06.06
		DRAWN:	WRW
Redisher Ltd 6 Lower Redisher, Redisher Lane, Hawkshaw, Bury LANCs BL8 4HX t: 07932 070466 f: 01204 886694 e: info@redisher.co.uk			
			13