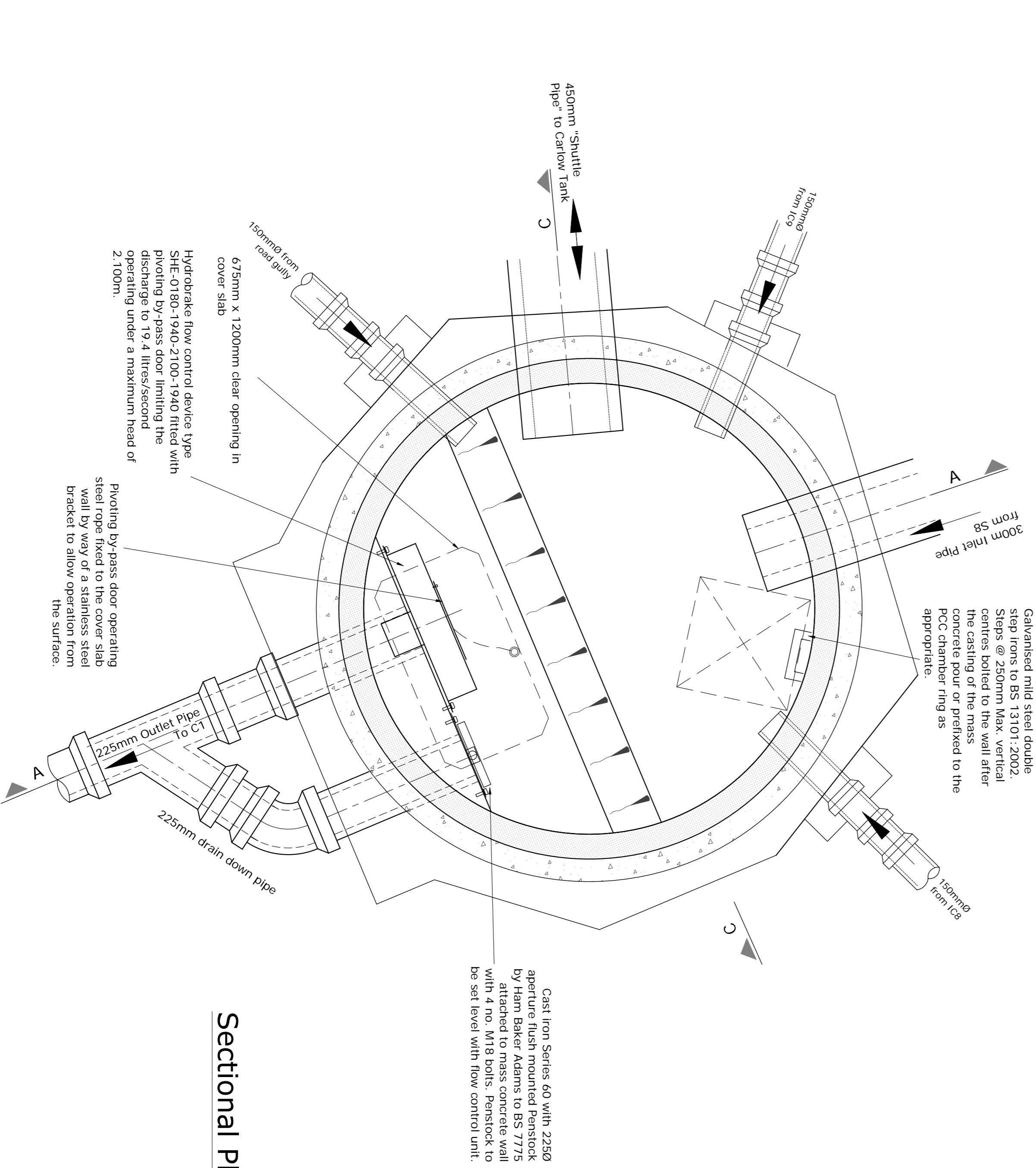
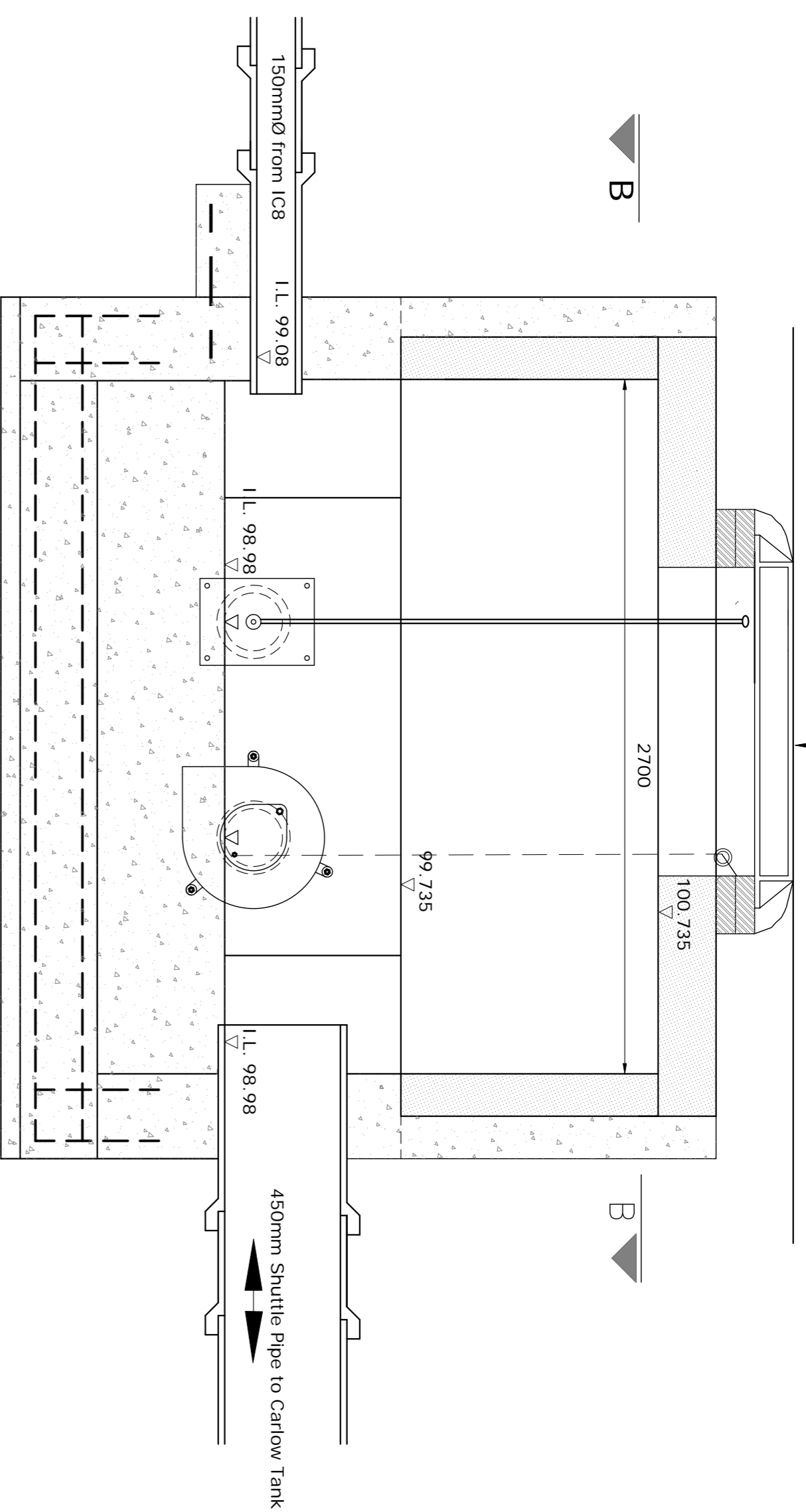
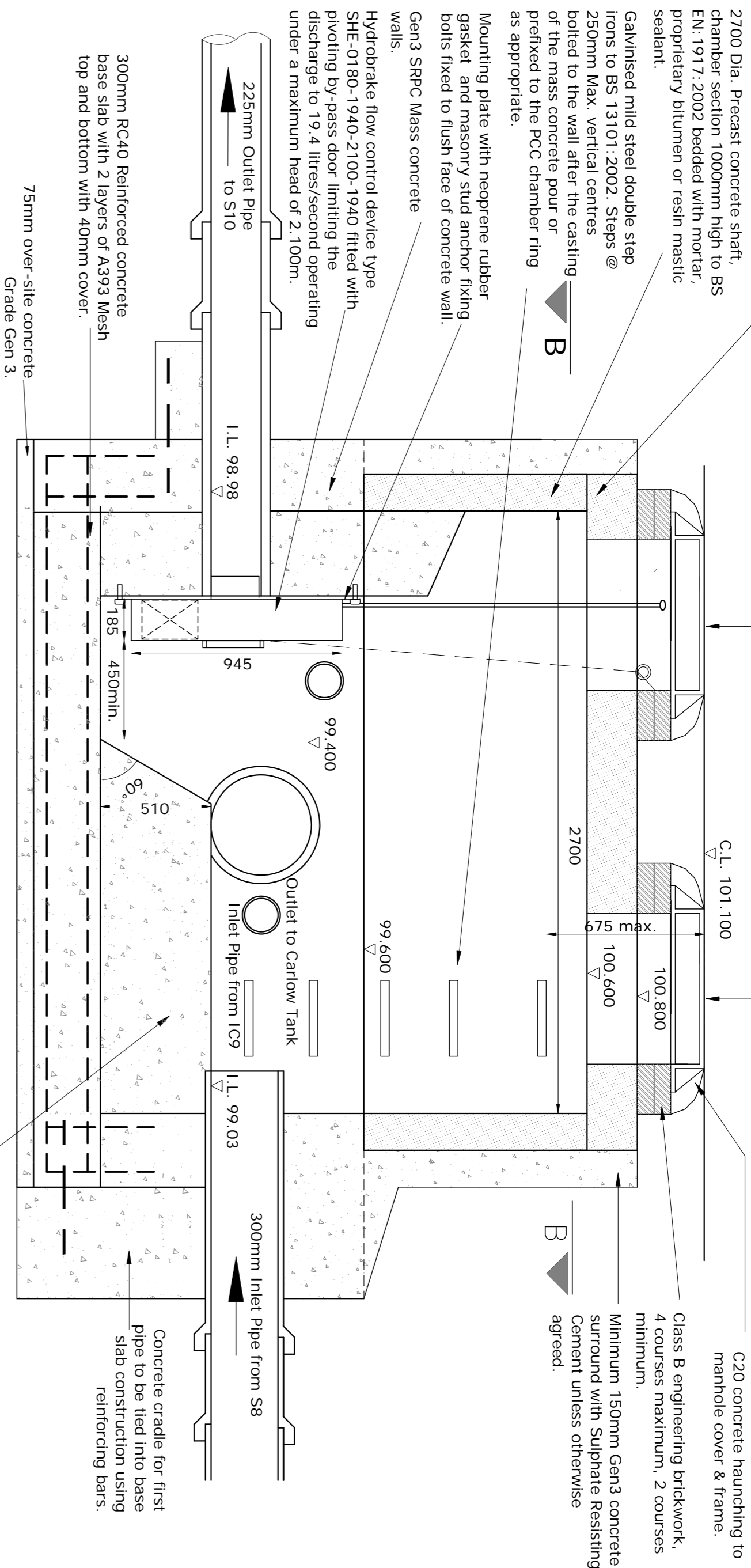


Reinforced concrete cover slab to BS EN 1917:2002 and carry BS1 Kitemark bedded with mortar, proprietary bitumen or resin mastic sealant.

Cover and frame to be Class D400 150mm deep in highways to BS EN 124 having 675 X 1200 clear opening.

Cover and frame to be Class D400 150mm deep in highways to BS EN 124 having 675 X 675 clear opening.

Cover and frame to be Class D400 150mm deep in highways to BS EN 124 having 675 X 1200 clear opening.



NOTES:

- Manholes, sewers etc. and any other part of the works intended for adoption under a Section 104 Agreement or gullies etc. intended for adoption as Highway Drainage are to be constructed in accordance with the W.A. specification. Sewers for private drainage are to be constructed in accordance with the Adopting Authority and the local Council.
- Undeveloped RW and SW drainage is to be constructed in accordance with the Building Regulations, BS 8301 and relevant Agreement Certificates.
- All private drainage to be 100mm unless indicated otherwise: be 150mmØ/rim).
- Private drainage with less than 0.9m of cover in drives and car parks are to have minimum 150mm concrete bed and SRPC walls.
- Private Drains are to be constructed using flexibly-jointed vitrified clay pipes to BS 65 Spigot Strength Specification and Building Drainage system pipe work to EN 1401-1, bedded and back filled in accordance with the manufacturers instructions and the specifications listed in Note 2.
- Backfilling of drain trenches adjacent to dwellings or other structures to be in accordance with BS 8301-Fig 9.
- Access fittings and inspection chambers less than 1m deep are the depth and number of connections. Chambers greater than 1.2m deep are to be of pre-cast concrete construction with 150mm in-situ concrete surround, or polypropylene reduced access systems with 150mm Ø of BS 8301.
- Cover levels indicated on the drawing are nominal and may be adjusted to suit finished ground levels as necessary. Private structures to be in accordance with BS 8301-Fig 9.
- Rainwater down pipes to be connected direct to drain using an approved adaptor and removable section of down pipe to permit roading access.
- Where drains pass through foundations or other rigid structures, a liner or sleeve is to be used and provision for flexibility is to be made with 'rocker' pipes.
- The positions of SVPs, stub-stacks, W.C. outlets etc. and rainwater down pipes are to be accurately located from the house-type working drawings.
- Gullies situated in areas accessible to wheeled vehicles are to be of suitable construction. Typically Hipswath square gully ref. S502/1 with drawway grating ref. 112C for a single private drain. Details of gully construction are given in detail shown on ID Civils Design drawing number 4663-C-D3-01.
- Drains within areas of "made ground" to be constructed by first excavating through the fill material into undisturbed ground. The drain trench is then to be back filled to formation level using suitable granular fill material well-compacted in layers not exceeding 225mm.
- Drains to be constructed under dwellings with suspended floor slabs should either be installed using a proprietary hanger system where 'beam and pot' or similar construction is used, concrete ground slabs are to be poured in-situ.
- Finished ground levels have been prepared assuming that the level threshold to the building is in accordance with part M4 of the Building Regulations, is at the front of the property unless otherwise stated.
- For all details of fences/walls and enclosures refer to architect for details.

Rev	Description	By	Date
B	ISSUED FOR CONSTRUCTION	AH	05-07-17
A	Cover level (and relative levels) revised AH	JD	06-17

HILLCREST HOMES	
Project Title:	
WHALLEY ROAD, HURST GREEN	
Drawing Title:	
MANHOLE S9 CONSTRUCTION DETAILS	
Scale	Date
1:20 @ A1	OCTOBER 2016
Drawing No	Revision
4663-C-D4-03	B
	CONSTR.

Geo Structures

North East & Yorkshire:
Akele Stables, Akele, Richmond, North Yorkshire, YO10 5HG
T: 01565 740283 F: 01565 740283

North West & Midlands:
Chalderton House, 6d, Cheshire, WA9 6 6AF
T: 01565 755557 F: 01565 740283

ID Civils Design Consulting Engineers

DRAINAGE CONSTRUCTION DETAILS
For construction details of all main drainage, refer to United Utilities Standard details STND/19/001 to STND/19/012
Link: <http://www.unitedutilities.com/documents/developer-services-construction-details.pdf>