

Appendix 1: Photographic archive

Photo No.	Direction	Interior/ Exterior	Building	Floor	Description
1	W	E	B		Gable end elevation, 1m scale
2	W	E	B		Window in gable end, 1m scale
3	W	E	B		Area of mortared wall on gable end, 1m scale
4	N	E	B		South facing elevation of eastern off-shot building (toilet), 1m scale
5	W	E	B		East facing elevation of eastern off-shot building (toilet), 1m scale
6	W	I	B		Internal view of off-shot building (toilet), 1m scale
7	N	I	B		Window within of off-shot building (toilet), 0.5m scale
8	W	E	B		Chimney on building (east end)
9	NE	E	B		Eastern end of building, 1m scale
10	N	E	B		Door/entrance to building at eastern end, 1m scale
11	N	E	B		Window detail, ground floor, 1m scale
12	N	E	B		Window detail, first floor
13	W	E	B		Oblique view of south facing elevation showing plastic drainpipe, 1m scale
14	N	E	B		South facing elevation, 1m scale
15	N	E	B		Blocked-up feature, south facing elevation, 1m scale
16	N	E	B		Iron feature and blocked-up window(?), south facing elevation
17	N	E	B		Detail of blocked-up window(?), south facing elevation
18	N	E	B		Window detail, ground floor, 1m scale
19	N	E	B		Worked stone (lintel) at base of south facing elevation, 0.5m scale
20	N	E	B		Bricked up feature, south facing elevation, 0.5m scale
21	N	E	B		Window detail, ground floor, 1m scale
22	N	E	B		Window detail, first floor
23	N	E	B		Window detail, ground floor, 0.5m scale
24	N	E	B		Window detail, first floor
25	N	E	B		Window detail, ground floor, 0.5m scale
26	N	E	B		Lintel above blocked up area
27	N	E	B		Window detail, first floor
28	N	E	B		Window detail, ground floor, 1m scale
29	N	E	B		Window detail, first floor
30	W	E	E		East facing elevation of off shot building, 1m scale
31	W	E	E		Bricked up entrance on east facing elevation, 1m scale
32	W	E	E		Metal object above bricked up entrance
33	W	E	E		Entrance on east facing elevation, 1m scale
34	W	E	E		Metal object above entrance
35	N	E	E		South facing elevation of off shot building, 1m scale
36	N	E	E		Opening in south facing elevation of off shot building, 0.5m scale
37	W	E	E		East facing elevation of building, 1m scale
38	W	E	E		East facing elevation of building, northern end, 1m scale
39	S	E	E		East facing elevation of building, from northern end, 1m scale
40	S	E	F		North facing elevation showing chimney, 1m scale
41	E	E	C		West facing elevation, 1m scale
42	E	E	C		West facing elevation detail showing stone beneath cladding, 0.5m scale
43	S	E	C		North facing elevation western end, 1m scale
44	SE	E	C		General view of building from the northwest, 1m scale
45	E	E	C		North facing elevation from northwest corner of building, 1m scale
46	SW	E	C		General view of building from the northeast, 1m scale
47	S	E	C		North facing elevation from northeast corner of yard
48	SW	E	C		North facing elevation, central section, 1m scale
49	S	E	C		Door, 1m scale
50	S	E	C		Window, 1m scale
51	S	E	C		Central door within modern extension, central section, of north facing elevation 1m scale

Photo No.	Direction	Interior/ Exterior	Building	Floor	Description
52	W	E	C		East facing elevation of modern extension, 1m scale
53	S	E	C		North facing elevation, eastern end, 1m scale
54	S	E	C		Modern entrance in previous arched window, eastern end, 1m scale
55	S	E	C		Wall detail, eastern end, 1m scale
56	S	E	C		North facing elevation showing blocked up arch windows and metal vent, eastern end, 1m scale
57	SW	I	B	1	Roofline view of Buildings E and F from upstairs window
58	NE	I	B	1	View of room, 1m scale
59	SE	I	B	1	View of room, 1m scale
60	E	I	B	1	Fire exit, northeast corner, 1m scale
61	W	I	B	1	Floor joist detail, 1m scale
62	N	I	B	1	Floor joist detail, 1m scale
63	E	I	B	1	Floor joist detail, 1m scale
64	S	I	B	1	Window detail, 1m scale
65	N	I	B	1	Roof rafters detail
66	W	I	B	1	Timber roof structure details
67	W	I	B	1	Timber roof structure details
68	W	I	B	1	Timber roof structure details
69	W	I	B	1	Timber roof structure details
70	W	I	B	1	Timber roof structure details
71	W	I	B	1	Timber roof structure details
72	W	I	B	1	Timber roof structure details
73	W	I	B	1	Timber roof structure details
74	W	I	B	1	Timber roof structure details
75	W	I	B	1	Timber roof structure details
76	W	I	B	1	Timber roof structure details
77	W	I	B	1	Timber roof structure details
78	W	I	B	1	Timber roof structure details
79	W	I	B	1	Timber roof structure details
80	W	I	B	1	Timber roof structure details
81	W	I	B	1	Timber roof structure details
82	W	I	B	1	Timber roof structure details
83	W	I	B	1	Timber roof structure details
84	W	I	B	1	Timber roof structure details
85	W	I	B	1	Metal eyelets in east facing wall
86	W	I	B	1	Metal eyelets in east facing wall, detail
87	SW	I	B	1	View of room, 1m scale
88	NW	I	B	1	View of room, 1m scale
89	W	I	B	1	Top of staircase, western end of room, 1m scale
90	SW	I	B	1	Roofline view of Buildings E and F from upstairs window
91	W	I	B	1	Top of staircase, western end of room, 1m scale
92	N	I	B	G	Staircase, 1m scale
93	W	I	B	G	Bottom of staircase, 1m scale
94	S	I	B	G	Corridor at bottom of stairs, looking toward entrance to building E off shot building, 1m scale
95	N	I	B	G	Corridor at bottom of stairs, 1m scale
96	E	I	B	G	Central corridor, 1m scale
97	E	I	B	G	Roof detail, from corridor
98	S	I	B	G	Underside of stairs, 1m scale
99	E	I	B	G	Room 1, 1m scale
100	S	I	B	G	Room 1, ceiling detail
101	N	I	B	G	Room 1, window detail
102	W	I	B	G	Room 1, ceiling detail
103	SW	I	B	G	Room 2, 1m scale
104	W	I	B	G	Room 2, ceiling detail
105	N	I	B	G	Room 2, ceiling detail
106	SE	I	B	G	Room 4, 1m scale
107	SE	I	B	G	Room 4, 1m scale
108	E	I	B	G	Room 4, 1m scale
109	E	I	B	G	Room 4, ceiling detail

Photo No.	Direction	Interior/ Exterior	Building	Floor	Description
110	NW	I	B	G	Room 3, 1m scale
111	W	I	B	G	Room 3, ceiling detail
112	E	I	B	G	Room 3, ceiling detail
113	S	I	B	G	Sink area in corridor, 1m scale
114	NW	I	B	G	Room 5, 1m scale
115	E	I	B	G	Room 5, ceiling detail
116	E	I	B	G	Room 6, 1m scale
117	SE	I	B	G	Room 7, 1m scale
118	NW	I	B	G	Room 7, 1m scale
119	N	I	B	G	Ceiling detail showing modern joists, Room 7
120	SE	I	B	G	Blocked up fireplace, Room 8, 1m scale
121	NW	I	B	G	Room 8, 1m scale
122	S	I	B	G	Room 8, 1m scale
123	SE	I	B	G	Room 9, 1m scale
124	NW	I	B	G	Room 9, 1m scale
125	W	E	C		Gable end elevation, 1m scale
126	W	E	C		Drain pipe, gable end, 1m scale
127	W	E	C		Window detail
128	NW	E	C		Drain pipe detail
129	SW	E	C		Gable end elevation, 1m scale, oblique view
130	W	E			Blocked up window, mill wall, Watt Street, 1m scale
131	W	E			Blocked up window, mill wall, Watt Street, 1m scale
132	W	E			Blocked up entrance, mill wall, Watt Street, 1m scale
133	W	E			Blocked up window, mill wall, Watt Street, 1m scale
134	W	E			Blocked up window, mill wall, Watt Street, 1m scale
135	NE	E	C		South facing elevation, 1m scale, oblique view
136	N	E	C		South facing elevation, 1m scale
137	NW	E	F		East facing elevation, 1m scale, oblique view
138	W	E	F		East facing elevation, blocked up entrance, 1m scale
139	NW	E	F		East facing elevation, 1m scale, oblique view
140	W	E	F		South facing elevation, 1m scale, oblique view
141	SE	I	E	G	Entrance and internal division, off shot building, 2m scale
142	SE	I	E	G	Doors to Buildings B and E, off shot building, 2m scale
143	N	I	E	G	Window detail, off shot building
144	NE	I	E	G	Internal division, off shot building, 1m scale
145	SW	I	E	G	Entrance to south, off shot building, 1m scale
146	N	I	E	G	Window detail, off shot building
147	SE	I	E	G	Extractor fan, off shot building, 1m scale
148	NW	I	E	G	Entrances to north and Building E, off shot building, 1m scale
149	W	I	E	G	Entrance Building E, off shot building, 1m scale
150	W	I	E	G	Room 1, 2m scale
151	W	I	E	G	Iron pillar detail, Room 1, 2m scale
152	W	I	E	G	Bricked up entrance to Building D, Room 1, 2m scale
153	W	I	E	G	Entrance to Building D, Room 1, 2m scale
154	N	I	E	G	Entrance to Building D, Room 1, 2m scale
155	N	I	E	G	Entrance to Building D, Room 1, 2m scale
156	N	I	E	G	South facing elevation, bricked up entrance to Building A and probable extension to west, Room 1, 2m scale
157	N	I	E	G	South facing elevation, bricked up window to Building A and probable extension to east, Room 1, 2m scale
158	N	I	E	G	South facing elevation detail, Room 1, 2m scale
159	N	I	E	G	South facing elevation detail, Room 1, 2m scale
160	E	I	E	G	Entrance to off shot, Room 1, 2m scale
161	N	I	E	G	Steps to off shot, Room 1, 2m scale
162	E	I	E	G	Room 1, 2m scale
163	SE	I	E	G	Room 1, 2m scale
164	S	I	E	G	Modern breeze block dividing wall, north facing elevation, Room 1, 2m scale
165	W	I	E	G	Modern breeze block dividing wall, east facing elevation, Room 1, 2m scale

Photo No.	Direction	Interior/ Exterior	Building	Floor	Description
166	SW	I	E	G	Modern breeze block dividing wall, forming Room 2 from Room 1, 2m scale
167	W	I	E	G	Room 2, 2m scale
168	S	I	E	G	Entrance to Room 3 from Room 2, 2m scale
169	E	I	E	G	Room 2, 2m scale
170	N	I	E	G	Notice on wall, Room 2, 2m scale
171	SW	I	F	G	General view
172	W	I	F	G	Entrance to toilets in east facing elevation, 2m scale
173	SW	I	F	G	Toilets, 2m scale
174	S	I	F	G	Toilets, 2m scale
175	W	I	F	G	Toilets, 2m scale
176	NW	I	F	G	Toilets, 2m scale
177	W	I	F	G	Entrance to toilets in east facing elevation, 2m scale
178	W	I	F	G	Wooden feature and roof detail, east facing elevation, 2m scale
179	NW	I	F	G	Toilets, 2m scale
180	N	I	F	G	Toilets, 2m scale
181	E	I	F	G	Dryer in toilets, 2m scale
182	W	I	F	G	Industrial piping, 2m scale
183	W	I	F	G	Industrial piping detail, 2m scale
184	W	I	F	G	Opening within east facing elevation, 2m scale
185	NE	E	F		South facing elevation
186	N	E	F		West facing elevation, oblique view, 2m scale
187	NE	E	F		West facing elevation, oblique view, 2m scale
188	NE	E	F		West facing elevation, oblique view, 2m scale
189	E	E	E/F		West facing elevation, 2m scale
190	E	E	E/F		West facing elevation, 2m scale
191	SE	E	F		West facing elevation, oblique view, 2m scale
192	E	E	E		West facing elevation, 2m scale
193	N	E	D		South facing elevation
194	NE	E	E		Culvert, 2m scale
195	E	E	E		Culvert
196	E	E	E		Culvert detail
197	N	E	E		Culvert detail
198	SE	I	F	G	Winch, 2m scale
199	S	I	F	G	Winch area, 2m scale
200	W	I	F	G	Winch area, 2m scale
201	E	I	F	G	General view, 2m scale
202	S	I	F	G	Fire alarm
203	SE	I	F	G	General view, 2m scale
204	E	I	F	G	General view, 2m scale
205	NE	I	F	G	General view, 2m scale
206	E	I	F	G	Iron door within west facing elevation
207	N	I	F	G	General view, 2m scale
208	N	I	F	G	Entrance to Building C, 2m scale
209	N	I	F	G	South facing elevation adjacent to chimney, 2m scale
210	E	I	F	G	West facing elevation adjacent to entrance to Building C, 2m scale
211	N	I	F	G	Chimney, 2m scale
212	N	I	F	G	Chimney detail, 2m scale
213	NE	I	F	G	Chimney, 2m scale
214	NE	I	F	G	Chimney detail, 2m scale
215	E	I	F	G	Chimney, 2m scale
216	SE	I	F	G	Chimney, 2m scale
217	E	I	F	G	Chimney, 2m scale
218	E	I	F	G	Base of chimney, 2m scale
219	E	I	F	G	General view, 2m scale
220	E	I	F	G	General view, 2m scale
221	E	I	F	G	General view, 2m scale
222	NE	I	F	G	General view, 2m scale
223	NW	I	D	G	General view, 2m scale

Photo No.	Direction	Interior/ Exterior	Building	Floor	Description
224	W	I	D	G	General view, 2m scale
225	N	I	D	G	South facing elevation, 2m scale
226	N	I	D	G	Furnace/oven?, 2m scale
227	W	I	D	G	Furnace/oven?, 2m scale
228	SW	I	D	G	General view, 2m scale
229	W	I	D	G	General view, 2m scale
230	S	I	D	G	North facing elevation, 2m scale
231	S	I	D	G	North facing elevation, 2m scale
232	E	I	D	G	Entrance to Building E in west facing elevation, 2m scale
233	E	I	D	G	Entrance to Building A in west facing elevation, 2m scale
234	W	I	A	G	Stairs to first floor, 2m scale
235	W	I	A	G	Door at top of stairs, 2m scale
236	E	I	A	1	Stairs to ground floor
237	W	I	A	1	East facing elevation, 2m scale
238	NW	I	A	1	General view, 2m scale
239	NW	I	A	1	General view, 2m scale
240	W	I	A	1	Blocked up feature in east facing elevation, 2m scale
241	W	I	A	1	Blocked up feature (window?) in east facing elevation, 2m scale
242	N	I	A	1	Window, south facing elevation, 2m scale
243	N	I	A	1	Window, south facing elevation, 0.5m scale
244	N	I	A	1	Doors, south facing elevation, 2m scale
245	N	I	A	1	Window, south facing elevation, 2m scale
246	N	I	A	1	Metal bracket, south facing elevation
247	N	I	A	1	South facing elevation, oblique view, 2m scale
248	NE	I	A	1	General view, 2m scale
249	N	I	A	1	Window, south facing elevation, 2m scale
250	N	I	A	1	Probable bearing box, south facing elevation
251	W	I	A	1	East facing elevation, 2m scale
252	N	I	A	1	South facing elevation, 2m scale
253	NE	I	A	1	General view, 2m scale
254	E	I	A	1	West facing elevation, 2m scale
255	E	I	A	1	Door, west facing elevation, 2m scale
256	E	I	A	1	Flooring detail, 2m scale
257	S	I	A	1	North facing elevation, oblique view, 2m scale
258	SW	I	A	1	North facing elevation, oblique view, 2m scale
259	SW	I	A	1	General view, 2m scale
260	S	I	A	1	Stairs entrance, 2m scale
261	S	I	A	1	Bearing box above stairs entrance, north facing elevation
262	S	I	A	1	Metal brackets, north facing elevation
263	S	I	A	1	Window, north facing elevation, 2m scale
264	S	I	A	1	Window, north facing elevation, 2m scale
265	S	I	A	1	Flooring adjacent to north facing elevation, 2m scale
266	S	I	A	1	Roofline view of Buildings E and F from upstairs window
267	E	I	A	1	Roofline view of Buildings E and F from upstairs window
268	E	I	A	1	Roofline view of Buildings C, E and F and chimney from upstairs window
269	SE	I	A	1	Roofline view of Buildings C, E and F and chimney from upstairs window
270	W	I	A	1	Roof detail
271	N	I	A	G	Blocked up window, Room 2, 2m scale
272	E	I	A	G	Windows in west facing elevation, Room 2, 2m scale
273	S	I	A	G	Bottom of stairs area, Room 2, 2m scale
274	S	I	A	G	Metal bracket on north facing elevation, Room 2
275	S	I	A	G	Bolts on north facing elevation, Room 2
276	E	I	A	G	Windows in west facing elevation, Room 2, 1m scale
277	N	I	A	G	Blocked up window, Room 2
278	NW	I	A	G	Entrance to Room 1, south facing elevation, Room 2, 2m scale
279	W	I	A	G	General view, Room 2, 2m scale
280	N	I	A	G	Exposed stone work, Room 2
281	N	I	A	G	Entrance to Room 1, south facing elevation, Room 2, 2m scale

Photo No.	Direction	Interior/ Exterior	Building	Floor	Description
282	NW	I	A	G	Entrance to Room 1, south facing elevation, Room 2, 2m scale
283	NE	I	A	G	Blocked up entrance to Room 3, south facing elevation, Room 2, 2m scale
284	N	I	A	G	Blocked up entrance to Room 3, south facing elevation, Room 2, 2m scale
285	W	I	A	G	East facing elevation and entrance to Building D, Room 2, 2m scale
286	SW	I	A	G	General view and entrance to Building D, Room 2, 2m scale
287	S	I	A	G	Wall detail, north facing elevation, Room 2, 2m scale
288	SE	I	A	G	North facing elevation, oblique view, Room 2, 2m scale
289	E	I	A	G	General view, Room 2, 2m scale
290	S	I	A	G	Blocked up entrance to Building E, north facing elevation, Room 2, 2m scale
291	S	I	A	G	Metal bolts, north facing elevation, Room 2
292	S	I	A	G	Metal bracket, north facing elevation, Room 2
293	SE	I	A	G	View of under stairs, north facing elevation, Room 2, 2m scale
294	E	I	A	G	View of under stairs, Room 2, 2m scale
295	S	I	A	G	Blocked up window to Building E, north facing elevation, Room 2, 2m scale
296	NE	I	A	G	General view, Room 1, 2m scale
297	E	I	A	G	West facing elevation, Room 1, 2m scale
298	E	I	A	G	West facing elevation, Room 1, 2m scale
299	E	I	A	G	Window, west facing elevation, Room 1, 0.5m scale
300	E	I	A	G	Fuse box, west facing elevation, Room 1
301	E	I	A	G	Window, west facing elevation, Room 1, 0.5m scale
302	E	I	A	G	Blocked up opening, west facing elevation, Room 1
303	SW	I	A	G	North facing elevation, oblique view, Room 1, 2m scale
304	S	I	A	G	North facing elevation, Room 1, 2m scale
305	S	I	A	G	Blocked up window to Room 2, north facing elevation, Room 1
306	S	I	A	G	Entrance to Room 2, north facing elevation, Room 1, 2m scale
307	S	I	A	G	North facing elevation detail, Room 1, 2m scale
308	S	I	A	G	Entrance to Room 2, north facing elevation, Room 1, 2m scale
309	S	I	A	G	Bearing box above entrance to Room 2, north facing elevation, Room 1
310	S	I	A	G	Entrance to Room 2, north facing elevation, Room 1, 2m scale
311	W	I	A	G	General view, Room 1, 2m scale
312	W	I	A	G	East facing elevation, Room 1, 2m scale
313	W	I	A	G	East facing elevation detail, Room 1
314	W	I	A	G	East facing elevation feature, Room 1
315	SW	I	A	G	East facing elevation feature, oblique view, Room 1, 2m scale
316	N	I	A	G	Roller shutter entrance, south facing elevation, Room 1, 2m scale
317	W	I	A	G	East facing elevation, Room 1, 2m scale
318	N	I	A	G	Window, south facing elevation, Room 1, 0.5m scale
319	N	I	A	G	Door, south facing elevation, Room 1, 2m scale
320	NE	I	A	G	South facing elevation, oblique view, Room 1, 2m scale
321	N	I	A	G	Blocked up windows, south facing elevation, oblique view, Room 1, 2m scale
322	N	I	A	G	Entrance to Room 4, south facing elevation, Room 1, 2m scale
323	N	I	A	G	Blocked up windows, south facing elevation, Room 1, 2m scale
324	N	I	A	G	View of corridor towards Room 5, Room 1, 2m scale
325	SE	I	A	G	General view, Room 4, 2m scale
326	SW	I	A	G	General view, Room 4, 2m scale
327	NE	I	A	G	South facing elevation, oblique view, Room 5, 2m scale
328	SW	I	A	G	Entrance to corridor, Room 5, 2m scale
329	S	I	A	G	View of corridor towards Room 1, Room 5, 2m scale
330	N	I	A	G	General view of south facing elevation, Room 3, 2m scale
331	N	I	A	G	Blocked up entrance, south facing elevation, Room 3, 2m scale
332	SW	I	A	G	Opening to vent, east facing elevation, oblique view, Room 3, 2m scale

Photo No.	Direction	Interior/ Exterior	Building	Floor	Description
333	NW	I	A	G	Opening to vent, east facing elevation, oblique view, Room 3, 2m scale
334	S	I	A	G	Blocked up entrance, north facing elevation, oblique view, Room 3, 2m scale
335	S	I	A	G	Blocked up entrance, north facing elevation, Room 3, 2m scale
336	N	I	A	G	Vent area, south facing elevation, Room 3, 2m scale
337	SW	I	A	G	Vent area, north facing elevation, oblique view, Room 3, 2m scale
338	W	I	A	G	Vent area, east facing elevation, Room 3, 2m scale
339	W	I	A	G	Vent area, east facing elevation, Room 3
340	E	I	A	G	Blocked up windows, vent area, west facing elevation, Room 3
341	SE	I	C	G	West facing elevation, oblique view, Room 1, 2m scale
342	SE	I	C	G	General view, Room 1, 2m scale
343	S	I	C	G	North facing elevation, Room 1, 2m scale
344	NW	I	C	G	East facing elevation, oblique view, Room 1, 2m scale
345	NW	I	C	G	General view, Room 1, 2m scale
346	N	I	C	G	South facing elevation, Room 1, 2m scale
347	E	I	C	G	Exposed stone work, west facing elevation, Room 1
348	N	I	C	G	Window, south facing elevation, Room 1, 0.5m scale
349	N	I	C	G	Gas valve, south facing elevation, Room 1
350	N	I	C	G	Doors, south facing elevation, Room 1, 2m scale
351	E	I	C	G	Entrance to Room 2, west facing elevation, Room 1, 2m scale
352	NW	I	C	G	General view, Room 2, 2m scale
353	W	I	C	G	East facing elevation, Room 2, 2m scale
354	W	I	C	G	Door to Room 1, Room 2, 2m scale
355	N	I	C	G	Door in south facing elevation, Room 2, 2m scale
356	NE	I	C	G	South facing elevation, oblique view, Room 2, 2m scale
357	N	I	C	G	Window, south facing elevation, Room 2, 0.5m scale
358	SE	I	C	G	West facing elevation, oblique view, Room 2, 2m scale
359	E	I	C	G	West facing elevation, Room 2, 2m scale
360	W	I	C	G	Roof detail, Room 2
361	S	I	C	G	North facing elevation, Room 3, 2m scale
362	S	I	C	G	North facing elevation, Room 3, 2m scale
363	N	I	C	G	South facing elevation, Room 3, 2m scale
364	N	I	C	G	South facing elevation, Room 3, 2m scale
365	S	I	C	G	Blocked up feature, north facing elevation, Room 3
366	W	I	C	G	Roof detail, Room 3
367	E	I	C	G	Wall detail, west facing elevation, Room 2
368	E	I	C	G	Blocked up entrance (?), west facing elevation, Room 2
369	E	I	C	G	Blocked up aperture, west facing elevation, Room 2, 0.5m scale
370	E	E	D		West facing elevation, 2m scale
371	S	E	D		North facing elevation, 2m scale
372	SE	E	A/D		General view, 2m scale
373	E	E	A		West facing elevation, 2m scale
374	S	E	A		North facing elevation of vent, 2m scale
375	SE	E	A		General view, 2m scale
376	S	E	A		North facing elevation showing blocked up entrance, 2m scale
377	S	E	A		Blocked up entrance, north facing elevation, 2m scale
378	S	E	A		Window, north facing elevation
379	E	E	A		Steps, north facing elevation, 2m scale
380	S	E	A		North facing elevation detail, 2m scale
381	S	E	A		Door with blocked up window above, north facing elevation
382	S	E	A		Iron bracket, north facing elevation
383	S	E	A		Window, north facing elevation
384	S	E	A		Windows, north facing elevation, 2m scale
385	SE	E	A		North facing elevation, oblique view, 2m scale
386	S	E	A		Door, north facing elevation, 2m scale
387	E	E	A		West facing elevation, 2m scale
388	SE	E	B		General view
389	W	E	A		North facing elevation Room 5, oblique view, 2m scale

Photo No.	Direction	Interior/ Exterior	Building	Floor	Description
390	SW	E	A		Entrance Room 5, north facing elevation, oblique view, 2m scale
391	SW	E	A		Window, north facing elevation, oblique view, 2m scale
392	W	E			Wall adjacent to Building A with flashing remnants, 2m scale
393	NW	E			Wall adjacent to Building A with blocked up opening, 2m scale
394	NW	E			South facing elevation of wall adjacent to Building A, oblique view, 2m scale
395	NW	E	A		Window, east facing elevation, 2m scale
396	W	E	A		Staircase, east facing elevation, 2m scale
397	W	E	A		Window, east facing elevation, 2m scale
398	W	E	A		Windows (Room 2), east facing elevation, 2m scale
399	N	E	A		Window, south facing elevation
400	N	E	A		Bearing box within blocked up window, south facing elevation
401	S	E	E		Iron bracket, north facing elevation
402	SE	E	E		North facing elevation, oblique view
403	E	E	B		West facing elevation
404	E	E	B		West facing elevation
405	W	E	A		East facing elevation, 2m scale
406	S	E	B		Window, north facing elevation
407	S	E	B		North facing elevation of toilet
408	S	E	E		North facing elevation
409	SW	E	B		General view from bridge
410	SW	E	A		General view from road
411	SW	E	A		General view from road
412	SE	E	B		General view from road
413	S	E	A		North facing elevation from road
414	SW	E			North facing elevation of wall adjacent to Building B from bridge
415	E	I	C	G	West facing elevation, Room 4, 2m scale
416	E	I	C	G	Meter, west facing elevation, Room 4, 2m scale
417	NE	I	C	G	South facing elevation, oblique view, Room 4, 2m scale
418	N	I	C	G	Iron brackets, south facing elevation, Room 4
419	NW	I	C	G	South facing elevation, oblique view, Room 4, 2m scale
420	N	I	C	G	Door within blocked up opening, south facing elevation, Room 4, 2m scale
421	N	I	C	G	Door detail, south facing elevation, Room 4, 2m scale
422	N	I	C	G	Shutter detail, south facing elevation, Room 4, 2m scale
423	W	I	C	G	East facing elevation, Room 4, 2m scale
424	SW	I	C	G	North facing elevation, oblique view, Room 4, 2m scale
425	SW	I	C	G	Steps, north facing elevation, oblique view, Room 4, 2m scale
426	E	I	C	G	West facing elevation, Room 5, 2m scale
427	SE	I	C	G	North facing elevation, oblique view, Room 5, 2m scale
428	NE	I	C	G	South facing elevation, oblique view, Room 5, 2m scale
429	N	I	C	G	South facing elevation, Room 5, 2m scale
430	W	I	C	G	East facing elevation, Room 5, 2m scale
431	NW	I	C	G	South facing elevation, oblique view, Room 5, 2m scale
432	W	I	C	G	Roof detail, Room 5, 2m scale
433	S	I	C	G	Pipe, north facing elevation, Room 5
434	NW	I	C	G	General view, Room 6, 2m scale
435	SW	I	C	G	General view, Room 6, 2m scale
436	W	I	C	G	Roof detail, Room 6, 2m scale
437	SE	I	C	G	General view, Room 6, 2m scale
438	W	I	B	1	Timber roof structure details
439	W	I	B	1	Timber roof structure details
440	W	I	B	1	Timber roof structure details
441	W	I	B	1	Timber roof structure details
442	W	I	B	1	Timber roof structure details
443	W	I	B	1	Timber roof structure details
444	W	I	B	1	Timber roof structure details
445	W	I	B	1	Timber roof structure details
446	W	I	B	1	Timber roof structure details

Photo No.	Direction	Interior/ Exterior	Building	Floor	Description
447	W	I	B	1	Timber roof structure details
448	W	I	B	1	Timber roof structure details
449	W	I	B	1	Timber roof structure details

Appendix 2: Ceramic Building Material

By Sue Anderson

Nine bricks (10 pieces, 30,513g) were recovered as samples from eight contexts during the fieldwork (Appendix 1).

The assemblage was quantified (count and weight) by fabric and form. Fabrics were identified on the basis of macroscopic appearance and main inclusions. The width, length and thickness of bricks were measured (in mm) where possible. Form terminology follows Brunskill's glossary (1990).

All nine bricks were of 19th/20th-century date and comprised machine-made compressed types typical of industrial buildings of the period in this region. Two main fabrics were identified:

comp1: dark red fireclay, hard, machine-pressed engineering bricks with fine shale particles

comp2: cream-coloured, generally with brown or orange surfaces, hard but friable, machine pressed with coarse shale, sandstone and slag/ferrous inclusions

Three bricks of 'comp1' fabric were recovered. All three had frogs, although only two had maker's marks. These latter were made in Accrington brickworks, one having a mark for Whinney Hill, Altham, and the other an 'Enfield' stamp. The Whinney Hill Plastic Brick Co. Ltd. was founded in 1896 and was taken over in 1916 by the Accrington Brick and Tile company (Brooks 2017). The Enfield Brick and TerraCotta Co. Ltd was found in 1893 and was sold to the Accrington Brick and tile company in 1938 (*ibid.*). Production of both bricks is therefore relatively closely dateable within these date ranges. Details of sizes and marks are shown in Table 1.

context	context type	length	width	height	frogs/marks
102	rubble subsoil	231	114	78	rectangular flat-based frog: [WHINN]EY HILL PLASTIC / WINIL / ...K Co ACCRINGTON; underside shallow flat-based frog WINIL
104	industrial waste	225	108	78	rectangular flat-based frog: ENFIELD / PLASTIC / ACCRINGTON; underside shallow flat-based frog
109	wall	229	110	80	rectangular V-section frog, no mark

Table 1: Descriptions and sizes of 'comp1' bricks

Six bricks of 'comp2' fabric were found. Table 2 lists their dimensions. These bricks were plain, with no frogs, and were more variable in thickness than the red bricks. Bricks of this type were made across northern Britain and southern Scotland and were often by-products of coal-mining, which produced large quantities of shale waste. Without maker's marks, identification of their source and close dating are not possible.

context	context type	length	width	height
107	wall	228	110	77
108	wall		110	72
109	wall	238	111	65
116	floor	229	110	70
205	floor	230	113	75
208	stone wall		108+	75

Table 2: Sizes of 'comp2' bricks

Four bricks had traces of mortar or other deposits on the surfaces. The 'comp1' brick from rubble 102 had patches of grey cementitious mortar, particularly within the frog. The same type of mortar was applied thickly to one surface of the 'comp2' brick in wall 109 (18mm thick) and to the headers and patchily elsewhere on the 'comp1' brick from the same context (up to 8mm thick). The latter also had a white

deposit, thicker in places, which may be the remains of a lime mortar below the cementitious layer, perhaps indicating re-use of this brick. The brick from floor 116 had brownish deposits which appeared to be overfired clay or possibly ferrous material.

References

Brooks, G., 2017, 'Lancashire bricks', *Solway Past. History in the Borders*. Available: <http://www.solwaypast.co.uk/index.php/bricks/14-brick/104-lanc-b>, accessed 12/5/18

Brunskill, R.W., 1990, *Brick Building in Britain*. Victor Gollancz Ltd, London.

Appendix 1: CBM catalogue

context	fabric	form	no	wt/g	abr	length	width	height	mortar	marks	comments	date
102	comp1	B	1	4586		231	114	78	grey cem patches	frog: ...EY HILL PLASTIC / WINIL / ...K Co ACCRINGTON; underside shallow frog WINIL	red; large rectangular shallow frogs	L.19-20
104	comp1	B	1	4185		225	108	78		frog: ENFIELD / PLASTIC / ACCRINGTON; underside shallow frog	red with partial lighter surfaces; large rectangular shallow frogs	L.19-20
107	comp2	B	1	3702		228	110	77			cream with orange central surface, cracked; shallow frog, no mark	19-20
108	comp2	B	1	2242			110	72			cream, coarse ?slag inclusions, no frog	19-20
109	comp2	B	1	3863	+	238	111	65	grey cem 18mm thick, flecks of coal		cream	19-20
109	comp1	B	1	3343	+	229	110	80	8mm thick grey on stretchers & surfaces		red; V-section frog; white deposits poss lime mortar below grey mortar?	19-20
116	comp2	B	1	3448		229	110	70	clay-like or Fe deposits?		cream, orange surfaces	19-20
205	comp2	B	2	3751	+	230	113	75			cream with reduced horiz band/core, unwashed, 1 eroded stretcher	19-20
208	comp2	B	1	1393			108+	75			cream, unwashed, 1 eroded stretcher	19-20

Appendix 3: Context Summary List

Trench 1

Context	Type	Description	Length (m)	Width (m)	Thickness /Depth (m)	Interpretation
100	Layer	Loose, Mid Brownish-Grey Sandy Silt with Freq. Small Sub-Angular Stones, Mod Flecks of Charcoal and Small to Med Shards of Glass			0.2	Levelling deposit and ground surface
101	Layer	Firm/Compacted, Dark Grey Sandy Silt with Very Freq. Small Frags of Charcoal and Small to Med Flat, Angular Stones			0.1	Subsoil (Burnt Layer)
102	Layer	Loose, Mid to Light Brownish-Grey Sandy Silt with Freq. Broken and Complete Fired Bricks (Approx. 230mm x 110mm x 80mm), Freq. Small Sub-Angular Stones and Flecks of Charcoal			0.58	Subsoil (Rubble)
103	Layer	Firm, Mid Yellowish-Grey Concrete, with Mod Sub-Angular Stone Inclusions			0.1	Concrete
104	Layer	Firm, Dark Purplish-Grey Silt with Freq. Small Frags of Sub-Angular Stones and Mod Small Frags of Charcoal Coke			0.08	Industrial Waste
105	Layer	Loose, Dark Grey Sandy Silt with Very Freq. Flecks and Small Frags of Charcoal, Freq. Broken and Complete Fired Clay Bricks (Approx. 230mm x 110mm x 80mm) and Mod Metallic Iron and Copper Alloy Objects			0.52	Industrial Waste/ Demolition Dump
106	Layer	Firm, Light Orange-Pink Lime Mortar Dispersed with Loose, Dark Grey Sandy Silt. Freq. Flecks of Sub-Angular Stones			0.18	Mixed Mortar Layer
107	Structure	Brick (Approx 230mm x 100mm x 72mm), Irregular Finish, English Garden Wall Facing SW with Limestone Mortar	4.48	0.2		Brick Wall
108	Structure	Brick (Approx 220mm x 100mm x 70mm), Irregular Finish, Stretcher Bond of Lime Mortar, Facing SW	0.6	0.3		Wall

Context	Type	Description	Length (m)	Width (m)	Thickness /Depth (m)	Interpretation
109	Structure	Brick (Approx 230mm x 80mm x 110mm), Regular Finish with English Garden Wall Lime mortar Bond, facing SW				Wall Behind Pipes
110	Group	Circular in Section, two aligned SE-NW. West pipe (1) shows a return to NE and extends beyond limit of excavation (loe), a smaller section of a pipe (2) from the NW is joint and capped off. E pipe (3) bends up with a capped end whilst WSW-ENE pipe (4) extends beyond loe to E and W. A small section of a bent pipe (5) with an opened end is seen next to pipe (3).	1.8		0.1	A group of five Metal Pipes
111	Structure	Brick (Approx 220mm x 80mm) Irregular Finish, bond uncertain, bonded with Lime Mortar, Facing SW				Later brick segment, possibly a repair or infill between 108 and 107
112	Surface	Brick (Approx 230mm x 80mm x 100mm) Regular Finish in Stretcher bond and lime Mortar	0.07	0.3		Brick Floor
113	Surface	Brick (Approx 230mm x 80mm x 100mm) Regular Finish in Stretcher bond and Lime Mortar	0.07	0.3		Brick step
114	Surface	Brick (Approx 230mm x 80mm x 100mm) Regular Finish in Stretcher bond and Lime Mortar	0.07	0.3		Brick step, associated with floor 116 and 113 and 112
115	Structure	Brick (Approx 110mm x 80mm) regular Finish with Lime Mortar	0.2	0.3		Modern Brick Wall
116	Surface	Brick (Approx 230mm x 80mm x 100mm) Regular Finish in Stretcher bond with Lime Mortar	0.07	0.3		Brick Floor, associated with floor 114
117	Structure	Red Brick (Approx 220mm x 100mm x 70mm), Irregular Finish, bonded , Facing SW	=>0.32	0.32		Small segment of wall seen in section, possible repair work

Trench 2

Context	Type	Description	Length	Width	Thickness /Depth	Interpretation
200	Layer	Loose, Mid Brownish-Grey Sandy Silt with freq. Small Sub-Angular Stones with Mod Flecks of Charcoal				Levelling deposit and ground surface
201	Layer	Firm/Compact, Dark grey Sandy Silt with Freq. Small Frags of Charcoal			0.1	Modern Dump
202	Layer	Loose, Mid to Light Brownish Grey Sandy Silt with Freq. Rubble Brick - Same as 102				Made Ground
203	Layer	Loose, Dark greyish-Blue Slate, with Very Freq. Broken Slate Pieces				Modern Dump
204	Structure	Brick (Approx 240mm x 120mm x 80mm) Regular Finish with English Garden Wall Lime Mortar Bonding, facing NE-SW				Brick Wall
205	Surface	Brick (Approx 230mm x 110mm x 70mm) Regular Finish, Stretcher Lime Mortar Bonding, facing NE-SW				Top of possible plinth
206	Structure	Brick (Approx 230mm x 110mm x 70mm) Regular Finish with English Garden Wall Lime Mortar Bonding, Facing NE-SE				Brick Wall
207	Surface	Brick (Approx 160mm x 70mm) Regular Finish with English garden Wall Lime mortar Finish, facing NE-SW				Brick Floor
208	Structure	Sandstone (Approx 320mm x 300mm) Regular Finish with Limestone Mortar				Upper Course of [209]
209	Structure	Sandstone (Approx 100mm x 90mm) Regular Finish, Header Lime mortar Bonding, facing NW-SE				Lower Course of [208]

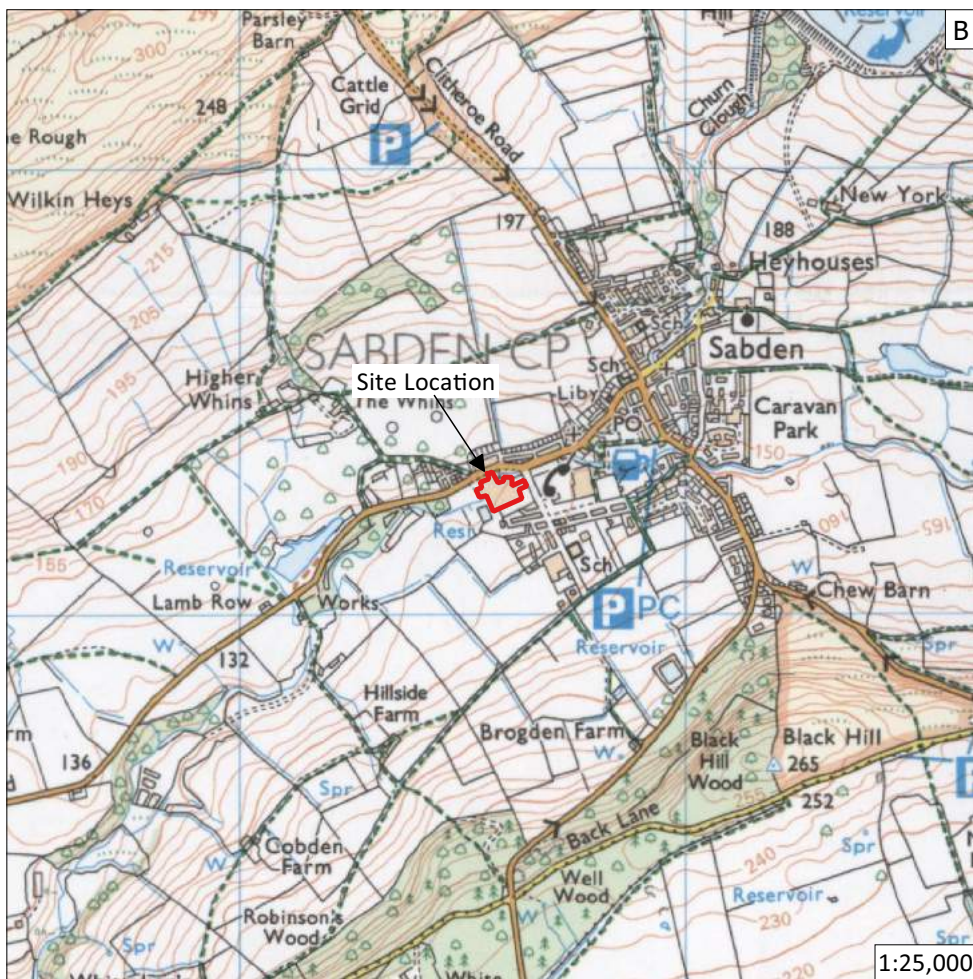
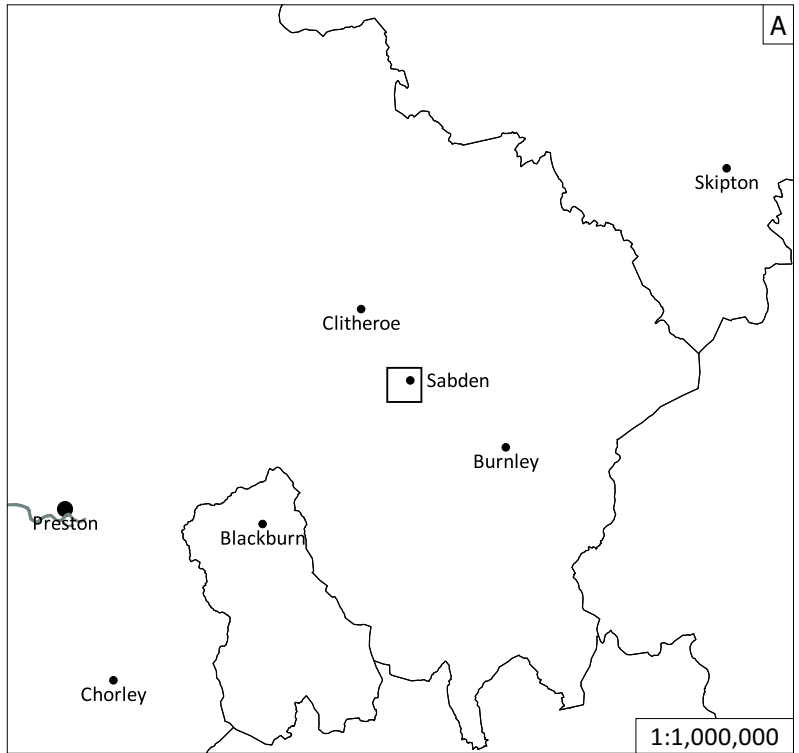


Figure 1: Site location outlined in red

© Crown copyright 2000. All rights reserved. Licence Number 100047330

Site Code	SAWS18
Scale	1:10,000,000 1:1,000,000 1:25,000 @ A4
Drawn by	M. Johnson
Date	06/07/2018



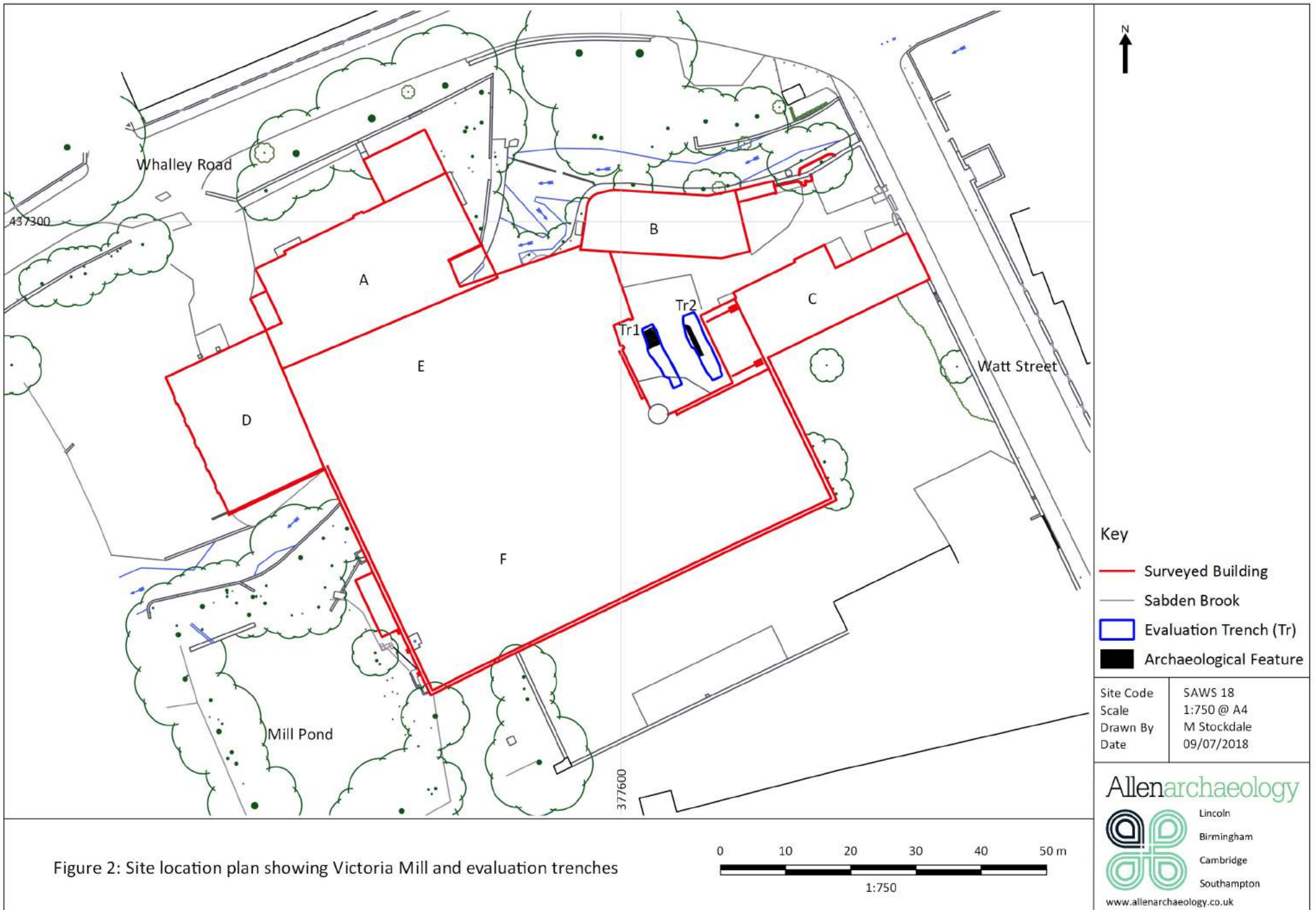


Figure 2: Site location plan showing Victoria Mill and evaluation trenches

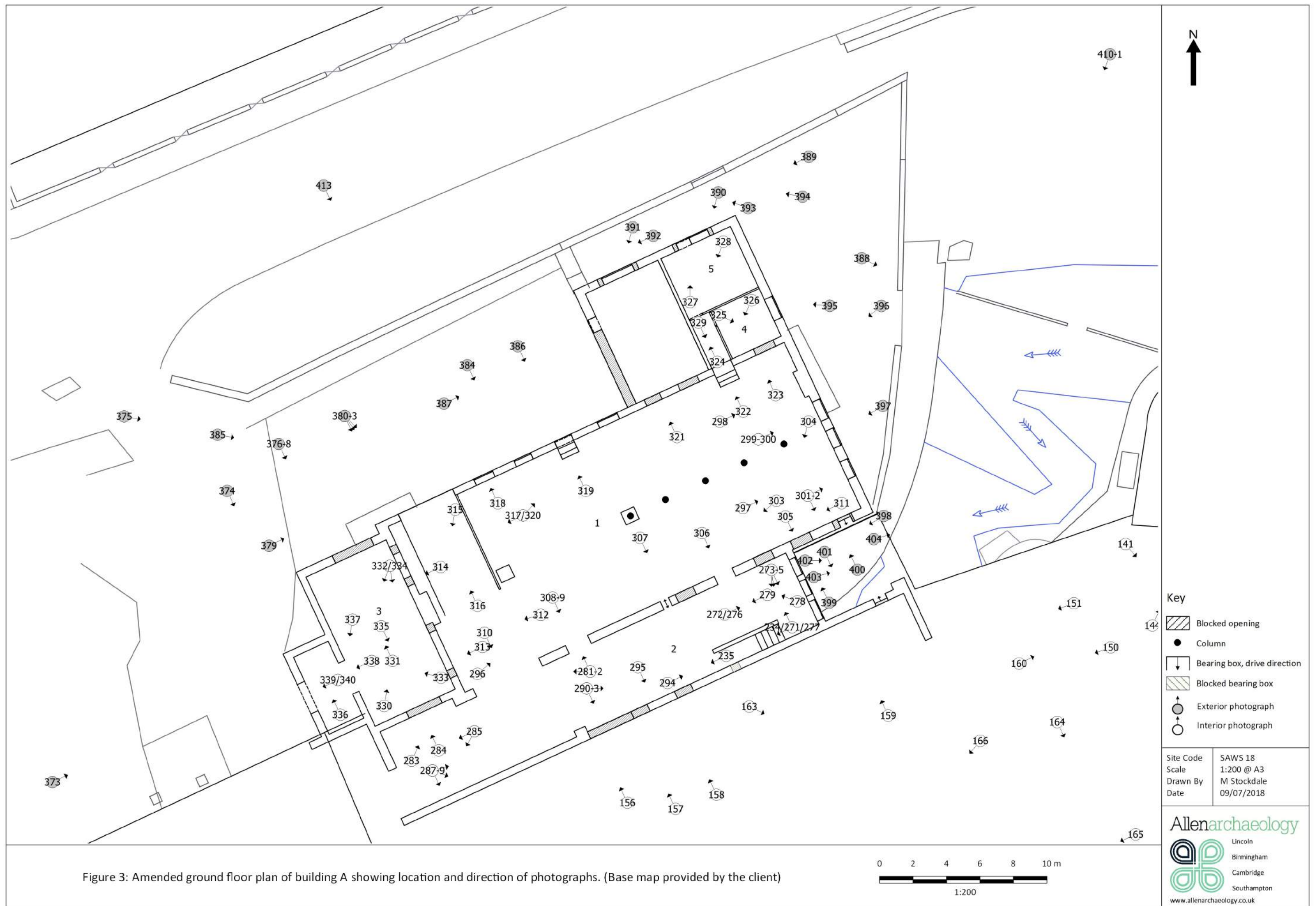
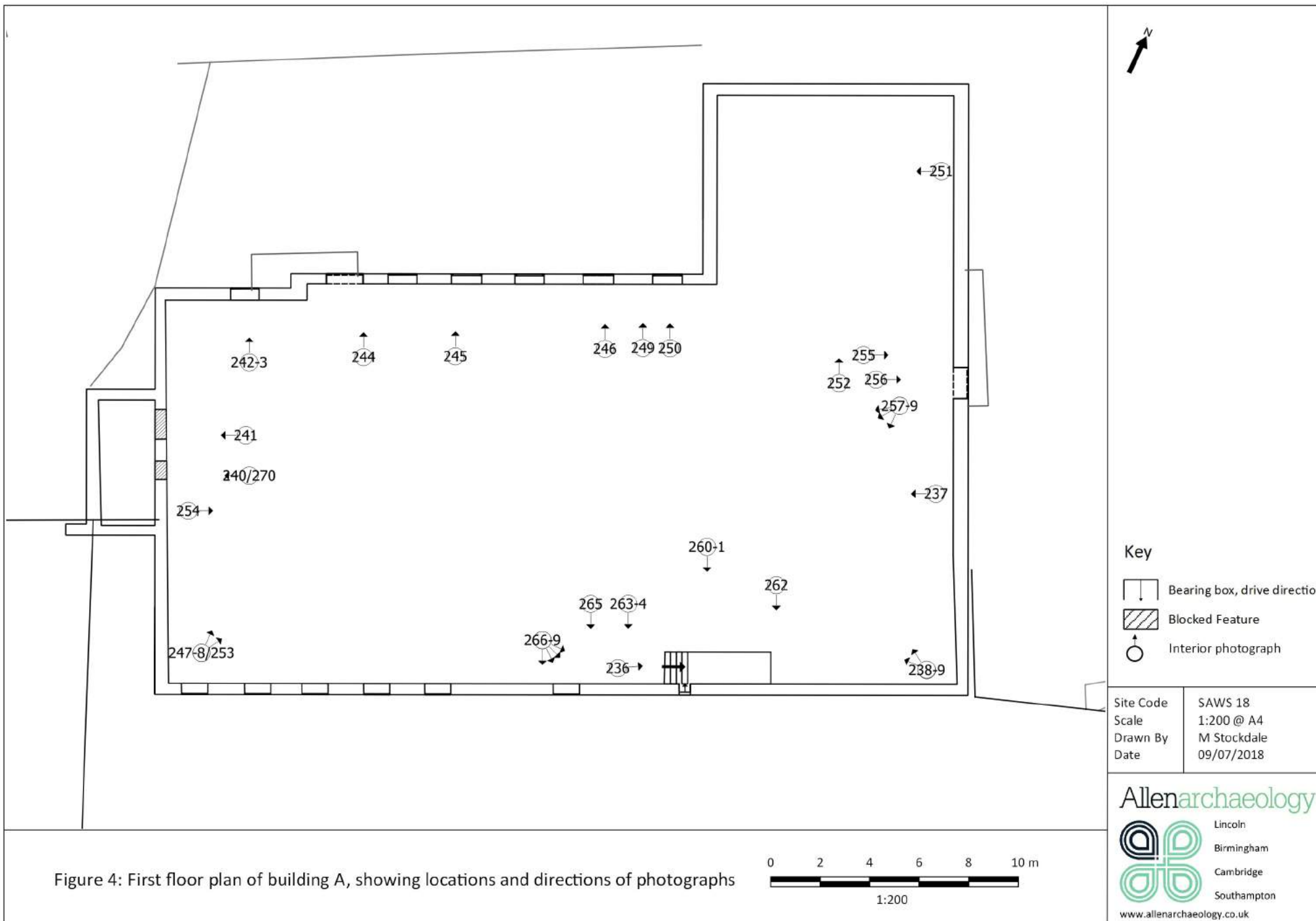


Figure 3: Amended ground floor plan of building A showing location and direction of photographs. (Base map provided by the client)



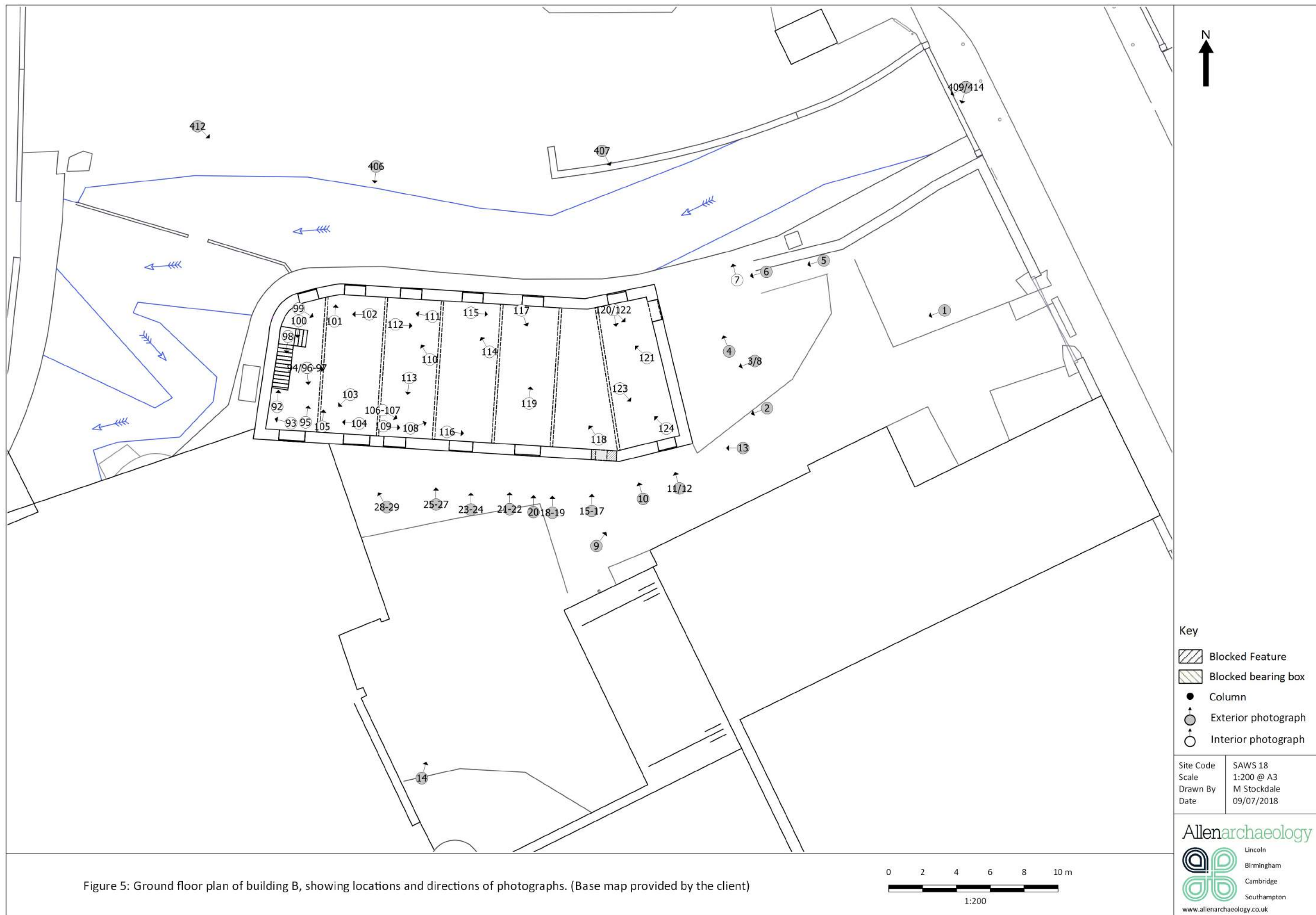


Figure 5: Ground floor plan of building B, showing locations and directions of photographs. (Base map provided by the client)

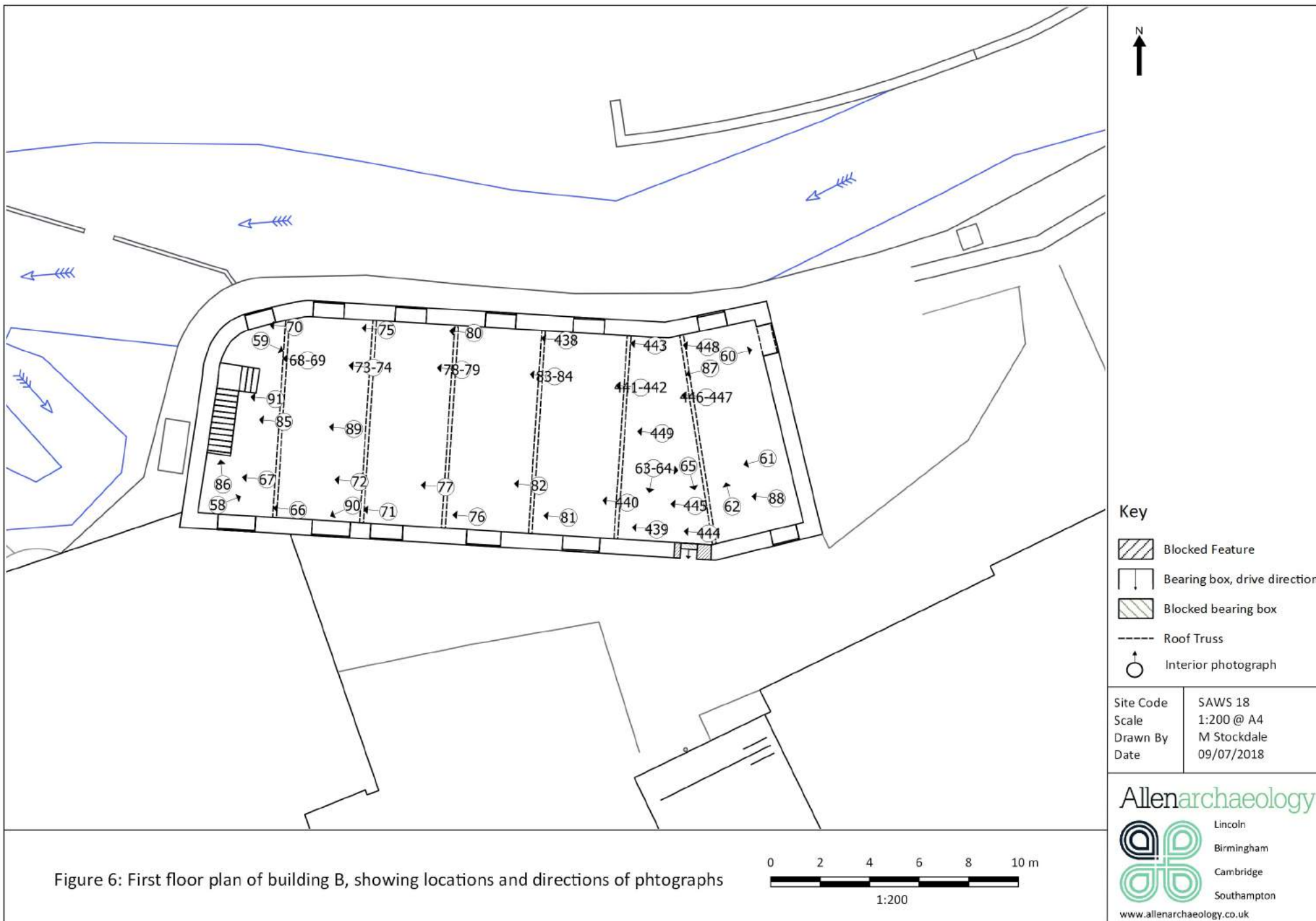
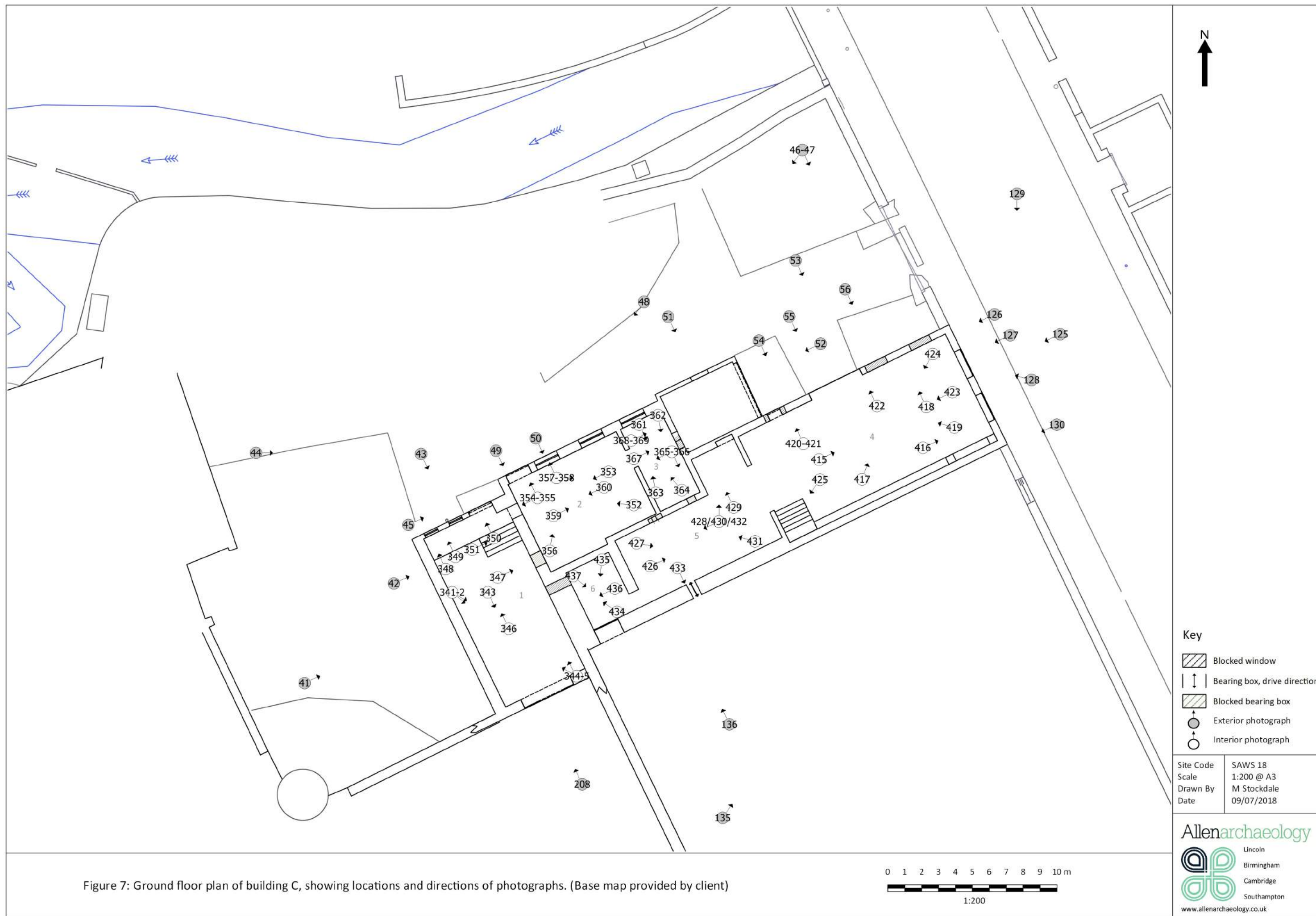


Figure 6: First floor plan of building B, showing locations and directions of phtographs



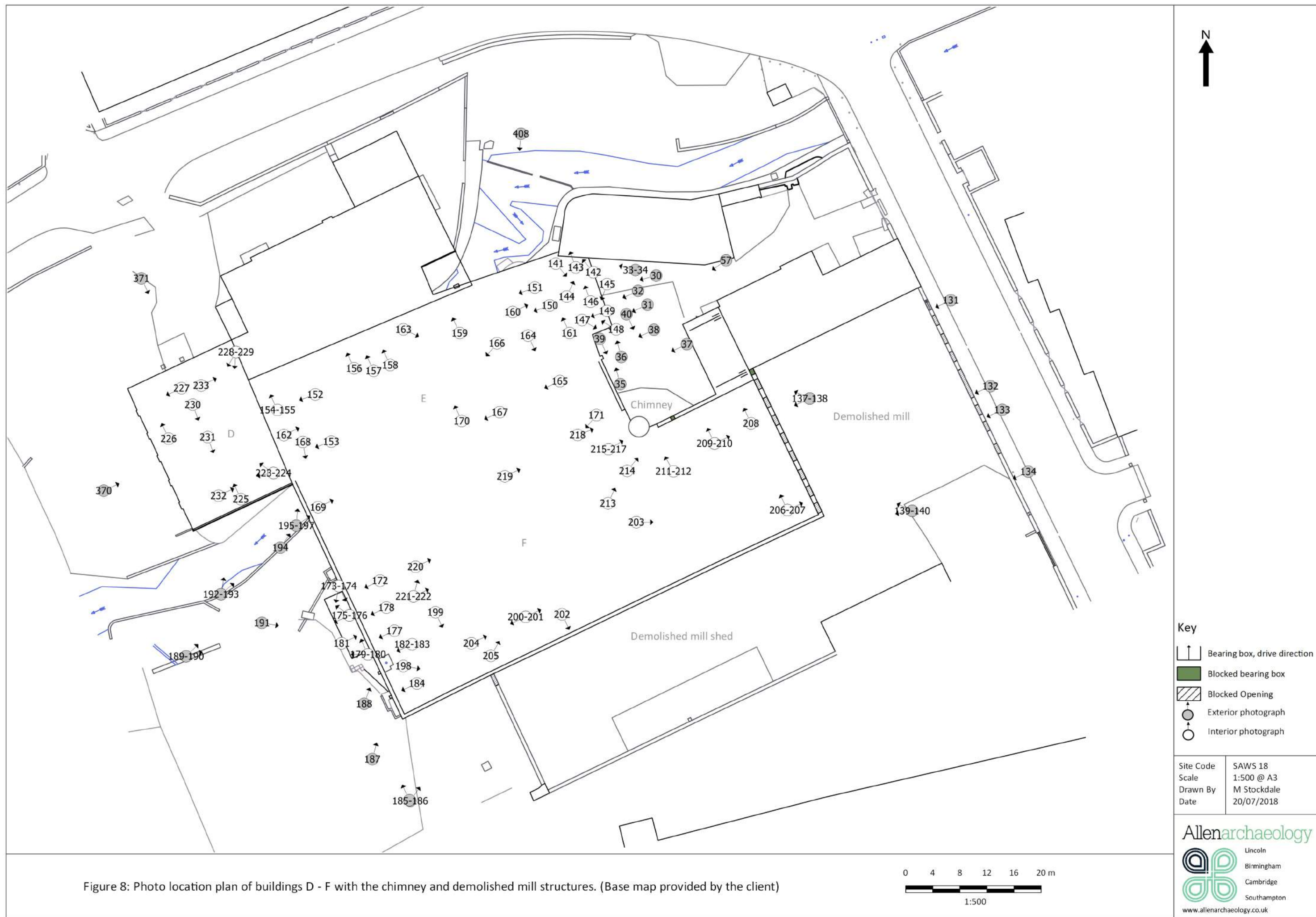
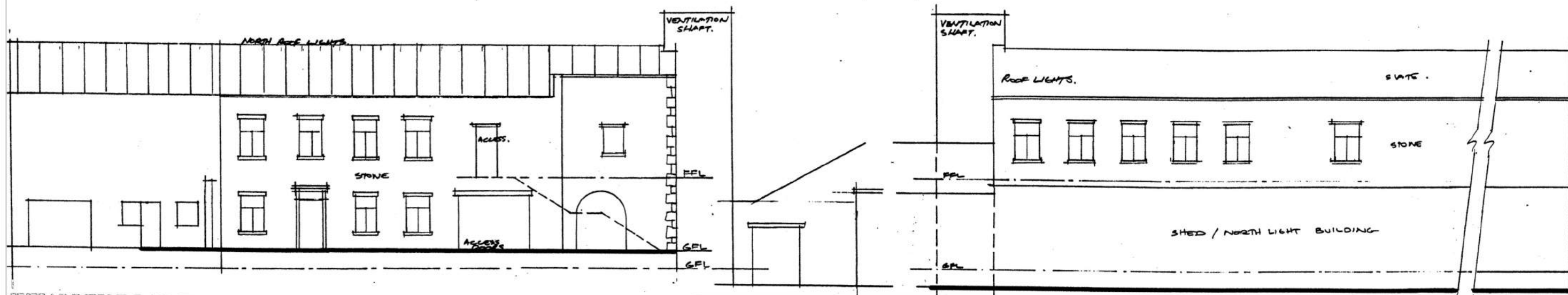
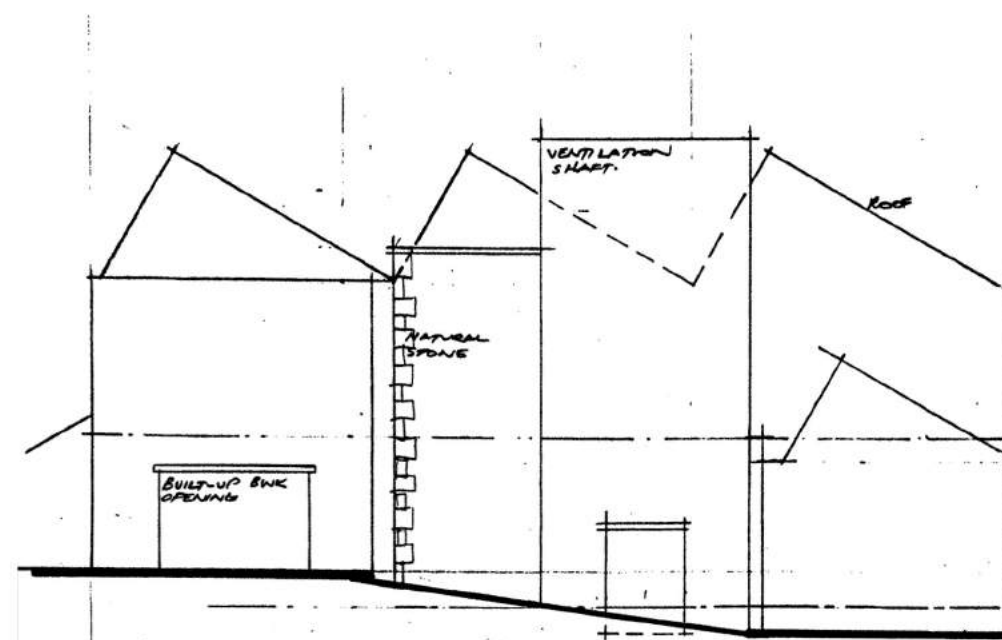


Figure 8: Photo location plan of buildings D - F with the chimney and demolished mill structures. (Base map provided by the client)



North Elevation

South Elevation



West Elevation

Site Code	SAWS 18
Scale	1:200 @ A3
Drawn by	M Stockdale
Date	09/07/2018

Allenarchaeology
 Lincoln
 Birmingham
 Cambridge
 Southampton
www.allenarchaeology.co.uk

Figure 9: Existing elevations of building A. (Drawings provided by the client)





Figure 10: Ordnance Survey map of 1844-46 (Lancashire Archive) showing location of building A.



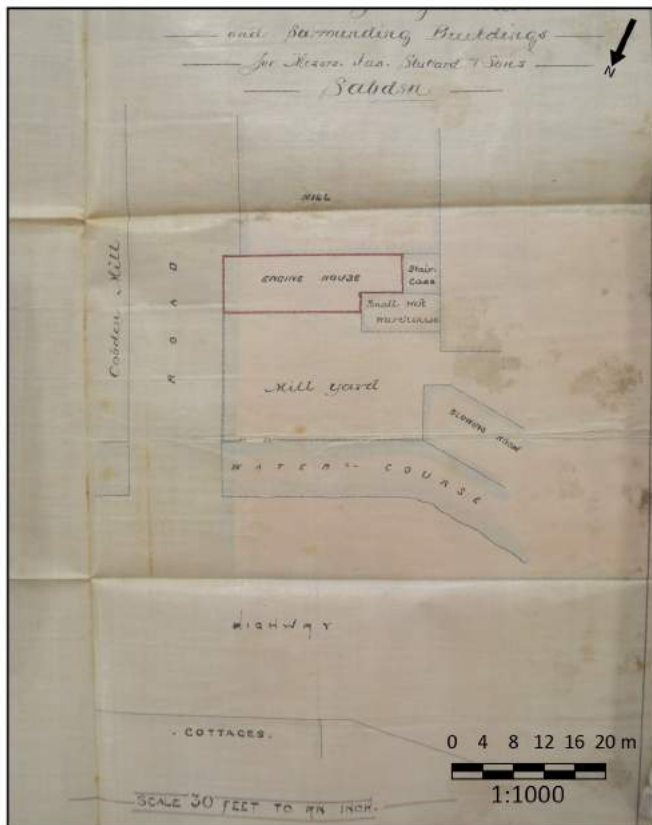
Site Code	SAWS 18
Scale	1:1250 @ A4
Drawn By	M Stockdale
Date	06/07/2018

Allenarchaeology

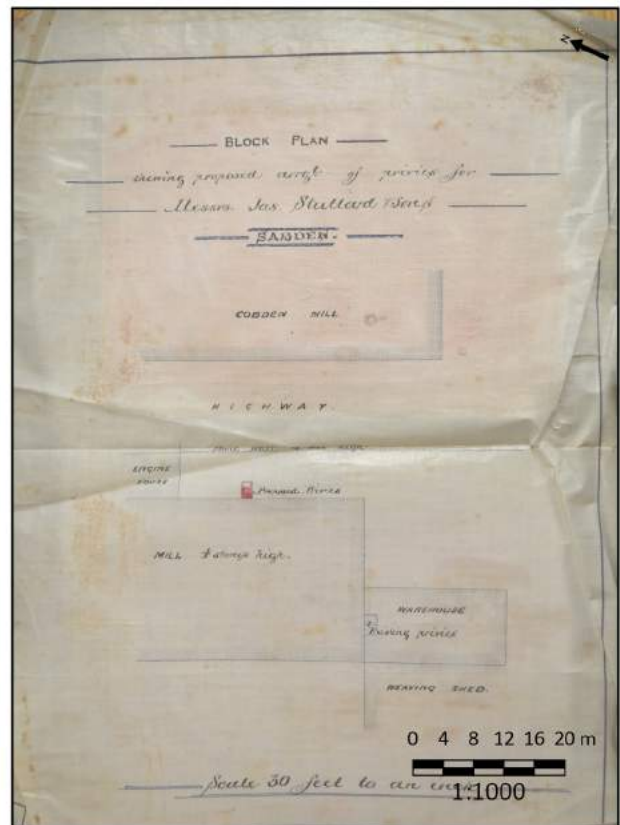


Lincoln
Birmingham
Cambridge
Southampton

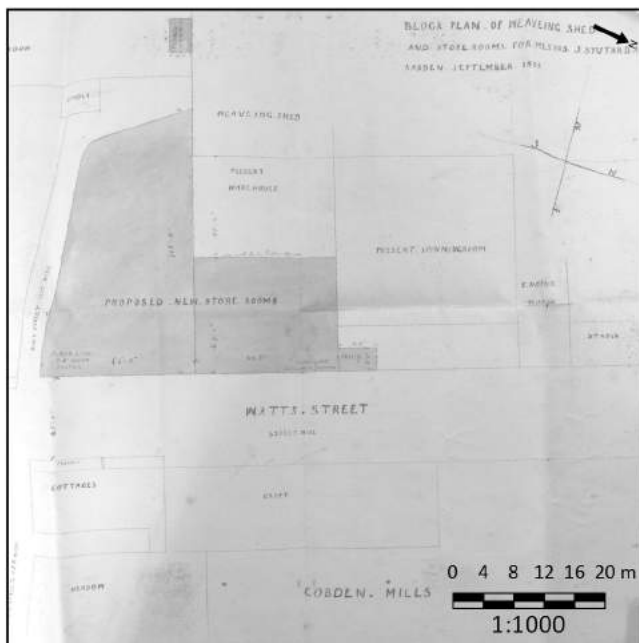
www.allenarchaeology.co.uk



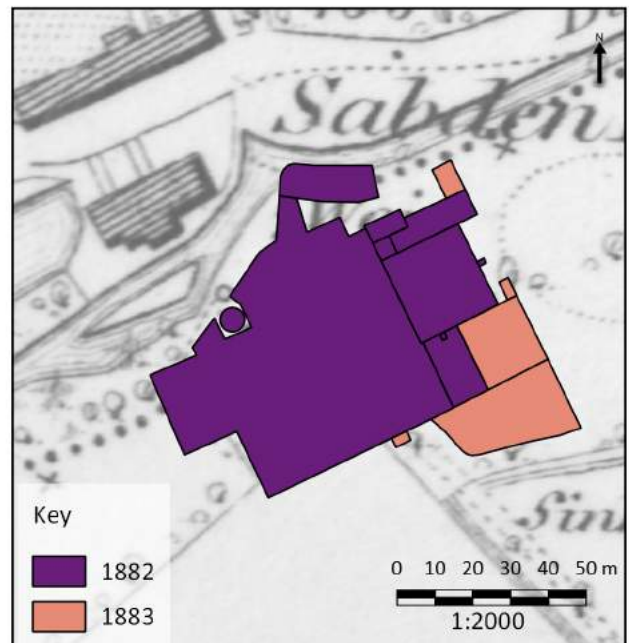
1882 Proposed engine shed (Lancashire Archives: RDBU 7/2/208/1)



1882 Alterations to privies (Lancashire Archives: RDBU/7/2/208/2)

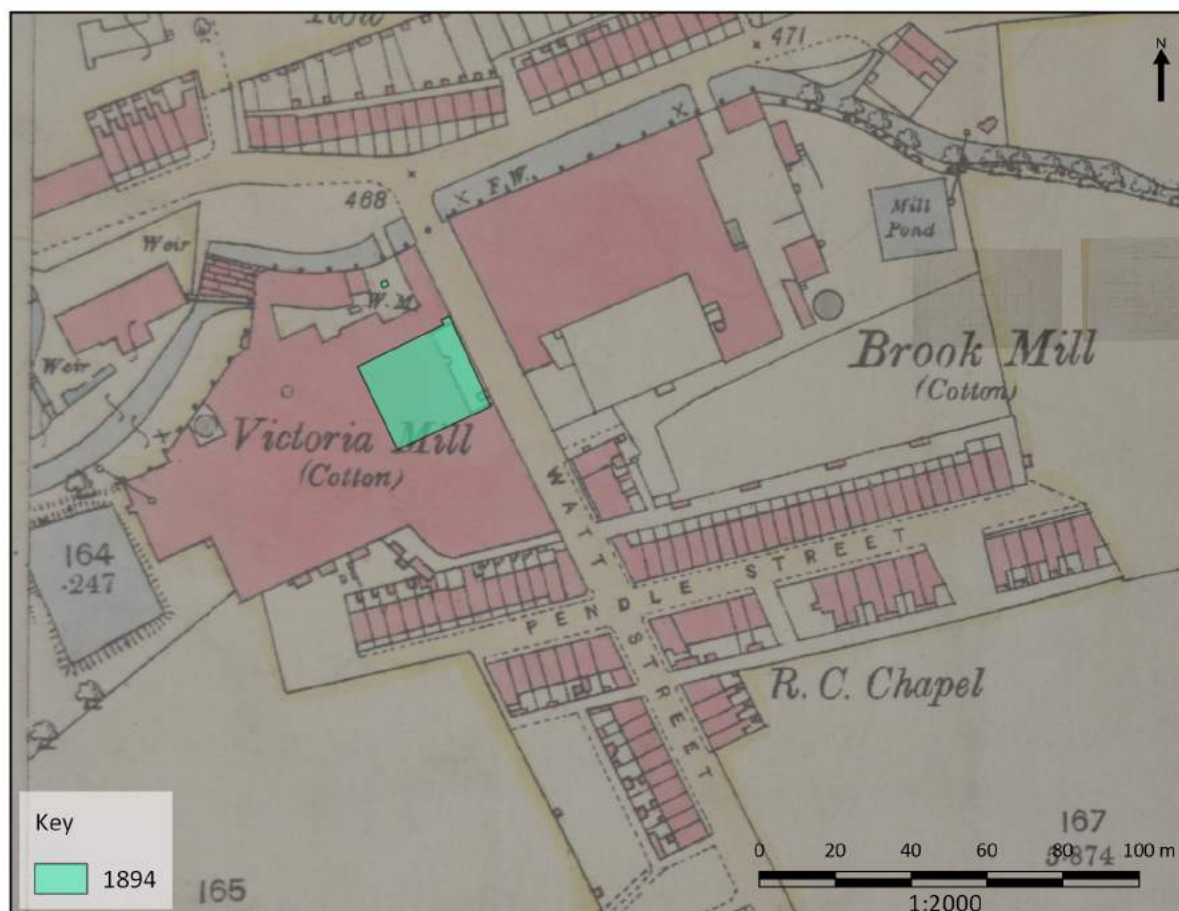


1883 Weaving shed and Storeroom extension (Lancashire Archives: RDBU/7/2/1)

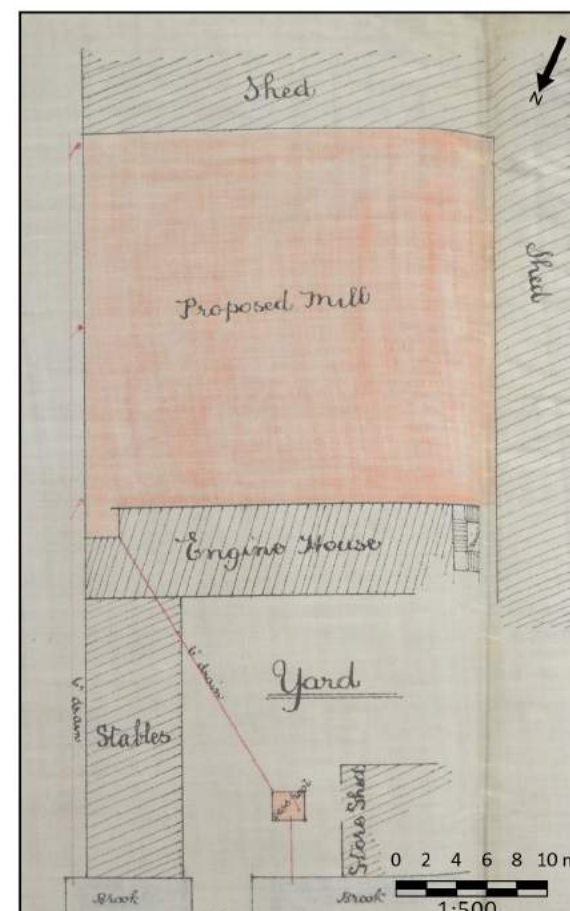


Existing mill with extensions

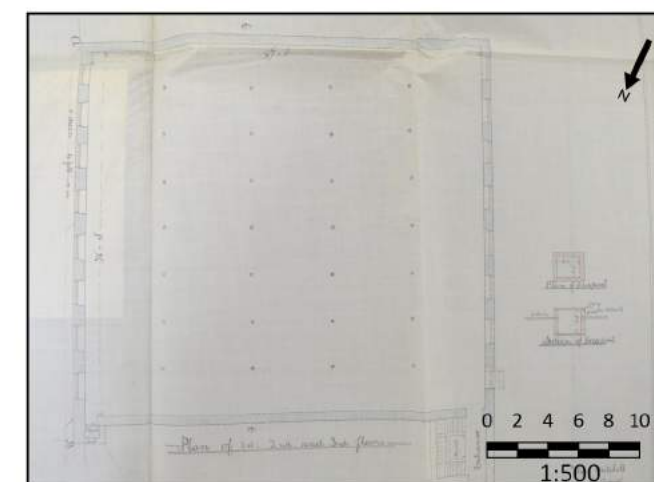
Site Code	SAWS 18
Scale	1:1000, 1:2000 @ A3
Drawn By	M Stockdale
Date	26/06/2018



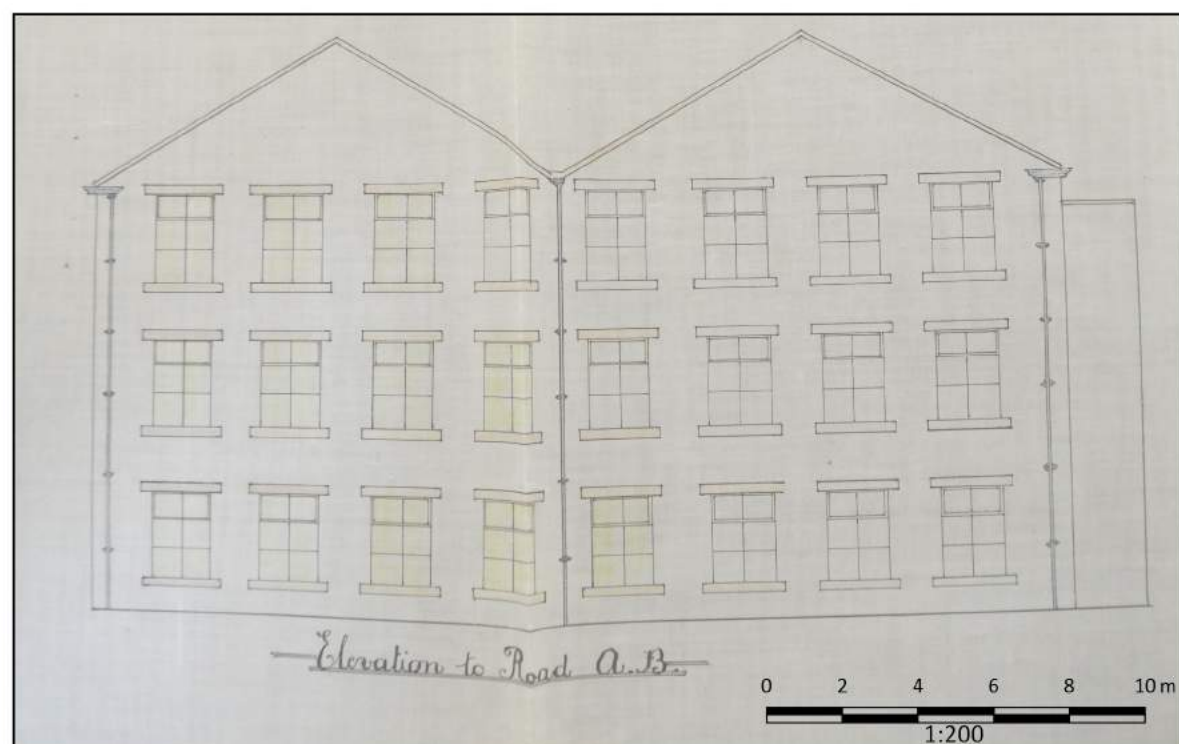
Ordnance Survey map 1892 with 1894 extension (Lancashire Archive)



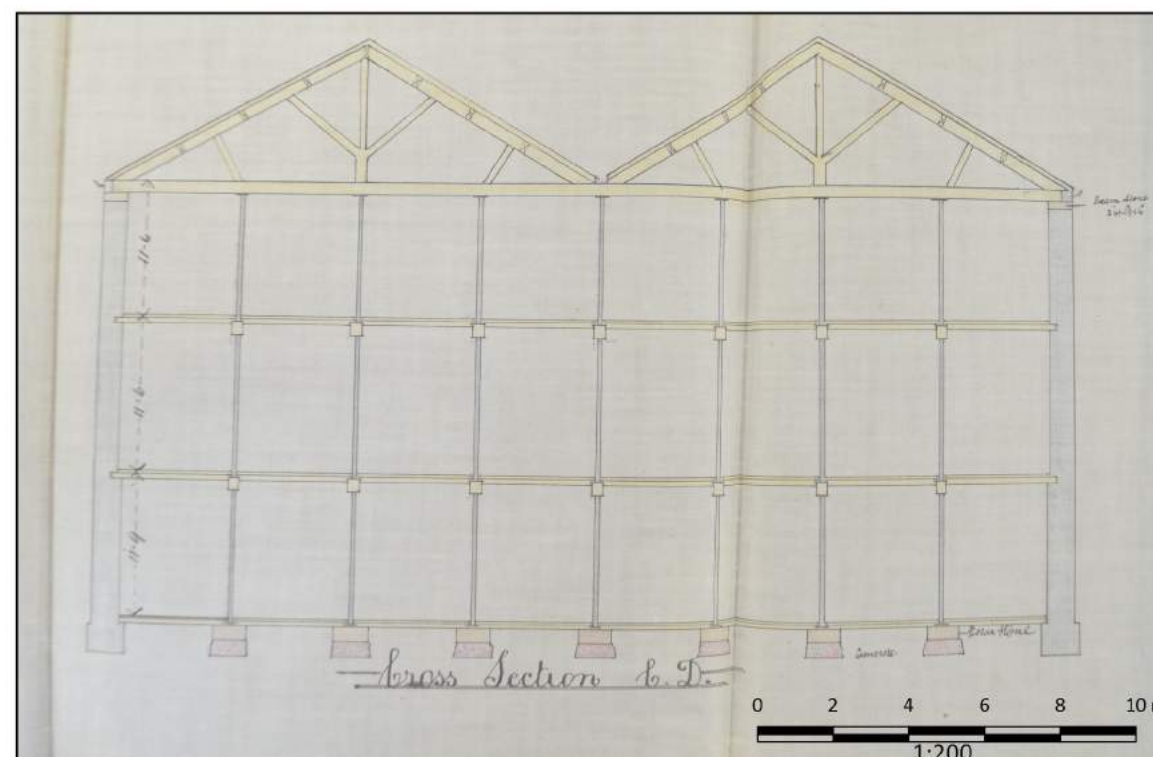
Proposed Mill 1894 (Lancashire Archive, RDBU/7/2/43)



Proposed Mill plan 1894 of second and third floor (Lancashire Archive, RDBU/7/2/43)



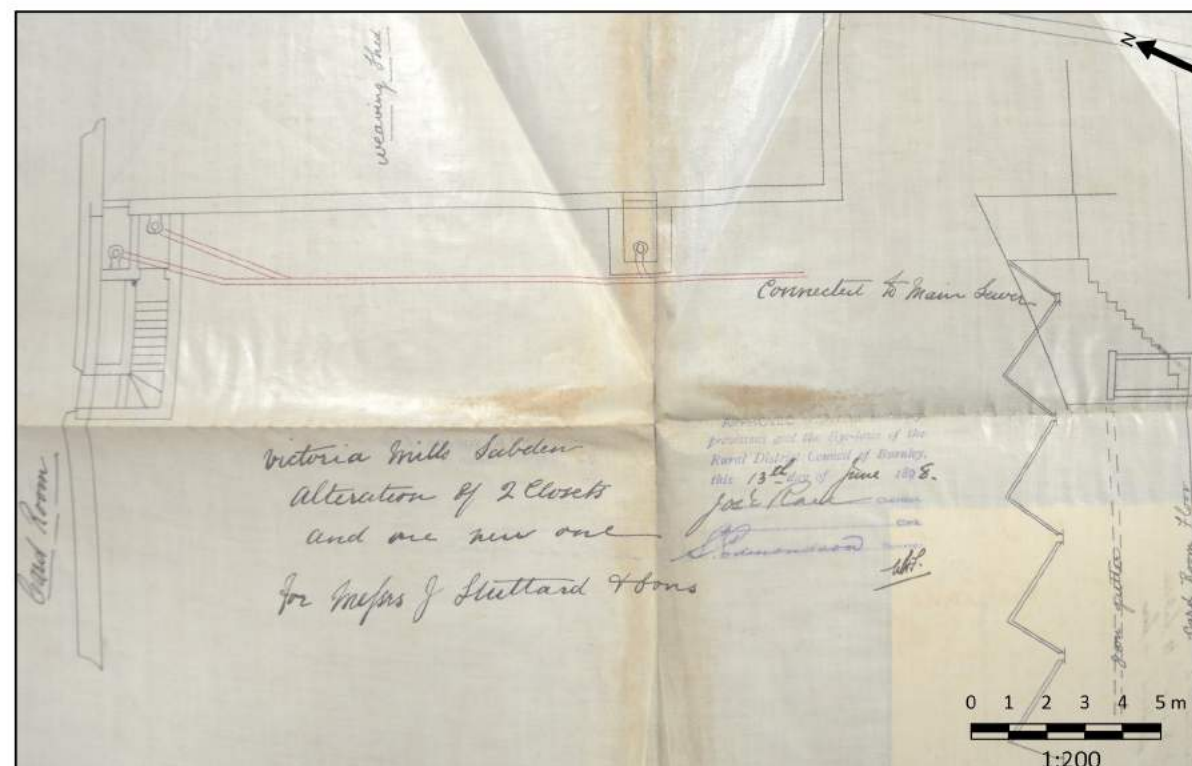
East elevation of proposed mill 1894 (Lancashire Archive, RDBU/7/2/43)



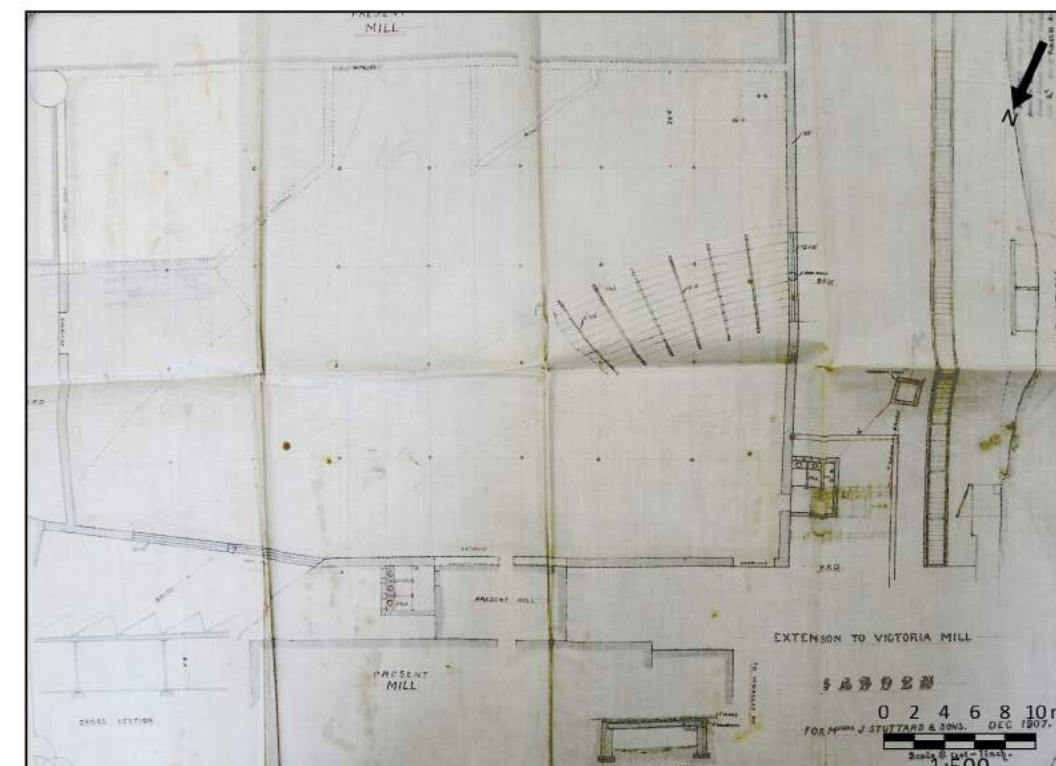
Section of proposed mill 1894 (Lancashire Archive, RDBU/7/2/43)

Figure 12: Maps, plans and section from 1892 - 1894. (Scales are approximate)

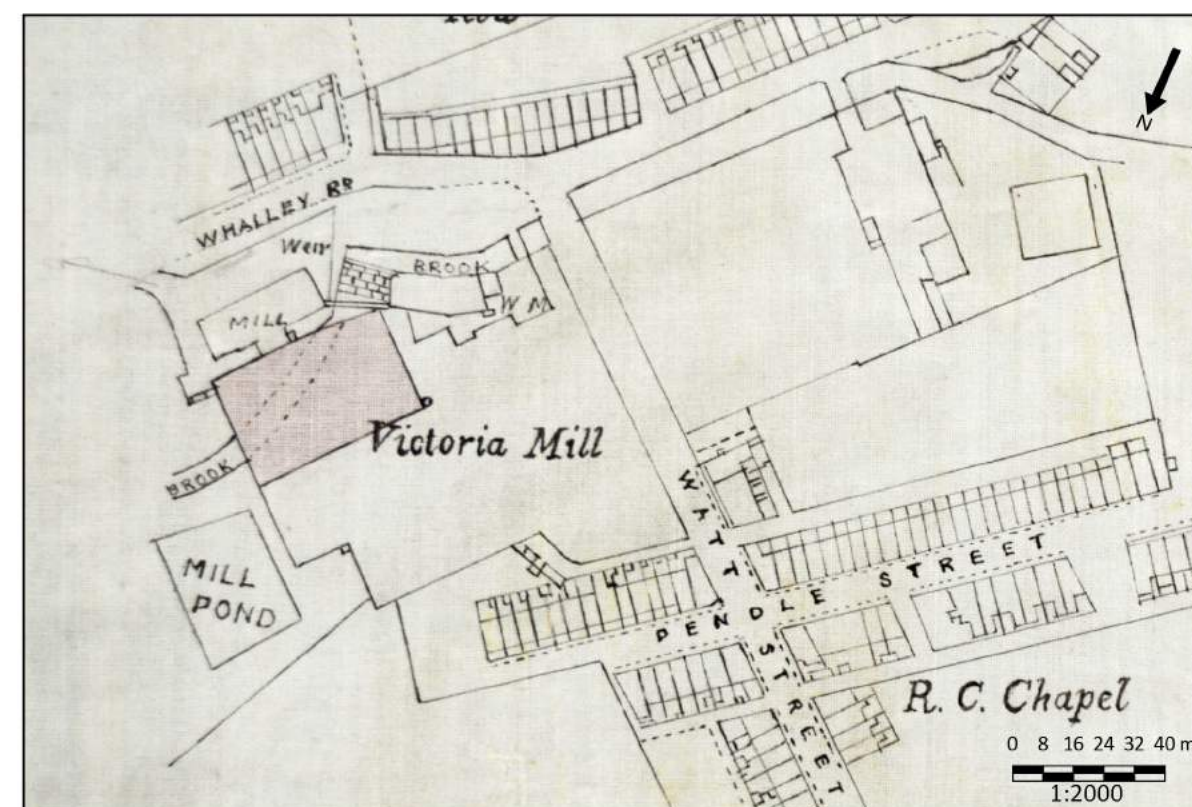
Site Code	SAWS 18
Scale	1:2000, 1:500 and 1:200 @ A3
Drawn by	M Stockdale
Date	09/07/2018



Alteration to existing WCs and proposed new WC, 1898. (Lancashire Archive, RDBU/7/2/68)



New extension 1908, detailed plan (Lancashire Archive, RDBU/7/2/129)



New extension 1908 block plan (Lancashire Archive, RDBU/7/2/129)



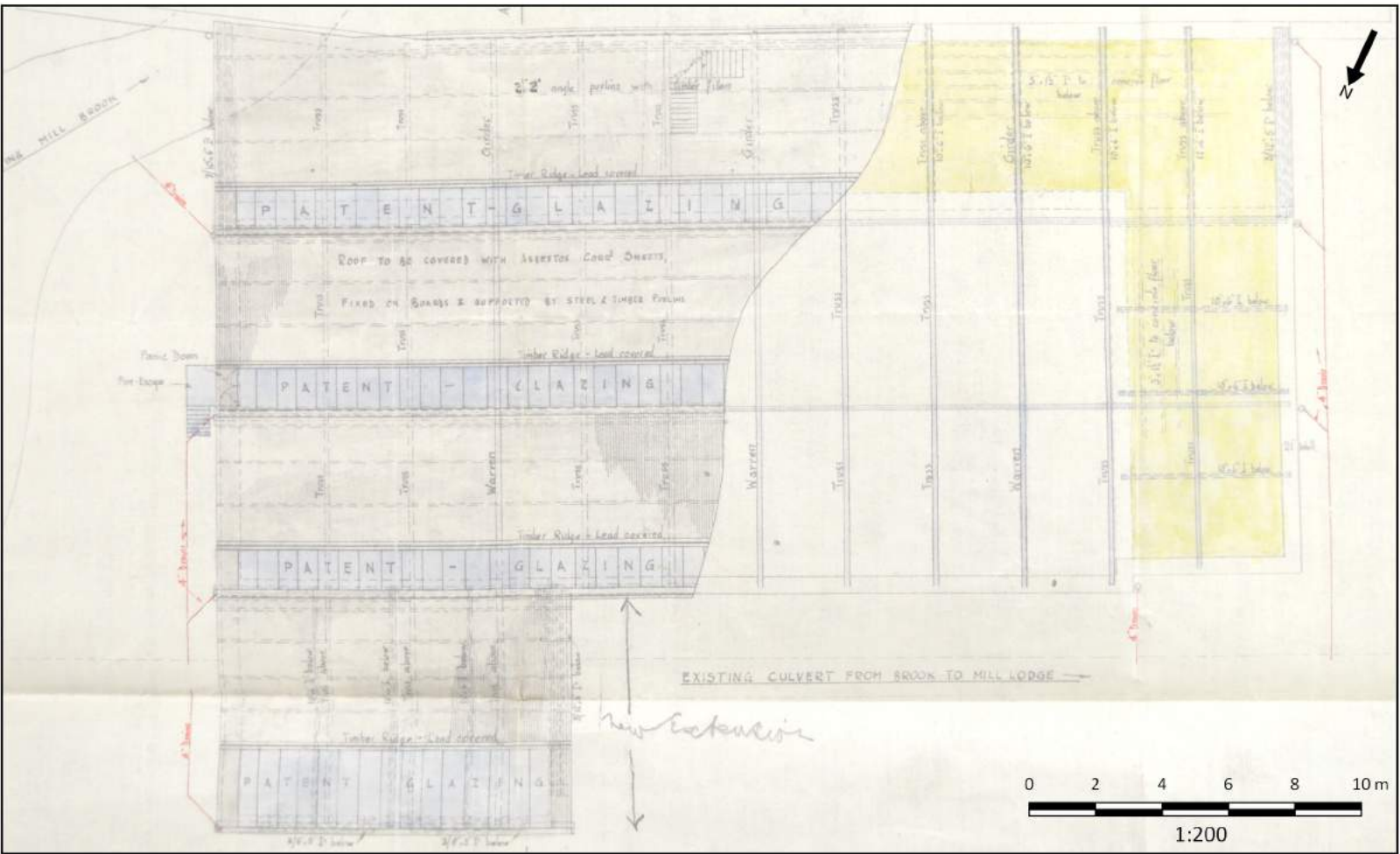
Existing mill with extensions 1898 - 1908 superimposed on Ordnance Survey map from 1892

Site Code	SAWS 18
Scale	1:200, 1:500 @ A3
Drawn by	M Stockdale
Date	26/06/2018

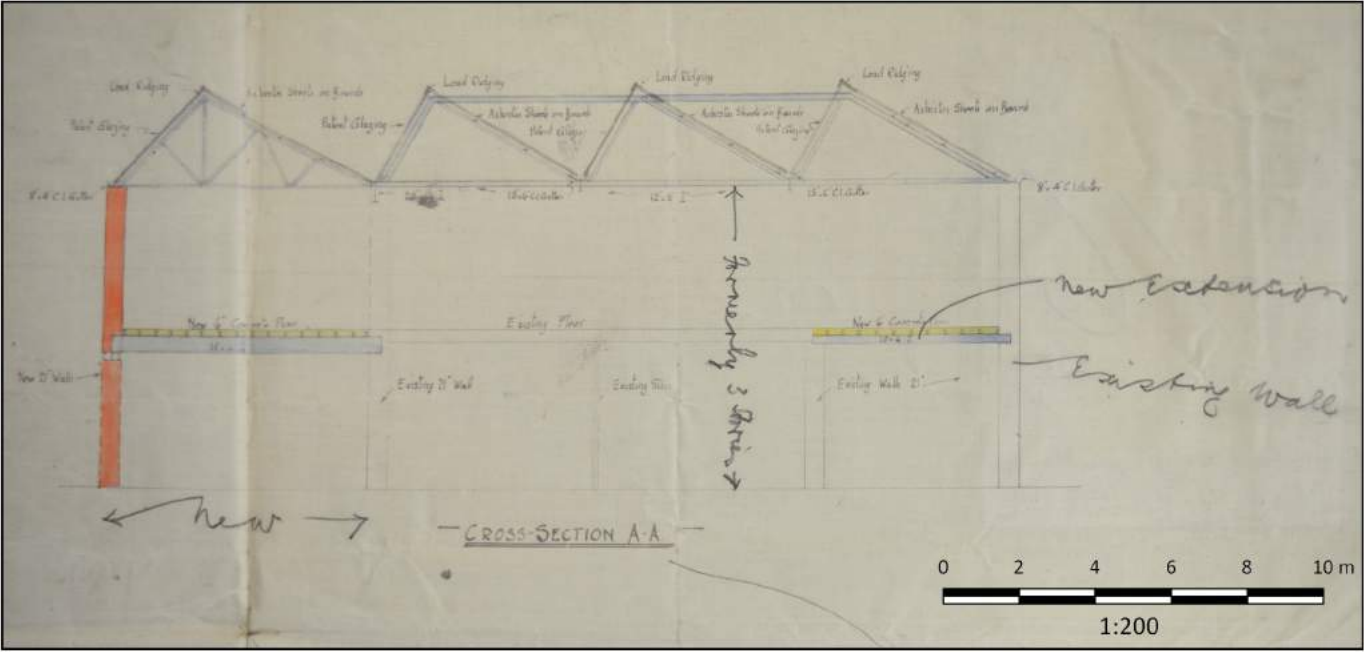
Figure 13: Plans and maps of the mill from 1898 - 1908, scales are approximate



Extensions added in 1912 and 1933 superimposed on Ordnance Survey map from 1910 (National Library of Scotland)



Proposed extension of spinning department, 1933 (Lancashire Archives, RDBU/7/2/208/3)



Section of proposed extension of spinning department, 1933 (Lancashire Archives, RDBU/7/2/208/3)

Figure 14: Maps and plans of the mill 1910 - 1933, scales are approximate

Site Code	SAWS 18
Scale	1:2000, 1:200 @ A3
Drawn By	M Stockdale
Date	26/06/2018

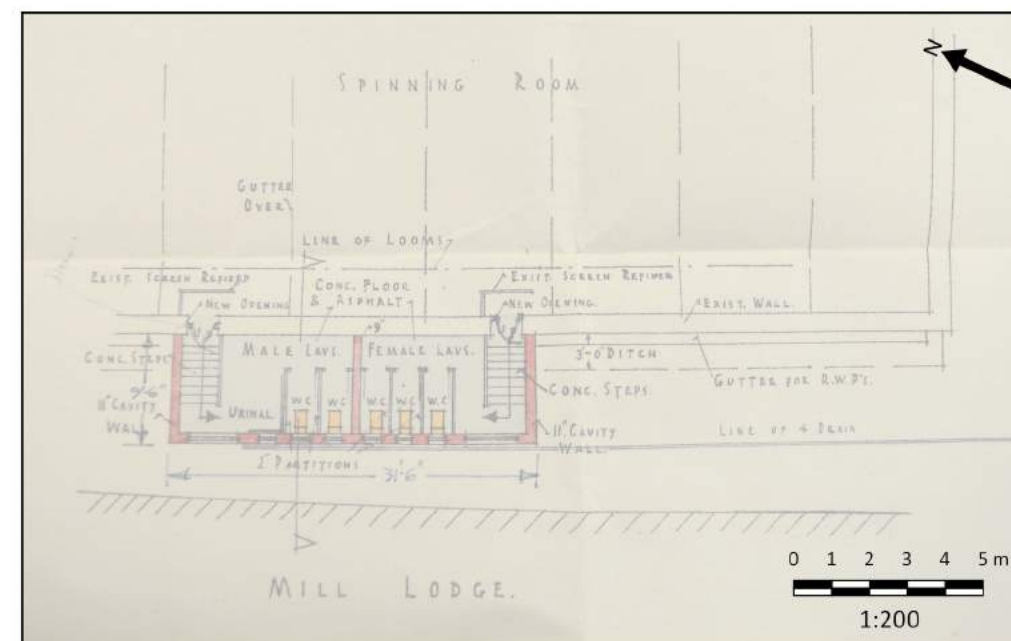
Allenarchaeology

Lincoln
Birmingham
Cambridge
Southampton

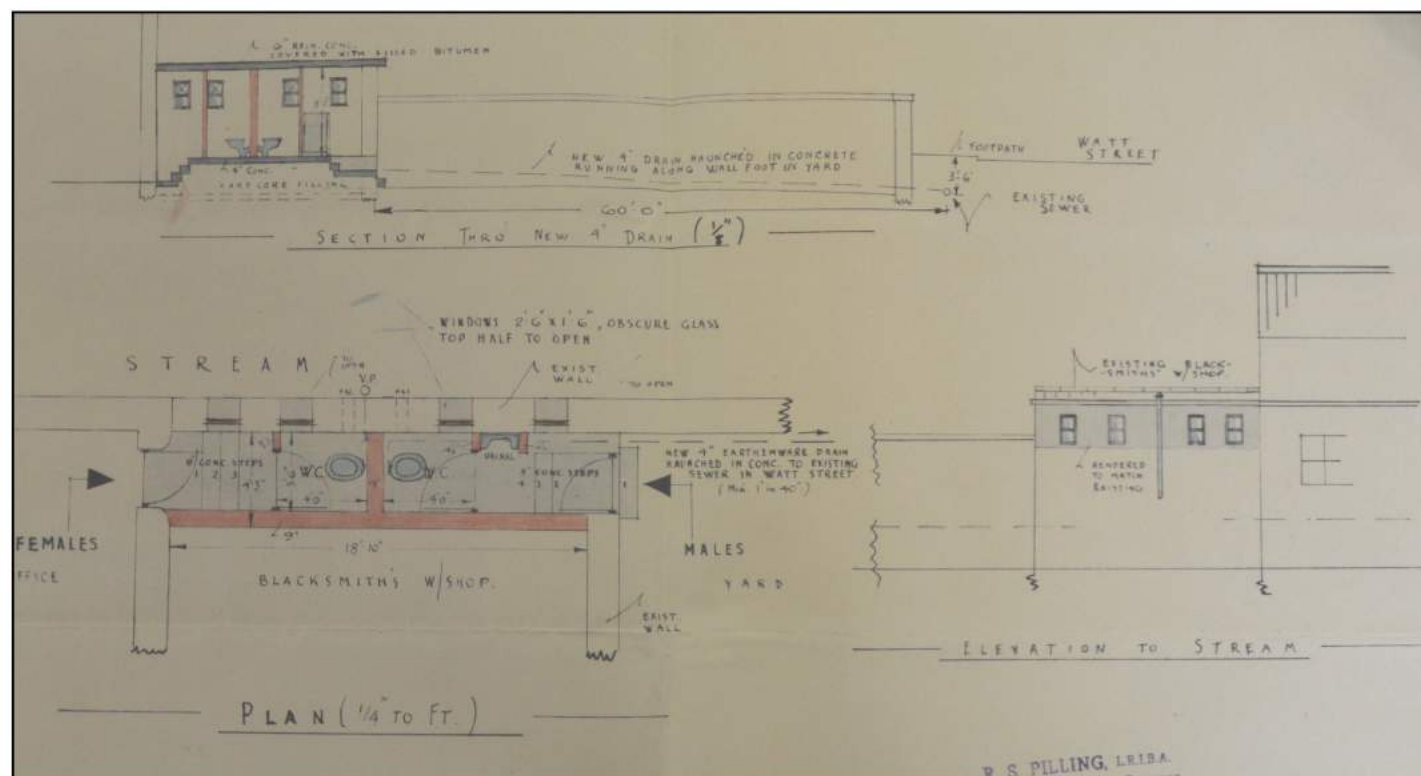
www.allenarchaeology.co.uk



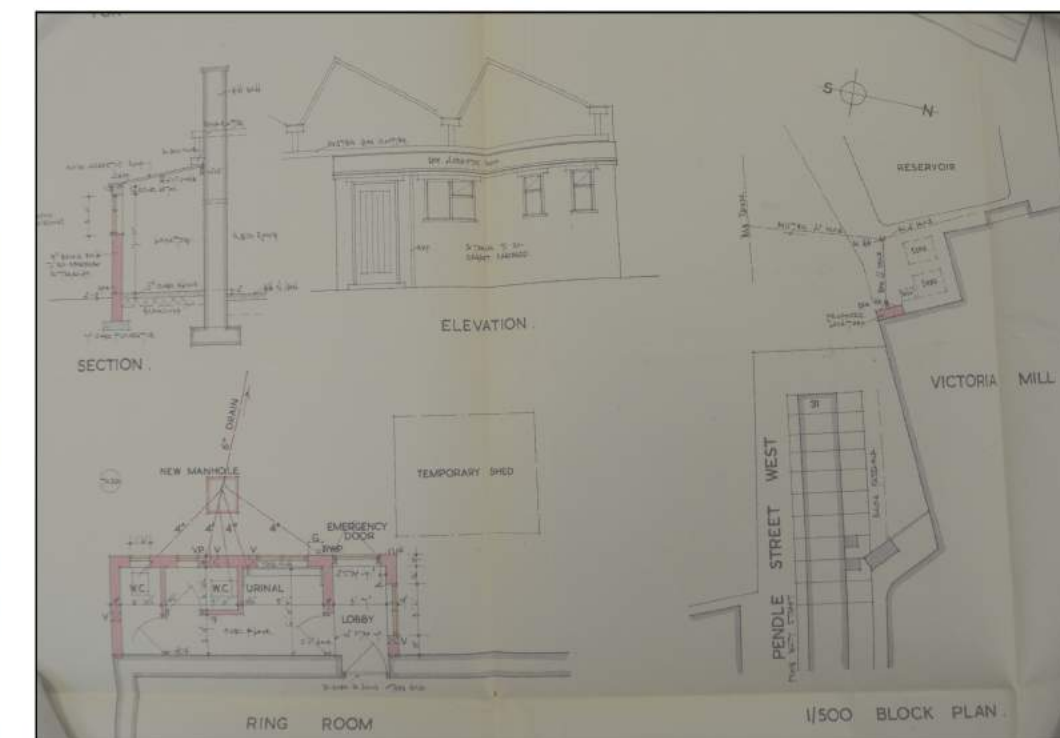
Extensions added between 1947-1970, superimposed on Ordnance Survey map from 1970



New WCs to spinning room, 1947 (Lancashire Archive RDBU/7/2/208/4)



New WC added at the rear of the blacksmith's shop in 1950, not to scale (Lancashire Archive, RDBU/7/2/208/5)



New WC added to the rear of the ring room in 1953, not to scale (Lancashire Archive RDBU/7/2/208/6)

Figure 15: Maps and plans from 1947 - 1970

Site Code	SAWS 18
Scale	1:2000, 1:200 @ A3
Drawn by	M Stockdale
Date	09/07/2018



Figure 16: Phased block plan of Victoria Mill

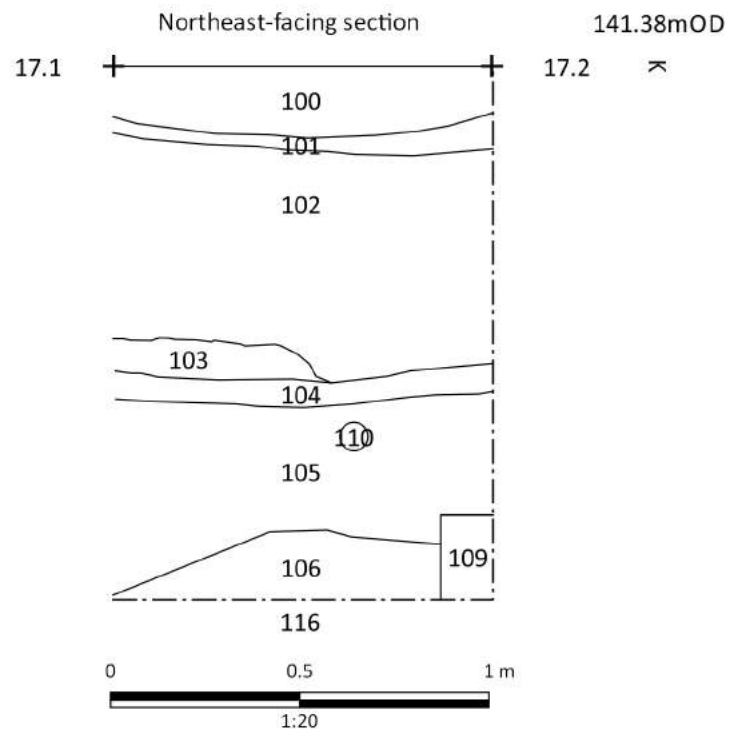
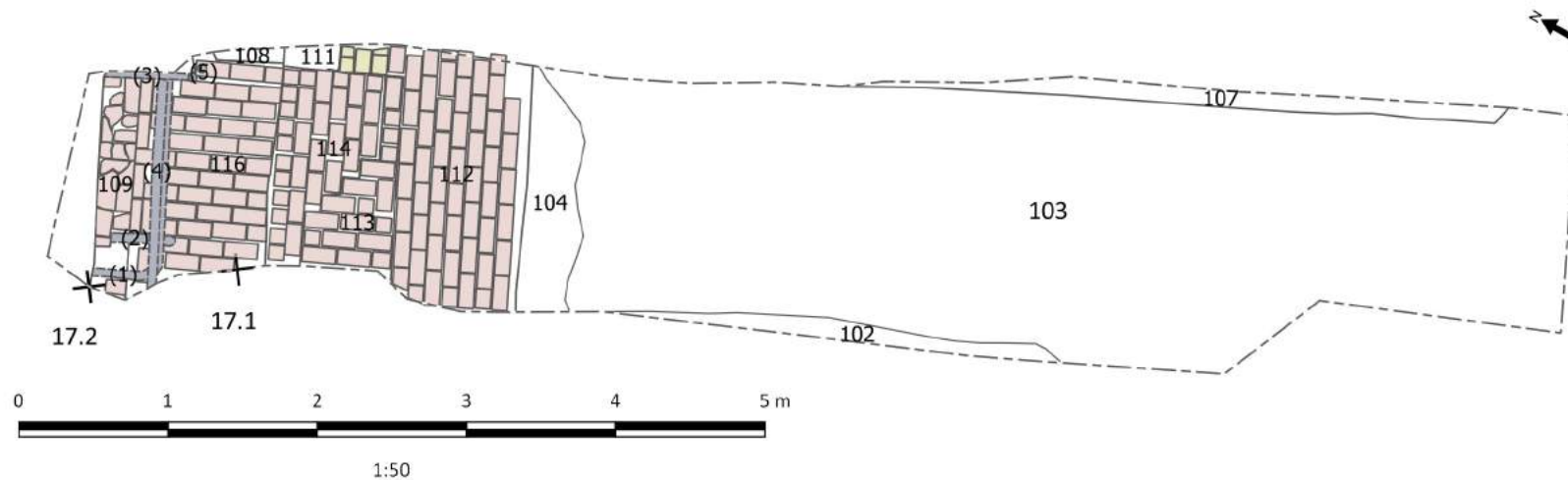
Key

- pre 1846
- pre 1882
- 1883
- 1894
- 1898
- 1908
- 1912
- 1933
- 1947
- 1950
- 1953
- post 1964

Site Code	SAWS 18
Scale	1:1000@ A4
Drawn By	M Stockdale
Date	09/07/2018

Allenarchaeology

Lincoln
Birmingham
Cambridge
Southampton
www.allenarchaeology.co.uk



- Key
- Archaeological feature
 - Limit of excavation
 - Metal pipe
 - Red brick
 - Yellow brick

Site Code	SAWS18
Scale	1:50, 1:20 @ A4
Drawn By	Madeline Johnson
Date	09/07/2018

Figure 17: Plan and section of Trench 1

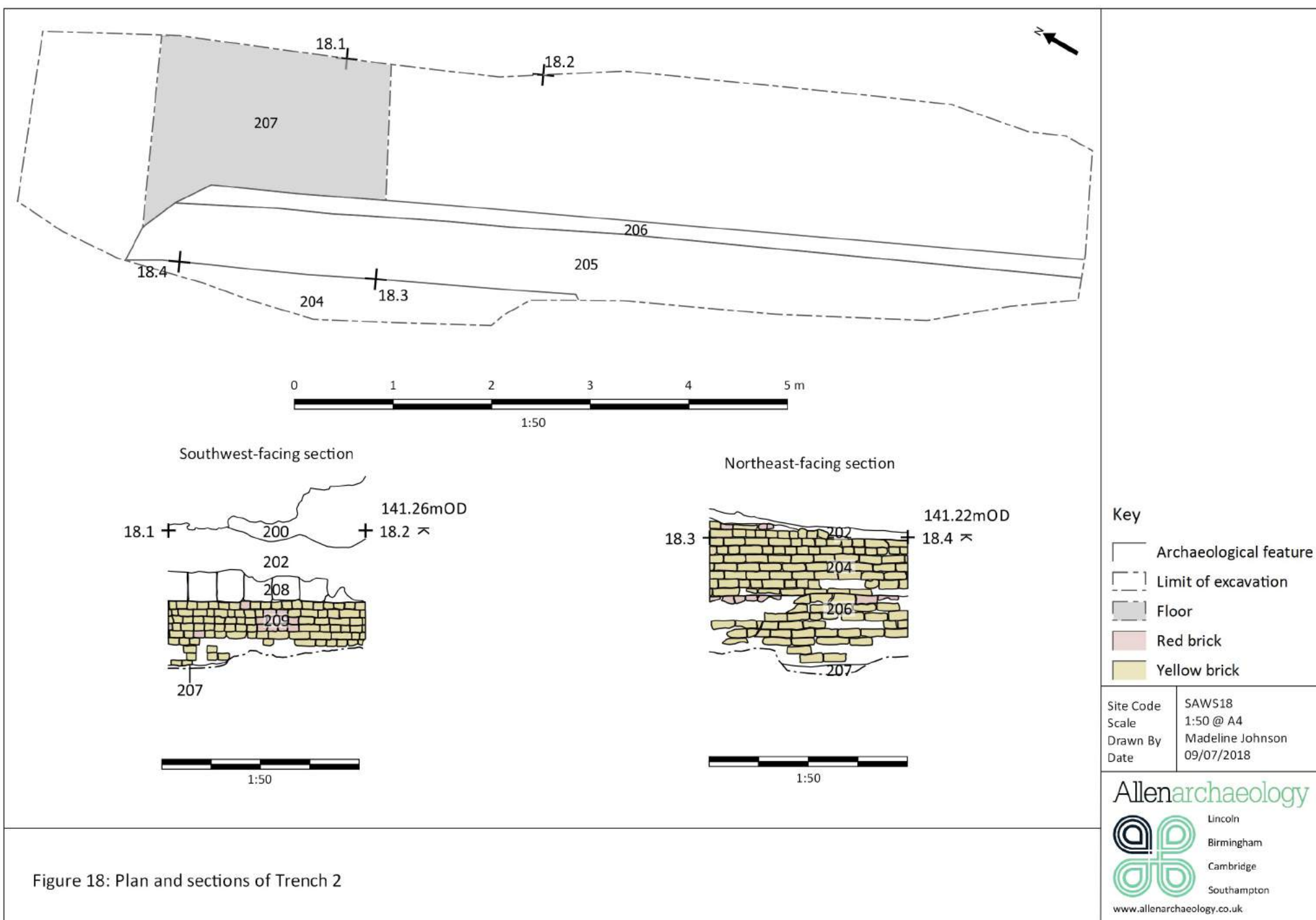


Figure 18: Plan and sections of Trench 2



Allen Archaeology Limited
Website: www.allenarchaeology.co.uk

Company Registered in England and Wales No: 6935529



Birmingham

+44 (0) 800 610 2545
birmingham@allenarchaeology.co.uk

Cambridge

+44 (0) 800 610 2550
cambridge@allenarchaeology.co.uk

Lincoln

+44 (0) 1522 685356
info@allenarchaeology.co.uk

Preston

+44 (0) 7710 099052
t.rayner@allenarchaeology.co.uk

Southampton

+44 (0) 800 610 2555
southampton@allenarchaeology.co.uk