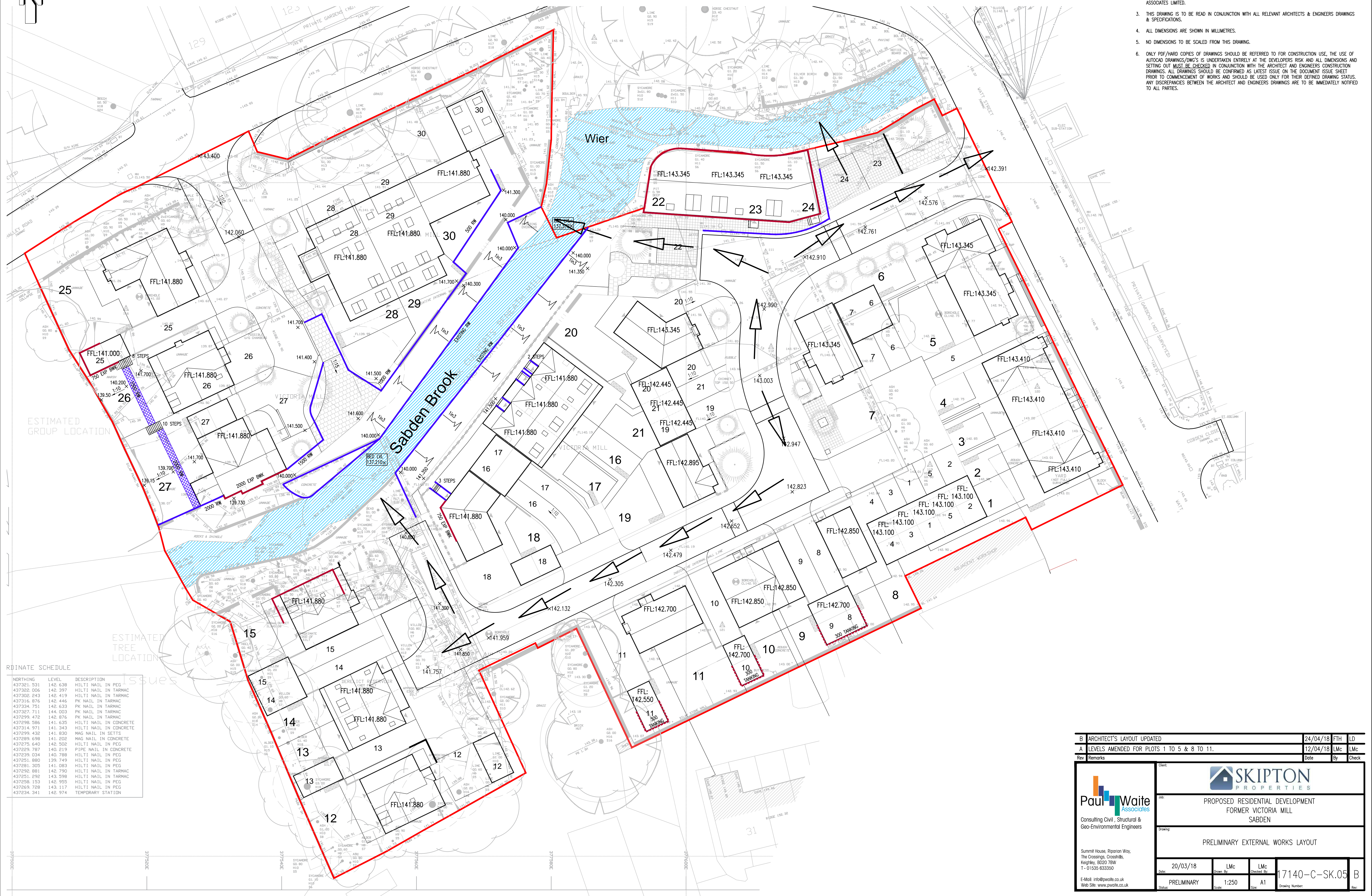






- NOTES:
1. COPYRIGHT IN THIS DOCUMENT BELONGS TO PAUL WAITE ASSOCIATES LIMITED & ALL RIGHTS IN IT ARE RESERVED BY THE OWNER.
 2. NO PART OF THIS DRAWING MAY BE COPIED, TRANSFERRED, OR MADE AVAILABLE TO USERS OTHER THAN THE ORIGINAL RECIPIENT, INCLUDING ELECTRONICALLY, WITHOUT PRIOR PERMISSION FROM PAUL WAITE ASSOCIATES LIMITED.
 3. THIS DRAWING IS TO BE READ IN CONJUNCTION WITH ALL RELEVANT ARCHITECTS & ENGINEERS DRAWINGS & SPECIFICATIONS.
 4. ALL DIMENSIONS ARE SHOWN IN MILLIMETRES.
 5. NO DIMENSIONS TO BE SCALED FROM THIS DRAWING.
 6. ONLY PDF/HARD COPIES OF DRAWINGS SHOULD BE REFERRED TO FOR CONSTRUCTION USE, THE USE OF AUTOCAD DRAWINGS/DWG'S IS UNDERTAKEN ENTIRELY AT THE DEVELOPERS RISK AND ALL DIMENSIONS AND SETTING OUT MUST BE CHECKED IN CONJUNCTION WITH THE ARCHITECT AND ENGINEERS CONSTRUCTION DRAWINGS. ALL DRAWINGS SHOULD BE CONFIRMED AS LATEST ISSUE ON THE DOCUMENT ISSUE SHEET PRIOR TO COMMENCEMENT OF WORKS AND SHOULD BE USED ONLY FOR THEIR DEFINED DRAWING STATUS. ANY DISCREPANCIES BETWEEN THE ARCHITECT AND ENGINEERS DRAWINGS ARE TO BE IMMEDIATELY NOTIFIED TO ALL PARTIES.



RDINATE SCHEDULE

NORTHING	LEVEL	DESCRIPTION
437321.531	142.638	HILTI NAIL IN PEG
437322.006	142.397	HILTI NAIL IN TARMAC
437302.243	142.419	HILTI NAIL IN TARMAC
437316.876	142.446	PK NAIL IN TARMAC
437334.751	142.633	PK NAIL IN TARMAC
437327.711	144.003	PK NAIL IN TARMAC
437299.472	142.976	PK NAIL IN TARMAC
437298.586	141.635	HILTI NAIL IN CONCRETE
437314.971	141.343	HILTI NAIL IN CONCRETE
437299.432	141.830	MAG NAIL IN SETTS
437299.698	141.202	MAG NAIL IN CONCRETE
437275.640	142.502	HILTI NAIL IN PEG
437229.787	140.219	PIPE NAIL IN CONCRETE
437299.034	140.788	HILTI NAIL IN PEG
437251.880	139.749	HILTI NAIL IN PEG
437281.305	141.083	HILTI NAIL IN PEG
437292.881	142.790	HILTI NAIL IN TARMAC
437551.292	143.598	HILTI NAIL IN TARMAC
437258.153	142.955	HILTI NAIL IN PEG
437269.728	143.117	HILTI NAIL IN PEG
437234.341	142.974	TEMPORARY STATION

B ARCHITECT'S LAYOUT UPDATED		24/04/18	FTH	LD
A LEVELS AMENDED FOR PLOTS 1 TO 5 & 8 TO 11.		12/04/18	LMc	LMc
Rev	Remarks	Date	By	Check
 Consulting Civil, Structural & Geo-Environmental Engineers		 PROPOSED RESIDENTIAL DEVELOPMENT FORMER VICTORIA MILL SABDEN		
Summit House, Riparian Way, The Crossings, Crosshills, Knaresborough, YO20 7BW T: 01535 633350 E-Mail: info@pwa.co.uk Web Site: www.pwa.co.uk		PRELIMINARY EXTERNAL WORKS LAYOUT		
20/03/18		LMc	LMc	17140-C-SK.05 B
PRELIMINARY		1:250	A1	
Status:		Scale:	Size:	Drawing Number: