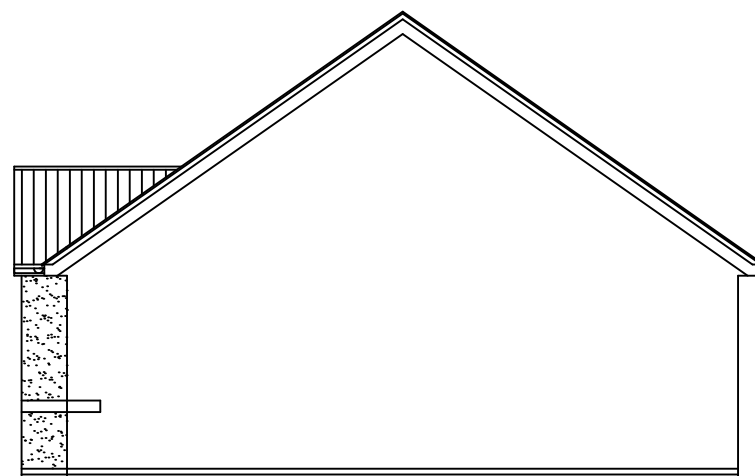
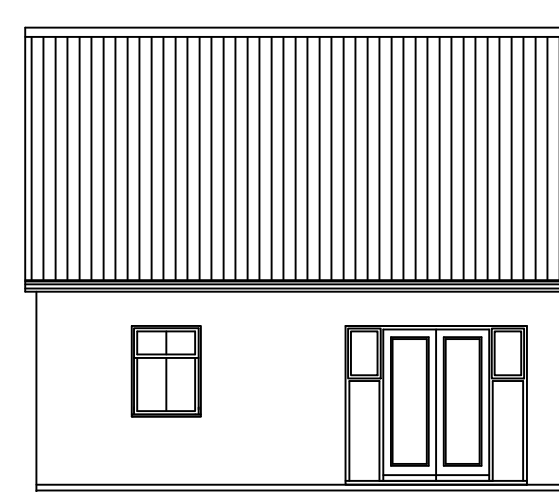




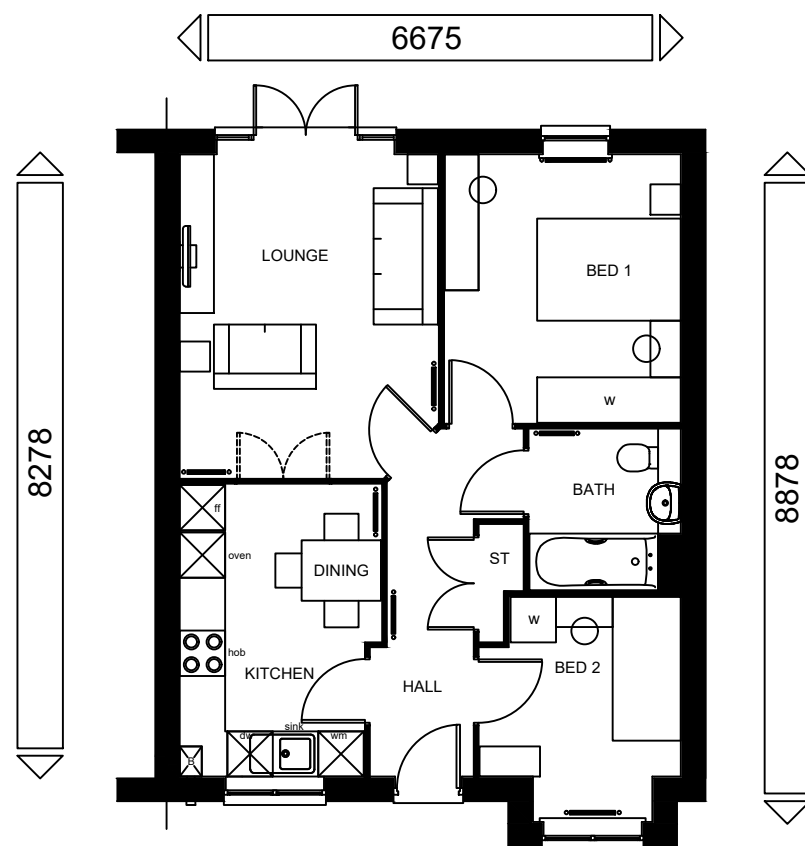
**FRONT ELEVATION**



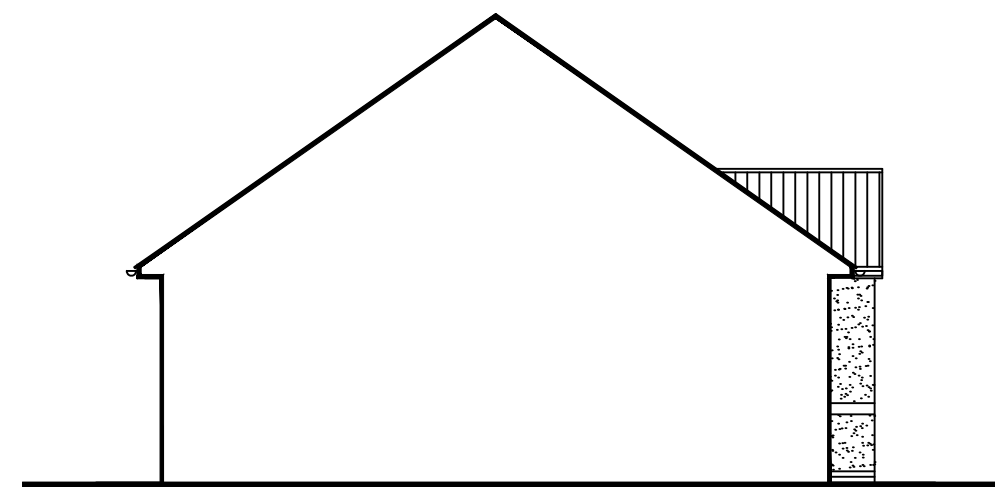
**SIDE ELEVATION**



**REAR ELEVATION**




**GROUND FLOOR PLAN**



**SECTION/SIDE ELEVATION**

**STATESMAN RANGE**  
**FLOOR AREA - 605sqft / 56.2m<sup>2</sup>**

  
**BARRATT**  
 MANCHESTER DIVISION

**Barratt Homes (Manchester Division)**  
 4 Brindley Road  
 City Park  
 Manchester  
 M16 9HQ

Tel: 0161 872 0161  
 Fax: 0161 855 2828

House Type Code

**BDVN 56CS**

**2010 Range - The Devon**

**WARNING TO HOUSE-PURCHASERS.**  
 Buyers are warned that this is a working drawing and the contents of this drawing may be subject to change during the progress of the build process. The layout, form, content and dimensions specified are included for general guidance only. The finishes or features shown may alter in respect of individual properties. Whilst we make every effort to ensure our drawings are up to date there may from time to time be an unavoidable delay in updating these due to changes in regulations and/or re-planning. Purchasers are advised to check with the Sales Adviser whether any alterations have been made to this drawing. The contents of this drawing do not constitute a contract, part of any contract or warranty unless specifically incorporated into the contract. They should not be relied upon for the purposes of entering into a contract to purchase any property.

PLANNING DRAWING - CLASSIC	
Date	October 2016
Drawn by	AU
Checked by	
Revision	
<b>2010/DEV/BR/01</b>	
<b>STATESMAN RANGE</b>	
Scale	1 : 100 @ A3