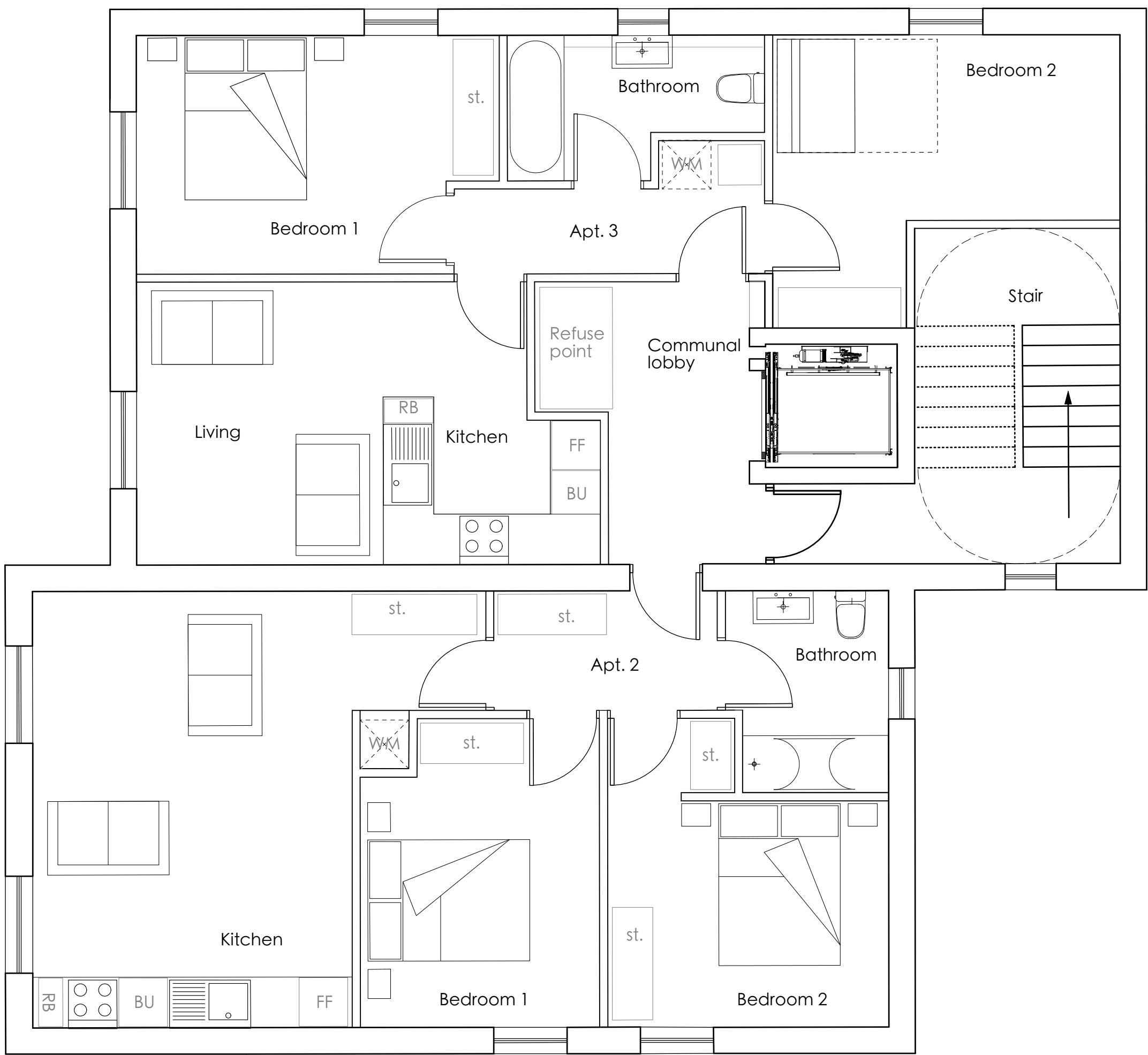


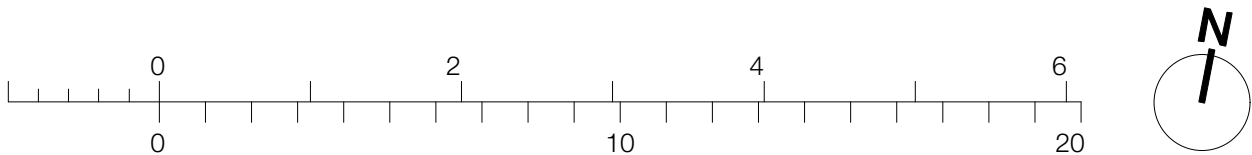
51.7 sqm. 1 Bedroom

Proposed Ground Floor Plan



Proposed First Floor Plan

For Discussion Only  
Not for Construction



Rev. C 20/11/17\_ Ground Floor flat amended.  
Rev. B 12/06/17\_ Elevator amended.  
Rev. A 15/12/16\_ Habitable room windows amended.

PROPOSED APARTMENTS PROPOSED FLOOR PLANS

East Lancashire Property UK Ltd  
Rockmount,  
Pimlico Road  
Clitheroe

14-051-04C