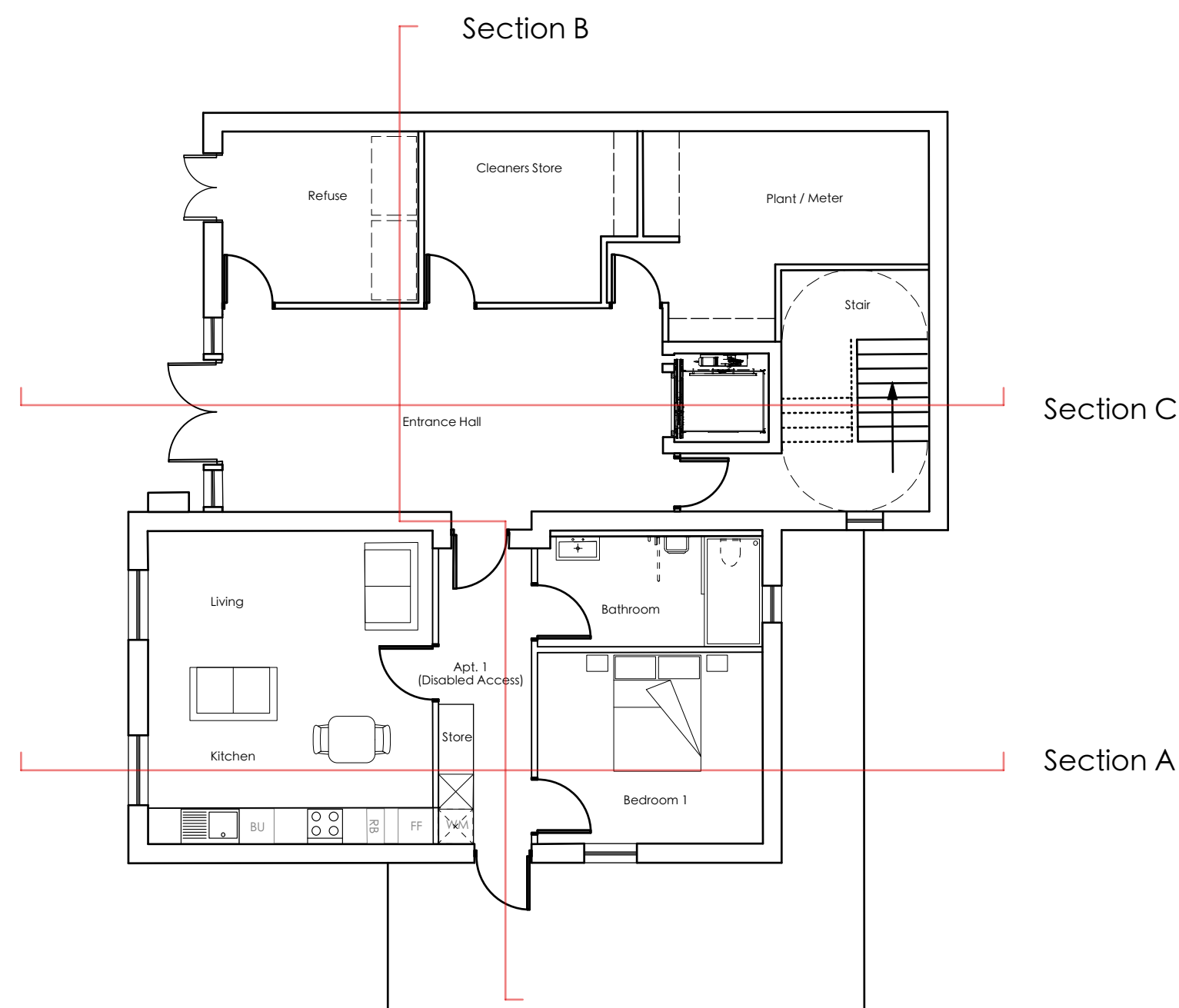




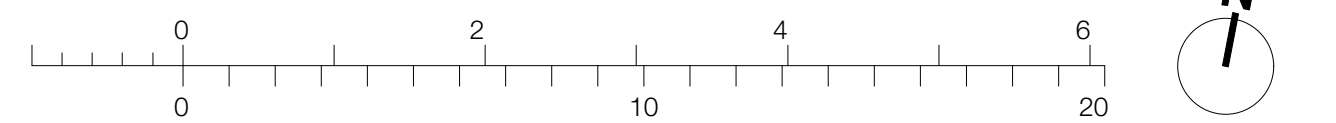
Proposed Section A



Proposed Section B



For Discussion Only
Not for Construction



Rev. D 20/12/17_ Sections updated.
Rev. C 20/11/17_ Sections amended.
Rev. B 12/06/17_ Habitable room windows, roof and Elevator amended.
Rev. A 15/12/16_ Habitable room windows and roof amended.

PROPOSED APARTMENTS PROPOSED SECTIONS
East Lancashire Property UK Ltd
Rockmount,
Pimlico Road
Clitheroe

14-051-06D